

Vanmate™



Instruction Manual
Vanmate Bolt - Van Deadlock

Table Of Contents

TABLE OF CONTENTS	2
GENERAL NOTES	3
BOX CONTENTS	3
PRODUCT DIAGRAM	3
INSTALLATION	4
OPERATING INSTRUCTIONS	8
SUPPORT	8

General Notes

Please read the full instructions before you start the installation to familiarise yourself with the full process.

IMPORTANT: There are two different versions of the Vanmate Bolt that are designed specifically for either the side sliding door or rear door (sold separately and/or as a set which includes one of each). Please ensure you only use the correct version for your installation. The installation instructions provided will be the same for each version.

We do recommend that the locks are fitted by a professional installer, however this lock can be fitted by any skilled and competent person.

Box Contents

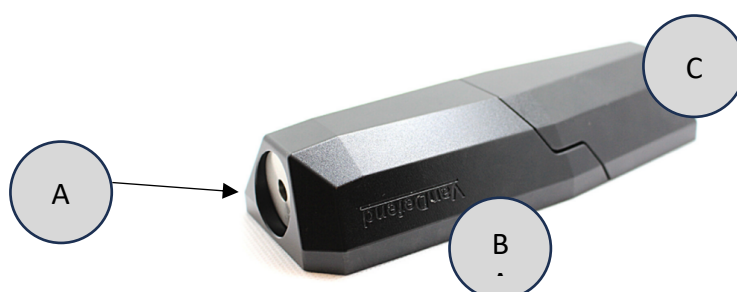
Vanmate Bolt Housing Unit
Vanmate Bolt Receiving Unit
3x Keys
Install Template (Sticker)
2x Rubber Receiver/Housing Gaskets
2x Plastic Receiver/Housing Shims (Mounting Risers)
Set of mounting screws and accessories
Rubber hole inserts
QR code (Instruction and support materials)

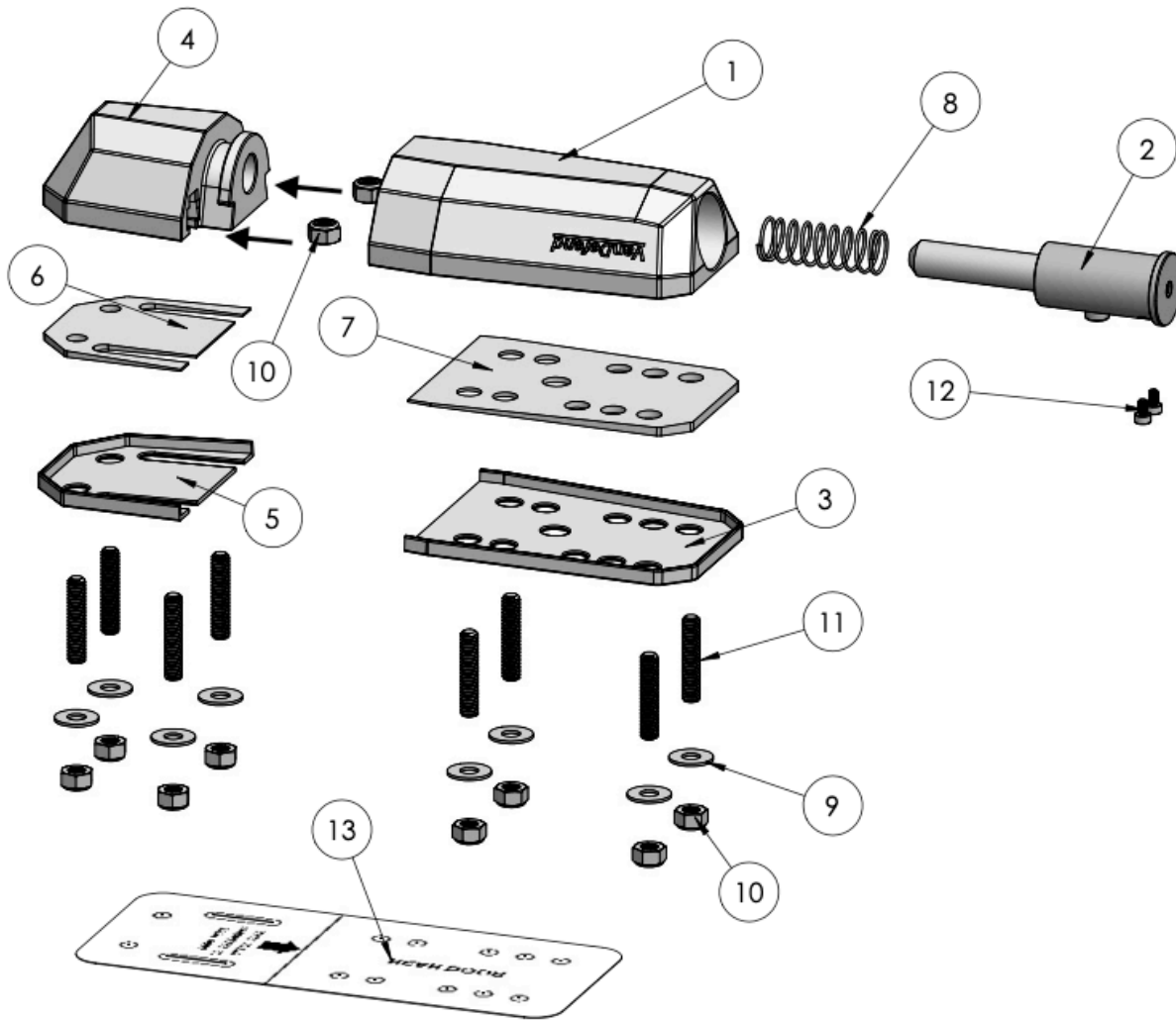
NB – More detailed illustration of bolt unit contents provided below

Product Diagram

Core Components

- A. Bullet Lock - 'Push' Button & Keyhole
- B. Housing Unit
- C. Receiving Unit





Exploded Components (Box contents may differ slightly depending on product version)

- 1 HOUSING UNIT
- 2 BULLET LOCK
- 3 HOUSING GASKET
- 4 RECEIVING UNIT
- 5 RECEIVER GASKET
- 6 RECEIVER SHIM
- 7 HOUSING SHIM
- 8 2.2" L x 0.59" OD x 0.51" ID COMPRESSION SPRING
- 9 M6 SS FLAT FENDER WASHER
- 10 M6x1 NYLON-INSERT LOCK NUT (May be supplied as bolts)
- 11 M6x1 FLAT TIP SET SCREW, 30MM L (May be supplied as bolts)
- 12 M3x0.5 x 5MM SHCS
- 13 INSTALL TEMPLATE

Installation

1. **PLANNING:** Carefully planning the position of the lock on the vehicle is the most important step. These locks can be fitted in multiple positions on most vehicles but check before fitment. Remove trim and blanking panels to ensure adequate room for operation. We recommend test fitting the lock with tape into position and double check before drilling holes.
2. **INSTALL TEMPLATE:**
 - a. Select the appropriate template sticker (i.e. rear vs side door) and find the most accessible spot on the doors to install the unit. Check the alignment of the edge of the doors matches the line on the template. For rear door installations, check the secondary door (the door that closes first) matches up with the line on the sticker. For side door installations, check the non-opening panel side matches up with the line on the sticker. Once you are comfortable you can peel off the sticker and apply it to the outside of the van, exposing all the drill hole option locations.
 - b. At this point, it may be wise to tape/hold the bolt unit on top of the template and ensure that the door opens and closes cleanly before drilling.



3. MARK HOLES:

- a. HOUSING UNIT: Review the hole slots and determine the best drill locations for the housing unit depending on the configuration of your door panels and reinforcing. It's best to use the outermost holes if possible. Mark the holes where you need to drill (4 in total).
- b. RECEIVING UNIT: Mark a drill point inside each of the 2 sliding slot locations depending on the configuration of your door panels and reinforcing. It's best to be near the centre of the sliding slot location if possible to allow for adjustment if needed.



4. DRILL HOLES:

- a. We recommend first drilling 2 x 1mm pilot holes on each side of the template to ensure selected position avoids interfering with vehicle structure or other vehicle components, to double check position.
- b. Once you are comfortable that there are no obstructions then you can drill the 6 x 6.5mm holes (4 in the housing unit and 2 in the receiving unit along the sliding slot location) to allow for the M6 bolts to be fitted.
- c. If the vehicle is double skinned in position of the lock catch, you may need to re-drill some of the 4 x 6.5mm to larger holes on the inside panel in order to fit mounting bolts (rubber plugs are provided to fill these later).
- d. Deburr all holes and file away sharp edges, touch up bare metal edges with protective paint.



5. FIT LOCK:

- a. Remove the template sticker
- b. Match up the Gaskets and Shims (ensuring that they align properly, and not to mix up the side and rear door versions) – See Appendix 1 & 2



- c. Fit the Gasket and then the shim onto the vehicle with the Housing/Receiver on top, then use the supplied bolts, nuts and washers to fasten the first 6 bolts in place. NB – the receiving unit fixture using the square nuts inserted in the sliding slot to allow the unit to move horizontally if needed.
- d. Test operation and adjust receiving unit position to ensure the doors open and close smoothly, the locks snap into position and the bolt lock closes/opens as designed.
- e. Once you have adjusted the positioning of the receiving unit and determined the final location, you can go back and mark/drill the holes (steps 3 and 4) for the final 2 fixings on the receiving unit side to secure the receiving unit in place.



6. **FIT RUBBER PLUGS (OPTIONAL):** Plug the internal expansion access holes if necessary.

Operating Instructions

To lock the unit – Push the locking mechanism in with your thumb or finger.

To unlock the unit – Insert the key into the keyhole and turn until the mechanism pops open.

UNLOCKED:



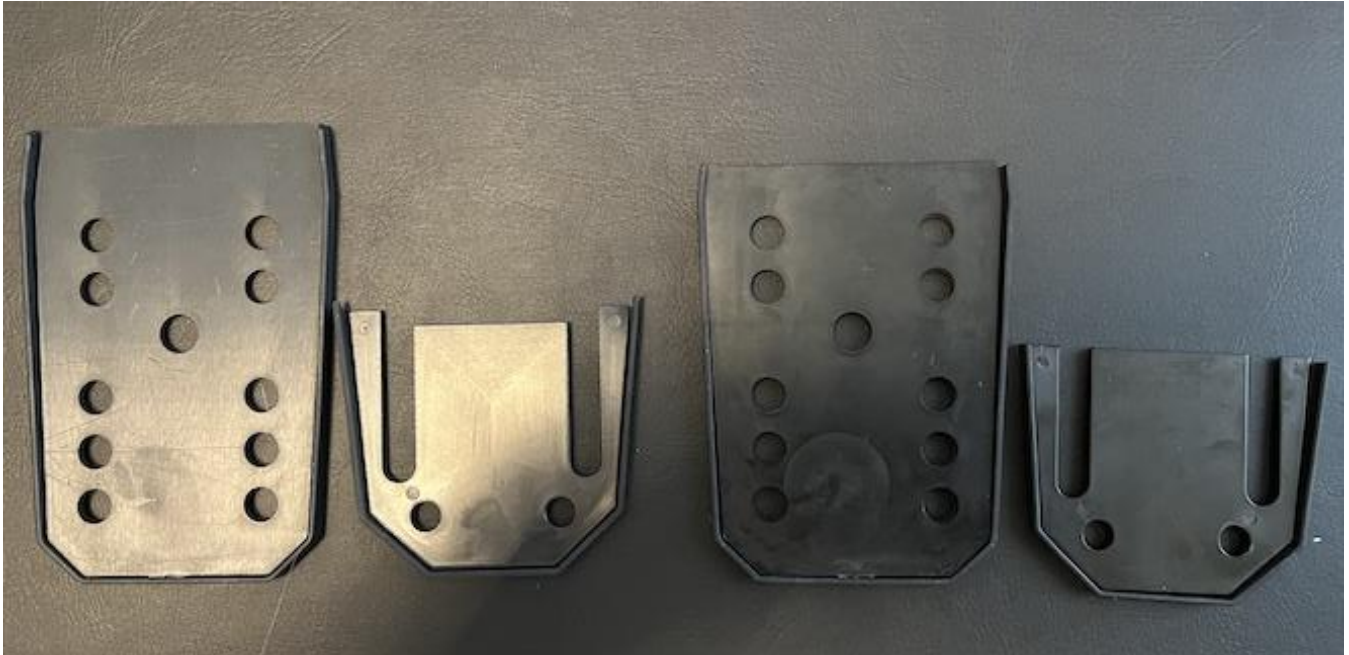
LOCKED:



Support

If you have any questions please visit buy.vanmate.co or email support@vanmate.co

APPENDIX 1 - Correct pairing of Gasket and Shims



APPENDIX 2 - Incorrect pairing of Gasket and Shims

