

# Gladiator A-Pillar Base with 1" or 20mm Ball Mount



# Installation Instructions

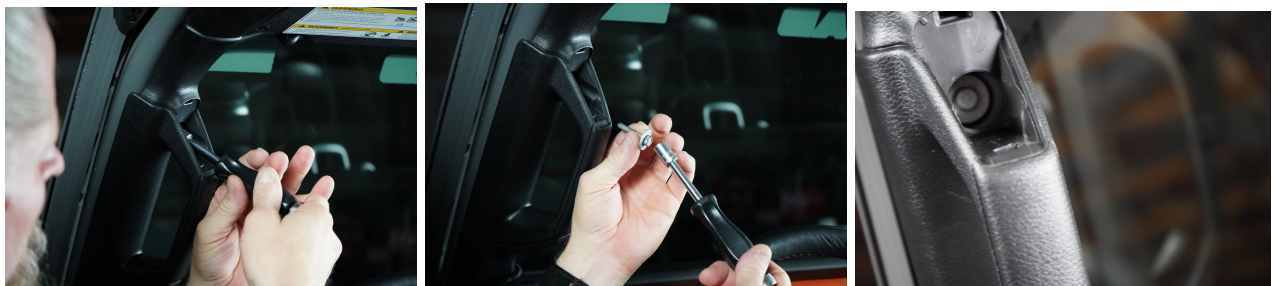
*Thank you for purchasing the CMM Offroad Gladiator A-Pillar Base*

You will need: 10mm socket and ratchet  
5mm and 8mm Allen Wrenches  
Flat Blade Screwdriver or Trim removal Tool

**Step 1** Start on the drivers side and remove the upper or lower cover plate from the A Pillar Handle with the flat Blade Screwdriver or Trim Removal Tool.



**Step 2** Use a 10mm Socket to remove the bolt inside the handle.



**Step 3** Install the Mount into the handle and tighten the provided bolt with a 5mm Allen.



**Step 4** Carefully re-install the 1" or 20mm Ball mount and tighten with an 8 mm allen wrench. Do not exceed 180 in/lbs.



**Step 5** Repeat this process on the passengers side.

If you have any technical questions, email [tech@cmmoffroad.com](mailto:tech@cmmoffroad.com) or call: (704) 213-4319