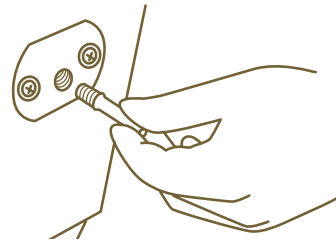
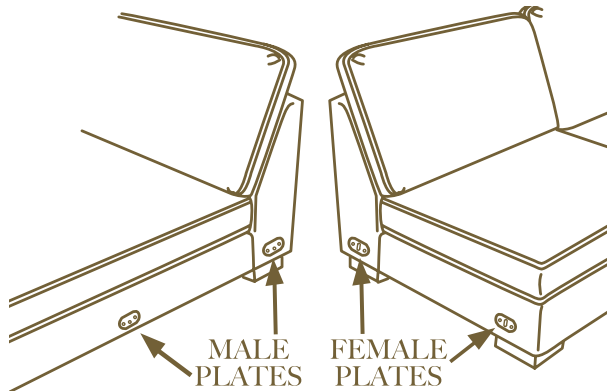


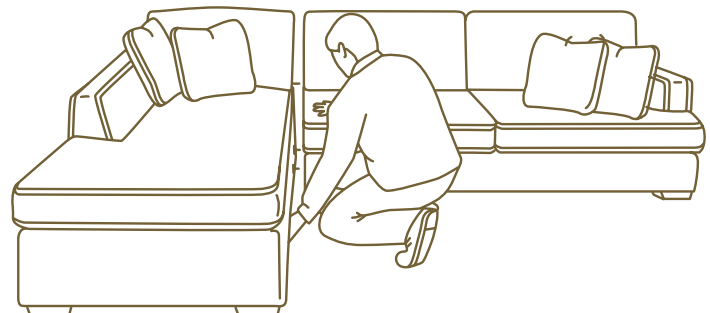
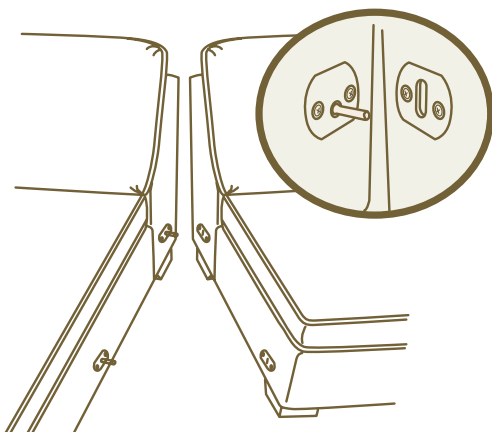


SECTIONAL ASSEMBLY INSTRUCTIONS



1. Arrange furniture pieces to their permanent position, on a level surface. Locate the pin connectors with these instructions. There are two types of plates. These will be referred to as "Male" (*above, left*) and "Female" (*above, right*).

2. The Male plate has a small round opening. Screw the threaded end of the connector pin into this opening. Pins are properly installed when they stop turning. Protruding pins on Male side will align with their opposing female side.



3. Beginning with the back connector, gently push the piece of furniture with the Male plate toward the corresponding Female plate on the other piece of furniture. Repeat steps with the front connectors.

4. To disconnect, begin with the front connector. Gently lift the furniture piece on the left and pull apart until pin comes free. Repeat with the back connector.

**SAVE THESE INSTRUCTIONS.
WHEN MOVING, UNSCREW CONNECTOR PINS AND STORE WITH INSTRUCTIONS.**