



L S T N S O U N D C O

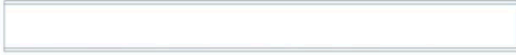
P A R A M O U N T

C O N T E N T S

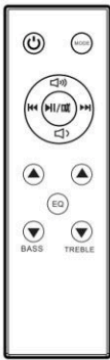
What's in the box	3
Getting Started	4
Remote Control Overview	5
Remote Control Operation	6
Using the Remote	7
Using the Onboard (Side or Soundbar) Controls	7
Rear Input Panel Overview	7
General Use	8
Connecting to Power	9
LED Indicators	10
Connection Modes	10, 11
Using ARC Input.....	12
Using the Optical Input.....	13
Using AUX In Audio Cables.....	14
Using MP3 Line In.....	15
Using Bluetooth Connection.....	16
Using USB Flash Drive Input.....	16
Using FM Radio.....	16
Troubleshooting	17
Wall Mounting	18
Specifications	24
Safety Information	25
FCC Statement	26

BOX CONTENTS

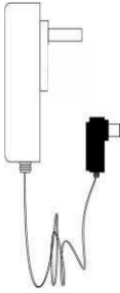
1. Paramount Soundbar
2. Remote Control
3. Power Adapter x1
4. AUX In Cable
5. Optical Cable
6. User Manual
7. 3.5mm to 3.5mm Line In Cable



1. Paramount Soundbar



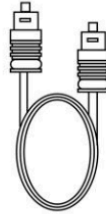
2. Remote Control



3. Power Adapter



4. AUX IN Cable



5. Optical Cable
Included inside
Master Shipping
Box



6. User Manual




7. 3.5mm
3.5mm

HDMI ARC CABLE
NOT INCLUDED

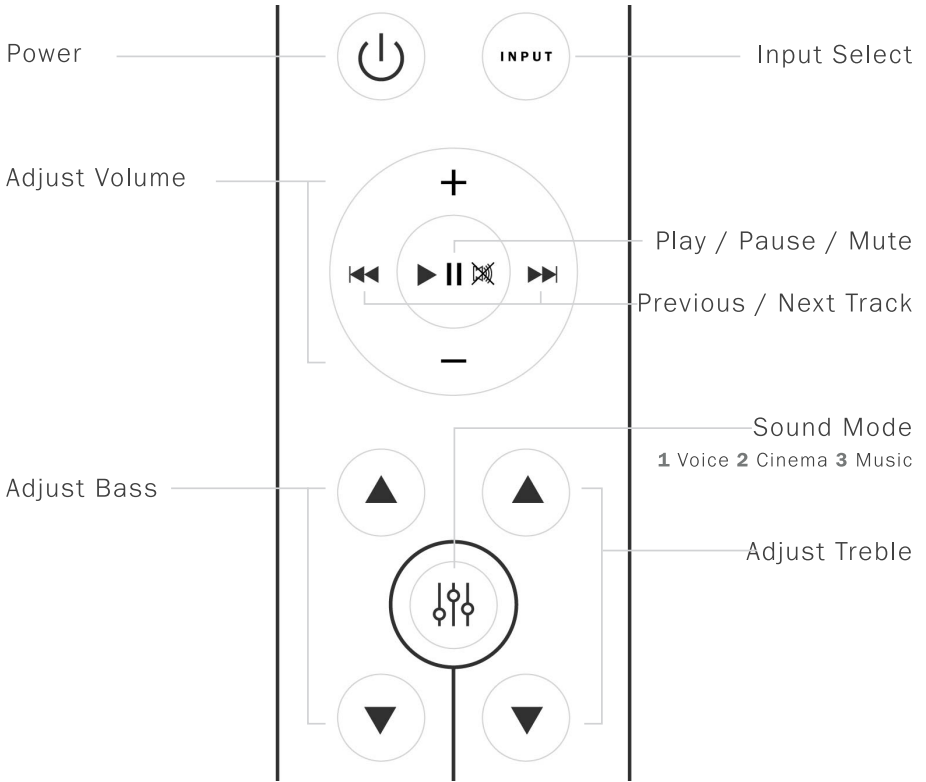
GETTING STARTED

Plug your Paramount in a standard wall outlet using the included 18V adaptor. Then, connect to your television using the method of your choice. If you hear interference or static, make sure your television, cable box, or streaming device is not set to 'Dolby Surround Sound' or a similar setting.

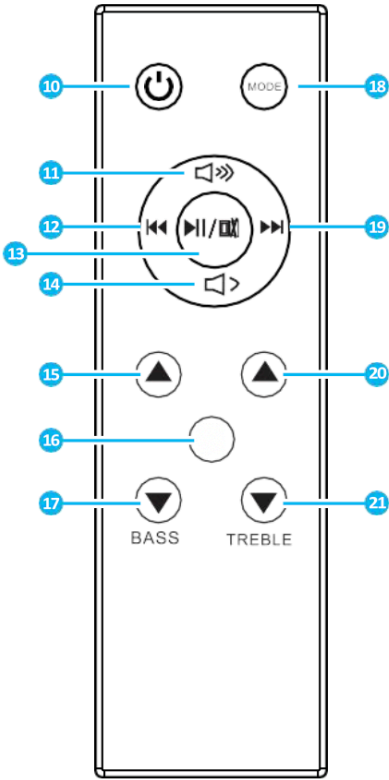
Experiment with the 3 audio enhancement presets found on the Paramount by pressing the  button. Each press will cycle through the three preset modes: voice, cinema and music enhancement. Fine-tune the bass and treble with the remote control. The Paramount will remember the last setting used when it is turned off, but treble and bass adjustments are not remembered.

The Paramount has the ability to link with select televisions using HDMI ARC. Using an HDMI cable on these televisions will sync your television's remote with the Paramount.

REMOTE



REMOTE CONTROL OPERATIONS



10. Power On/Off

Switch the Unit between on and stand-by more

11. Volume +

Press to increase the volume

12. Back Step

Use in AUX or Bluetooth mode to go back a track

13. Play/Pause

Press to play and pause

14. Volume

Press to decrease the volume

15. Bass Increase

Press to increase the bass

16. Sound Mode

Press the button to adjust the sound mode setting

17. Bass Decrease

Press to decrease the bass

18. MODE

Press the button repeatedly to switch between soundbar modes

19. Forward Step

Use in AUX or Bluetooth mode to go forward a track

20. Treble Increase

Press to increase the treble

21. Treble Decrease

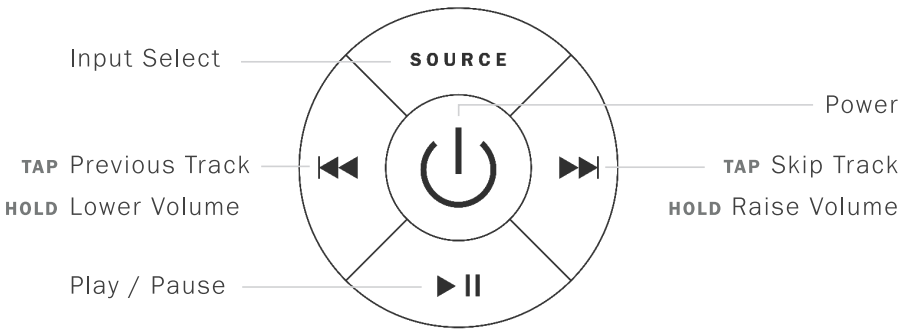
Press to decrease the treble

USING THE REMOTE CONTROL

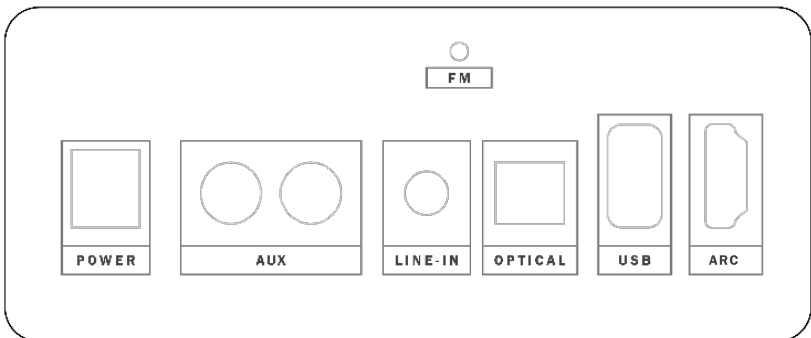
The remote control sensor at the front of the soundbar is sensitive to the remote control's commands up to a maximum of 8 metres away and within a maximum arc of 30 degrees.

Please note that the operating distance may vary depending on the brightness of the room.

ONBOARD CONTROLS



REAR PANEL



GENERAL USE

- ▶ Install the unit in a well-ventilated, cool, dry, clean place away from direct sunlight, heat, vibration, dust, moisture, or cold.
- ▶ Avoid installing the unit where external objects may fall into the unit, or where the unit may encounter liquid dripping or splashing.
- ▶ Use only the voltage specified by this unit. Using a voltage higher than the specified value on this unit is dangerous and may cause a fire, damage the unit, or cause personal injury.
- ▶ To prevent electric shock and other accidents, please do not open the cabinet at random. We do not authorize disassembly and re-assembly, and our warranty does not include maintenance.
- ▶ Unplug the Paramount during lightning storms or when unused for long periods.
- ▶ Before making a warranty claim, refer to the “Troubleshooting” section for details on common operating errors.

CONNECTING THE POWER

Ensure that the power supply voltage is in the voltage of 100V~240V.

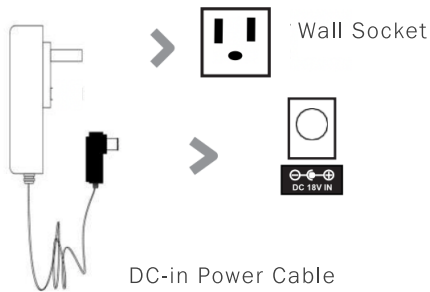
This unit is designed to use the included DC-18v Adapter. Connecting the unit to any other power source may cause damage to the unit.

Unwind the cord to its full length.

Connect the plug to a wall socket.

Make sure the mains plug is fully inserted into the mains socket.

Connect the adapter to the unit via the DC input socket. (DC-18V-IN)



Ensure all audio connections of the unit are connected before connecting to the main power supply wall socket

LED INDICATORS

BLUE / RED	HDMI (ARC)
RED	OPTICAL
BLUE	BLUETOOTH
GREEN	AUX
BLUE / GREEN	USB
YELLOW	LINE-IN
WHITE	FM RADIO

CONNECTION MODES

► HDMI (ARC)

Connect your HDMI-capable device to the Paramount using an HDMI cable (not included). Press the input button on the remote or the source button on the Paramount until the LED is blue and red. HDMI is the optimum connection for the Paramount, automatically syncing with your television's remote once connected.

► Optical

Connect your device to the optical port on the Paramount using a digital optical cable (not included). Press the input button on the remote or the source button on the Paramount until the LED is red.

► Bluetooth

Press the input button on the remote or the source button on the Paramount until the LED is blue. Then, enter your

device's Bluetooth settings and select 'LSTN Paramount' from the list of available devices. If prompted for a passcode, enter 0000.

► **Aux**

Use the provided aux cables to directly connect your device to the Paramount. Press the input button on the remote or the source button on the Paramount until the LED is green.

► **USB**

Connect a USB flash drive to the Paramount. Press the input button on the remote or the source button on the Paramount until the LED is blue and green.

► **Line-in**

Use the provided 1/8" (3.5Mm) audio cables to directly connect your device to the Paramount. Press the input button on the remote or the source button on the Paramount until the LED is yellow.

► **FM Radio**

The Paramount also has a built-in fm radio antenna. Press the input button on the remote or the source button on the Paramount until the LED is white. Hold the play / pause button to scan available radio stations, and use the ◀◀ / ▶▶ buttons to select specific preset stations.

U S I N G T H E A R C I N P U T

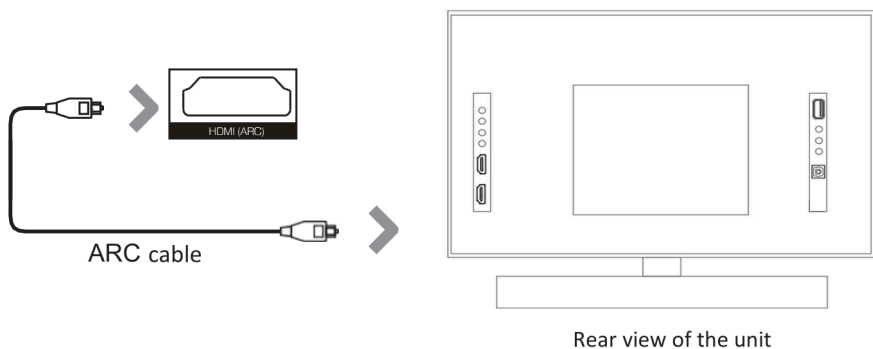
You will need: An audio source with an ARC Audio Output and a ARC Audio cable (not included).

Connect the ARC Audio cable to the ARC output on the audio source and to the ARC Input on the soundbar.

Press the POWER button on the soundbar or POWER button directly on the remote control (**Rem.10**) to switch on the unit.

Press the MODE button on the remote control (**Rem.18**) to switch to ARC mode or select the Mode button on main unit repeatedly to select the ARC (Pink) mode.

Using the native controls on your connected device, make sure the audio settings are set to ARC or HDMI Audio and are turned on. Audio from the connected audio source will now be played through the speakers.



USING THE OPTICAL INPUT

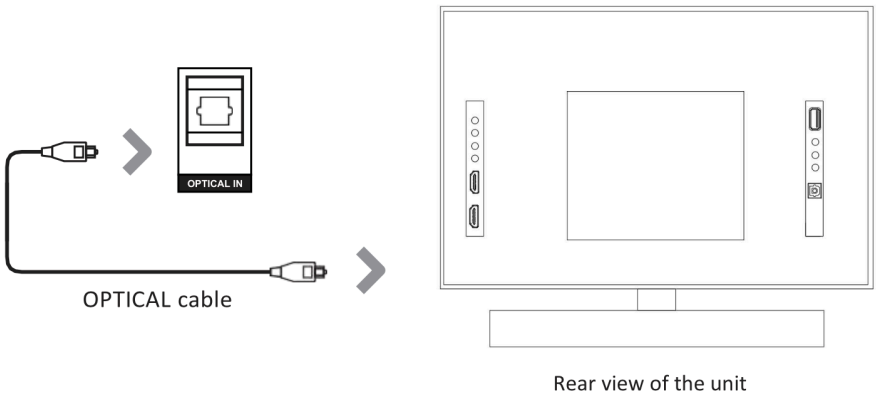
You will need: An audio source with an Optical Audio Output and a Digital Optical Audio cable (included inside master shipping box).

Connect the Digital Optical Audio cable to the optical output on the audio source and to the optical Input on the soundbar.

Press the POWER button on the soundbar or POWER button directly on the remote control (**Ref.10**) to switch on the unit.

Press the MODE button on the remote control (**Rem.18**) to switch to Optical mode or select the Mode button on main unit repeatedly to select the Optical (Red) mode.

Using the TV controls on your connected TV make sure the audio settings are set PCM or Optical Audio and are turned On. Audio from the connected audio source will now be played through the speakers.



U S I N G T H E A U X I N C A B L E

Use the AUX Stereo Audio Cable (included) to connect the TV's stereo AUX (L/R) audio output socket.

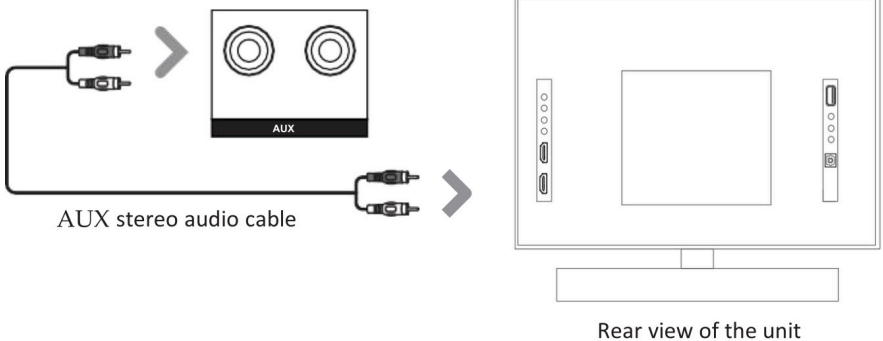
Connect the audio output cable of the soundbar via the 'AUX' input sockets of the unit.

Then press MODE on the remote control (**Rem.18**) or press the Mode button on the unit to scroll to the AUX IN (Green) function.

Turn on your television.

Troubleshooting: If you are not receiving a picture or encountering interference, please ensure that the AUX cable is being connected to 'output' AUX port on your TV set. This will ensure that the sound is being exported correctly.

If your TV does not have 'output' AUX port, please use an alternative connection method.



U S I N G T H E L I N E I N C O N N E C T I O N

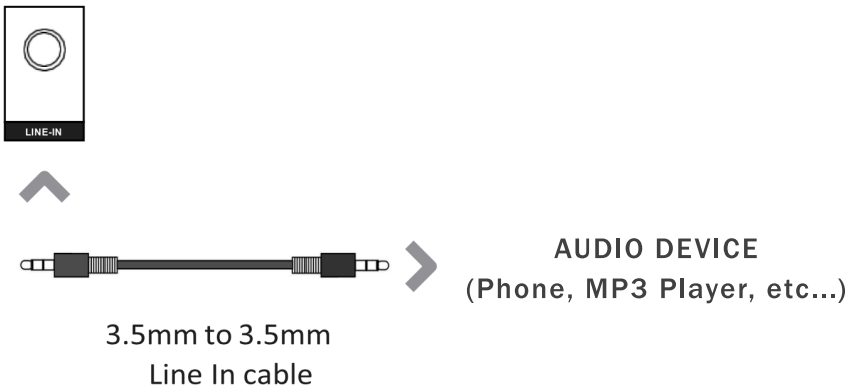
Plug one end of a 3.5mm to 3.5mm Line In cable (included) into the Line In port on the unit. Before use, disconnect any cables connected to the Stereo RCA Inputs.

Plug the other end of the cable into the audio output/headphone output on an MP3 player or other audio source.

Press the Power button on the soundbar or POWER button directly on the remote control (**Rem.10**) to switch on the unit.

Press the Mode button repeatedly on the soundbar or press the MODE button on remote control (**Rem.18**) repeatedly to enter LINE in (Orange) mode.

Audio played through the connected device will now be heard through the speakers.



U S I N G T H E B L U E T O O T H O P E R A T I O N

Pairing a Bluetooth Device for the First Time.

Press the POWER button on the unit or the POWER button on the remote control (**Rem.10**) to switch on the unit.

Select and press the MODE button repeatedly on the remote control until in Bluetooth mode (**Rem.18**) or press the Mode button repeatedly on the soundbar to enter Bluetooth (Blue) mode.

Using the native controls on your Bluetooth device, select LSTN Paramount in your Bluetooth settings to pair.

Refer to the user manual for your specific device for instructions on pairing and connecting Bluetooth devices.

When successfully paired and connected, a beep will issue from the unit. After the initial pairing, the unit will stay paired unless unpaired manually by the user.

If your device should become unpaired or you find it is unable to connect, repeat the above steps.

Using USB flash drive Connection

Connect a USB flash drive to the Paramount. Press the input button on the remote or the source button on the onboard controls until the LED is blue and green.

Using the FM Radio

Press the input button on the remote or the source button on the paramount until the LED is white. Hold the play/pause button to scan available radio stations and use the ◀▶ buttons to select preset stations.

T R O U B L E S H O O T I N G

Power: Check if the power adaptor is properly connected to the outlet and the Paramount. Confirm there is power running through the outlet.

No audio: Check that the cables used are properly connected. If the problem persists, try a different set of cables. Confirm the Paramount is not muted or in standby mode.

Bluetooth connection: If you have previously connected the Paramount to your device, forget it from your Bluetooth settings. Then turn your device's Bluetooth setting off, and then turn off the Paramount. Wait 10 seconds then turn your device's Bluetooth setting back on. Turn on the Paramount, and it will begin pairing as usual. If your device requires a passcode, use **0000**.

Interference / Distortion: Turn off the Paramount and disconnect it from the power source. Let it stand for at least 2 minutes, then resume use. If one particular mode seems to be problematic, try using an alternative input source.

Remote: Check for obstacles blocking the remote's IR signal. Try new batteries, and replace if necessary. Turn the unit off, disconnect it from the power source and let stand momentarily.

Need more help? Visit - <https://LSTNsound.com/products/paramount-soundbar> or just go to LSTNsound.com and search "Paramount". You'll find even more detailed installation instructions and some trouble shooting videos to help get you set up and enjoying your new LSTN Paramount Soundbar!

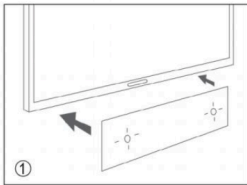
Still stumped? Contact team LSTN at hello@lstnsound.co and we'll help you out.

WALL MOUNTING

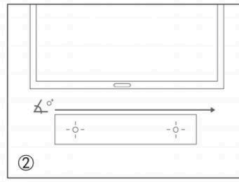
Mark the wall for the two screw holes needed at 26 1/4 inch (68cm). The holes should be centered on the wall below the television.

Insert two screws to a height of 5mm to allow for the soundbar to sit evenly on the wall.

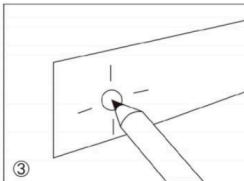
Note - If you do not have a measuring tape, you can use the long white cardboard protective insert that comes on top of the soundbar as a wall guide by marking the cardboard where the rear wallmount brackets are on the back of the soundbar and placing on the wall to mark where to place the screws as shown below.



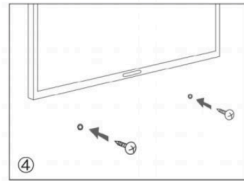
① Place the paper guide on the wall or measure where you want to hang the soundbar.



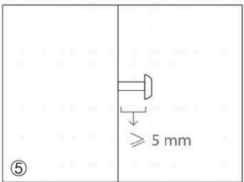
② Verify with a level gauge that the inclination angle of the soundbar is zero degrees.



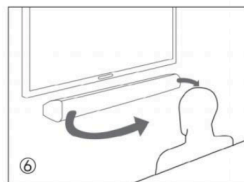
③ Locate the screw holes on the paper guide and mark a point with a pencil.



④ Mark the holes with the corresponding drill bit according to the type of wall.



⑤ It is advisable to leave no more than 5mm between the head of the screw and the wall to minimize the inclination angle of the soundbar.



⑥ For a better sound experience, it is advisable to place the soundbar at head level.



LSTN co-founders Bridget & Joe with a patient in Eldoret, Kenya 2018

Sound & purpose: it's what we're all about at LSTN. That's why proceeds from every LSTN sale help us give hearing aids to those in need worldwide. So far we've helped more than 30,000 people alongside Starkey Hearing Foundation, and we're just getting started. See where we're heading next at lstnsound.com





THE LINEUP

Need amazing sound? Look no further. The LSTN lineup is sure to cover all your needs. Each product is fully electro-acoustically tested to ensure optimum sound quality, and all our products come with a one-year warranty. Whether you need in-ear headphones for working out or speakers to power your parties, we have you covered.

WWW.LSTNSOUND.COM





S P E C I F I C A T I O N S

- ▶ 2 channel sound bar
- ▶ Bluetooth / Optical / FM / HDMI (ARC) / USB / Aux / Line-in
- ▶ Remote Control

- ▶ DC 18V / 2A power supply
- ▶ 30W power output
- ▶ Six 50mm (2") speakers

- ▶ Bluetooth 5.0
- ▶ Range: 10m (30')
- ▶ ABS crack-resistant plastic case

- ▶ 39" x 2.5" x 2.5"
- ▶ Automatic power off function
- ▶ Remote control

1. Read this user manual.
2. Keep this user manual.
3. Heed all Warnings.
4. Follow all instructions.
5. Do not clean the apparatus near or with water.
6. Do not block any ventilation openings. Install in accordance with the manufacturer's instructions.
7. Do not install near any heat sources such as radiators, heat registers, stoves or other apparatus (including amplifiers) that produce heat.
8. Protect the power from being walked on or pinched particularly at plugs and the point where they exit from the apparatus.
9. Only use attachments/accessories specified by the manufacturer.
10. Unplug this apparatus during light storms or when unused for long period of time.
11. Refer all servicing to qualified service personnel. Servicing is required when the apparatus has been damaged in a way, such as power-supply cord or plug is damage, liquid has been spilled or objects have fallen into the apparatus, the apparatus has been exposed to the rain or moisture, does not operate normally or has been dropped.
12. No naked flame sources, such as lit candles, should be placed on the apparatus.
13. Dispose of used electrical products and batteries safely according to your local

authority and regulations.

ADDITIONAL WARNINGS

The apparatus shall not be exposed to dripping or splashing and no objects filled with liquid, such as vases, shall be placed on the apparatus.

Main plug is used to disconnect device and it should remain readily operable during intended use. In order to disconnect the apparatus from the main mains completely, the main plug should be disconnected from the main socket outlet completely.

Battery shall not be exposed to excessive heat such as sunshine, fire or the like.

RECYCLING ELECTRICAL PRODUCTS

You should now recycle your waste electrical goods and in doing so help the environment.



This symbol means an electrical product should not be disposed of with normal household waste. Please ensure it is taken to a suitable facility or disposal when finished with,

IMPORTANT: Please read all instructions carefully before use and keep for future reference.



Risk of electric shock. Do not open



Read all instructions carefully before use and keep for future reference



When servicing, use only identical replacement parts



F C C S T A T E M E N T

This equipment has been tested and found to comply with the limits for a Class B digital device, pursuant to part 15 of the FCC Rules. These limits are designed to provide reasonable protection against harmful interference in a residential installation. This equipment generates, uses and can radiate radio frequency energy and, if not installed and used in accordance with the instructions, may cause harmful interference to radio communications. However, there is no guarantee that interference will not occur in a particular installation. If this equipment does cause harmful interference to radio or television reception, which can be determined by turning the equipment off and on, the user is encouraged to try to correct the interference by one or more of the following measures:

- ▶ Reorient or relocate the receiving antenna.
- ▶ Increase the separation between the equipment and receiver.
- ▶ Connect the equipment into an outlet on a circuit different from that to which the receiver is connected
- ▶ Consult the dealer or an experienced technician for help.

Show us your space and your sound bar! Post a photo and tag **#LSTN** for a chance to be featured on our official account. Our followers are also the first to know about special offers and promotions.



@LSTNsound



/LSTNheadphones



@LSTN



WWW.LSTNSOUND.COM

©2020 LSTN, Inc.