

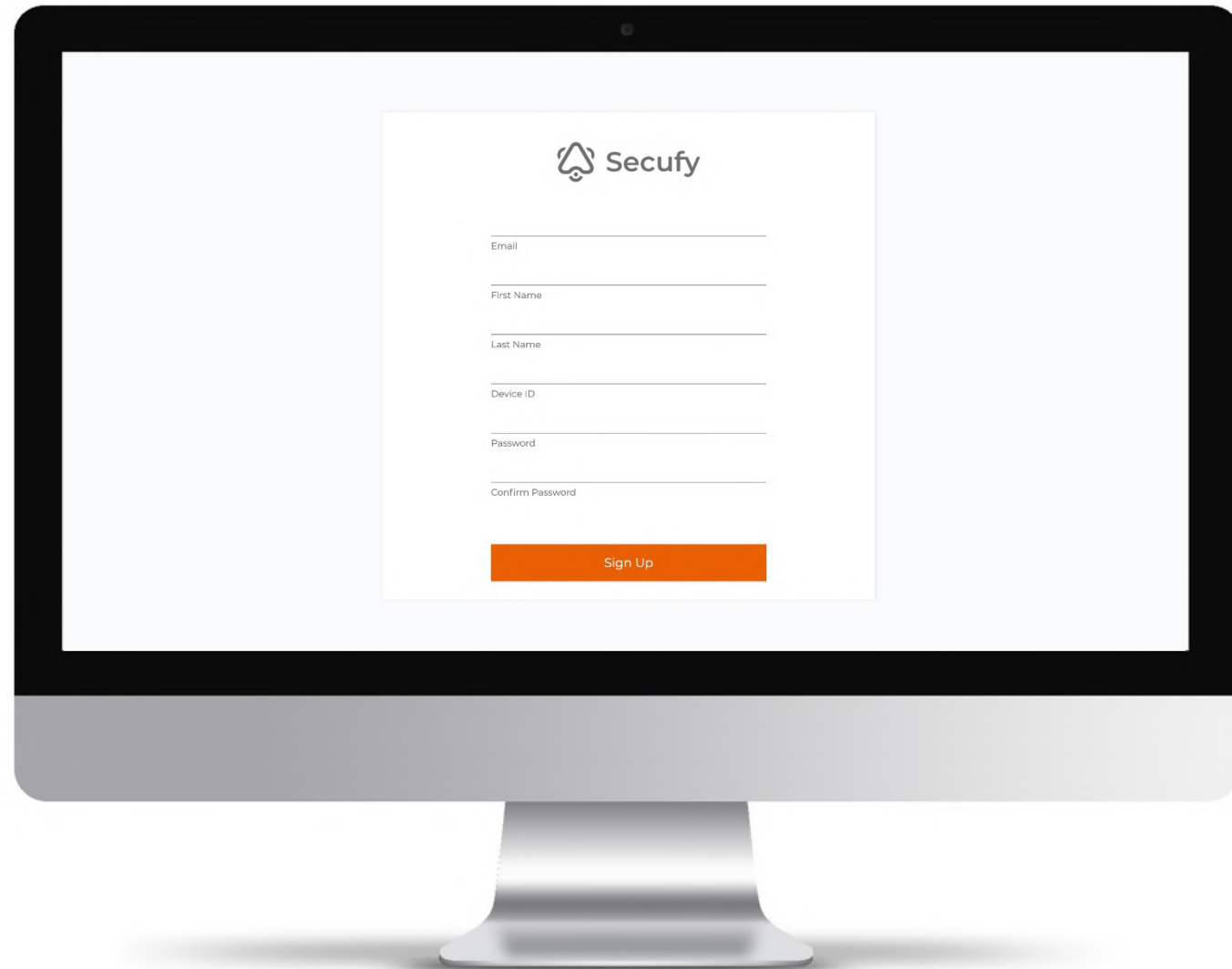
## How to initialize your Secufy Button

# Sign Up or Login

You can sign up / register with your button ID here:

<https://secufy-sos.cumulocity.com/apps/secufy/index.html#/register>

When you sign up the first time, please completely fill out the form. Your unique Device ID is printed at the back of your button(s).



# Sign Up or Login

If you've signed up already, you can login or add another Button to your account here:

<https://secufy-sos.cumulocity.com/apps/secufy/index.html#/login>



# Overview

The main page of the Secufy Dashboard shows an overview of all your Buttons and their status.

**1.** You can sort the overview by **STATUS, DEVICE ID, NAME, MODE, POSITIONING, BATTERY** and **LAST SEEN**.

## 2. STATUS

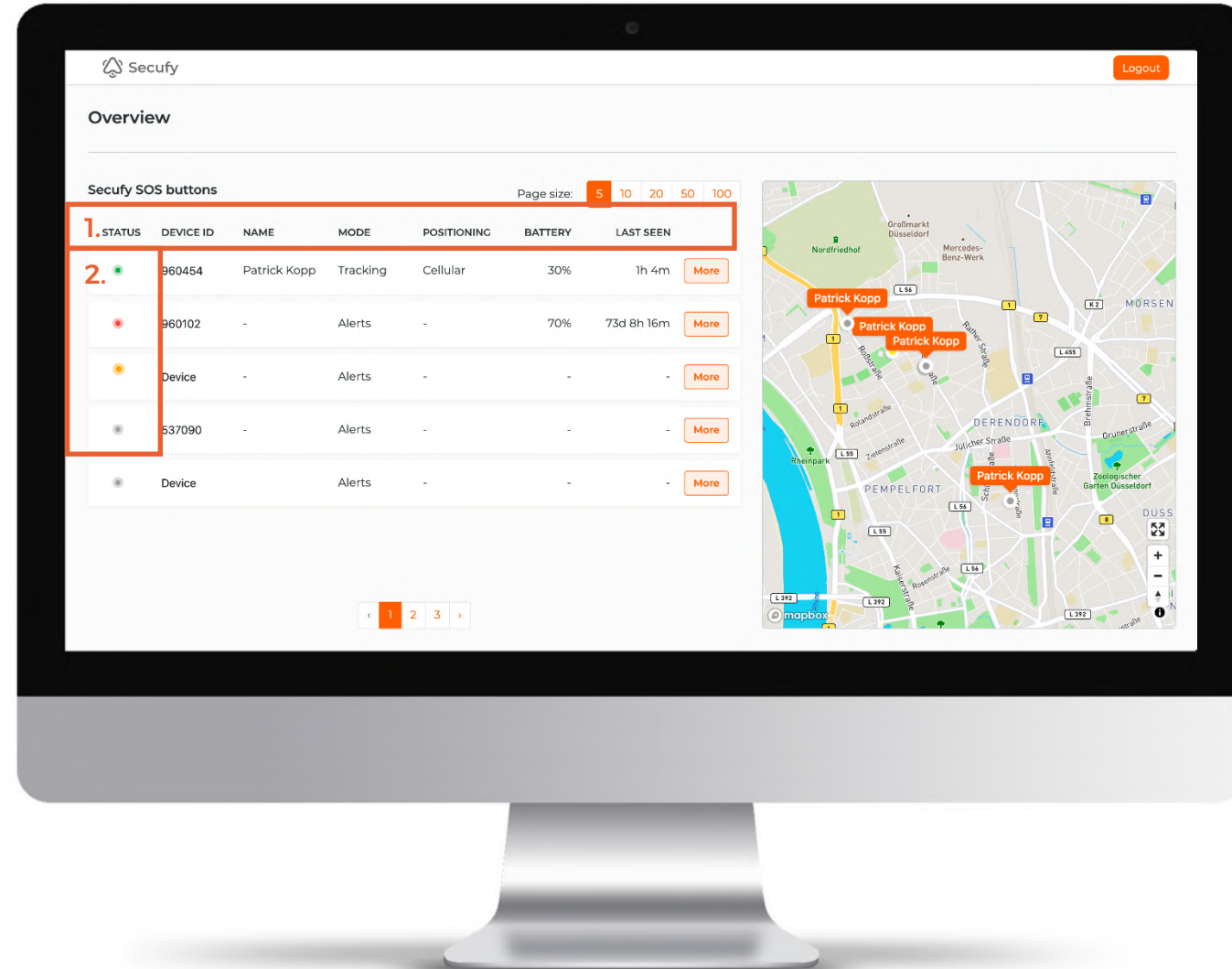
Green: your Button and device ID is good

Yellow: either the battery is **low** or the last information is more than 25 hours ago\*

Red: either the battery is **very low** or the last information is more than 50h ago\*

Grey: your device is registered but has never sent any data yet\*

\* Please note that your button is sending (as long as it has connectivity and some battery) a „heartbeat“ to our cloud backend once every 24 hours to transmit battery status and confirm it's functioning properly.



# Overview

## 3. DEVICE ID

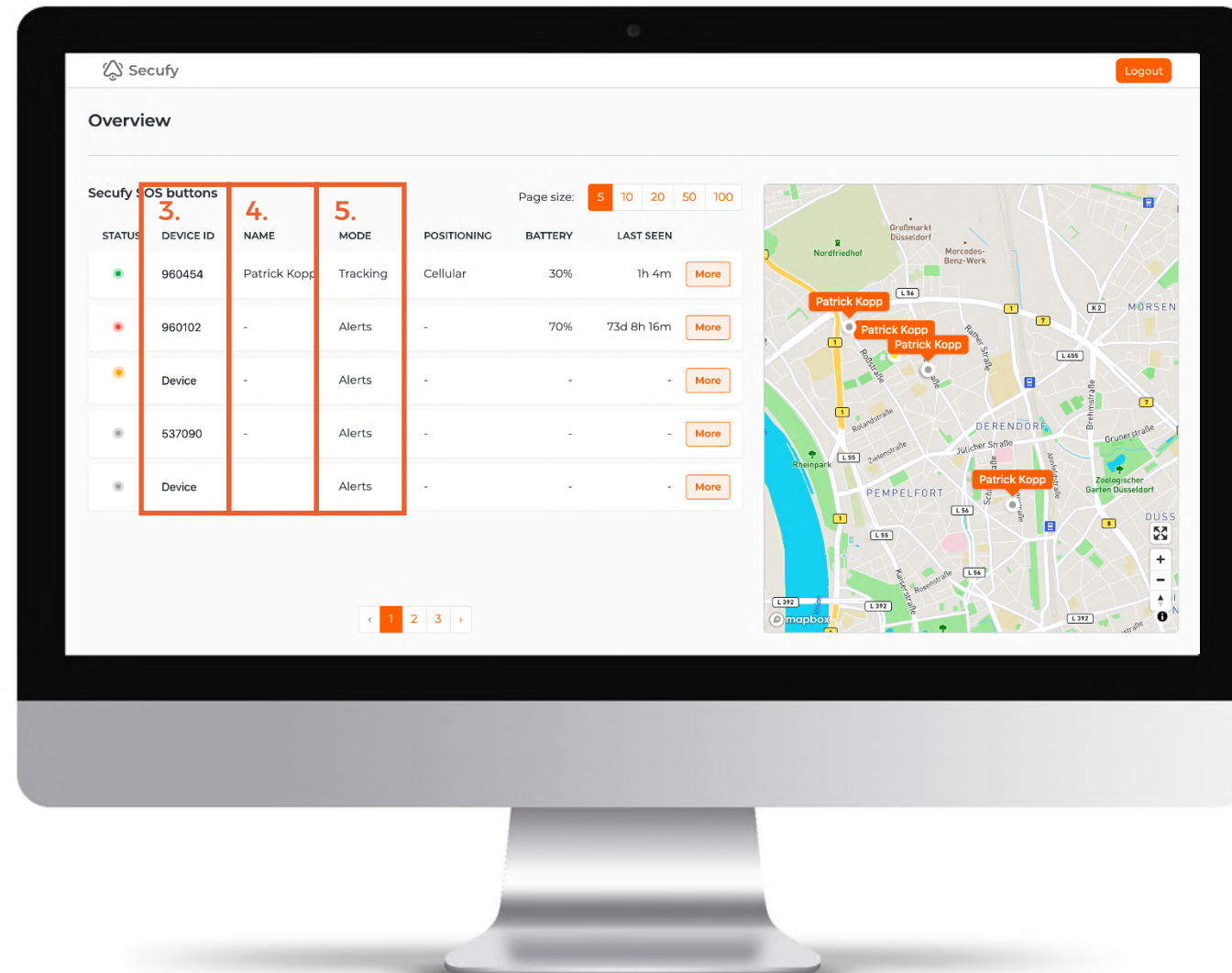
Last 6 characters of hardware number, fixed

## 4. NAME

This is the name you give, typically the name of the wearer, see 'More'

## 5. MODE

Mode shows whether the Button is in alert mode (= sending a localized SOS message to your individual recipients (see 'More') upon being pressed 3 times) or in tracking mode (= sending location information to the backend every 15 minutes). Entering and exiting tracking mode is both performed by a long press (> 5 sec.) of the button. If the button is operated in tracking mode it still processes SOS triggers when pressed 3 times. When the SOS message is triggered (= button pressed 3 times), the button wakes up and starts blinking blue til the location is determined and the message is being sent (more on page 12). This may take a few minutes.



# Overview

## 6. POSITIONING

Positioning shows by which method the last position received was derived:

Cellular (via GSM cells, accuracy low, used when no GPS signal is available, e.g, indoors),

GNSS (= via GPS or similar satellite systems when outdoor, accuracy high)

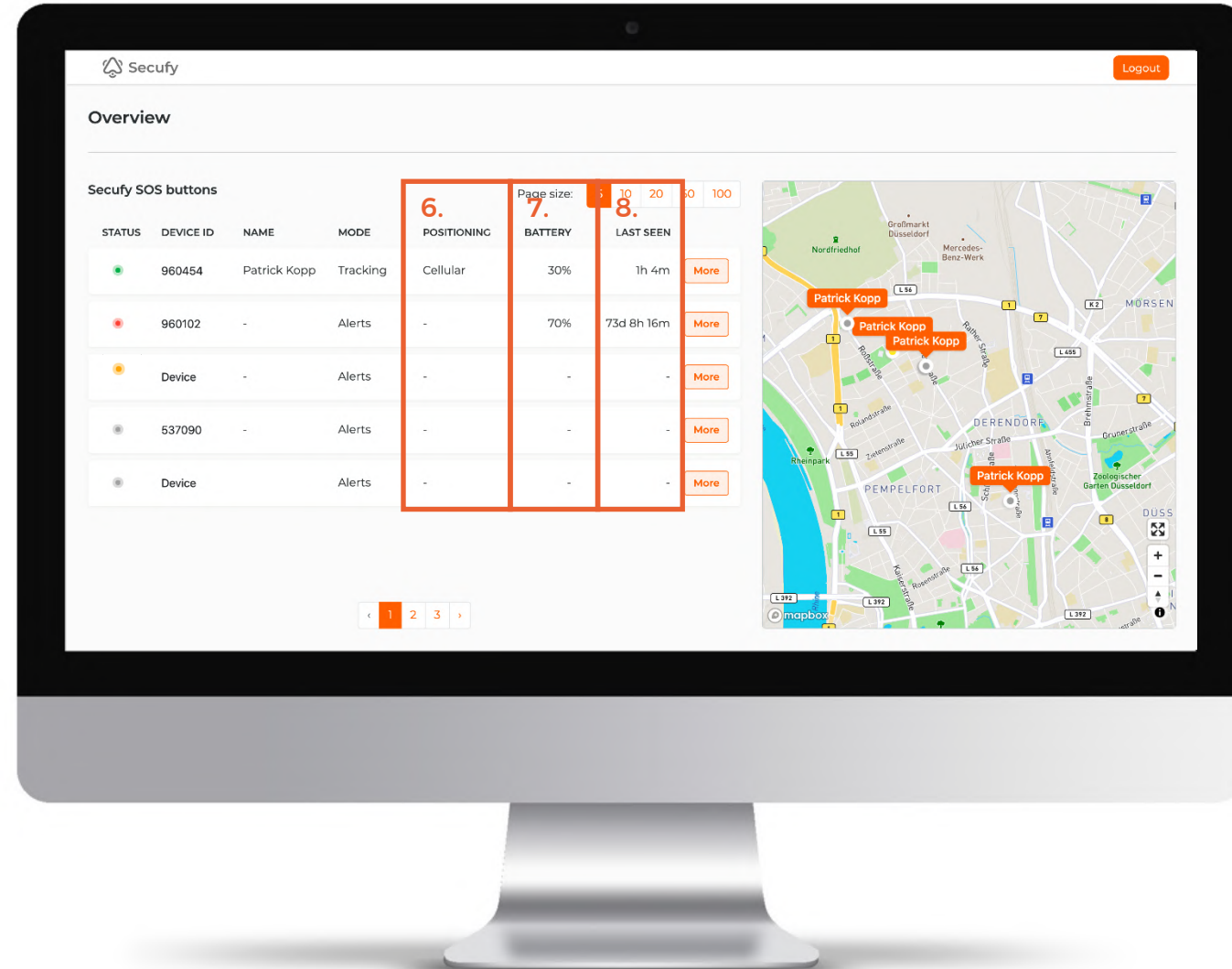
BLE (only if your button is BLE enabled and when in proximity to Secufy indoor beacons pre-installed in buildings, accuracy high)

## 7. BATTERY

Remaining battery capacity in % (pls note: at low battery levels, the button LED is also blinking red)

## 8. LAST SEEN

Time in days/hours/minutes since last connection to the server. The button is supposed to connect once every 24 hours to give an update of its battery state (= „heartbeat“).





# Overview

## 9. PAGE SIZE

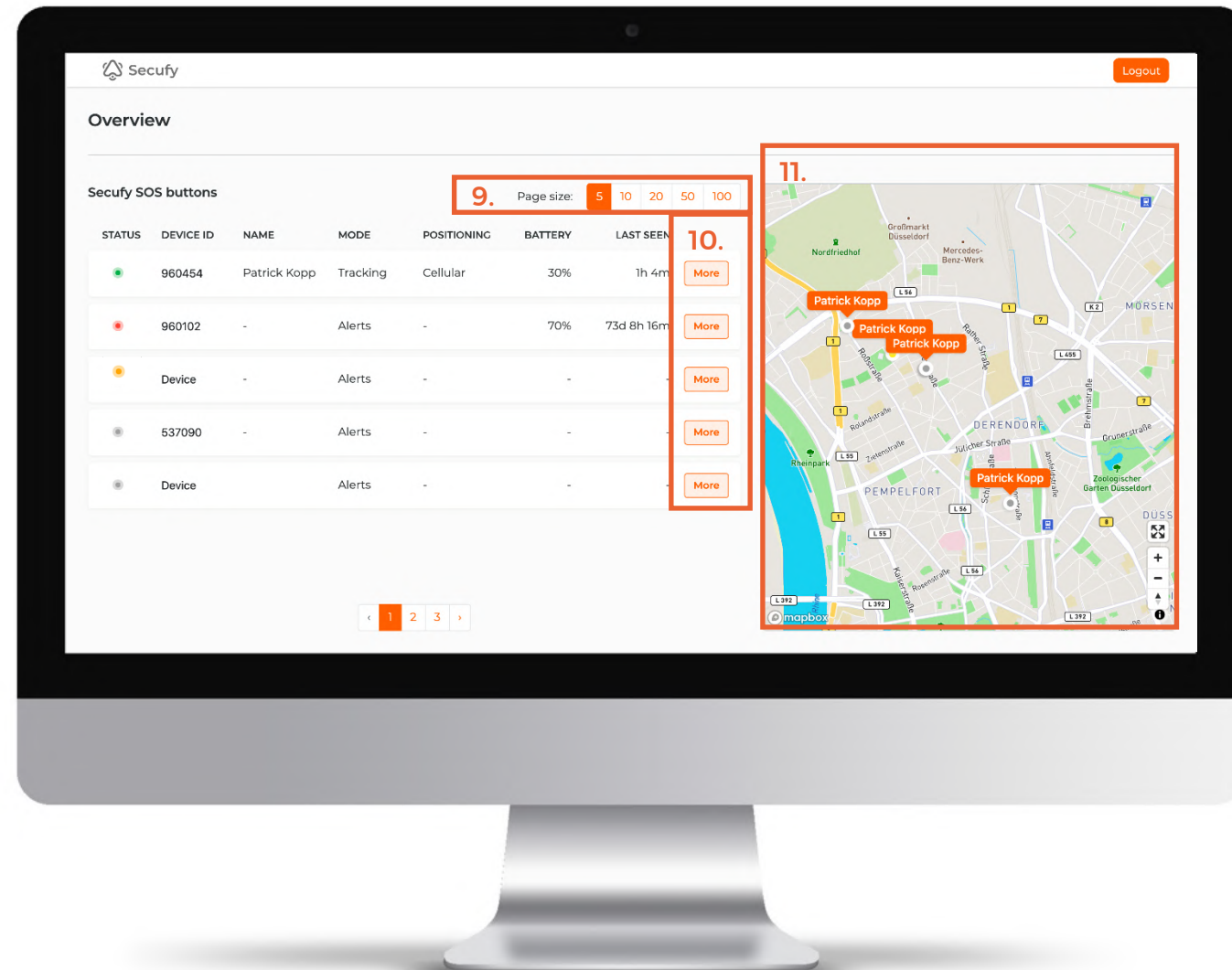
How many Buttons are listed per page

## 10. MORE

Click here to enter and adjust the settings of your Button (details on next page)

## 11. MAP

Shows the last known position of your Button. Depending on screen size and resolution, the map might be shown below the list or to the right



# More

Enter and adjust the settings of your Button

## 1. Button ID

All characters of the Button hardware ID, fixed

## 2. General

Name of user wearing the button as displayed in the SOS messages. User E-Mail for 'battery low'-messages

## 3. 'Battery low'-message recipients

Who will receive the E-mails for 'battery low'-messages? Pls choose.

## 4. (SOS) Message recipients

4a Add new recipient / 4b Edit recipient (details on next page)

4c Assign the current helper configuration to all available buttons

The screenshot shows the Secufy web interface for configuring a button. The interface is divided into several sections, each highlighted with a red box and a numbered callout:

- 1. SOS button: 8944502201194960454**: The top section showing the fixed hardware ID.
- 2. General**: A section for user information, including "Name of user/asset:" (Patrick Kopp), "Email of user (used for battery low messages):" (pk@codestryke.com), and "Battery-low message recipients (email):" (User plus all of alert message recipients). A "Save" button is at the bottom right.
- 3.**: A callout box showing the "Battery-low message recipients (email):" dropdown menu with options: "None", "User email (above) only", "User plus first of alert message recipients" (highlighted in orange), and "User plus all of alert message recipients".
- 4. Message recipients:**: A section for alert message recipients, showing a list of recipients (Patrick Kopp, Email: pk@codestryke.com, Phone number: -) and a "4a" callout for adding a new recipient. Below this is a "4b" callout for editing a recipient.
- 4c**: A callout box showing the "Assign to all" button in the "Settings" dialog.

The "Settings" dialog box is open, showing the text: "Assign the current helper configuration to all available buttons." and the "Assign to all" button.



# Message recipients

**1.** Edit/add Name, E-mail and Phone number.  
Phone number in international code starting with +  
(for USA and Canada +1 234 567 8900 for example).  
Empty spaces, - or / characters will be deleted;  
strings containing other characters will not be  
accepted

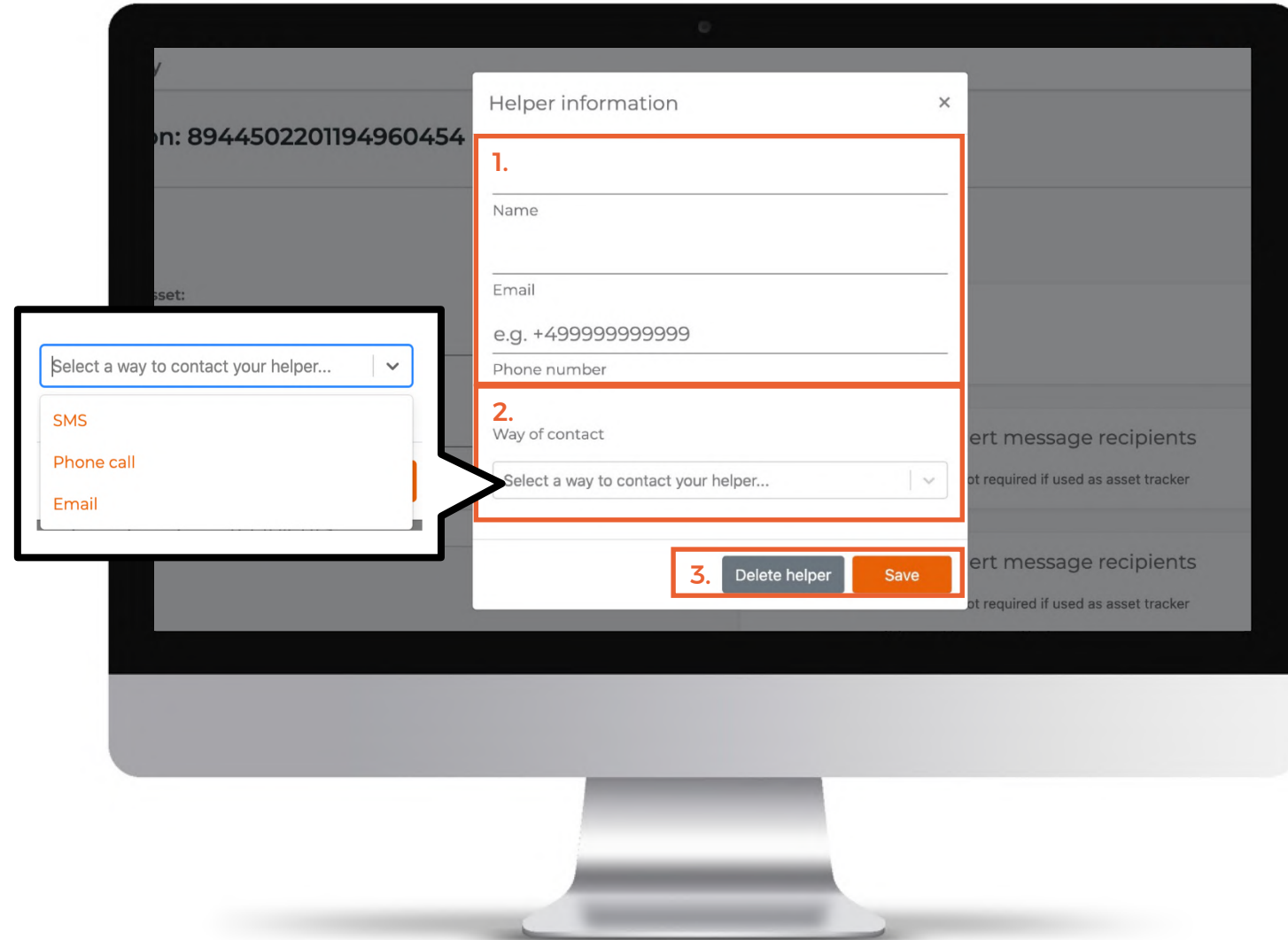
**2.** Select a way your individual Helpers receive the  
SOS alerts triggered by the button (pressing it 3  
times). You can select one or more amongst three  
different contact options:

SMS: text message

Phone call: automatic text to speech conversion for  
land lines unable to retrieve SMS text messages

E-mail: E-mail address. NOTE: make sure the  
recipients include the sending address into their  
whitelist.

**3.** Delete/save your recipient



# Secufy Button – General Information



Secufy is a smart and simple SOS alerting solution. Take your portable Secufy everywhere you go. Just press the Button three times to instantaneously notify your family and friends in case of emergency. Secufy works indoors as well as outdoors.

Alerting others of a personal safety threat is conventionally done through a mobile phone, text message, landline phone or traditional "panic buttons" or apps. Secufy overcomes hurdles associated with each of these methods. No additional base station or smartphone is required.



Secufy Button

Qi Charger

# Best way to charge your Button

The delivery of your Secufy Button includes a charging pad. Charging is done inductive and contactless. For best use do not put the Qi-charger into a laptop – please put it directly on the USB wall power supply. You'll see the LED light of your charging pad in a small hole on the opposite site of the cable plug. The battery lifetime is up to 3 months per charge.

## LED LIGHTS

**Continuous red:** stand-by

**Continuous blue:** charging

**8 sec blue, 0,5 sec red:** Cyclic Charging ok

**Pink and blue blinking:** Pad has not enough power out of USB plug (please get stronger power supply)

**Red blinking:** fault (try disconnect and reconnect charger)

**Alternating blue and red one second each:** fully charged



Qi Charger

# USE Secufy as SOS Button or Tracking Device – Meaning of LED-lights

The Secufy button behavior is based on clicks done by the user.



## USE SECUFY AS SOS-BUTTON:

**Press 3 times:** LED flashes blue and will send a SOS-Signal to your determined helpers. This may take a few minutes.

**blue LED flashes after pressing the Button:**  
search for GPS-signal

**blue LED flashes faster up to very fast:**  
connection to the network, transmitting SOS-signal

**red LED (every 15 sec):**  
battery is low, recharge battery

**red LED (every 2 sec):**  
battery is very low, recharge battery immediately



## USE SECUFY AS A TRACKER:

User presses 5 seconds to activate the tracking mode: GPS location is determined by the button and shared with the Secufy system periodically. Update intervals are set to 15 minutes. In future software updates it will be settable to anywhere between 1 per minute to 1 per day. One battery charge (re-chargeable) will perform approx. 150 location updates.

If you would like to leave/end the tracking mode, please press 5 seconds again.

# Secufy Button – Technical specifications



Security for you

## PHYSICAL CHARACTERISTICS

<b>Dimensions</b>	6 x 5 x 1,6 cm / 2 3/8 x 2 x 5/8 inch
<b>Material</b>	UV-resistant, water-resistant hard plastic
<b>Weight</b>	30 gr / 1 oz
<b>Color</b>	Anthracite
<b>Battery</b>	Rechargeable up to 1000 times, up to 1-3 months per charge (Wireless Qi-Charging)

## GEOLOCATION PRECISION

<b>Primary</b>	GPS: 5-10m range
<b>Secondary</b>	GSM: 500m to 10km

## COMMUNICATIONS

<b>Compatibility</b>	2G mobile connectivity, eSim, GPS positioning
<b>Consumption</b>	Less than 1 MB/month
<b>SIM size</b>	SIM-on-chip
<b>Use</b>	1 button per user
<b>How it works</b>	User presses button 3 times, localized (GPS) SOS message is sent via SMS/Email/Text to Voice to up to 5 individual receivers per button

User presses 5 seconds: GPS location is determined by the button and shared with the Secufy system periodically. Update intervals can be set anywhere between 1 per minute to 1 per day. One battery charge (re-chargeable) will perform approx. 150 location updates.

# Secufy contact

Your contract partner is Secufy GmbH. We ´ll take care of the network management and are the principal contact point for our customers.

## **Holger Mannweiler, CEO and Founder**

Secufy GmbH, Anni-Eisler-Lehmann-Str. 3

55122 Mainz, Germany

[www.secufy-sos.com](http://www.secufy-sos.com)

[info@secufy-sos.com](mailto:info@secufy-sos.com) / [holger.mannweiler@secufy-sos.com](mailto:holger.mannweiler@secufy-sos.com)

