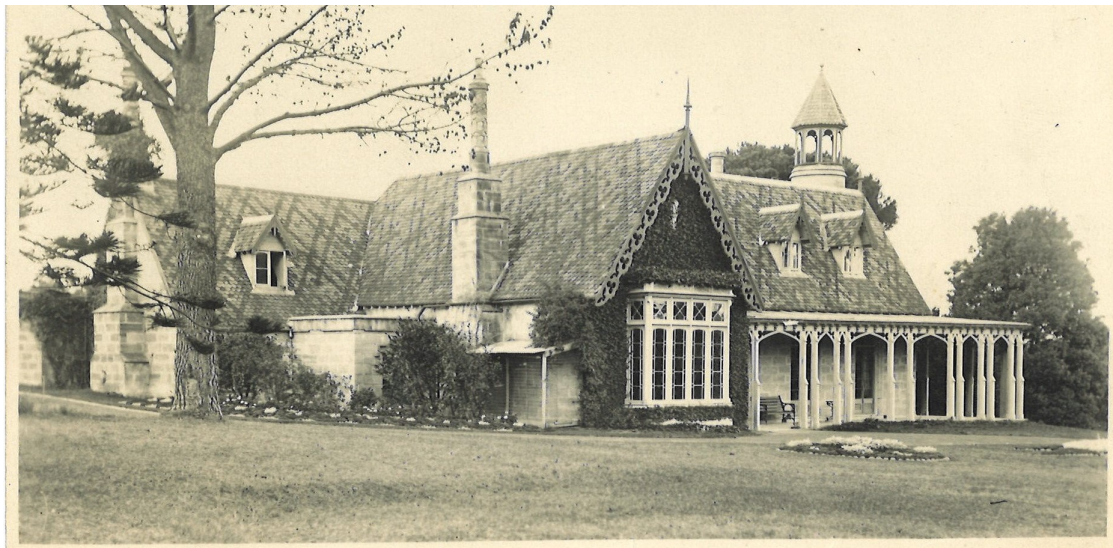




## ***HISTORY AND SNAGS WALK***

### ***THE RANGERS ESTATE***



“The Rangers”  
(Mosman Local Studies Collection, Mosman Library Service)

Join Mosman Historical Society committee members on a walk through the Rangers Estate which was subdivided for sale from 1886. The downhill walk will start at the top of Rangers Avenue and finish at Reid Park. Places to be viewed include the sites of the demolished houses (“The Rangers” owned by Oswald Bloxsome and the artist Oswald Brierly’s residence on the estate) and the streets associated with the original 40 acre estate. Heritage listed buildings and features will also be pointed out along the way. At the end of the walk barbecued sausage sandwiches will be served (BYO drinks).

**Please contact David Carment ([davidcarment@mac.com](mailto:davidcarment@mac.com) or 0418857182) to book places.**

**Venue:** Participants meet at the Spofforth St/Rangers Ave roundabout. It is suggested that you park at Reid Park, then catch the 230 bus (every 30 minutes) from Mosman Wharf to Cremorne, and walk down Spofforth St to the meeting point.

**Date:** **Monday 4 March 2024**

**Time:** **5.00 PM**

Members free

Visitors \$5 donation (includes a sausage)

For information telephone 0418857182

**Please ring if the weather looks uncertain.**