



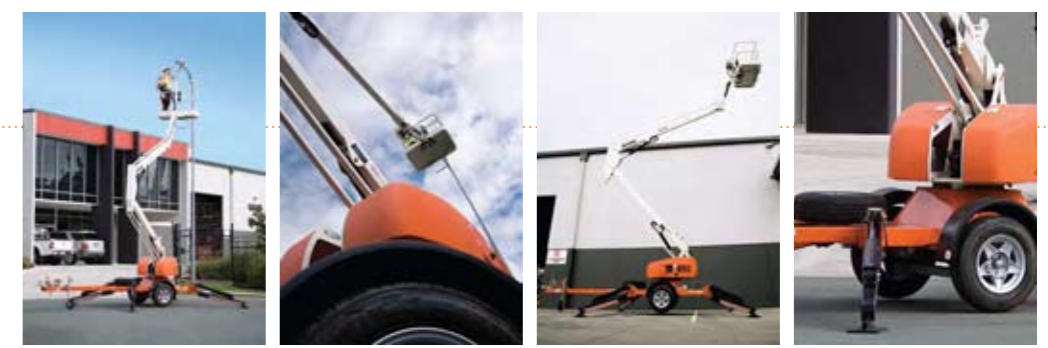
TRAILER MOUNT  
MHP13/35



TRAILER MOUNT

# MHP 13/35

The Snorkel MHP Trailer Mounted Series can be used extensively in a wide range of construction, building and maintenance applications.



The heavy duty MHP13/35 trailer mounted articulated boom lift features a safe and stable working height of up to 12.6m, steel platform with a two man capacity and outrigger/boom safety interlocks making this unit easy to operate.

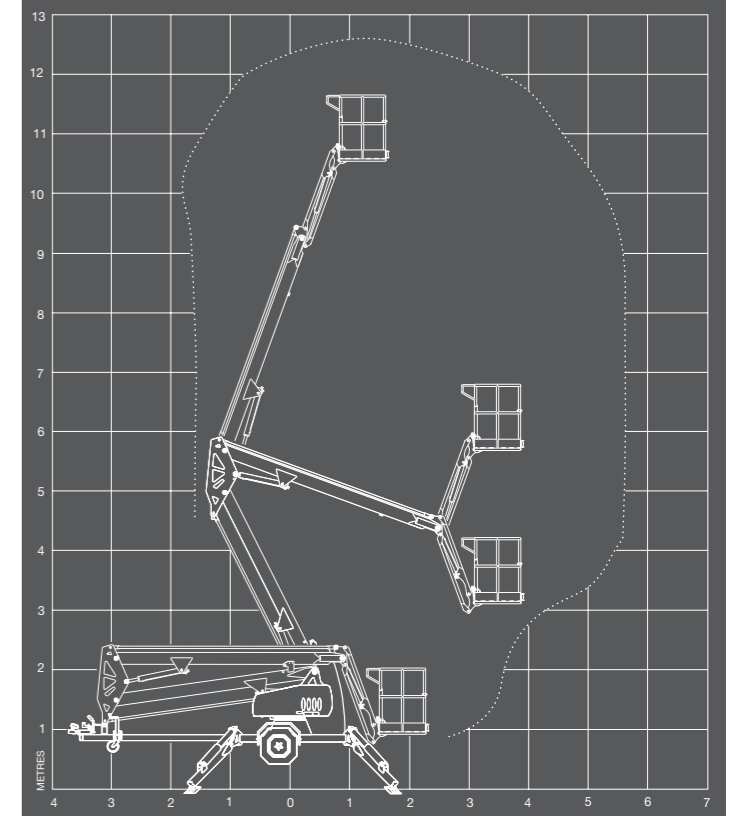
## Key features

- High strength steel boom and base construction
- Proportional speed control
- Heavy duty tow coupling
- Heavy duty jockey wheel
- Hydraulic disc brakes
- Reliable gasoline engine with optional bi-energy power
- Versatile jib boom (+70° to -70°)
- Articulating boom sections allow for up and over reach manoeuvres
- 600V AC rated wire to platform
- A two man steel platform with a safe load rated at 250kgs standard
- Outrigger / boom safety interlocks
- Lockable hinged covers and hour meter
- Independently operated hydraulic outriggers

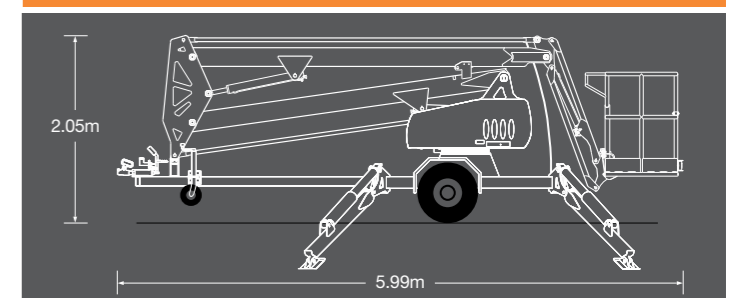
## Additional options

- 360° continuous rotation turntable
- Flashing light
- 110/240VAC GFCI power to platform
- Platform rotator
- Lifting lugs
- Automatic stabilisers
- Alternative power options:
  - » Diesel engine
  - » 24V DC battery power
  - » 110 / 240V AC motor & pump
  - » Combinations of the above with gas or diesel to give a bi-energy power source

## WORKING SPAN



## COMPACT DESIGN



TRAILER MOUNT  
**MHP13/35**



# Contact us

At Snorkel, we've made it easier for you to find the information you need. Speak to us or visit our website [www.snorkel.com.au](http://www.snorkel.com.au) for more information.

- Sales  
1300 900 700
- Technical support  
1300 700 450
- Parts and service  
1300 103 040

## Specifications

|                                     |  |                       |
|-------------------------------------|--|-----------------------|
| Working height                      | 12.6m  | 41'                   |
| Platform height                     | 10.6m  | 35'                   |
| Rated load – standard               | 250kg  | 550lb                 |
| Rated load – with rotator           | 227kg  | 500lb                 |
| Platform size                       | 1.25 x 0.78 x 1.07m  | 4' 1" x 2' 6" x 3' 5" |
| Platform construction               | Steel  |                       |
| Platform levelling                  | Mechanical   |                       |
| Boom type                           | Articulating   |                       |
| Horizontal reach                    | 5.6m at 6m   | 18' 4" at 19' 7"      |
| Max wind speed 12.5m/sec            | 45kph  | 28mph                 |
| Turntable rotation                  | 540° non-continuous  |                       |
| Power source – standard             | Gasoline engine 5.5hp  |                       |
| Hydraulic system                    | Proportional electro/hydraulic                                       |                       |
| Stabilisation                       | 4 independently operated hydraulic outriggers with safety interlocks |                       |
| Stabiliser footprint – maximum      | 3.7 x 3.6m   | 12' 1" x 11' 8"       |
| Standard colour                     | Snorkel orange base and covers, white turret and booms               |                       |
| Transport height                    | 2.05m  | 6' 7"                 |
| Overall length                      | 5.99m  | 19' 7"                |
| Overall width – outriggers extended | 3.7m   | 12' 1"                |
| Overall width – outriggers stowed   | 1.58m  | 5' 2"                 |
| Tyre size                           | 185 R14  |                       |
| Brakes                              | Hydraulic disc   |                       |
| Maximum towing speed                | 80km/hr  | 50mph                 |
| Maximum rated axle capacity         | 1750kg   | 3858lb                |
| Weight – standard model             | 1200kg   | 2645lb                |
| Trailer tongue weight               | 65kg   | 143lb                 |
| Insulation rating                   | Nil  |                       |

**DANGER:** Standard models described in this brochure are NON-INSULATED and do not provide electrocution protection from contact with or close proximity to energised conductors which is pointed out on the decals and placards attached to the machine. Products in this brochure comply with relevant ANSI and Australian Standards. This literature is for illustrative purposes only. Consult Operating/Maintenance and Parts Manuals for proper procedures. Specifications may vary and are subject to change without notice.



DEALER STICKER

**Snorkel**  
AUSTRALIA

TRAILER MOUNT

MHP13/35

**Snorkel**  
AUSTRALIA