

4017PS Telehandler



4 section steel boom
protects hoses

Perkins 75kW
turbo engine

Enclosed air
conditioned cab

Frame sway +/- 9 degrees

Pneumatic construction
tread tyres

Adjustable stabilisers
at angle to chassis to
increase forward and side
stability

QUESTIONS TO ASK

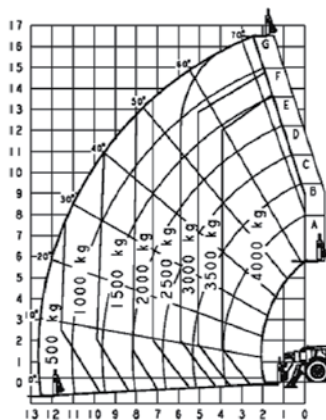
- What are the ground conditions in the work area?
- What are the site conditions travelling around the site?
- What is the working height needed for the job?
- What is the outreach required for the job?
- What is the rated capacity of the load on forks?
- Do you need to lift a freely suspended load, with a jib?

KEY SELLING POINTS

- Smooth control, Powershift 4 speed forward and 3 speed reverse, 4 wheel drive
- Proportional lift, telescope and fork tilt
- Proportional function stabilisers operate at angle to chassis to increase longitudinal and lateral stability
- LMIS system (3B6) for use with jib for freely suspended loads
- Oscillating rear axle, assists 4 wheel drive traction
- Front 2 wheel steer, 4 wheel steer, and crab steer
- Hydraulic frame sway (levelling)
- Australian specification air conditioning for operator comfort
- Large construction lug pattern air filled tyres
- Plug in JLG analyser in the cabin, and dash panel display analyser to indicate system functions for servicing and adjustment
- Perkins Engine 4 cylinder turbo. High speed, 4 cylinder, liquid (water cooled). 75kW /100HP engine with pre-glow and post-glow feature reduces emissions.

APPLICATIONS

- Landscape contractors
- Brick and block layers
- All maintenance and construction work
- Building supplies
- Facilities maintenance
- Agriculture
- Steel building construction



SPECIFICATIONS

Engine – Standard:

Engine Make	Perkins
Displacement	4.4 Ltr
Gross Output	74.5kW

Transmission:

Drive	4W
Transmission Type	Powershift
No. of Gears Fwd/Rev	4F - 3R

Tyres:

Tyres Front Standard	405/70-24
Tyres Rear Standard	405/70-24
Pneumatic Tyre Type	MPT04 Industrial

Chassis:

Chassis Levelling	Yes
Steering Type	2W/4W/Crab

Hydraulics:

Pump Type	Axial Piston
Maximum Flow	132 ltr/min
System Pressure	250 Bar
No. of Auxiliary Services	1

Capacities:

Fuel Tank	140 Ltr
-----------	---------

Static Dimensions:

Length (Less Forks)	6.1m
Overall Width	2.38m
Height	2.52m
Maximum Lift Height	16.7m
Wheelbase	2.85m
Ground Clearance	0.42m
Turn Radius Over Tyres	3.8m
Turn Radius Over Forks	5.4m

Operating Weight:	11,995kg
--------------------------	----------

Performance - General:

Load Centre	0.6m
Breakout Force	70kN

Summary - On Tyres:

Maximum Lift Capacity	4,000kg
Maximum Forward Reach	9.7m
Height with Maximum Capacity	7.0m
Capacity at Maximum Height	500kg
Capacity at Maximum Reach	500kg
Maximum Reach with 1,000kg	6.6m

Summary - On Outriggers:

Maximum Lift Capacity	4,000kg
Maximum Forward Reach	12.5m
Height with Maximum Capacity	13.5m
Capacity at Maximum Height	3,000kg
Capacity at Maximum Reach	500kg
Maximum Reach with 1,000kg	10.0m