



# H43 TPX



## Performance

- 42.2 m working height
- 19.9 m maximum outreach
- Load capacity:  
230 kg (2 persons) /  
450 kg (3 persons)
- 2 axis jib rotation, 150°  
horizontal and 140° vertical

## Productivity

- Strong, quick and  
maneuverable boom
- Compact and easy to  
transport
- Faster lifting to full height
- Unequaled all terrain  
capabilities

## Easy to use

- Continuous movement  
control
- Continuous outreach  
control
- Smooth and precise  
controls



**Haulotte**   
GROUP

More than lifting



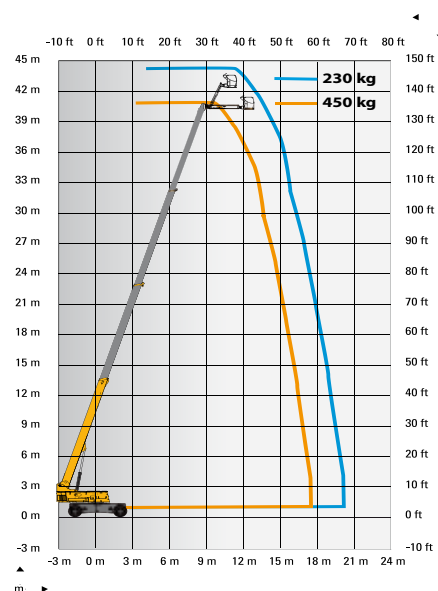
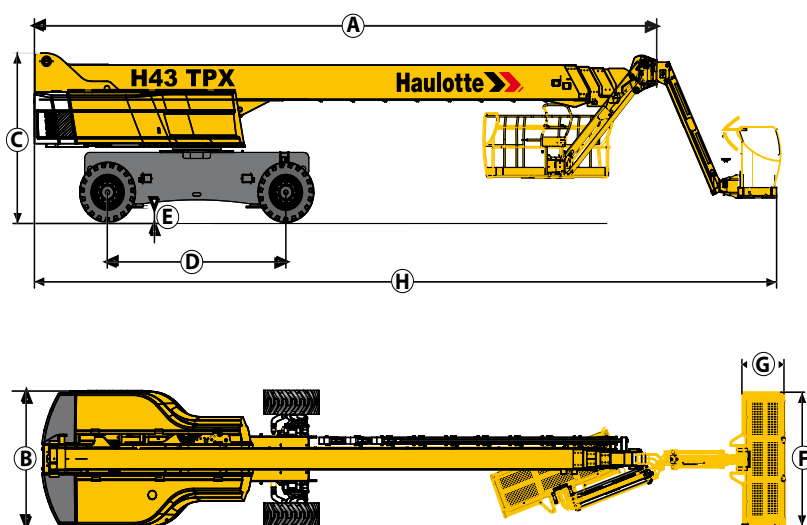
# H43 TPX

## ROUGH TERRAIN TELESCOPIC BOOMS

### TECHNICAL DATA

### H43 TPX

Working height	42.2 m
Platform height	40.2 m
Horizontal outreach	19.9 m
Lift capacity	230 - 450 kg
<b>F</b> x <b>G</b> Platform size	2.44 x 0.8 m
<b>H</b> Length - stowed	14.5 m
<b>A</b> Length - storage	12.3 m
<b>B</b> Width	2.53 m
Width - with extended axles	3.3 m
<b>C</b> Height - stowed	3.05 m
Vertical jib rotation	140° (+70/-70)
Platform rotation	174° (+87/-87)
Boom rotation angle	73° (+73/-0)
Turntable rotation	360°
Tailswing	150 cm
<b>D</b> Wheelbase	3.5 m
<b>E</b> Ground clearance	38 cm
Tilt	3°
Drive speed	0.3 - 5 km/h
Gradeability	40 %
Turning radius - outside	5.74 m
Tires - foam-filled	445/65-22.5
Engine	55.5 kW - 75.4 hp (Europe) / 62.4 kW - 84.9 hp (outside Europe)
Weight	20600 kg



### STANDARD EQUIPMENT

- 4 Wheel drive and steer
- Front oscillating axle increasing stability on uneven ground
- 2 extendable axles
- Differential wheel lock increasing rough terrain capacity
- Proportional controls enhancing comfort and safety
- 4 simultaneous movements for highest productivity
- Dual load capacity : 230 kg (2 persons) / 450 kg (3 persons)
- Sound and light alarm for tilt and load
- Electric pump system and emergency descent
- 12 V battery / electrical control system
- Swing out engine tray for ease of maintenance
- Safe to use in winds up to 45 km/h – 28 mph
- Large basket with drop bar entry gate
- Hydrostatic transmission
- Power to platform (Female plug in the basket 110V/220V)
- Low fuel level indicator (upper control box)
- Engine pre-heater with light indicator
- Hourmeter
- Tow hooks and lift hooks

### OPTIONS AND ACCESSORIES

- On-board 3.3kW generator
- Cold weather kit
- Alarm package (motion alarm and travel alarm)
- Travel alarm
- Rotating beacon
- 15W flashing light
- Air line to platform
- 55W platform working light
- Hydraulic oil cooler
- Hydraulic oil in tank and circuit for warm countries
- Biodegradable hydraulic oil
- Automatic Overspeed Air Shutdown Valve (Electric one-way valve, flame arrestor, spark arrestor)
- Upper control box protection cover (transparent plastic and fixed place)
- Battery cut-off
- Fuel pre-filter
- Cap with key for diesel tank

