

ELECTRIC SCISSOR LIFTS

PARTS MANUAL

S06-E / S06-EC

(Series 3)



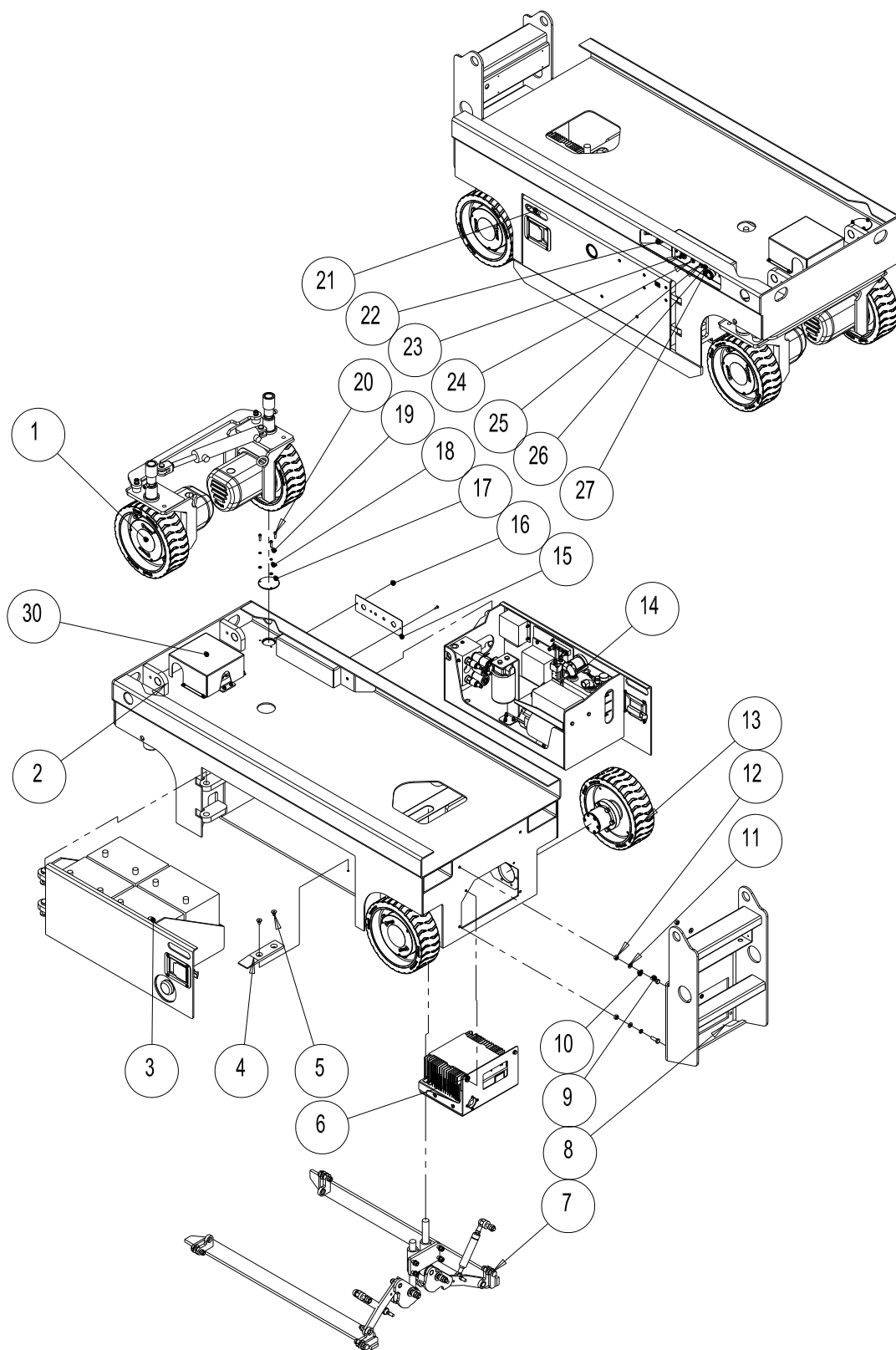
WARNING

THE MANUFACTURER SHALL NOT BE HELD LIABLE IN CASE OF FAULTS OR ACCIDENTS DUE TO NEGLIGENCE, INCAPACITY, INSTALLATION BY UNQUALIFIED TECHNICIANS AND IMPROPER USE OF THE MACHINE

DO NOT OPERATE THIS MACHINE UNTIL YOU READ AND UNDERSTAND ALL THE DANGERS, WARNINGS AND CAUTIONS IN THIS MANUAL

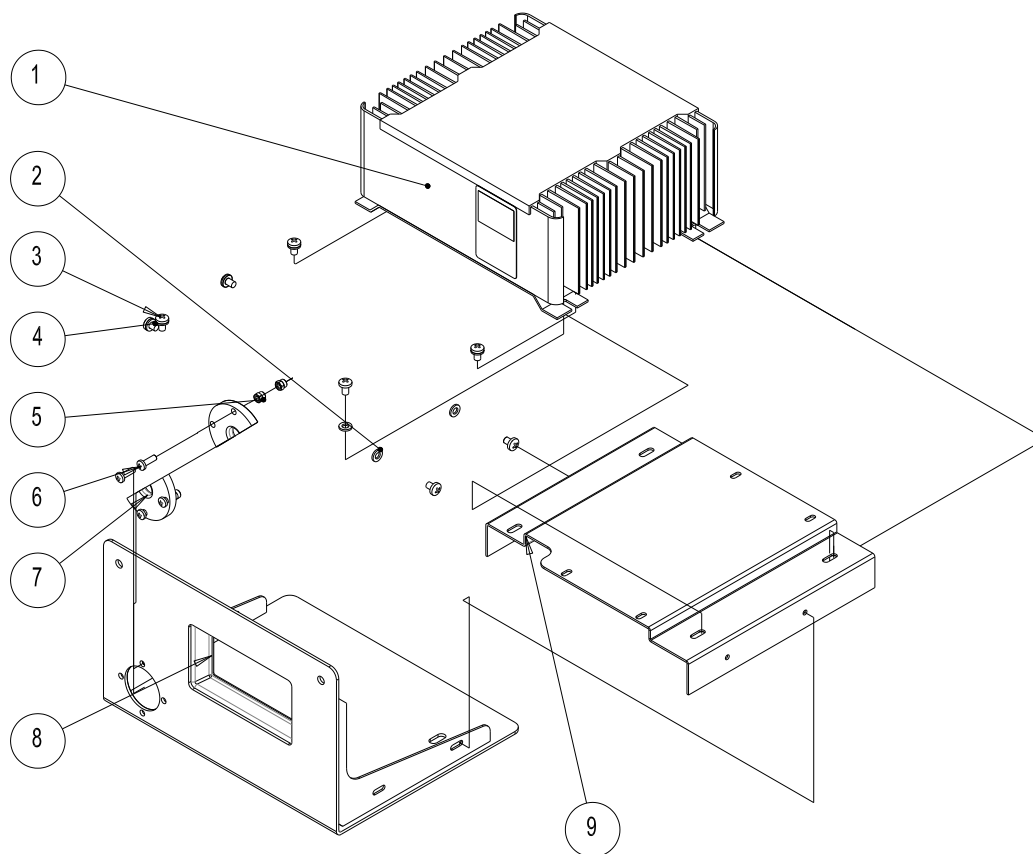
1	Chassis Assembly	2
1.1	Charger	4
1.2	Steer Linkage	5
1.3	Non-steer Wheel	7
1.4	Pothole Protection Assembly	9
1.5	Battery Pack Module	1 1
1.6	Power Unit Module	1 3
1.6.1	Hydraulic Tank	1 5
1.6.2	Control Electrical	1 6
1.7	Switch Cover	1 8
2	Scissor Assembly	2 0
3	Platform	2 2
4	Hydraulic Cylinder	2 5
5	Schematic	2 6

1 Chassis Assembly



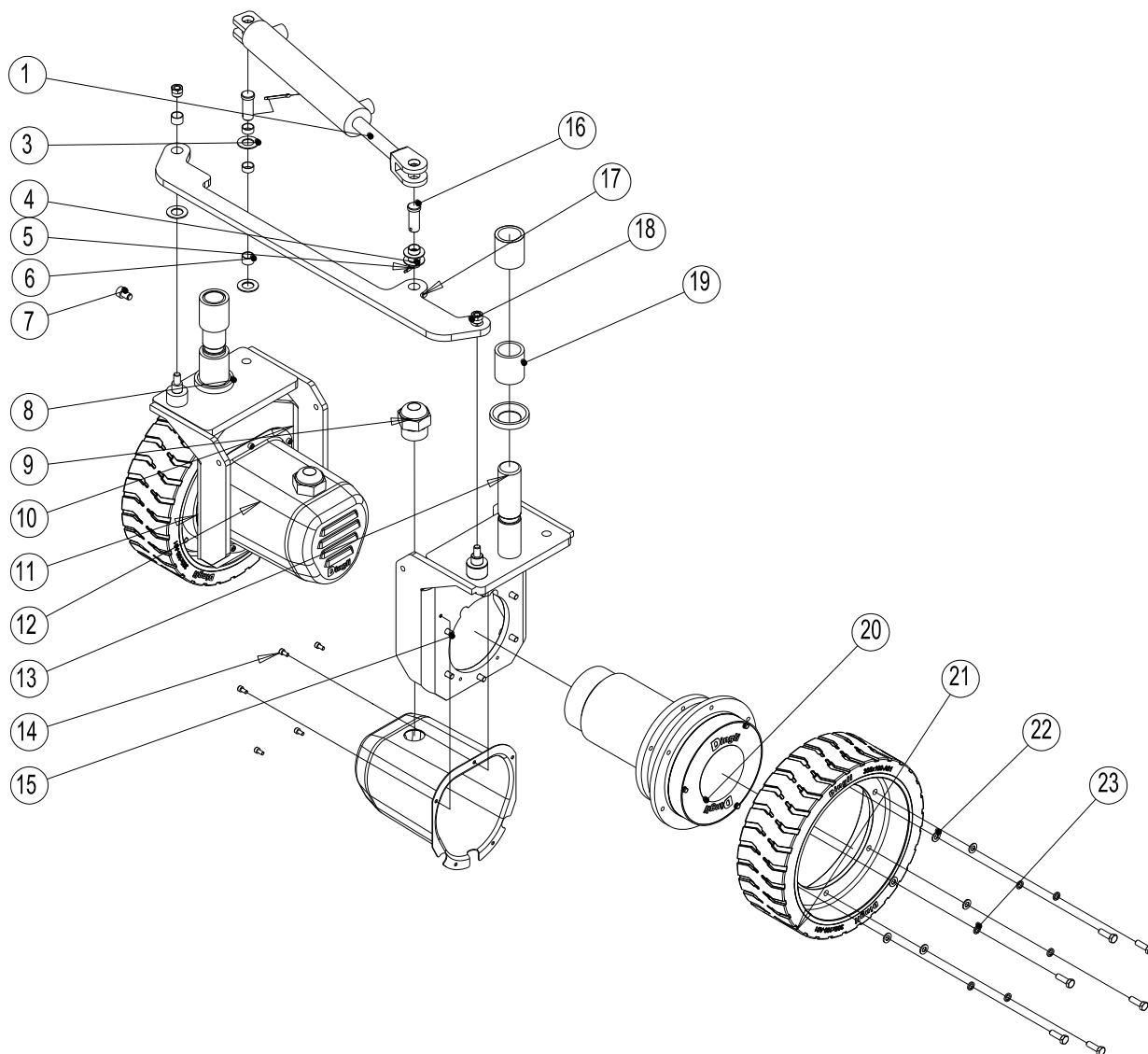
No.	Parts No.	Description	Qty.	Remark
1	JCPT0807-112000	Steer Linkage and Wheels,	1	
2	JCPT0807-111000	Chassis	1	
3	JCPT0807-113000	Battery Pack Module	1	
4	JCPT0807-110002	Spacer	2	
5	GB/T 70.3-2000	Screw M10×16	4	
6	JCPT0807-116000	Charger	1	
7	JCPT0807-115000	Pothole Protection	1	
8	JCPT0807-117000	Ladder	1	
9	GB/T 5783-2000	Bolt M10×30	4	
10	GB/T 93-1987	Washer 10	4	
11	GB/T 97.1-2002	Washer 10	4	
12	GB/T 6170-2000	Nut M10	4	
13	JCPT0807-118000	Non-steer wheel	2	
14	JCPT0807-114000	Pump station	2	
15	JCPT1212HD-13401	Plate	1	
16	GB/T 818-2000	Screw M5×12-H	2	
17	JCPT0807-110001	Cover	2	
18	GB/T 97.1-2002	Washer 6	6	
19	GB/T 93-1987	Washer 6	6	
20	GB/T 70.1-2000	Screw M6×20	6	
21	JCPT1212HD-12002	Lock	2	
22		Handle	1	
23		Key switch	1	
24		Up-down switch	1	
25		reset switch	1	
26		Indicator	1	
27		Emergency stop	1	
28	GB/T 93-1987	Washer 8	4	
29	GB/T 70.1-2000	Screw M8×30	4	
30	JCPT0807-710000	Switch Cover	1	

1.1 Charger



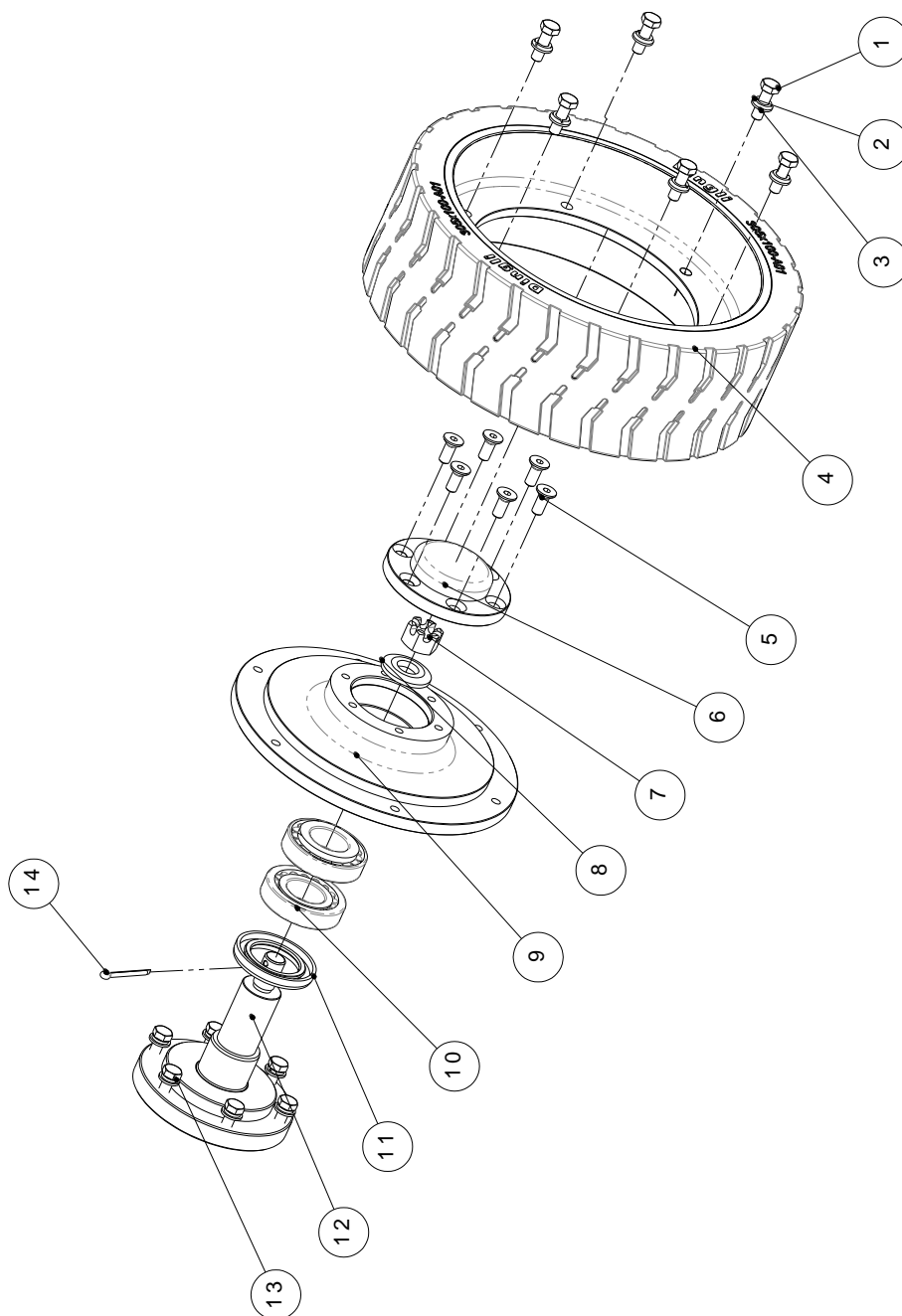
No.	Parts No.	Description	Qty.	Remark
1	inchwp-2430	Charger	2	
2	GB/T 97.1-2002	Washer 6	8	
3	GB/T 818-2000	Screw M6×8-H	4	
4	GB/T 818-2000	Screw M6×8-H	4	
5	GB/T 6182-2000	Nut M5	4	
6	GB/T 818-2000	Screw M5×6-H	4	
7	JCPT1212HD-12003	Half-round batten	2	
8	JCPT0807-116100	Board	1	
9	JCPT0708-116001	Charger seat	1	

1.2 Steer Linkage



NO.	Parts NO.	Description	QTY.	Remark
1	JCPT0807-112300	Steering cylinder	1	
3	WC18SF	Bearing	6	
4	GB/T 91-2000	Pin 4x28	2	
5	SF-8-1618	Bearing	4	
6	SF-12-1618	Bearing	4	
7	JCPT0807-112004	Screw	1	
8	JCPT0807-112003	Washer	2	
9		Water-proof joint	2	
10	JCPT0807-112200	Right yoke	1	
11	JCPT0708-112400	Drive motor	2	
12	JCPT0708-112005	Cover	2	
13	JCPT0807-112100	Left yoke	1	
14	GB/T 70.1-2000	Screw M5x10	11	
15	GB/T 5783-2000	Bolt M8x30	24	
16	JCPT0807-112002	Pin	2	
17	JCPT0807-112001	Tie rod	1	
18	GB/T 6182-2000	Nut M5	2	
19	GM354550	Bearing	4	
20	JCPT0807-112006	Cap	2	
21	JCPT0807-112010	Wheel	2	
22	GB/T 97.1-2002	Washer 4	24	
23	GB/T 93-1987	Washer 8	24	

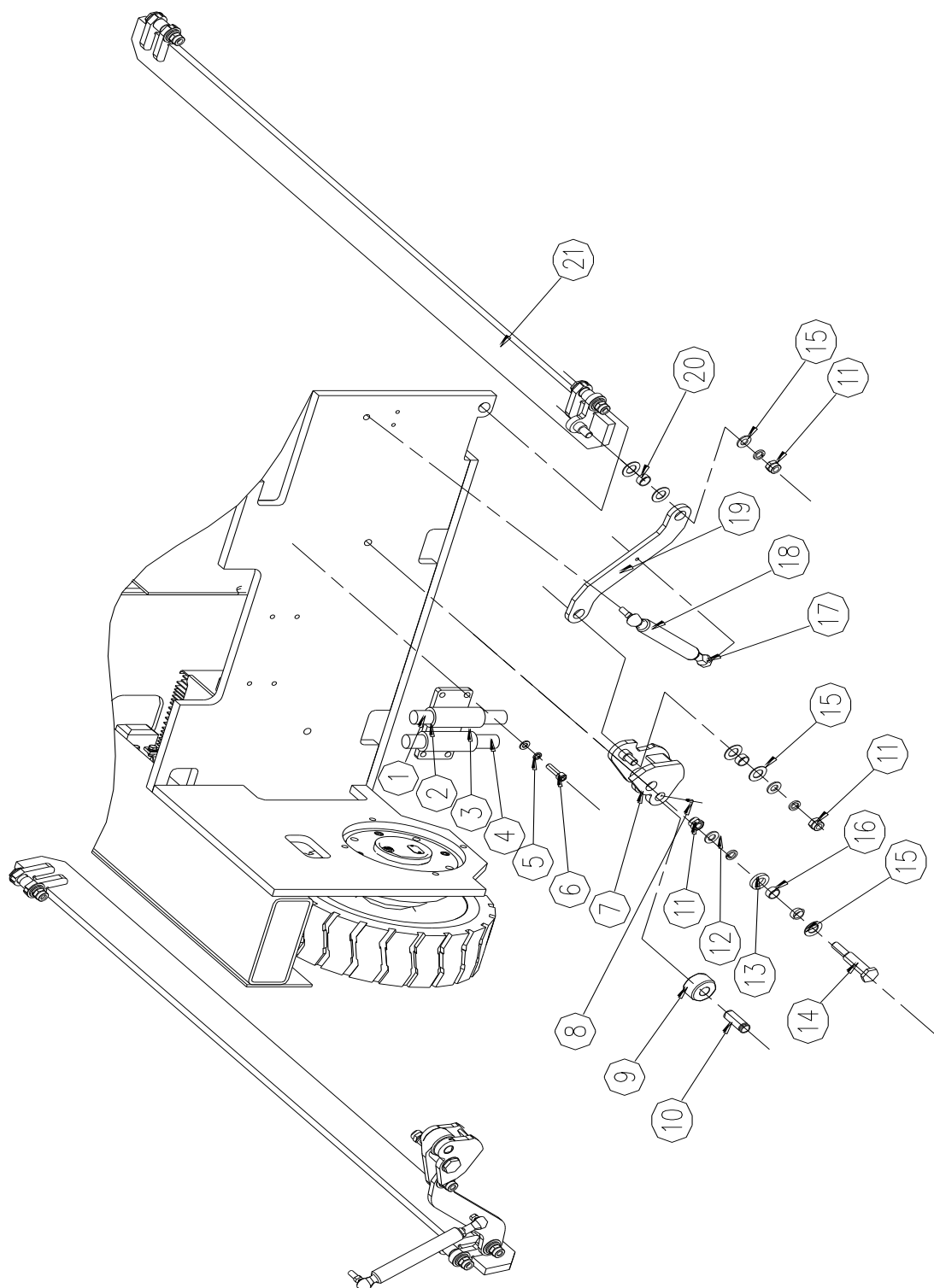
1.3 Non-steer Wheel



NO.	Parts NO.	Description	QTY.	Remark
1	GB/T 5783-2000	Bolt M 8x25	6	
2	GB/T 93-1987	Washer 8	12	
3	GB/T 97.1-2002	Washer 8	12	
4	JCPT0807-112010	Wheel	1	
5	GB/T 70.3-2000	Screw M8x20	6	
6	JCPT1212DC-10103	Cap	1	
7	GB/T 9459-1988	Nut M16x1.5	1	
8	JCPT0807-118002	Washer	1	
9	JCPT0708-118001	Terminal pad	1	
10	GB/T 297-1994	Bearing 32006	2	
11	GB/T13871.1-2007	Seal FB38 62 8	1	
12	JCPT0807-118200	Wheel Axle seat	1	
13	GB/T 5783-2000	Bolt M8x30	6	
14	GB/T 91-2000	Pin 4x36	1	

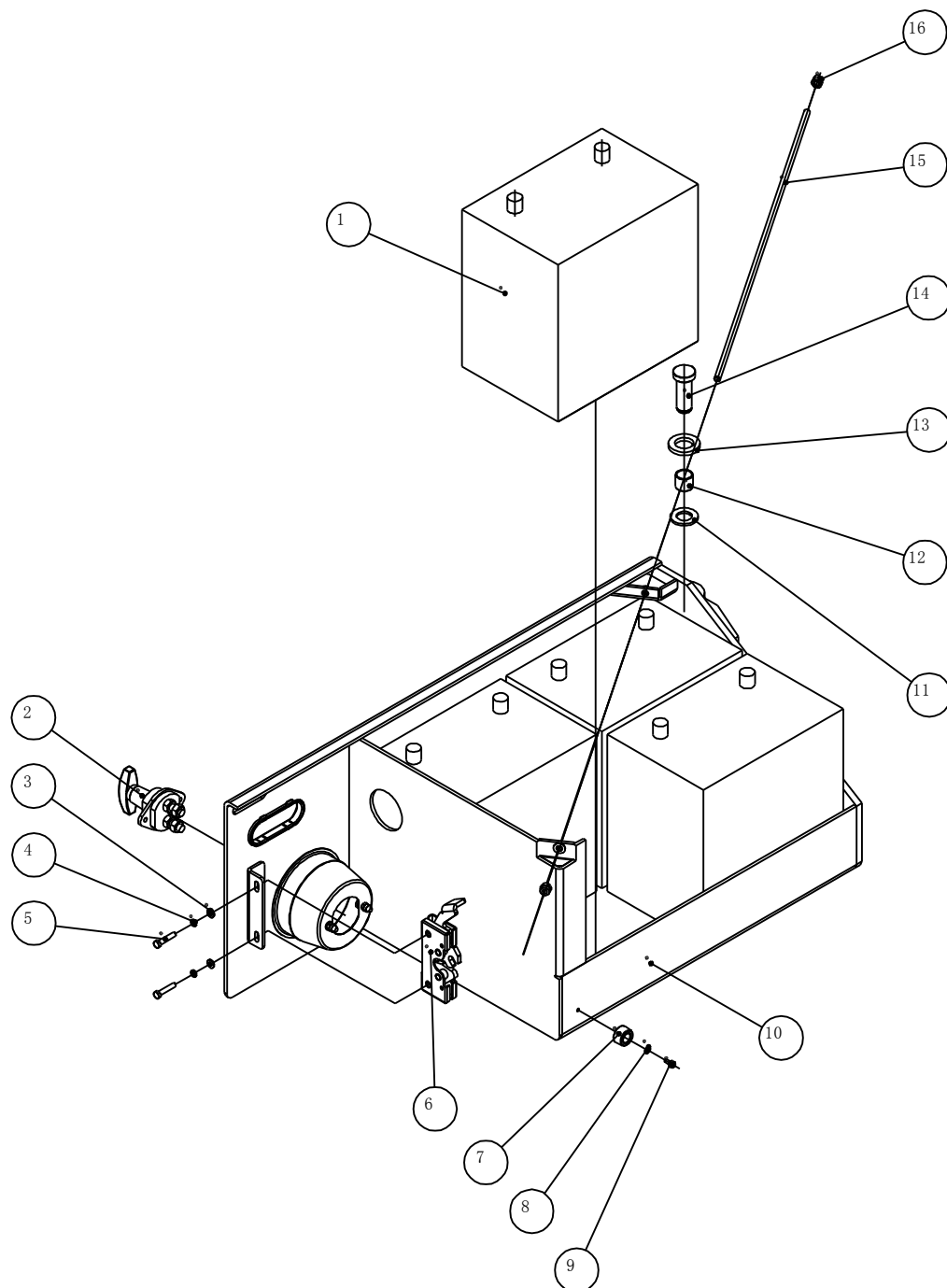
1.4 Pothole Protection Assembly

S06-E



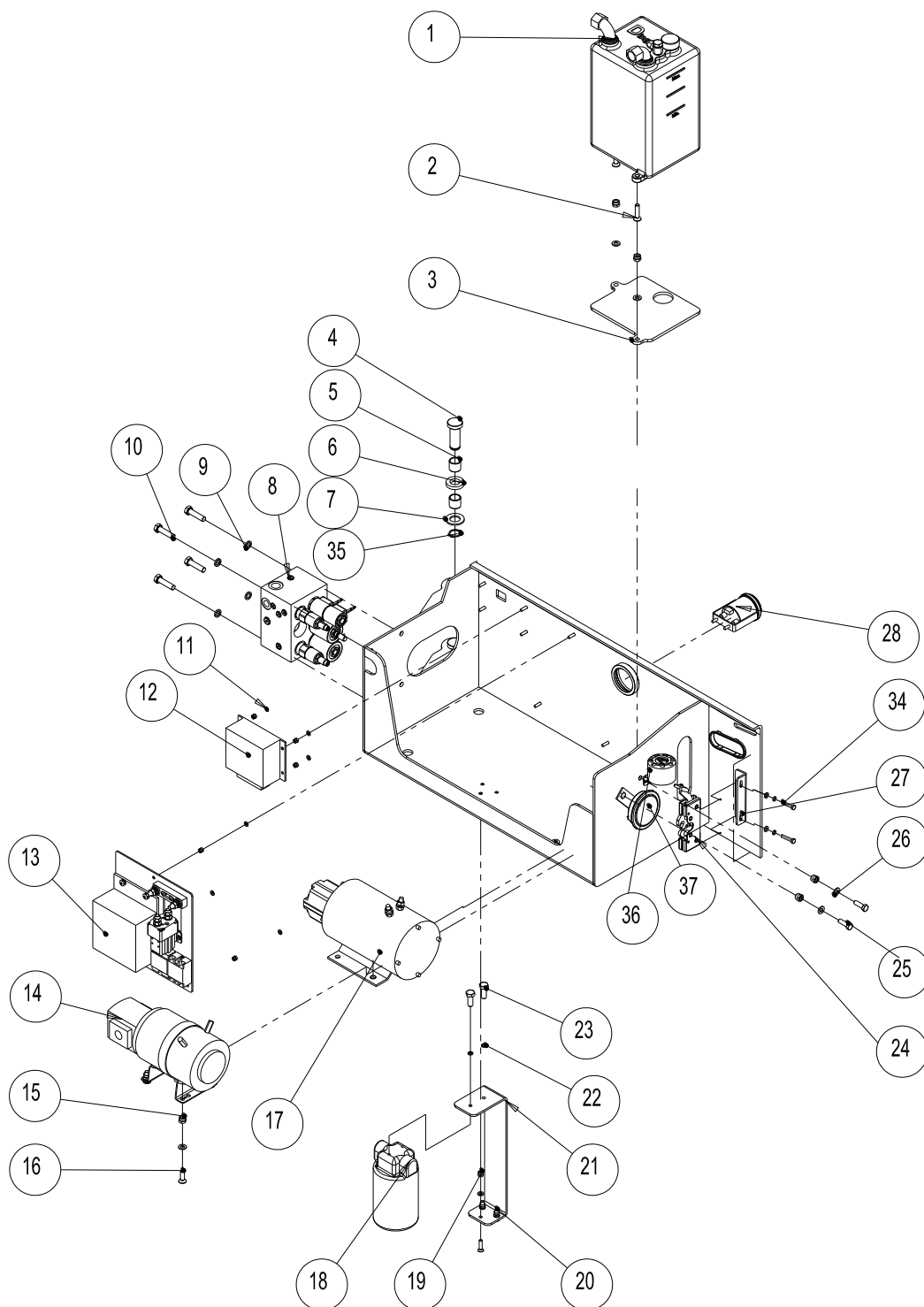
NO.	Parts NO.	Description	QTY.	Remark
1	JCPT0808HD-15010B	Pot hole guide	1	
2	JCPT1212HD-15100B	Pot hole Pusher	2	
3		Bearing 3236-20	4	
4	GB97.1-2000	Washer 10	8	
5	GB93.1-2000	Washer 10	8	
6	GB70.1-2000	Screw M10X35	8	
7	JCPT1212HD-15040	Crank	2	
8	GB/T79-2000	Screw M5x10	2	
9	JCPT1212HD-15005	Wheel	2	
10	JCPT1212HD-15006	Pin	2	
11	GB/T6182-2000	Nut M14	8	
12	GB/T95-2000	Washer 14	8	
13	JCPT1212HD-15007	Washer	2	
14	JCPT1212HD-15008	Pin	2	
15		Spacer 2036-015	18	
16		Bearing 2023-09	10	
17	ZDYC1535-6001	Gas spring	2	
18	JCPT1212HD-15001	Gas spring pin	2	
19	JCPT0807-15001	Linker	2	
20		Bearing 2023-20	4	
21	JCPT0807-15030	Pot hole guard	2	

1.5 Battery Pack Module



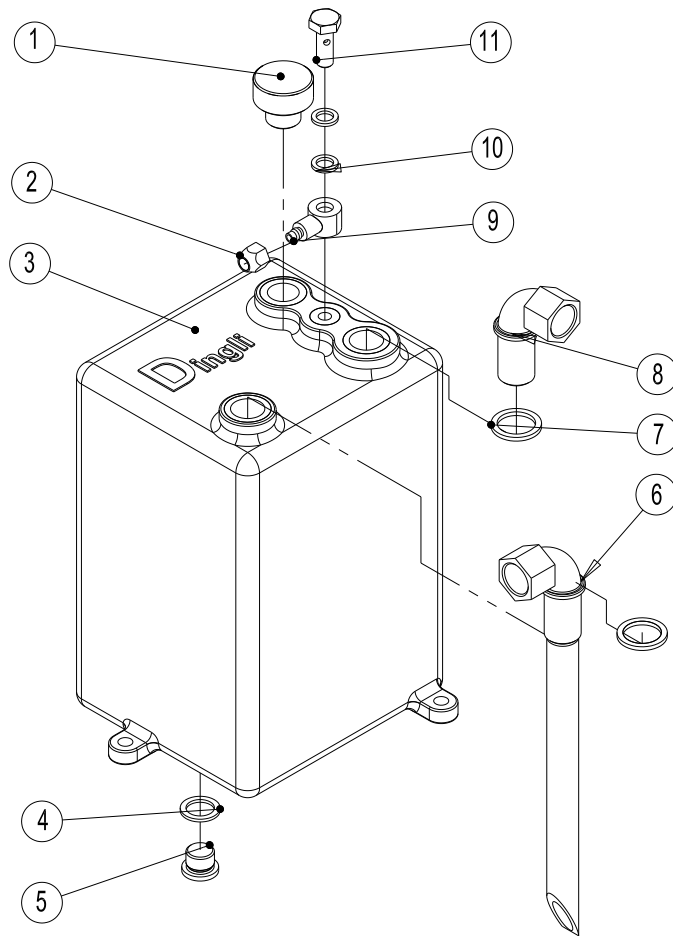
NO.	Parts NO.	Description	QTY.	Remark
1	Trojan 105	Battery	4	
2	JK452	Power switch	1	
3	GB/T97.1-2002	Washer 6	2	
4	GB/T93.1-2000	Washer 6	2	
5	GB/T5783-2000	Bolt M6X30	2	
6	C16E Lock	Lock	1	
7	JCPT3707M-41002	Latex mat	1	
8	GB/T97.1-2002	Washer 5	1	
9	GB/T70.1-2000	Screw M5X10	1	
10	JCPT0807-113100	Battery box	1	
11	GB/T97.1-2002	Washer 20	2	
12	CSB-50	Bearing	2	
13	JCPT1212HD-15007	Washer	2	
14	JCPT0807-113001	Pin	2	
15	JCPT1212HD-12006	Perch	1	
16	GB/T6182-2000	Nut M8	2	

1.6 Power Unit Module



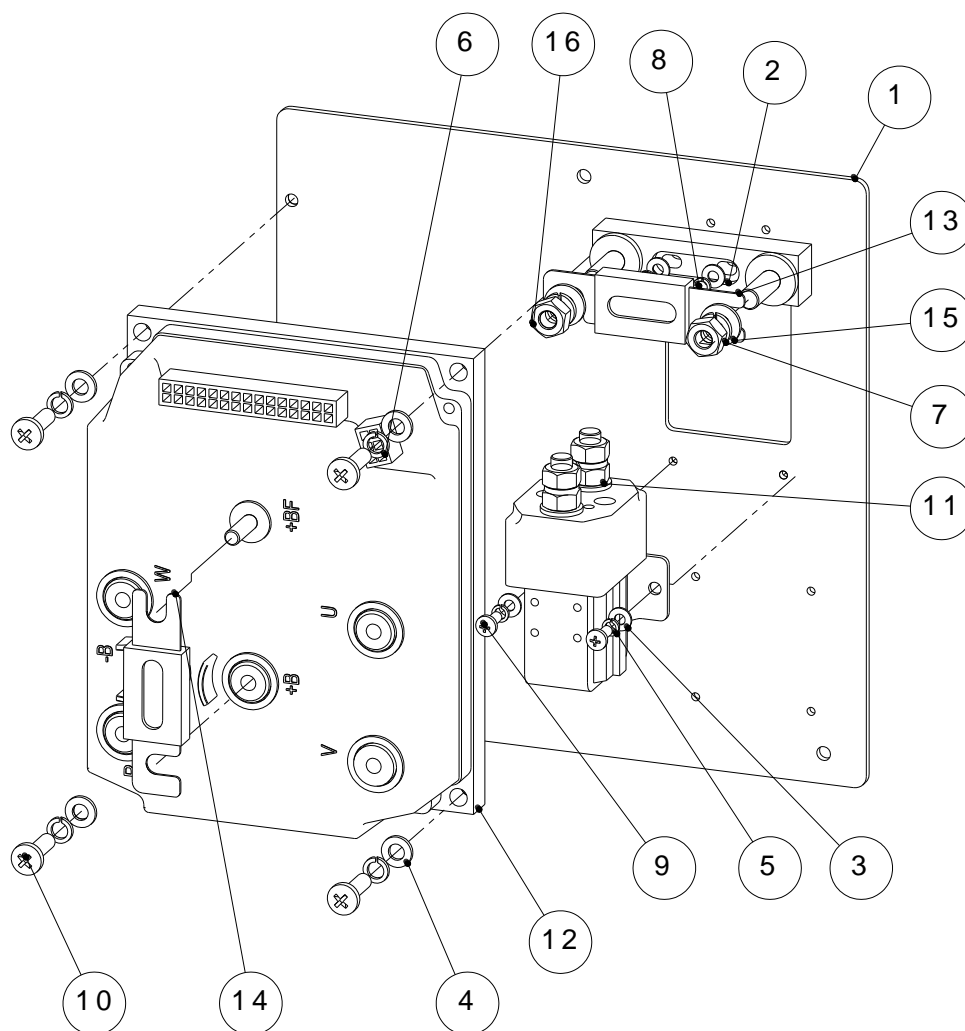
NO.	Parts NO.	Description	QTY.	Remark
1	JCPT0807-124200	Hydraulic oil tank assembly	1	
2	GB/T 70.3-2000	Screw M8x35	2	
3	JCPT0807-114012	Spacer	1	
4	JCPT0807-113001	Hinge	2	
5	sf-20-2023	Bearing	4	
6	JCPT0630-14018	Copper washer	2	
7	GB/T 97.1-2002	washer 20	2	
8	DPH-112D	Valve	1	
9	GB/T 93-1987	Washer 10	4	
10	GB/T 5783-2000	Bolt M10x40	4	
11	GB/T 97.1-2002	Washer 5	7	
12		ECU modular	1	
13	JCPT0807-114400	Plate	1	
14	JCT0807-114300	Pump	1	
15	GB/T 6182-2000	Nut M8	8	
16	GB/T 70.3-2000	Screw M8x25	4	
17	JCPT0807-114500	Pump	1	
18		Oil filter	1	
19	GB/T 6182-2000	Nut M6	7	
20	GB/T 70.3-2000	Screw M6x25	3	
21	JCPT1212HD-13003	Filter seat	1	
22	GB/T 93-1987	Washer 6	2	
23	GB/T 5783-2000	Bolt M10x25	2	
24		Lock	1	
25	GB/T 5783-2000	Bolt M8x25	2	
26	GB/T 97.1-2002	Washer 8	9	
27	JCPT0807-114100	Pump box	1	
28		Motor hour meter	1	
33	GB/T 6182-2000	Nut M5	11	
34	GB/T 818-2000	Screw M5x16-H	4	
35	GB/T 894.2-1986	Snap Ring 22	2	
36		Alarm	1	
37		Horn	1	

1.6.1 Hydraulic Tank



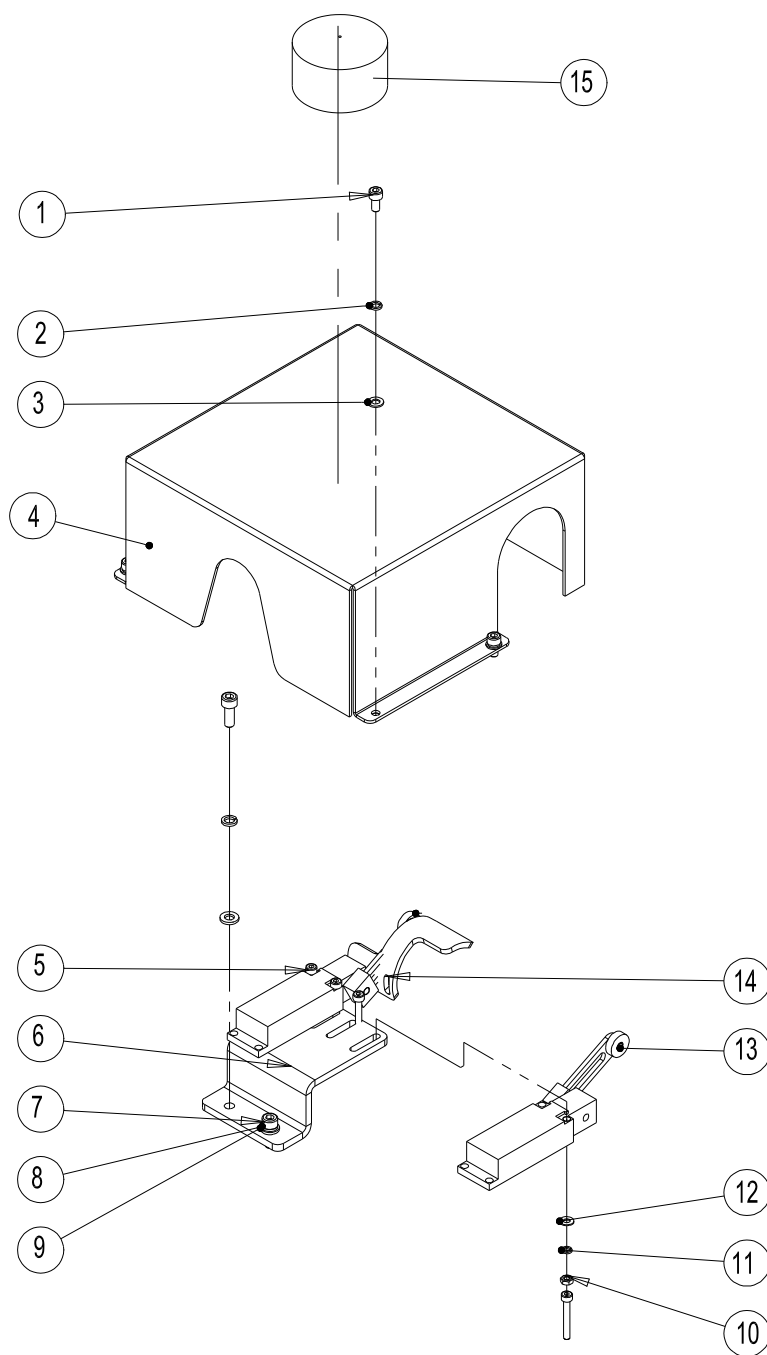
NO.	Parts NO.	Description	Qty.	Remark
1	7JAA002	Breath nut	1	
2	JCPT0807-114203	Nut	1	
3	JCPT0807-114210	Tank	1	
4	JB/T982-1977	Washer 3/8	1	
5	JB/ZQ4444-1986	Plug screw	1	
6	JCPT0807-114220	Suction pipe	1	
7	JB/T982-1977	Washer 22	2	
8	WSV15LA3C	Nut M22x1.5	1	
9	JCPT0807-124202	Nut	1	
10	JB/T982-1977	Washer 10	2	
11	JB/ 999-77	Bolt M10x1x28	1	

1.6.2 Control Electrical



NO.	Parts NO.	Description	Qty.	Remark
1	JCPT0807-114401	Seat	1	
2		Fuse seat	1	
3	GB/T 97.1-2002	Washer 4	4	
4	GB/T 97.1-2002	Washer 6	4	
5	GB/T 93-1987	Washer 4	4	
6	GB/T 93-1987	Washer 6	4	
7	GB/T 93-1987	Washer 8	2	
8	GB/T 818-2000	Screw M5×10	2	
9	GB/T 818-2000	Screw M4×10	2	
10	GB/T 818-2000	Screw M6×20	4	
11	QCC26C 100A/10B24V	DC Contactor	1	
12	FC2279	Control modular	1	
13	250A	Fuse	1	
14	355A	Fuse	1	
15	GB/T 97.1-2002	Washer 8	2	
16	GB/T6170-2000	Nut M8	2	

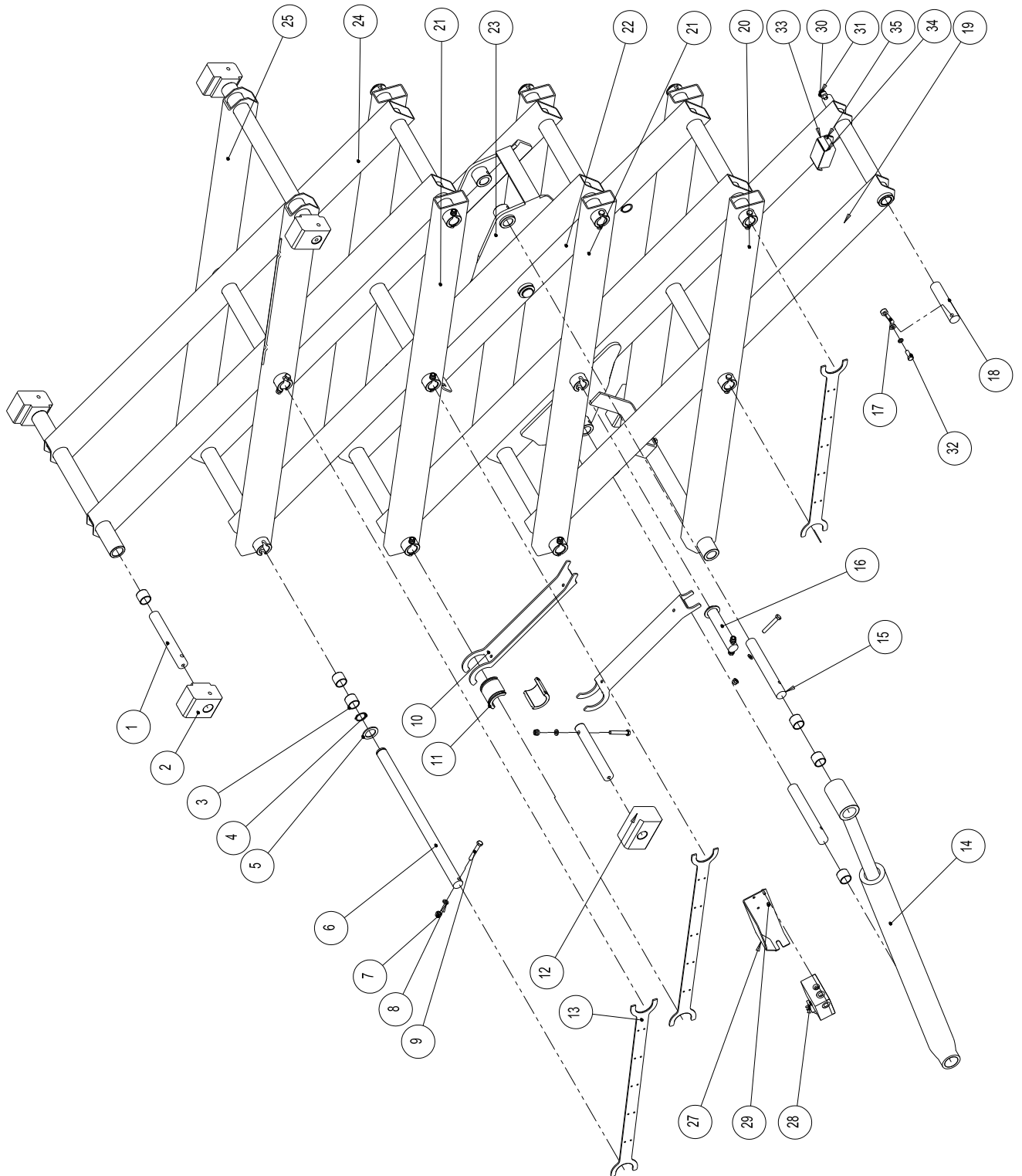
1.7 Switch Cover



Zhejiang Dingli Machinery Co., Ltd

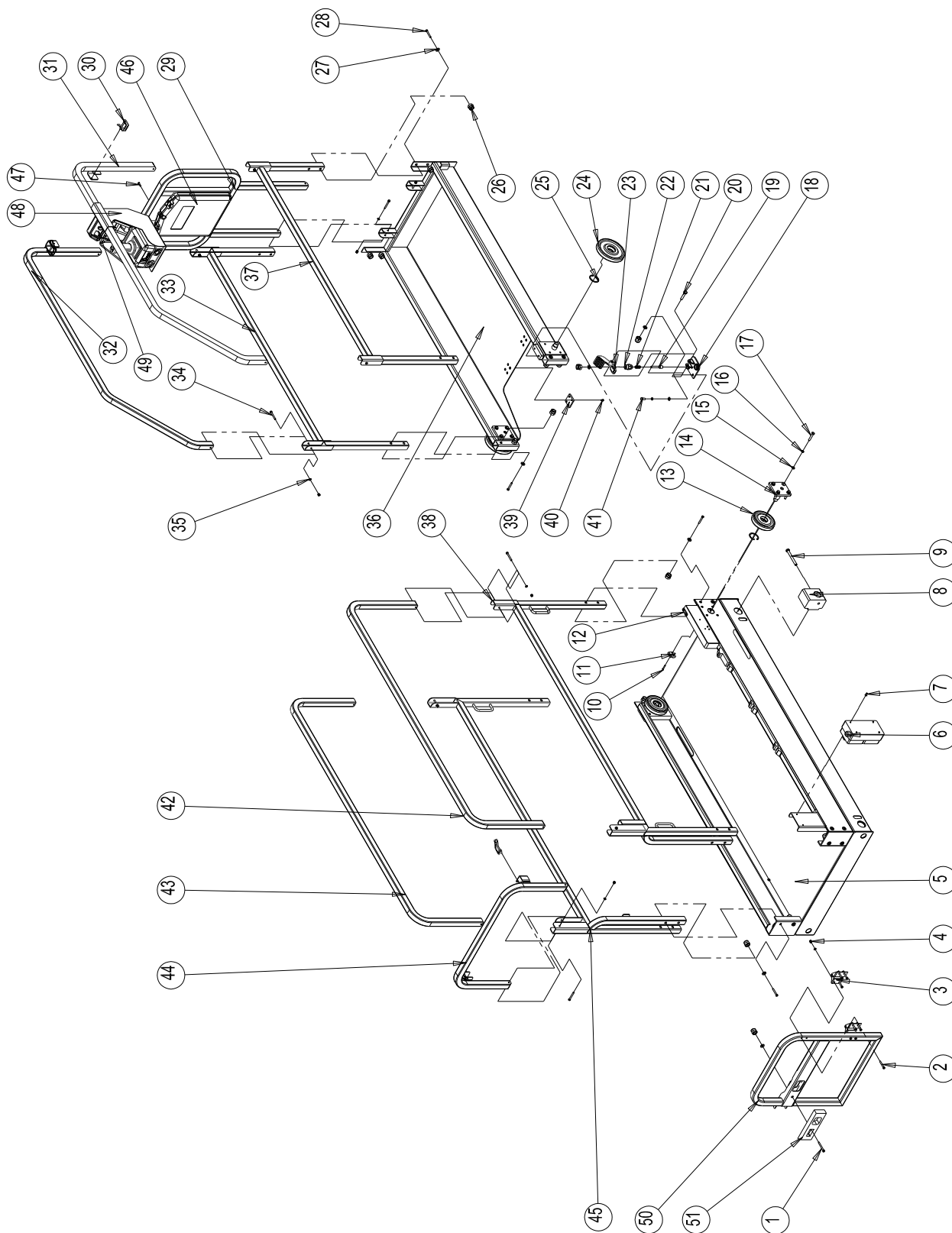
NO.	Parts NO.	Description	Qty.	Remark
1	GB/T 70.1-2000	Screw M5×10	4	
2	GB/T 93-1987	Washer 5	4	
3	GB/T 97.1-2002	Washer 5	4	
4	JCPT0807-710001	Cover	1	
5	GB/T 70.1-2000	Screw M4×30	4	
6	JCPT0807-710002	Key seat	1	
7	GB/T 70.1-2000	Screw M6×16	2	
8	GB/T 93-1987	Washer 6	2	
9	GB/T 97.1-2002	Washer 6	2	
10	GB/T 6170-2000	Nut M4	4	
11	GB/T 93-1987	Washer 4	4	
12	GB/T 97.1-2002	Washer 4	4	
13		Limited Switch	2	
14	JCPT0807-710003	Signal plate	1	

2 Scissor Assembly



NO.	Parts NO.	Description	Qty.	Remark
1	JCPT0807-131002	Axle 1	6	
2	JCPT0807-131012	Slider	4	
3		Bearing3236-30	32	
4	GB/T 894.2-1986	Bead flange 32	11	
5	JCPT0807-131006	Washer	11	
6	JCPT0807-131003	Axle	9	
7	GB/T 889.1-2000	Nut M14	14	
8	GB/T 97.3-2000	Washer 10	14	
9	GB/T 5780-2000	Bolt M12×90	14	
10	JCPT0807-131009	Safety arm	2	
11	JCPT0807-131008	Safety arm bushing	2	
12	JCPT0807-131001	Slider	2	
13		Slider		mirror
14	JCPT0807-131011	Bridge	3	
15	JCPT0807-503100	Cylinder	1	
16	JCPT0807-131004	Cylinder axle	2	
17	JCPT0807-131007	Axle 2	2	
18	890-10060	Axle 3	2	
19	JCPT0807-131005	Axle 4	2	
20	JCPT0807-131200	Inner arm 1	1	
21	JCPT0807-131100	Outer arm1	1	
22	JCPT0807-131300	Outer arm2	2	
23	JCPT0807-131400	Inner arm2	1	
24	JCPT0807-131500	Inner arm3	1	
25	JCPT0807-131700	Inner arm4	1	
26	JCPT0807-131600	Outer arm 4	1	
27	JCPT1212HD-530111	Cover	1	
28	DPH-0607B-10	Valve	1	
29	GB/T 70.1-2000	Screw M6×10	2	
30	GB/T 97.1-2002	Washer 10	2	
31	GB/T 93-1987	Washer 10	2	
32	GB/T 5783-2000	Bolt M10×25	2	
33	JCPT0807-110022L	Sensor Cover		
34		Sensor		
35		Screw M5×10		

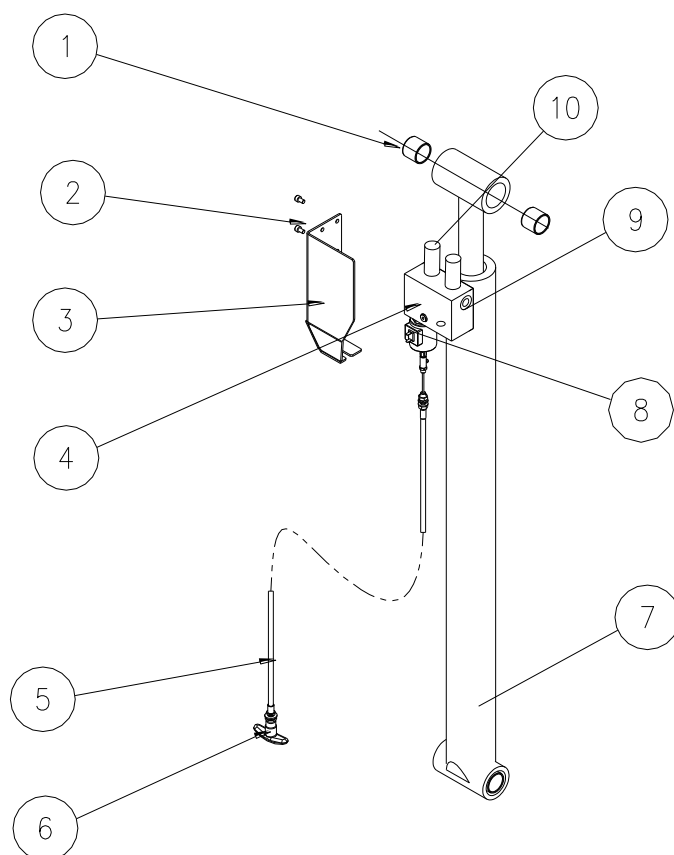
3 Platform



No.	Parts No	Description	Qty.	Remark
1	GB/T 5782-2000	Bolt M10x45	1	
2	GB/T 5782-2000	Bolt M6x45	8	
3	TYHY6957-8020	Hinge 31	2	
4	GB/T 6182-2000	Nut M6	20	
5	JCPT0807-41100	Singe Deck Extension	1	
6		Switch	1	
7	GB/T 818-2000	Bolt M5x12-H	4	
8	JCPT1212HD-41004	Slippage Of Block	4	
9	GB/T 5780-2000	Bolt M10x100	2	
10	GB/T 70.1-2000	Bolt M4x25	4	
11	JCPT1212HD-41002	Fastener	2	
12	JCPT1212HD-41005	Board, Harness	1	
13	JCPT1212HD-41018	Trolley	2	
14	JCPT1212HD-41030	Trolley seat	4	
15	GB/T 97.1-2002	Washer 8	22	
16	GB/T 93-1987	Washer 8	14	
17	GB/T 5780-2000	Bolt M8x45	16	
18	JCPT1212HD-41930	Bracket	1	
19	JCPT1212HD-41923	Pin	1	
20	GB / T5780-2000	Bolt M10x45	1	
21	JCPT1212HD-41921	Spring	1	
22	JCPT1212HD-41922	Columella	1	
23	JCPT1212HD-41910	Stance	1	
24	JCPT1212HD-41017	Trolley 2	2	
25	GB 893.1-86	Ring 47	4	
26	GB/T 6182-2000	Nut M10	23	
27	GB/T 97.1-2002	Washer 10	23	
28	GB/T 5782-2000	Bolt M10x50	20	
29	JCPT0807-41340	Rail, End Extension	1	
30	JCPT1212HD-41001	Lanyard 6x45	4	
31	JCPT0807-41320	Rail, Side Extension (Right)	1	
32	JCPT0807-41350	Rail, Side Extension (Left)	1	
33	JCPT0807-41330	Rail, Side Extension (Low)	1	
34	GB/T 5782-2000	Bolt M6x50	12	
35	GB/T 97.1-2002	Washer 6	20	

No.	Parts No	Description	Qty.	Remark
36	JCPT0807-41200	Deck, Extension	1	
37	JCPT0807-41310	Rail, Side Extension (Low)	1	
38	JCPT0807-41420	Rail, Side Options(Right)	1	
39	JCPT0807-41206	Slippage Of Crutch	2	
40	GB/T 70.3-2000	Bolt M5×12	8	
41	GB/T 5783-2000	Bolt M8×16	2	
42	JCPT0807-41410	Rail, Side Options(High)	1	
43	JCPT0807-41810	Rail, Side Options(High)	1	
44	JCPT0807-41700	Rail, End Options	1	
45	JCPT0807-41820	Rail, Side Options(Left)	1	
46		Handbook, Box	1	
47	GB/T 70.2-2000	Bolt M5×20	4	
48	JCPT0630-41030	Hold of console	1	
49	AMWP106-44400A	controller	1	
50	JCPT0807-41610	Door	1	
51	JCPT5007MQ-44401B	Doorknob	1	

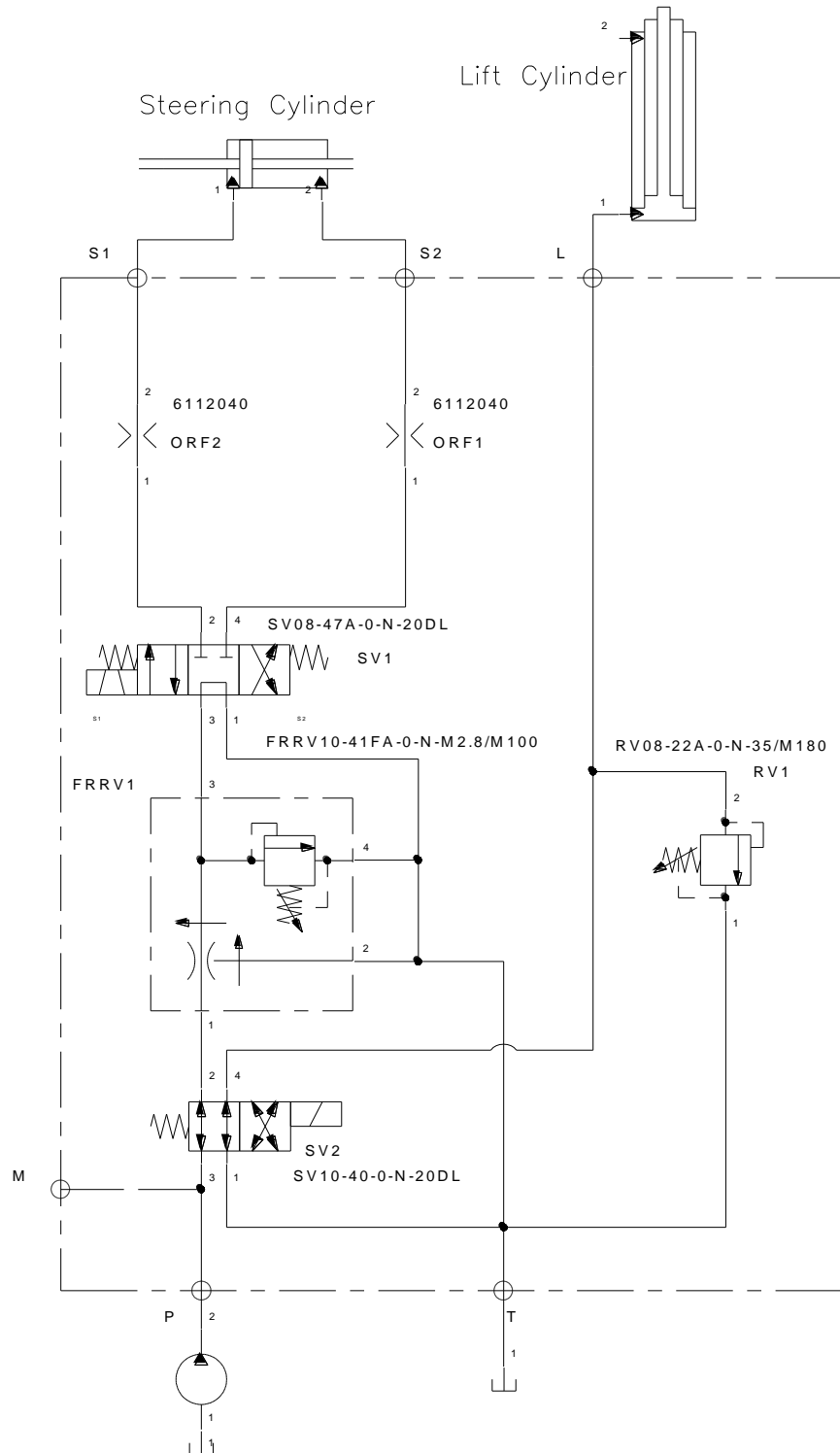
4 Hydraulic Cylinder



NO.	Parts NO.	Description	Qty.	Remark
1	SF-3236-30	Bearing	4	
2	GB/T 70.1-2000	Screw M6x10	2	
3	JCPT1212HD-530111	Cover	1	
4		Valve Manifolds	1	Welding
5		Wire	1	
6		Lowering Knob	1	
7	JCPT1212HD-503100	Lift Cylinder	1	
8	SV38-20J	Lowering Valve	1	
9	CV08-20-0-N-4	Throttle Valve	1	
10		Pressure Sensor	2	

5 Schematic

Hydraulic Schematic



Electrical Schematic

