

Dingli
Australia

www.dingliaustralia.com.au



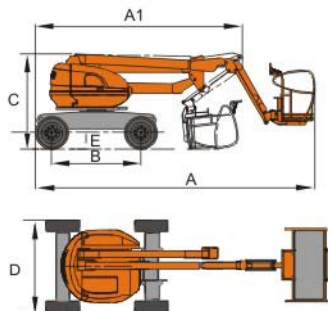
Apollo

BA16J-AWD

SELF-PROPELLED ARTICULATING BOOM LIFTS

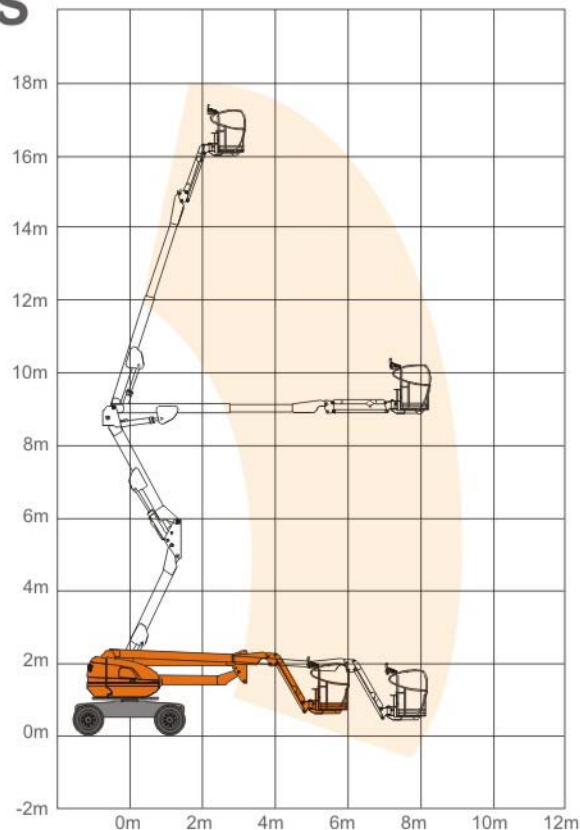
Apollo

BA16J-AWD



A	6.94m
A1	5.15m
B	2.20m
C	2.33m
D	2.30m
E	0.30m

	S.W.L	230kg/507lb
	Max.occupants	2
	Working height	18.00m/59ft1in
	Platform floor height	16.00m/52ft6in
	Max. horizontal reach	8.47m/27ft9in
	Turntable tailswing	0
	Up and over clearance	8.67m/28ft5in
	Overall length	7.49m/27ft7in
	Length (transport position)	5.70m/18ft8in
	Overall width	2.30m/7ft6in
	Overall height	2.33m/7ft10in
	Platform size	1.8m x 0.76m/6ft x 2ft6in
	Ground clearance	0.36m/11in
	Wheelbase	2.20m/7ft2in
	Turning radius Inside/Outside	2.21m/5.10m 7ft3in/16ft9in
	Turret rotation	Continuous
	Basket rotation	160°
	Jib movement	130° (+70° / -60°)
	Engine	
	Kubota V2403-M-DI	34kw/2400rpm
	Travel speed Stowed	6km/h
	Raised or extended	1.1 ≤ km/h
	Wind Rated	12.5m/s
	Gradeability	
	4 X 4	40%
	Maximum slope	5°
	Hydraulic tank	160L
	Diesel tank	75L
	Tyres	33x12-20
	Weight	8050kg/17747lb



Standard Equipment

- Can Bus Technology
- Proportional Controls
- Safety Electric Pump
- Horn
- Hour Meter
- Tilt Protection
- Tilt Alarm
- Continuous Turntable Rotation
- Self-levelling Platform
- Fault Indication On Platform
- Hydraulic Platform Rotation
- Anti-restart Engine Protection
- The Glow Plugs For Cold Starting
- Flashing Beacons
- 4WD
- European III Emission Engine
- Deadman
- Solid Tyres 33x12-20
- 5kva Hydraulic Generator
- Hydraulic Oil Cooler
- AC Power To The Platform
- Oscillating Axle
- Overload Sensor

Options

- 9kva Hydraulic Generator
- Hydraulic Welder
- Hydraulic Compressor
- Hydraulic Water Pump
- Platform Work Lights

Please Note:-

All information contained in this publication was correct at time of printing but may be subject to change without notice.

