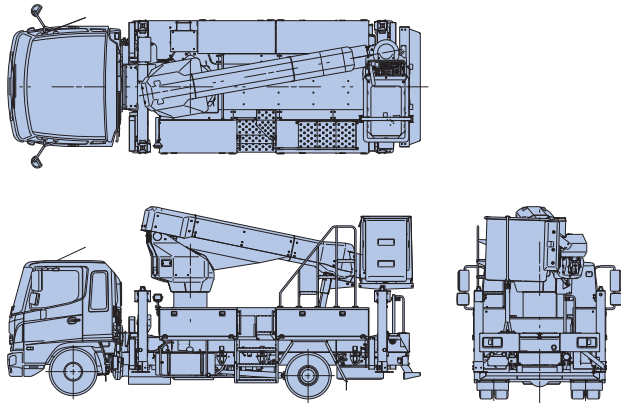


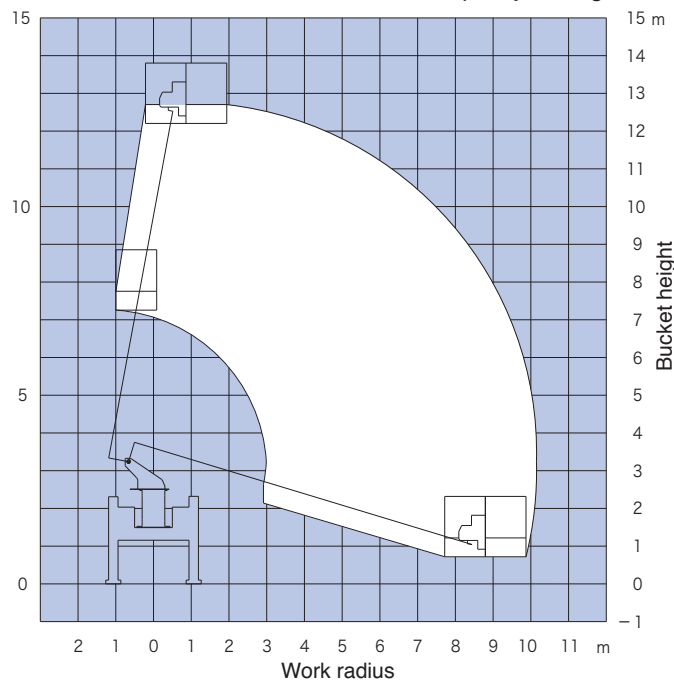


Dimensions



Working Range

Bucket load capacity 250kg



The work range remains the same all around.
The figures in the working range does not take bend of boom into account.

AICHI CORPORATION

OVERSEAS MARKETING & SALES DEPT.
1152 RYOKE AGEO-SHI SAITAMA 362-8550 JAPAN
<http://www.aichi-corp.jp>

DISTRIBUTORS

Major Specifications

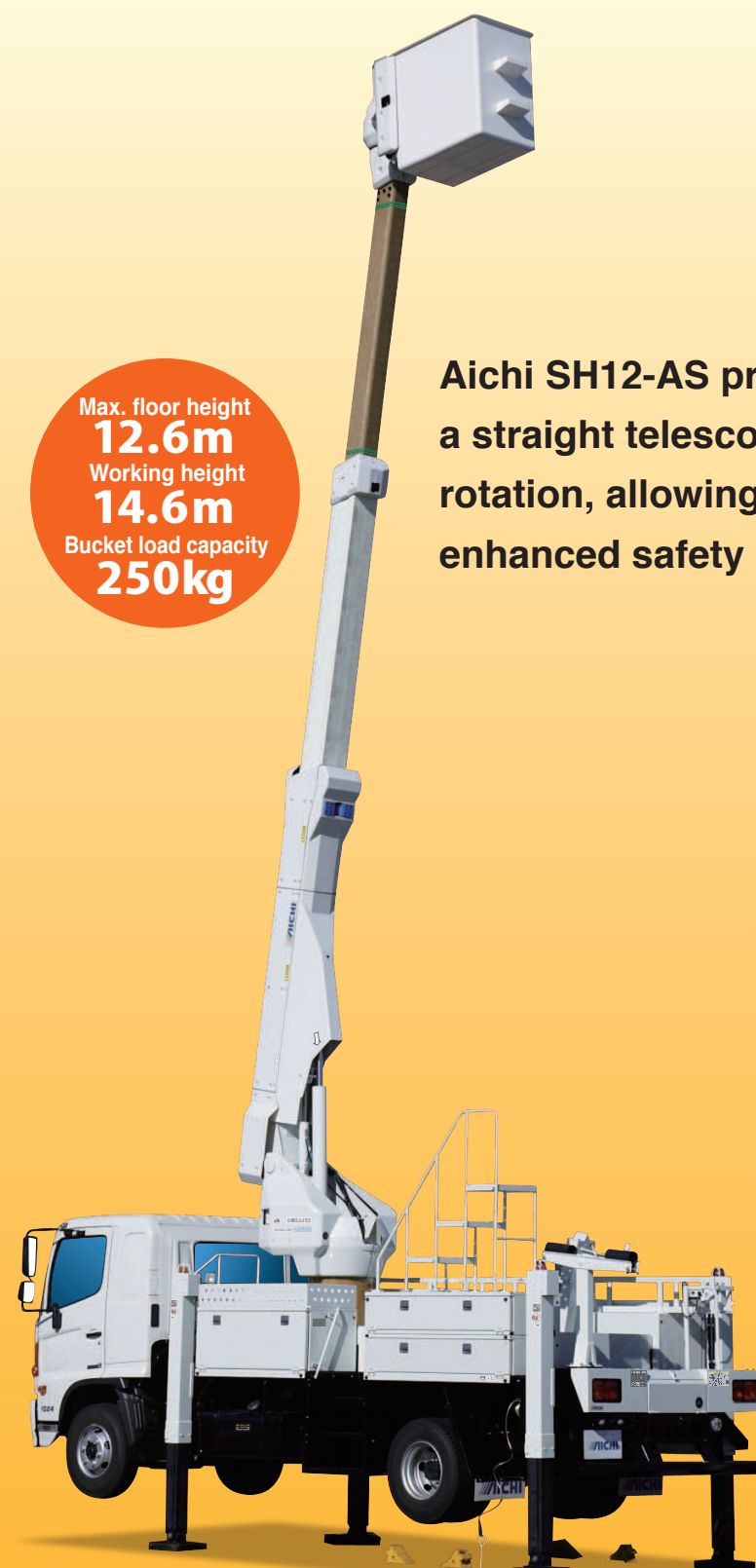
| | |
|--|--|
| ●Standard | |
| Standard | AS1418.10-2011 JIS |
| ●Model, Design Code and Model Type | |
| Model | SH12-AS |
| Design Code | SH12JRN |
| Model Type | EWP |
| ●Insulation Rating | |
| Insulation Category | C |
| 1st Boom | 5kV |
| 2nd Boom | 5kV |
| 3rd Boom | 33kV |
| Chassis | 33kV |
| Bucket | 33kV(with liner) |
| ●Bucket | |
| Load Capacity | 250kg or 2 persons |
| Max.Bucket Floor Height | 12.6m(including bucket slide by 0.5m) |
| Max.Work Radius | 10.0m(full boom) |
| Material | FRP(Fiber Reinforced Plastic) |
| Inner Dimensions | 0.73m×1.10m×1.10m(W×L×H) |
| Swing Angle | Left 100,Right 100 degrees |
| Sliding Stroke | 0.5m |
| ●Bucket Liner | |
| Material | Flame Retardant Polyethylene(Complied with ASTM D635-10) |
| Inner Dimensions | 0.68m×1.06m×1.10m(W×L×H) |
| ●Boom | |
| Material of 1st Boom | Steel(with FRP cover) |
| Material of 2nd Boom | Steel(with FRP coating) |
| Material of 3rd Boom | FRP(Fiber Reinforced Plastic) |
| Boom Length | 4.265m—9.275m |
| Extension Speed | 25 ± 5sec/str(out), 18 ± 5sec/str(in) |
| Boom Angle | -16.5°—81° |
| Elevation Speed | 35 ± 5sec/str(up), 30 ± 5sec/str(down) |
| Rotation Angle | 360 degrees(continuous) |
| Rotation Speed | 50 ± 10sec/rev |
| ●Outrigger Width | |
| | 2.21m |
| ●Safety Devices | |
| Hydraulic safety devices(Relief valve:one(1), Pilot check valves on jack cylinders:four(4), Holding valves on Elevation and Extension cylinders:two(2), Bucket leveling system), Emergency Stop Switch, Pre-operation check switch, Anchor for safety harness, Jack-boom interlock system, Interference prevention, User friendly joystick controller, Handrail, Bucket interlock warning system | |
| ●Other Devices | |
| Upper battery charging device, Automatic boom stowage system, Engine start and stop system, Auto accelerator, Level meter, Ground access, Upper hydraulic outlet | |
| ●Standard Accessories | |
| Jack bases:four(4), Wheel chocks:four(4), Bucket cover:one(1), Standard tool set:one(1) | |
| ●Mounting Chassis | |
| Mounting Chassis | 10.4 tonne GVW |

Due to continuous products improvements, we reserve the right to make specification and /or equipment changes without prior notice.

LIMITED WARRANTY

Aichi Corporation warrants the products to be manufactured in accordance with published specifications and free from defects in material and/or workmanship.
AICHI CORPORATION MAKES NO WARRANTIES EXPRESS OR IMPLIED, EXCEPT AS PROVIDED HEREIN, INCLUDING LIMITATION THEREOF, WARRANTIES AS TO MERCHANTABILITY, FOR A PARTICULAR PURPOSE.

**SKYMASTER
SH12-AS**



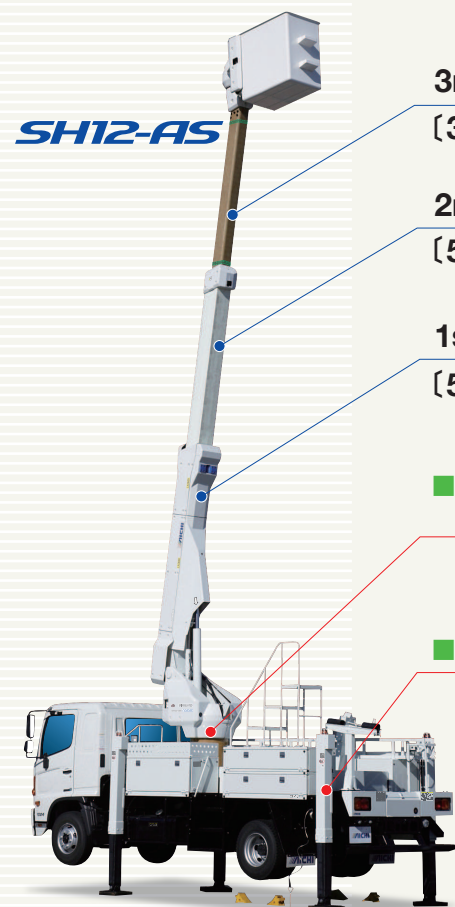
Max. floor height
12.6m
Working height
14.6m
Bucket load capacity
250kg

Aichi SH12-AS provides higher performance with a straight telescopic boom and 200 degrees bucket rotation, allowing for a wider work radius, with enhanced safety and maneuverability.

[CAUTION]
ALL PHOTOS:SH12-AS
OPTION DEVICES EQUIPPED,
STANDARD PAINTING COLOR

Aichi Corporation presents the culmination of 50 years of design and technological integration

Safety



SH12-AS

■ Boom structure [Withstand voltage]

3rd boom (FRP)
[33kV] ※FRP (Fiber-Reinforced Plastic)

2nd boom (with FRP coating)
[5kV]

1st boom (with FRP cover)
[5kV]

■ Chassis insulation (FRP) [33kV]



■ Stable H-form outrigger

■ Bucket and liner

Double insulation with bucket and fire retardant liner



■ User friendly joystick

SH12-AS is equipped with a proportional 3 function joystick, allowing 3 simultaneous movements by one hand while protecting against unintentional operation.



■ Handrails

Handrails are positioned for ease of entry to and from the bucket.

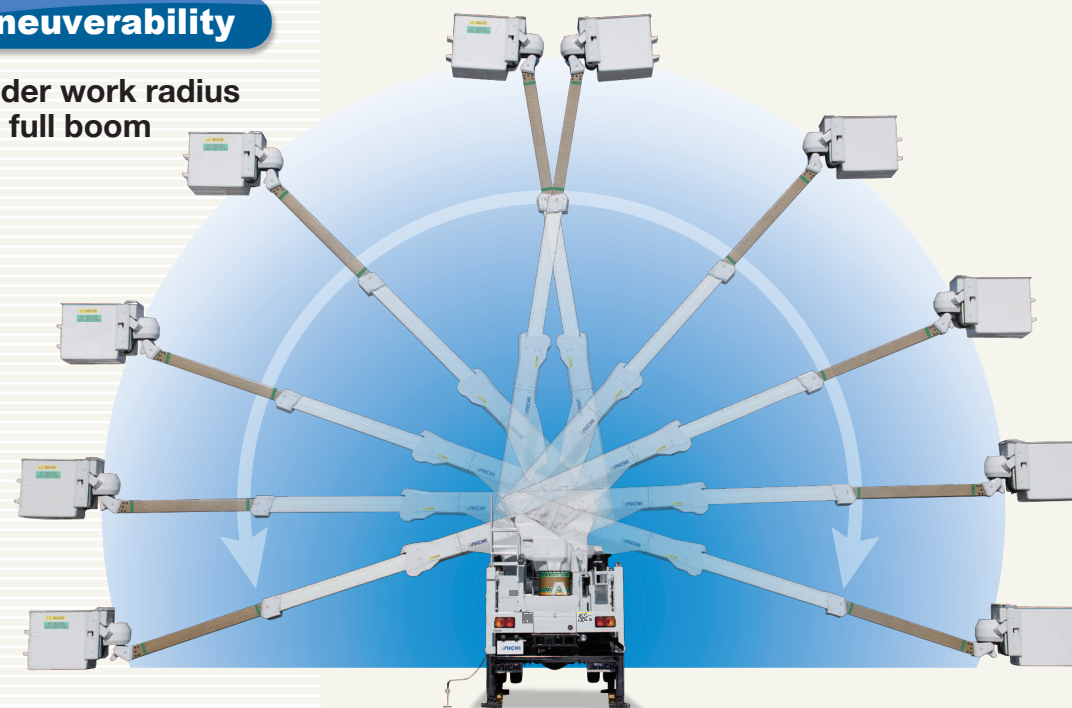


■ Interference prevention

When the boom approaches the cab or toolbox, it automatically stops to prevent accidental collision and damage.

Maneuverability

■ A wider work radius with full boom



● Hydraulic booster

Booster pressure of 68.6MPa to power cable crimping and cutting tools. (OPTION)



● HV control (OPTION)

SH12-AS is equipped with horizontal and vertical movement control. This permits the authorized operator to move the bucket in a vertical and horizontal direction at the same time with a single lever operation.

■ Bucket slide

Operation of a switch provides 500mm vertical movement for precise access without raising the boom.



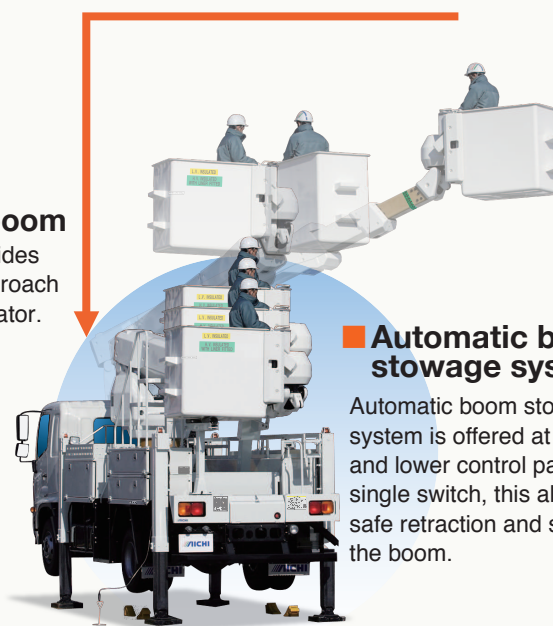
Usability



■ Straight telescopic boom

Straight boom provides quick and easy approach for authorized operator.

- 1 Elevation
- 2 Rotation
- 3 Extension



■ Automatic boom storage system

Automatic boom storage system is offered at both upper and lower control panels by a single switch, this allows for safe retraction and stowage of the boom.



■ Zero tail-swing

Boom end is inside of the vehicle width when rotating boom.

■ Ground Access

Authorized operator can enter the bucket from ground level by use of a switch at the lower control panel.



■ Toolbox

All toolboxes are fitted with adjustable shelves.

■ Engine start and stop system

Once the PTO is engaged, the engine can be started or stopped from both the ground and bucket.



■ Lower control panel

The centralized lower control panel at the rear of the truck features outrigger control and boom control.



■ Jacks setup from Bucket

Authorized operator can control the outriggers from the upper control panel eliminating the time required in setting up outriggers from the lower control panel.



● Options

- Marker lamps : four (4)
- HV control
- Upper panel light : one (1)
- Lower panel light : one (1)
- Lower hydraulic outlet : one (1)
- Hydraulic booster : one (1)
- Upper auxiliary battery : one (1)
- Liner protector
- Energy-saving engine start and stop system
- Parking brake interlock system
- Balloon switch : one (1)
- Hydraulic extension hose : one (1)
- Upper frame of toolbox
- Double deck toolbox
- Rear toolbox
- Drawers : two (2)
- Toolbox for hot sticks : one (1)
- Ladder bracket : one (1)
- Cable reel : one (1)
- Signage rack : one (1)