

IN ONE'S POCKET

SMALL COSMETIC CARE ALLIES, ALWAYS ON HAND

TECHNICAL SPECIFICATIONS



ve directo al grano come to the point

GEL FACIAL CORRECTOR DE IMPUREZAS
que, aplicado localmente, acelera el secado del grano, evitando su infección. Propiedades antibacterianas. Contiene ingredientes que normalizan la producción de grasa de la piel. Acción calmante de las rojezas. Solución infalible contra los incómodos granitos que a veces salen.

IMPURITIES CORRECTOR FACE GEL
which, locally applied, makes the spot dry faster, preventing infection. Antibacterial properties. Contains ingredients which normalise the production of skin grease. Calming action on redness. Sure solution to the nuisance of spots which sometimes appear.



vistete de seda dress in silk

CREMA FACIAL ENVOLVENTE DE CONFORT
que aporta un aspecto aterciopelado. Reconstruye la función barrera de la piel, creando una película protectora que reduce la pérdida de agua transepidérmica. Nutre y suaviza, combate las molestias de la piel. Ideal para una aplicación uniforme y duradera del maquillaje. Sentir infinitas caricias por todo el rostro.

ENVELOPING COMFORT FACE CREAM
giving a velvety appearance. Reconstructs the skin's barrier function, forming a protective film which reduces transepidermal water loss. Nourishes and softens, fighting skin discomfort. Ideal for even and long-lasting make-up application.



bésame mucho kiss me a lot

BÁLSAMO LABIAL REPARADOR E HIDRATANTE
en profundidad, que crea un efecto volumen. Labios más definidos, suaves, finos y carnosos desde la primera aplicación. Una textura nutritiva y reafirmante con componentes capaces de potenciar el volumen. Recupera el placer de sonreír.

HEALING AND DEEPLY MOISTURISING LIP BALM
with volume effect. Better defined, softer, more refined and fleshier lips from the first application. Nutritious and firming texture with components capable of boosting volume. Take pleasure in your smile again.



al rescate! to the rescue!

GEL FACIAL TENSOR
que ilumina al instante los rasgos faciales. Permite hacer frente a cualquier imprevisto, devolviendo inmediatamente al rostro apagado su apariencia más perfecta. Le llaman el "efecto cenicienta".

TIGHTENING FACE GEL
which brightens facial features instantly. Lets you be ready for any situation, immediately returning your most perfect appearance to a dull face. They call it the "cinderella effect".



limpio y claro clean and clear

ESPUMA FACIAL LIMPIADORA
que elimina cualquier rastro de maquillaje y otros residuos. Deja la piel limpia, flexible y fresca. Apta para todo tipo de pieles.

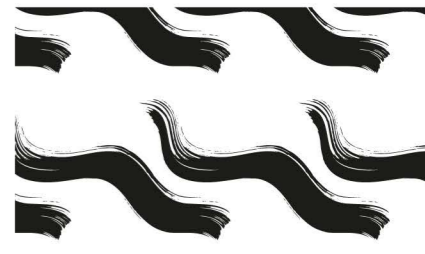
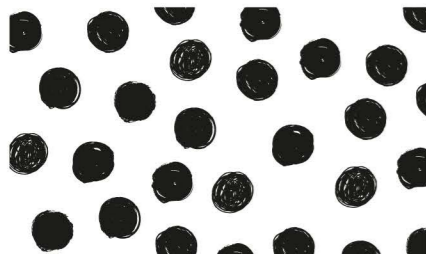
CLEANSING FACE MOUSSE
which removes all trace of make-up, impurities and other residues. Leaves the skin clean, fresh and flexible. Suitable for all skin types.



dulces sueños sweet dreams

MASCARILLA FACIAL REPARADORA
que durante la noche acelera la recuperación y repone el confort perdido por las pieles debilitadas y desvitalizadas. Textura mousse con alto poder revitalizante, regenerador, hidratante y nutritivo. Mejora el relieve de la piel, aportando firmeza y tonicidad. Elimina los signos visibles de fatiga.

REPAIRING FACE MASK that speeds night-time recovery and brings back comfort in weakened skins which have lost their vitality. Mousse texture with high revitalising, regenerating, moisturising and nourishing power. Improves the surface relief of the skin, bringing firmness and toning. Removes the visible signs of fatigue.



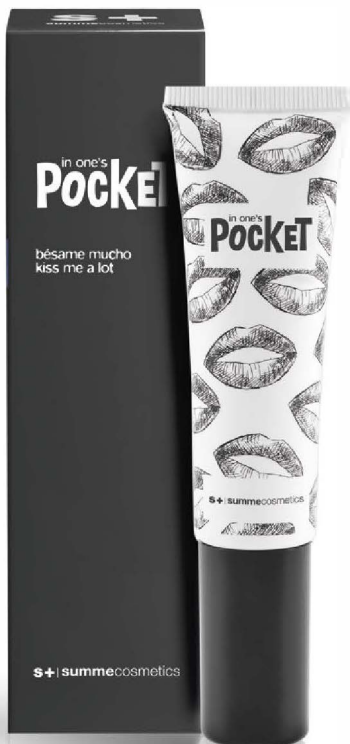
IN ONE'S POCKET
SMALL COSMETIC CARE
ALLIES, ALWAYS ON HAND

Essential beauty allies that are small but mighty, with instant results.

Perfect pocket-sized cosmetics that make modern life, problems and specific care needs easier... the quick answer for any time and place.

First aid that you have on hand.

"Softer, fuller, more defined lips."



30 ml / 1.01 fl.oz.

**IN ONE'S POCKET_KISS ME A LOT
LIP BALM**

Ref: 10401

DESCRIPTION

Deep hydrating and restoring lip balm which creates a plumping effect. Its nourishing active ingredients restore the soft appearance of the lips.

ACTIONS

- Hydrating.
- Nourishing.
- Plumping.
- Revitalising.

ACTIVE INGREDIENTS

LINEFILL™: Restores lost plumpness and minimises the appearance of dryness. Furthermore, it makes the lips look fuller and softer, achieving a more youthful appearance.

JOJOBA OIL (*Simmondsia Chinensis Seed Oil*): Contains Vitamin E and Linoleic Acid, which regenerate the skin cells, and Ceramides, which provide deep hydration and lipid balance to the skin.

CINNAMON LEAF ESSENTIAL OIL (*Cinnamomum Zeylanicum Leaf Oil*): Excellent circulatory system stimulant, induces increased blood flow in the lip area, leaving them fuller.

COMPOSITION

PARAFFINUM LIQUIDUM, HYDROGENATED STYRENE/BUTADIENE COPOLYMER, GLYCERIN, PARAFFIN, SIMMONDSIA CHINENSIS SEED OIL, CAPRYLIC/CAPRIC TRIGLYCERIDE, DIMETHYL ISOSORBIDE, JOJOBA ESTERS, SESAMUM INDICUM SEED EXTRACT, ACACIA DECURRENS FLOWER WAX, CITRIC ACID, DIMETHICONE, DIMETHICONOL, BUTYROSPERMUM PARKII BUTTER, HELIANTHUS ANNUUS SEED WAX, TOCOPHERYL ACETATE, PEG-40 HYDROGENATED CASTOR OIL, POLYGLYCERIN-3, BHT, PROPYL GALLATE, TOCOPHEROL, CINNAMOMUM ZEYLANICUM LEAF OIL.

DIRECTIONS FOR USE

Apply half a pump of the product, spreading it over the lips. Do not rinse.

"HOME CARE ROUTINE" FREQUENCY OF USE

Daily use.

IN ONE'S POCKET
SMALL COSMETIC CARE
ALLIES, ALWAYS ON HAND

Essential beauty allies that are small but mighty, with instant results.

Perfect pocket-sized cosmetics that make modern life, problems and specific care needs easier... the quick answer for any time and place.

First aid that you have on hand.

"Balanced skin, without excess sebum, free from unsightly spots and marks."



30 ml / 1.01 fl.oz.

**IN ONE'S POCKET_COME TO THE POINT
FACIAL CORRECTOR GEL**

Ref: 10402

DESCRIPTION

Blemish-correcting facial gel which, when applied topically, dries out spots quicker, preventing their inflammation. When applied generally, it normalises sebum production in the skin. Easily absorbed and shine-free on the skin's surface.

ACTIONS

- Sebum regulating.
- Controls the action of the *Propionibacterium Acnes* bacteria.
- Decongestive.
- Regenerating and clarifying.

ACTIVE INGREDIENTS

CYTOBIOL™ IRIS A2: Synergistic blend of three active ingredients which combat the functional and physical signs of acne. Purifies the skin and reduces shine and visible pores. Combats spots and imperfections. Helps to prevent outbreaks. Unique synergistic blend of: Iris Florentina Root Extract (astringent), Zinc Salt (sebum regulating) and Vitamin A (skin regenerating).

TEA TREE OIL (*Melaleuca Alternifolia Leaf Oil*): Proven balancing and purifying action.

CHLORHEXIDINE (*Chlorhexidine*): Disinfecting substance with a bactericide and fungicide action.

CAMPHOR (*Camphor*): Regulates excess sebaceous secretion.

COMPOSITION

AQUA, ALUMINUM STARCH OCTENYLSUCCINATE, ZINC SULFATE, DICAPRYLYL ETHER, PROPYLENE GLYCOL, ALCOHOL DENAT, GLYCERIN, IRIS FLORENTINA ROOT EXTRACT, CYCLOPENTASILOXANE, HYDROXYETHYL ACETATE/SODIUM ACRYLOYLDIMETHYL TAURATE COPOLYMER, RETINYL PALMITATE, CAMPHOR, CHLORHEXIDINE, CITRIC ACID, PROPANEDIOL, MELALEUCA ALTERNIFOLIA LEAF OIL, TOCOPHERYL ACETATE, TETRASODIUM GLUTAMATE DIACETATE, POLYACRYLATE CROSSPOLYMER-6, CAPRYLIC/CAPRIC TRIGLYCERIDE, PROPYL GALLATE, TOCOPHEROL, PHENOXYETHANOL, ETHYLHEXYLGLYCERIN.

DIRECTIONS FOR USE

OPTION A:
Apply a small amount directly onto the spot or blemish.

OPTION B:
Apply 3 pumps of product, spreading it over the face, neck and décolletage using a gentle massage, always in an upward motion, until completely absorbed.

"HOME CARE ROUTINE" FREQUENCY OF USE

Occasional or daily use.

TIP: Always carry it in your bag - you don't know when a spot might appear.

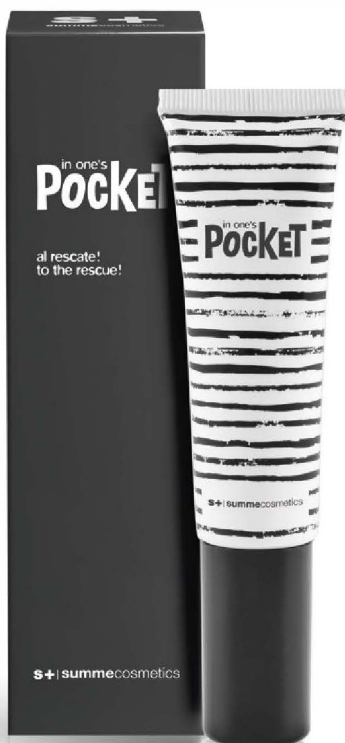
IN ONE'S POCKET
SMALL COSMETIC CARE
ALLIES, ALWAYS ON HAND

Essential beauty allies that are small but mighty, with instant results.

Perfect pocket-sized cosmetics that make modern life, problems and specific care needs easier... the quick answer for any time and place.

First aid that you have on hand.

"Instantly smooth skin that is full of light."



30 ml / 1.01 fl.oz.

IN ONE'S POCKET TO THE RESCUE!
OXYGENATING FACIAL GEL

Ref: 10403

DESCRIPTION

Firming facial gel which instantly lightens the facial features, immediately restoring a perfect appearance to dull skin. They call it the "Cinderella effect".

ACTIONS

- Regenerating.
- Clarifying / Lightening.
- Firming.

ACTIVE INGREDIENTS

BELIDES™: Its clarifying and lightening properties provide a smoother appearance to the skin, making pigmentation and dark spots less visible.

INSTENSYL®: Forms a viscoelastic film over the surface of the skin, providing immediate softening and elevating effects, emulating a lifting effect.

ORGANIC SILICON (Methylsilanol Mannuronate): Forms part of the natural structure of the skin's connective tissue. Acts like cement, ensuring that all the elements such as glycosaminoglycans (GAGs) or proteoglycans maintain their bonds with the extracellular matrix. Maintains the skin's mechanical properties, elasticity and firmness, preserving metabolic efficiency.

COMPOSITION

AQUA, METHYLSILANOL MANNURONATE, ACRYLATES/STEARETH-20 METHACRYLATE COPOLYMER, GLYCERIN, BELLIS PERENNIS FLOWER EXTRACT, HYDROLYZED MANIHOT ESCULENTA TUBER EXTRACT, AVENA SATIVA KERNEL EXTRACT, HYDROLYZED WHEAT FLOUR, CI 77019, CI 77891, SODIUM HYDROXIDE, PHENOXYETHANOL, ETHYLHEXYLGLYCERIN, PARFUM, BENZYL SALICYLATE, LINALOOL.

DIRECTIONS FOR USE

Apply 3 pumps of product, spreading it over the face, neck and décolletage using a gentle massage, always in an upward motion, until completely absorbed.

"HOME CARE ROUTINE" FREQUENCY OF USE

Daily use.

TIP: Apply before make-up to achieve a FLASH effect.

IN ONE'S POCKET
SMALL COSMETIC CARE
ALLIES, ALWAYS ON HAND

Essential beauty allies that are small but mighty, with instant results.

Perfect pocket-sized cosmetics that make modern life, problems and specific care needs easier... the quick answer for any time and place.

First aid that you have on hand.

"Hydrated skin with an even, shine-free appearance and a silky feel."



30 ml / 1.01 fl.oz.

**IN ONE'S POCKET_DRESS IN SILK
ENVELOPING FACIAL CREAM**

Ref: 10404

DESCRIPTION

Enveloping facial cream which provides a velvety appearance. Strengthens the barrier function, creating a protective film which reduces transepidermal water loss, maintaining the hydration and nourishment of balanced skin, leaving it with an even, shine-free appearance.

ACTIONS

- Hydrating.
- Nourishing.
- Clarifying / Lightening.

ACTIVE INGREDIENTS

BELIDES™: Its clarifying and lightening properties provide the skin with a more even appearance, making pigmentation and dark spots less visible.

JOJOBA OIL (*Simmondsia Chinensis Seed Oil*): Rich in antioxidants, acts by preventing ageing. Furthermore, it provides deep hydration and restructures the lipid balance.

MUSK ROSE OIL (*Rosa Moschata Oil*): Rich in essential oils, it preserves the skin's youthful reserves and its regenerating properties make it the perfect ally as an anti-ageing ingredient.

COMPOSITION

AQUA, CYCLOPENTASILOXANE, PEG/PPG-18/18 DIMETHICONE, DIMETHICONE, PARAFFINUM LIQUIDUM, GLYCERIN, SIMMONDSIA CHINENSIS SEED OIL, ALUMINUM STARCH OCTENYLSUCCINATE, BELLIS PERENNIS FLOWER EXTRACT, CITRIC ACID, DIMETHICONE/VINYL DIMETHICONE CROSSPOLYMER, ROSA MOSCHATA OIL, CAPRYLIC/CAPRIC TRIGLYERIDE, CETYL ALCOHOL, GLYCERYL STEARATE, PEG-75 STEARATE, STEARETH-20, CETETH-20, SILICA, TOCOPHERYL ACETATE, PROPYL GALLATE, TOCOPHEROL, TETRASODIUM GLUTAMATE DIACETATE, XANTHAN GUM, ACRYLATES/C10-30 ALKYL ACRYLATE CROSSPOLYMER, SODIUM HYDROXIDE, PHENOXYETHANOL, POTASSIUM SORBATE, SODIUM PHOSPHATE, ETHYLHEXYLGLYCERIN, PARFUM, BENZYL SALICYLATE, LINALOOL.

DIRECTIONS FOR USE

Apply 3 pumps of product, spreading it over the face, neck and décolletage using a gentle massage, always in an upward motion, until completely absorbed.

"HOME CARE ROUTINE" FREQUENCY OF USE

Daily use.

TIP: Ideal as a base for even and long-lasting make-up application.

IN ONE'S POCKET
SMALL COSMETIC CARE
ALLIES, ALWAYS ON HAND

Essential beauty allies that are small but mighty, with instant results.

Perfect pocket-sized cosmetics that make modern life, problems and specific care needs easier... the quick answer for any time and place.

First aid that you have on hand.

"Vitalised skin, free from apparent signs of fatigue."



30 ml / 1.01 fl.oz.

IN ONE'S POCKET_SWEET DREAMS RESTORING FACE MASK

Ref: 10405

DESCRIPTION

Overnight restoring face mask which speeds up skin recovery and replenishes lost comfort in weakened and devitalised skins. Improves the skin relief, providing firmness and tone. Corrects the visible signs of fatigue.

ACTIONS

- Hydrating.
- Nourishing.
- Regenerating.
- Revitalising.

ACTIVE INGREDIENTS

AVOCADO OIL (*Persea Gratissima Oil*): Due to its high Fatty Acid and Vitamin A, D and E content, it deeply nourishes, improves the barrier function, softens the epidermis and reduces flaking skin.

CHAMOMILE EXTRACT (*Chamomilla Recutita Extract*): Rich in flavonoids, it improves the soothing and decongestive action of the outermost skin layers.

PANTHENOL (*Panthenol*): Provitamin B5 plays an important role in the cell energy cycle, speeding up the skin regeneration and recovery process.

ALLANTOIN (*Allantoin*): Speeds up the natural skin regeneration process, facilitating the detachment of dead skin and preventing the accumulation of residue.

COMPOSITION

AQUA, PERSEA GRATISSIMA OIL, GLYCERIN, OLEA EUROPAEA FRUIT OIL, CAPRYLIC/CAPRIC TRIGLYCERIDE, CYCLOPENTASILOXANE, DICAPRYLYL ETHER, CETYL ALCOHOL, GLYCERYL STEARATE, PEG-75 STEARATE, BISABOLOL, CHAMOMILLA RECUTITA EXTRACT, ALLANTOIN, PANTHENOL, CITRIC ACID, CETETH-20, STEARETH-20, JOJOBA ESTERS, ACACIA DECURRENS FLOWER WAX, HELIANTHUS ANNUUS SEED WAX, POLYGLYCERIN-3, TOCOPHERYL ACETATE, TETRASODIUM GLUTAMATE DIACETATE, CARBOMER, XANTHAN GUM, LACTIC ACID, SODIUM HYDROXIDE, PROPYL GALLATE, TOCOPHEROL, PHENOXYETHANOL, ETHYLHEXYLGLYCERIN, PARFUM, HEXYL CINNAMAL, LINALOOL, COUMARIN, ALPHA-ISOMETHYL IONONE, CITRONELLOL.

DIRECTIONS FOR USE

Apply 3 pumps of the product over the face, neck and décolletage. Do not rinse.

"HOME CARE ROUTINE" FREQUENCY OF USE

Use 2 or 3 times a week.

TIP: Leave on overnight.

Use 2 or 3 times a week.

TIP: Leave on overnight.

RETAIL PRODUCT

IN ONE'S POCKET
SMALL COSMETIC CARE
ALLIES, ALWAYS ON HAND

Essential beauty allies that are small but mighty, with instant results.

Perfect pocket-sized cosmetics that make modern life, problems and specific care needs easier... the quick answer for any time and place.

First aid that you have on hand.

“Clean,
fresh skin.”



30 ml / 1.01 fl.oz.

IN ONE'S POCKET_CLEAN AND CLEAR
FACIAL CLEANSING FOAM

Ref: 10406

DESCRIPTION

Facial cleansing cream-gel which removes all traces of make-up, impurities or other residues. Leaves the skin clean, supple and fresh. Suitable for all skin types.

ACTIONS

- Cleansing.
- Make-up Removing.
- Purifying.

ACTIVE INGREDIENTS

SODIUM METHYL COCOYL TAURATE (*Sodium Methyl Cocoyl Taurate*): Alternative to sulphates, a non-irritant soap which respects the hydrolipid film.

MYRISTIC ACID (*Myristic Acid*): It received its name from nutmeg, with skin-lubricating properties.

GLYCERINE (*Glycerin*): Of plant origin, it captures more water molecules, improving skin hydration.

COMPOSITION

AQUA, SODIUM METHYL COCOYL TAURATE, DECYL GLUCOSIDE, MYRISTIC ACID, SORBITOL, GLYCERIN, STEARIC ACID, XANTHAN GUM, POTASSIUM HYDROXIDE, PHENOXYETHANOL, ETHLHEXYLGLYCERIN, PARFUM, BENZYL SALICYLATE, LINALOOL.

DIRECTIONS FOR USE

Apply 3 to 4 pumps of the product over the face, neck and décolletage. Wet the palms of the hands and work in the product. Rinse with water and dry.

TIP: Complement cleansing by applying the GLACIAR SOFT LOTION facial toner (for normal-dry skin) or BALANCING LOTION (for oily and/or acne-prone skin).

“HOME CARE ROUTINE” FREQUENCY OF USE

Occasional or daily use.

TIP: Ideal for travelling or for keeping in your gym locker.