

**SE; PDM; IN 2x2; OUT 2x24**

Item No.: 830-800/000-308



SE; PDM; IN 2x2; OUT 2x24

**Marking**RoHS ✓  
Compliant**Business data**

Supplier	WAGO
Item no.	830-800/000-308
GTIN / EAN	4055143379359
Content	1
Order amount	1
Customer item number	

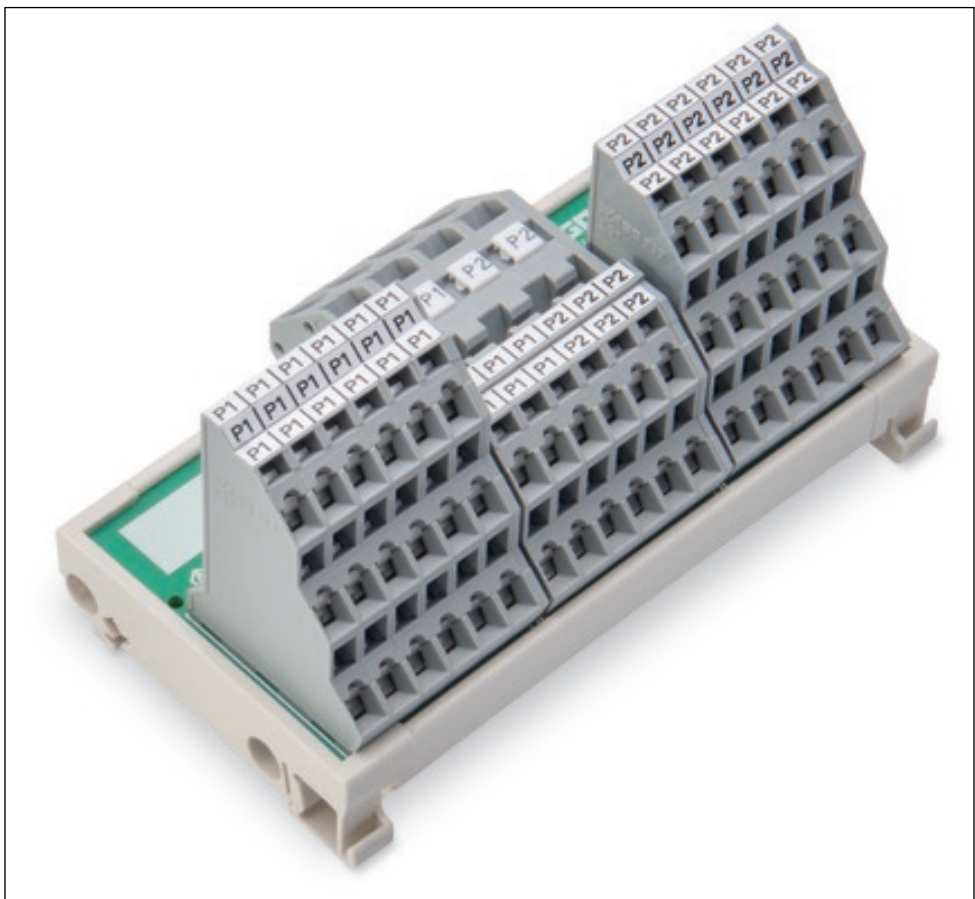
**Notes****Technical data****Miscellaneous**

Wire connection 1	WAGO 745 Series
Operating voltage	250 V AC/DC
Ambient operating temperature	-20 °C ... +50 °C
Max. current per connection [A]	10 [A]
Connection technology	CAGE CLAMP®
Solid sizes	0.2 ... 6 mm <sup>2</sup> / 24 ... 10 AWG
Strip length	11 ... 12 mm / 0.43 ... 0.47 in
Connection type 2	CAGE CLAMP®
solid, connectable 2	0.08 ... 2.5 mm <sup>2</sup> / 28 ... 12 AWG
Strip length 2	5 ... 6 mm / 0.2 ... 0.24 in

**Technical data**

Weight [g]	141 [g]
Width	102 mm / 4.02 in
Height from upper-edge of DIN-rail	38 mm / 1.47 in
Length	55 mm / 2.17 in
Relative air humidity (no condensation) [%]	95 [%]
Standards/specifications	cULus 61010-2-201
Type of mounting	DIN-35 rail
Mounting type	DIN-rail mount (EN 60715)

**Images & drawings**



**Address**

WAGO Kontakttechnik GmbH & Co. KG

Hansastr. 27

32423 Minden

Telefon: 0571/887-0

Fax: 0571/887-169

<http://www.wago.com>

© WAGO Kontakttechnik GmbH & Co. KG

Technische Änderungen und Irrtümer vorbehalten.