

**SE; PDM; IN 1x1; OUT 1x6**

Item No.: 830-800/000-302



SE; PDM; IN 1x1; OUT 1x6

**Marking**RoHS ✓  
Compliant**Business data**

Supplier	WAGO
Item no.	830-800/000-302
GTIN / EAN	4055143375993
Content	1
Order amount	1
Customer item number	

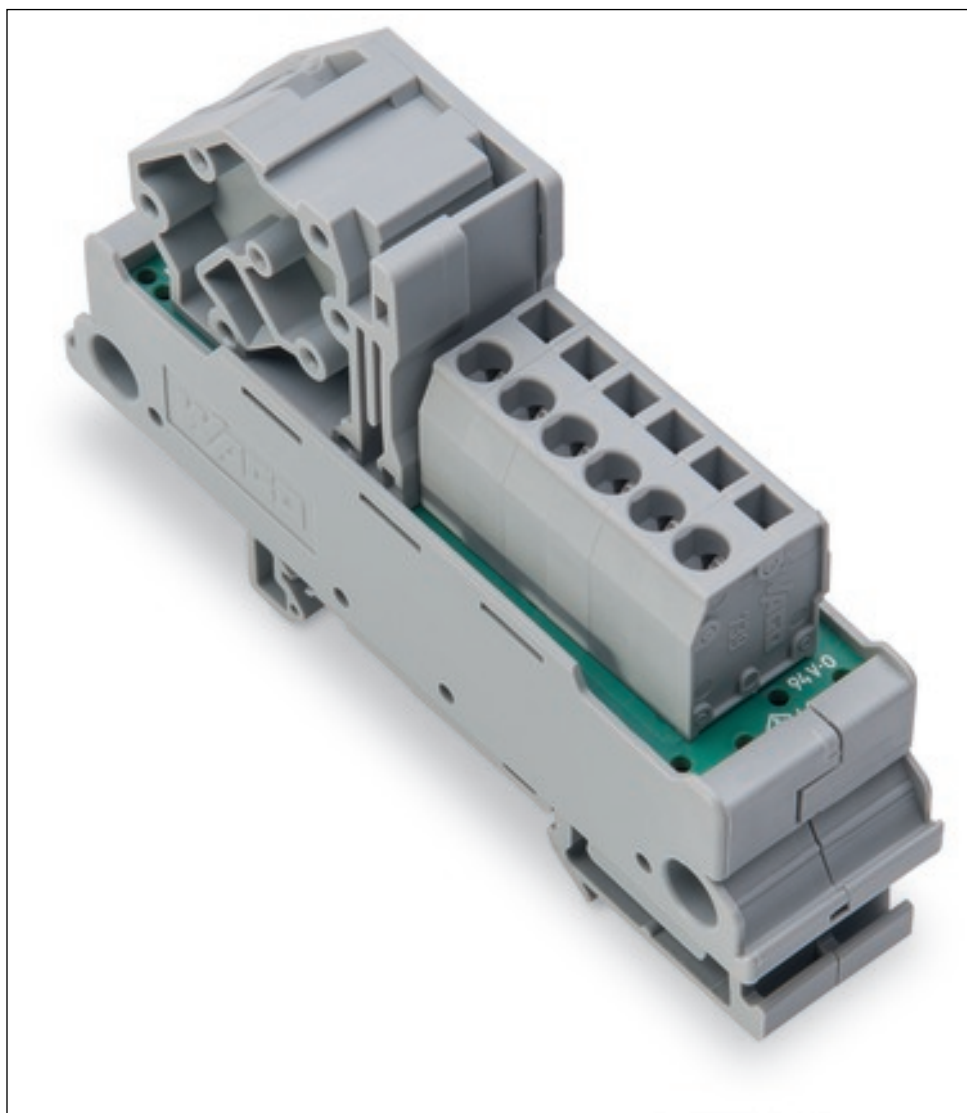
**Notes****Technical data****Miscellaneous**

Wire connection 1	WAGO 745 Series
Operating voltage	250 V AC/DC
Ambient operating temperature	-20 °C ... +50 °C
Max. current per connection [A]	12 [A]
Connection technology	CAGE CLAMP®
Solid sizes	0.2 ... 16 mm <sup>2</sup> / 24 ... 6 AWG
Strip length	11 ... 12 mm / 0.43 ... 0.47 in
Connection type 2	CAGE CLAMP®
solid, connectable 2	0.08 ... 2.5 mm <sup>2</sup> / 28 ... 12 AWG
Strip length 2	8 ... 9 mm / 0.31 ... 0.35 in

**Technical data**

<i>Weight [g]</i>	<i>51 [g]</i>
<i>Width</i>	<i>21 mm / 0.81 in</i>
<i>Height from upper-edge of DIN-rail</i>	<i>49 mm / 1.98 in</i>
<i>Length</i>	<i>85 mm / 3.35 in</i>
<i>Relative air humidity (no condensation) [%]</i>	<i>95 [%]</i>
<i>Standards/specifications</i>	<i>cULus 61010-2-201</i>
<i>Type of mounting</i>	<i>DIN-35 rail</i>
<i>Mounting type</i>	<i>DIN-rail mount (EN 60715)</i>

**Images & drawings**



**Address**

WAGO Kontakttechnik GmbH & Co. KG

Hansastr. 27

32423 Minden

Telefon: 0571/887-0

Fax: 0571/887-169

<http://www.wago.com>

© WAGO Kontakttechnik GmbH & Co. KG

Technische Änderungen und Irrtümer vorbehalten.