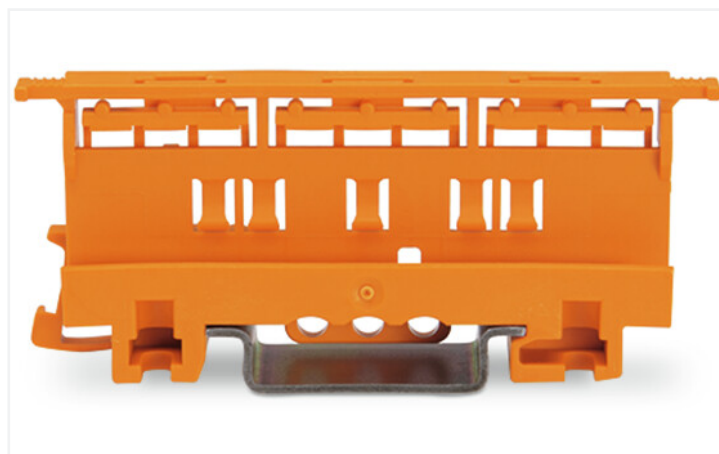
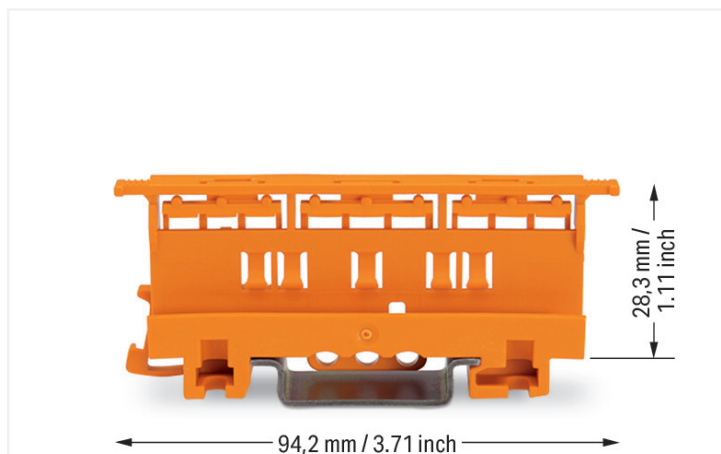


## Data Sheet | Item Number: 221-510

Mounting carrier; 221 Series - 6 mm<sup>2</sup>; for DIN-35 rail mounting/screw mounting;  
orange

<https://www.wago.com/221-510>



Color: ■ orange

### Physical data

Width	19.3 mm / 0.76 inches
Height	94.2 mm / 3.709 inches
Depth from upper-edge of DIN-rail	28.3 mm / 1.114 inches

### Mechanical Data

Mounting type	DIN-35 rail Screw mount
Suitable	for 2-, 3- and 5-conductor 221 Series Splicing Connectors (6 mm <sup>2</sup> )

### Material Data

Note (material data)	<a href="#">Information on material specifications can be found here</a>
Color	orange
Material group	I
Insulation material	Polyamide (PA66)
Flammability class per UL94	V0
Fire load	0 MJ
Weight	11.9 g

### Commercial data

eCl@ss 10.0	27-14-11-92
eCl@ss 9.0	27-14-11-92
ETIM 8.0	EC002848
ETIM 7.0	EC002848
PU (SPU)	50 (10) pcs
Packaging type	Box
Country of origin	CN
GTIN	4055143736695
Customs tariff number	39269097900

## Downloads

### Environmental Product Compliance

#### Compliance Search

Environmental Product Compliance 221-510



## Documentation

### Bid Text

221-510	19.02.2019	xml 2.66 KB	
221-510	23.01.2019	docx 14.58 KB	
ausschreiben.de 221-510			

## CAD/CAE-Data

### CAD data

2D/3D Models 221-510



### CAE data

EPLAN Data Portal  
221-510



ZUKEN Portal 221-510



## 1 Compatible Products

### 1.1 Optional Accessories

#### 1.1.1 Marking

##### 1.1.1.1 Marking strip



#### Item No.: 210-833

Marking strips; 25 m on roll; 6 mm wide;  
plain; Self-adhesive; white

### 1.1.2 Mounting adapter

1.1.2.1 Mounting accessories



**Item No.: 222-510**

Angled DIN-rail adapter; in combination with mounting carrier; 221-500 or 222-500; for DIN-35 rail mounting; gray

**Item No.: 222-505**

Strain relief plate; for mounting carrier; 221 or 222 Series, can be snapped

Installation Notes

Conductor termination



CAGE CLAMP® connection:  
Conductor termination with connectors fitted in a mounting carrier



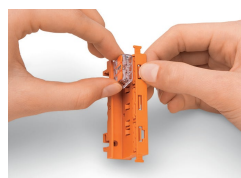
Removing a conductor.



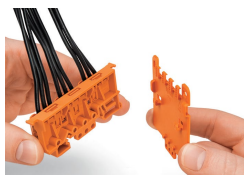
Inserting a connector into the mounting carrier.



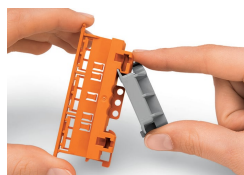
Inserting a connector into the mounting carrier.



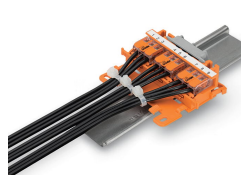
Removing a connector from the mounting carrier.



Securing a strain relief plate (222-505) to the mounting carrier.



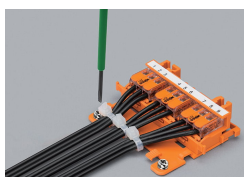
Snapping the angled DIN-rail adapter (222-510) onto the mounting carrier.



Horizontal mounting on DIN-35 rail using an angled DIN-rail adapter



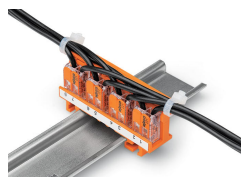
Horizontal mounting on DIN-35 rail using an angled DIN-rail adapter



Horizontal screw mounting with strain relief plate on a flat surface



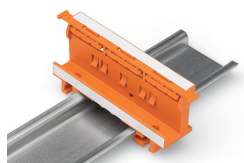
Vertical mounting with strain relief plate on DIN-35 rail



Strain relief via cable ties on the mounting carrier (transverse to the connectors' wiring direction) – clamping units labeled via marking strips (210-334)



Vertical screw mounting with strain relief plate on a flat surface



Mounting carrier on a DIN-35 rail

Testing



Testing connectors via test slots on top of the carrier.