

# 3" (76mm) HEAVY DUTY BOLTED STYLE PUMP



## 3" (76mm) HEAVY DUTY BOLTED STYLE PUMP

Engineered for maximum fluid and chemical compatibility. Heavy duty, stall free, non-metallic air section ensures stall free and freeze free operation. Rugged valve system allows operation under a variety of conditions, ranging from clean fluids to slurries, to solids applications. Bolted design provides ease of maintenance and leak free operation.

- Suitable for Clean Fluids, Slurries or up to 7/16" Solids
- Heavy Duty Air Valve
- Aluminum Chamber
- Muffler Included

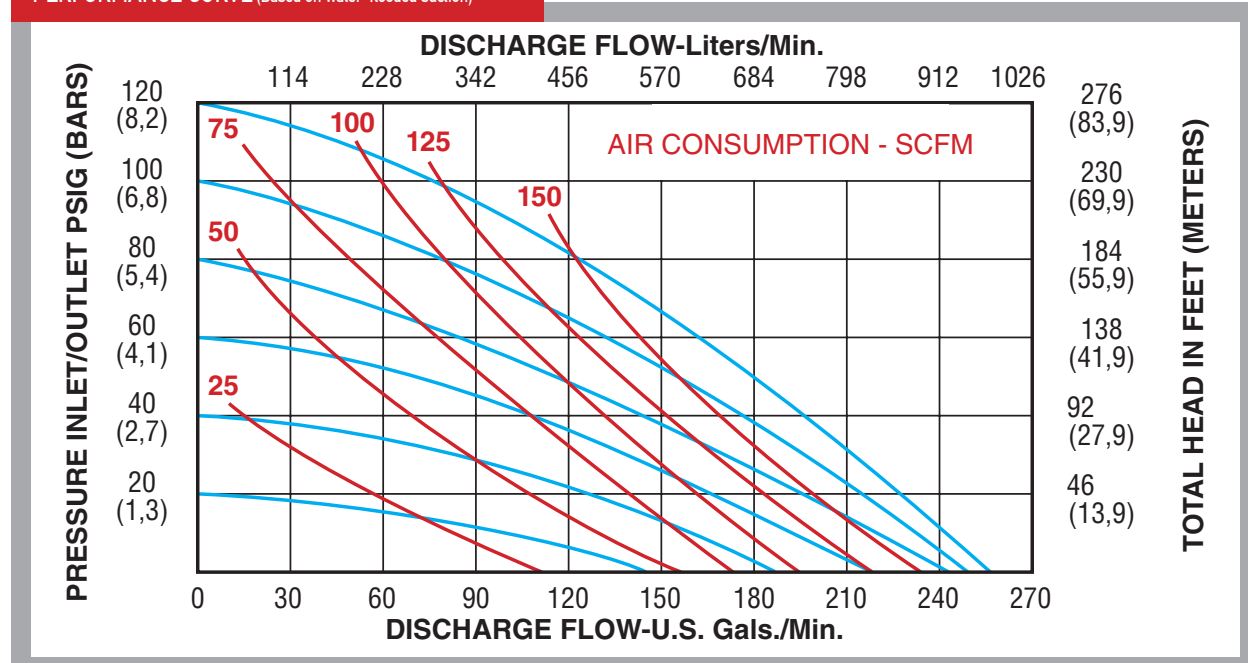
\*Carrying handles available (sold separately)

## SPECIFICATIONS

| Dimension                      |                     |
|--------------------------------|---------------------|
| Physical Dimensions            | See Drawing Page 79 |
| Air Inlet                      | 3/4"                |
| Liquid Inlet                   | 3" (76 mm)          |
| Liquid Outlet                  | 3" (76 mm)          |
| Weight                         | see product tables  |
| Performance                    |                     |
| Maximum Flow                   | 255 gpm (681 lpm)   |
| Maximum Air Pressure           | 120 psi (8.2 bar)   |
| Maximum Solids                 | 7/16" (11.1 mm)     |
| Max Suction Lift Dry           | 15 ft (4.5 m)       |
| Max Suction Lift Wet           | 26 ft (7.9 m)       |
| Max Suction Lift Dry with PTFE | 10 ft (3 m)         |
| Max Temperature                | See Product Tables  |
| Noise Level (with muffler)     | 86 dBA              |



PERFORMANCE CURVE (Based on water-flooded suction)



**3" (76mm) - ALUMINUM** - General purpose pump, suitable for water, oils, most solvents, and most paints. Please consult chemical compatibility tables or [www.all-flo.com](http://www.all-flo.com) for your particular application.

| PART NUMBER | DIAPHRAGM MATERIAL | VALVE/BALL MATERIAL | VALVE SEAT MATERIAL | O-RING MATERIAL | FASTENER MATERIAL | WEIGHT LBS (KG) | MAX TEMPERATURE °F (°C) | DIMENSIONAL DIAGRAM | CONNECT TYPE |
|-------------|--------------------|---------------------|---------------------|-----------------|-------------------|-----------------|-------------------------|---------------------|--------------|
| AL-30T      | PTFE               | PTFE                | Nylon               | PTFE            | SS & PS           | 150 (68)        | 212 (100)               | Pg. 79              | NPT          |
| AL-30E      | Santoprene®        | Santoprene®         | EPDM                | N/A             | SS & PS           | 150 (68)        | 212 (100)               | Pg. 79              | NPT          |
| AN-30       | Nitrile            | Nitrile             | Nitrile             | N/A             | SS & PS           | 150 (68)        | 150 (66)                | Pg. 79              | NPT          |
| AL-30       | Urethane           | Geolast®            | Nitrile             | N/A             | SS & PS           | 150 (68)        | 150 (66)                | Pg. 79              | NPT          |
| AL-30V      | Viton®             | Viton®              | Viton®              | N/A             | SS & PS           | 150 (68)        | 212 (100)               | Pg. 79              | NPT          |
| AL-30V-P15  | Viton®             | Viton®              | Viton®              | N/A             | SS & PS           | 150 (68)        | 212 (100)               | Pg. 79              | BSP          |
| AL-30T-P15  | PTFE               | PTFE                | Nylon               | PTFE            | SS & PS           | 150 (68)        | 212 (100)               | Pg. 79              | BSP          |
| AL-30E-P15  | Santoprene®        | Santoprene®         | EPDM                | N/A             | SS & PS           | 150 (68)        | 212 (100)               | Pg. 79              | BSP          |
| AN-30-P15   | Nitrile            | Nitrile             | Nitrile             | N/A             | SS & PS           | 150 (68)        | 150 (66)                | Pg. 79              | BSP          |
| AL-30-P15   | Urethane           | Geolast®            | Nitrile             | N/A             | SS & PS           | 150 (68)        | 150 (66)                | Pg. 79              | BSP          |

**AVAILABLE OPTIONS** - Each pump can be configured to suit a particular application. Please see the options section for detailed product information on the following available options.

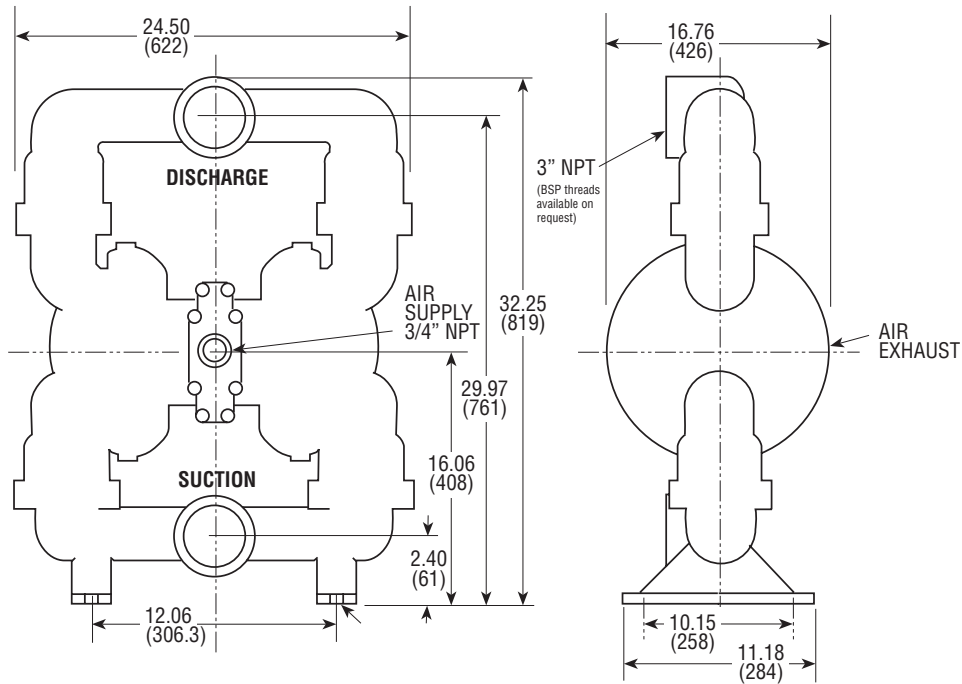
| AIR VALVE OPTIONS                    | SEE PAGE |
|--------------------------------------|----------|
| CYCLE COUNT VALVE                    | 67       |
| <b>BALL VALVE OPTIONS</b>            |          |
| PTFE                                 | 67       |
| SANTOPRENE®                          | 67       |
| NITRILE                              | 67       |
| EPDM                                 | 67       |
| HEAVY NITRILE                        | 67       |
| HEAVY SANTOPRENE®                    | 67       |
| <b>WETTED CHAMBER FINISH OPTIONS</b> |          |
| HARD COAT ANODIZING                  | 67       |
| <b>HARDWARE OPTIONS</b>              |          |
| PTFE COATED HARDWARE                 | 67       |
| HANDLES                              | 67       |
| <b>O-RINGS</b>                       |          |
| PTFE O-RINGS                         | 67       |
| NITRILE O-RINGS                      | 67       |
| EPDM O-RINGS                         | 67       |
| VITON® O-RINGS                       | 67       |
| <b>PORTING OPTIONS</b>               |          |
| BSP THREADS                          | 68       |
| DISCHARGE / AIR EXHAUST              | 68       |
| SUCTION / AIR EXHAUST                | 68       |

**AVAILABLE ACCESSORIES** - Please see the accessories section for detailed product information on the following available accessories.

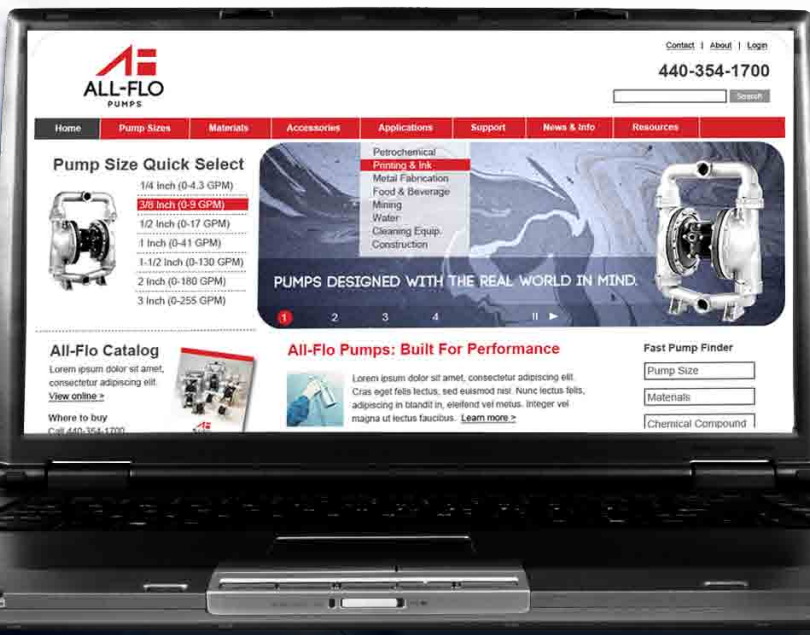
| AIR                     | SEE PAGE |
|-------------------------|----------|
| FILTER/REGULATOR/GAUGE  | 60       |
| SOLENOID VALVES         | 60       |
| AIR FLOW CONTROL VALVES | 60       |
| NEEDLE VALVE            | 60       |
| <b>PUMP</b>             |          |
| BASE                    | 63       |
| STRAINER BASE           | 63       |

### 3" BOLTED STYLE HEAVY DUTY PUMP

Dimensions in inches and (mm). Ports shown facing front for dimensional purposes.  
For detailed dimensional drawings, please visit [www.all-flo.com](http://www.all-flo.com)



# A PIPELINE TO THE PERFECT PUMP.



All the information you need to find the perfect pump is now right at your fingertips. Just log on to the new All-Flo website at [www.all-flo.com](http://www.all-flo.com) and find:

- Detailed Product Information
- Application Engineering
- Pump Sizing
- Chemical Compatibility Tables
- Repair Kit Information
- Detailed Drawings
- Manuals
- Application Support
- Trouble Shooting FAQs

VISIT [WWW.ALL-FLO.COM](http://WWW.ALL-FLO.COM)