

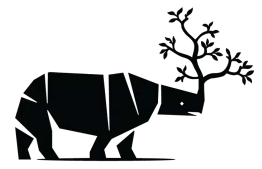
TO THE TRADE

2021



FROM THE SOURCE handcrafted
furniture

+1 212 255 2909
trade@ftsny.com
ftsny.com



FROM THE SOURCE handcrafted
furniture

TRADE PROGRAM

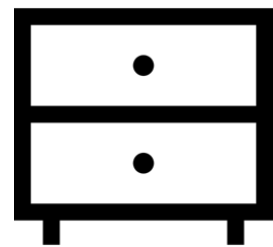
FROM THE SOURCE offers a robust trade program, featuring ready-to-go, built to order and fully custom products. We also provide options for full factory orders, including container shipments.

If you are interested in our trade program, please download our **Trade Account Application** and forward the completed document plus supporting documents to your FTS Account Manager or to trade@ftsny.com.





IN STOCK ORDERS



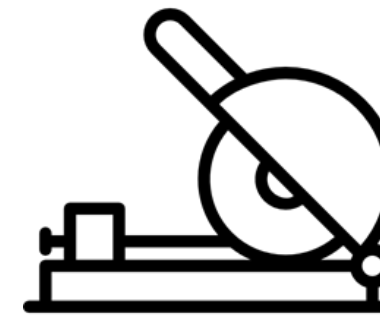
READY TO GO

- Large Quantities Ready to Go
- Seating
- Tops + Bases
- Casegoods



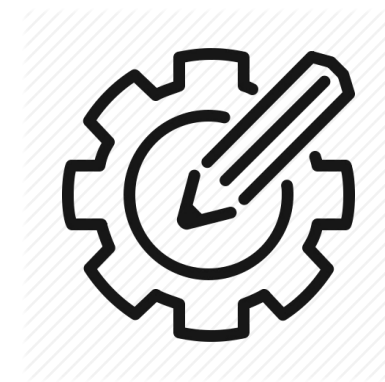
BUILT TO ORDER

- Component based furniture
- Allows for the mixing and matching of tops and bases
- 2 - 3 Week Lead Time



IN HOUSE CUSTOMIZATION

- Table Top Resizing + Joining
- Custom Finishes
- Wire / Power Management
- Short Lead Times



FACTORY ORDERS

- Extended Material, Finish and Design Options
- Designed to your specifications based on FTSNY Capabilities
- Lead times based on Size / Qty 12-20 Weeks
- Direct Container Options
- Competitive Pricing



FROM THE SOURCE handcrafted
furniture

DESIGN + MANUFACTURING

FROM THE SOURCE is a complete vertical venture in that we source, mill, dry and manufacture all of our own products at our factory in Indonesia using premium hardwoods sustainably sourced in partnership with the local community.

By having full control of our production process and through using low technology manufacturing, **FROM THE SOURCE** is able to produce unique, handcrafted items in small batch runs while maintaining the flexibility needed to produce larger scale projects.

From the hand selection of hardwood planks to the use of traditional sand casting techniques to create solid iron pieces, a very high level of craftsmanship is upheld and shines through in everything we produce. In addition to our product line, FROM THE SOURCE offers a wide array of design and manufacturing services.

Our furniture design services include modifications to our product line as well as development for fully custom designs. Our NYC facilities can be used for shorter lead time modifications and speciality finishes.





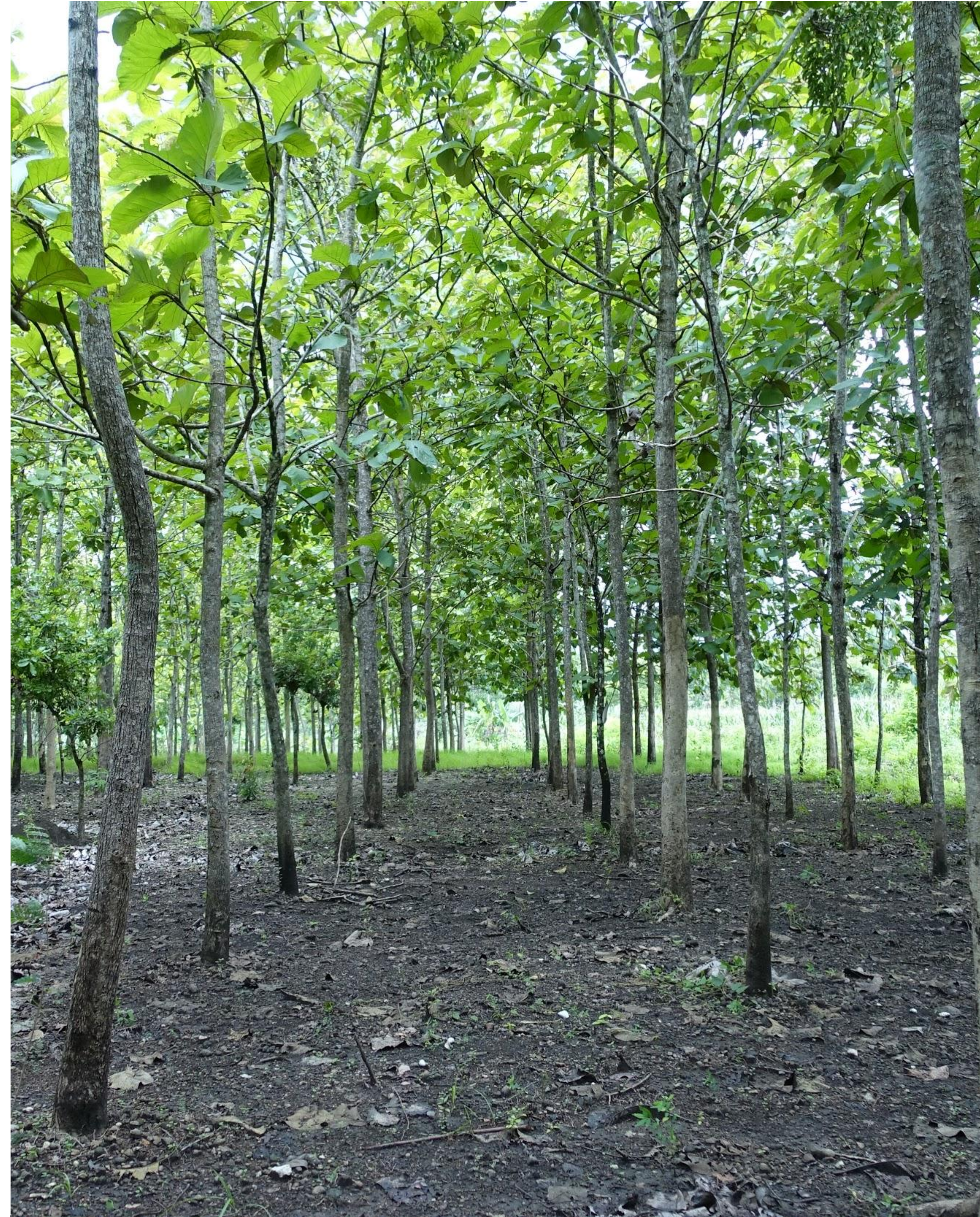
FROM THE SOURCE handcrafted
furniture

SUSTAINABLE PRACTICES

FROM THE SOURCE strongly believes in the social, ethical and environmental priorities of sustainable sourcing. We continue to seek out materials that can be repurposed, as well as those that have been sourced and managed responsibly.

The nature of our designs, the high quality of workmanship and the robust characteristics of the materials, support our goal of producing furniture that will last for decades. Our factory is SVLK Certified and we operate side by side with the Indonesian community to support, develop, and improve sustainability efforts in and around Indonesia.

We believe in the importance of working with the families and community members that have been practicing certain production methods, such as fine woodworking and tree farming techniques, for generations. These methods, combined with FSC training, has allowed us to improve the sustainability of our manufacturing practices.





Tectona grandis
Janka Hardness 1,070

TEAK

One of the most sought after tropical hardwoods, young, plantation grown teak shows differences between the pale blond sapwood and darker heartwood that can create a dramatic striped effect. Equally popular for indoor and outdoor use, Teak naturally produces oils and resins that help it resist the elements. When left outdoors, unfinished teak weathers to a beautiful, soft gray patina.



Mangifera indica
Janka Hardness 1,060

MANGO

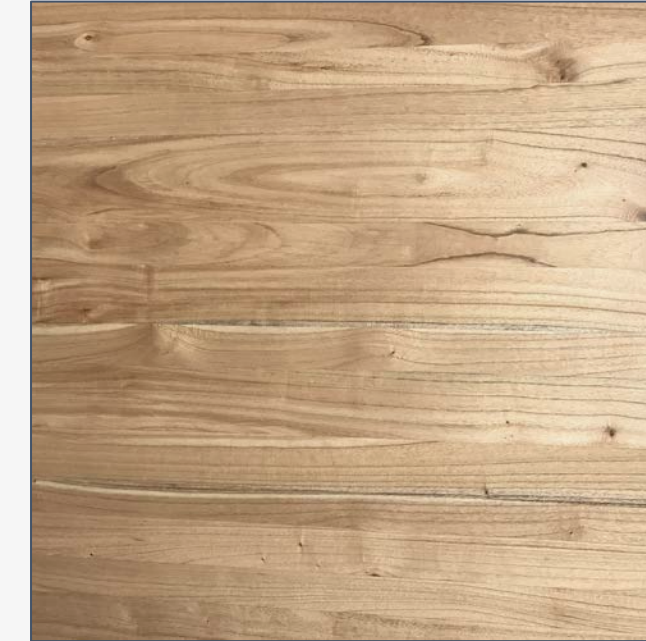
Mango trees, although not native to Indonesia, have been cultivated there for many years. Once the old mango trees no longer bear fruit they are culled to make way for younger trees and the harvested wood is used for furniture making. A medium density hardwood, Mango has a beautiful rich grain that can vary widely, from straight, subtle markings to flashes of pattern akin to tiger maple.



Erythrophleum suaveolens
Janka Hardness 2,920

TALI

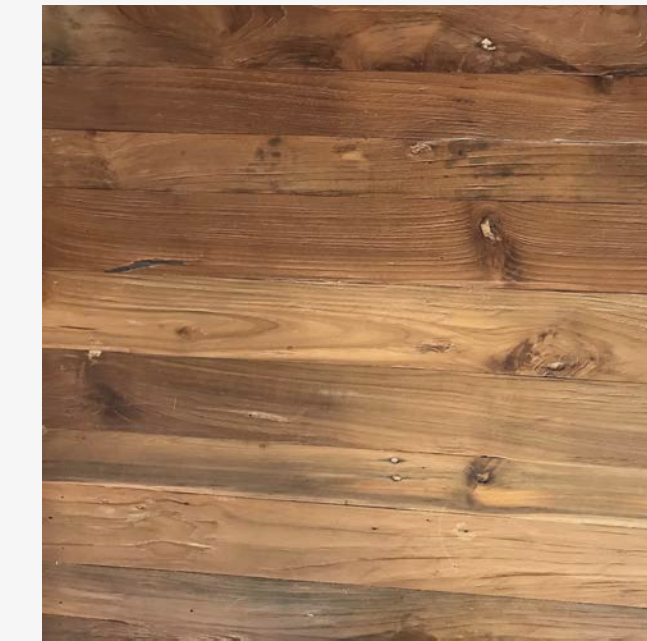
Tali, also known as North Indian Rosewood, has a rich, warm hue across the red and brown color spectrum. It has a very high density which makes it a very hard wood. The grain is typically tight, but may be irregular. Due to Tali's durability, it is commonly used for both indoor and outdoor furniture, and has excellent finishing qualities.



Melia azederach
Janka Hardness 1,055

MINDI

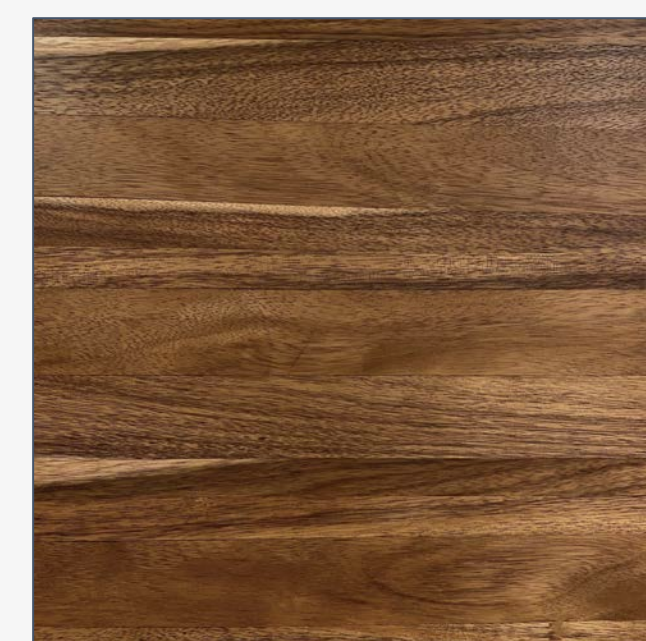
Originally from China's Himalayan region, Mindi remains smooth under friction and dries easily with little shrinking or warping resulting from the process. The sapwood of Mindi is yellowish-white in color, while the heartwood is reddish, becoming more reddish-brown after exposure. One of our softer wood options, this wood type can be special ordered for budget conscious projects.



Tectona grandis
Janka Hardness 1,070

RECLAIMED TEAK

Older Teak, including salvaged and reclaimed Teak, is typically more worn with less contrast which is accented by its uniform warm golden brown "classic Teak wood" color. A durable hardwood, Teak is equally valued for its handsome appearance as well its strength, stability, and resistance to wear.



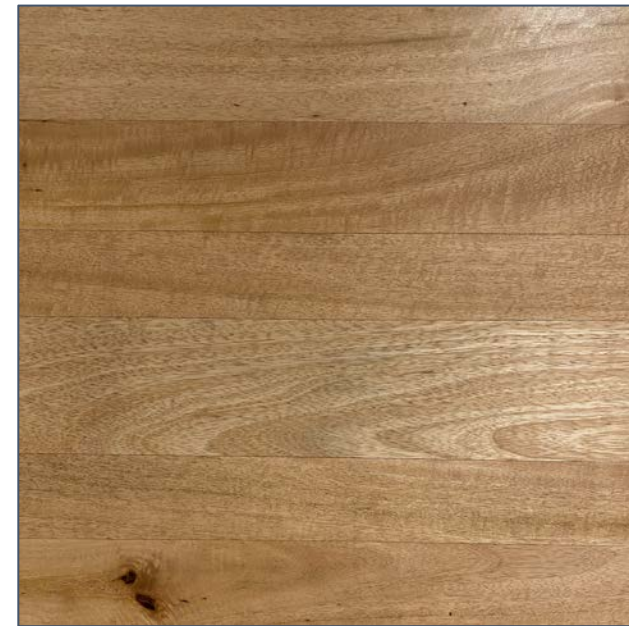
Albizia procera
Janka Hardness 1,020

WERU

Often found throughout Tropical Africa, Weru wood exhibits a pale brown to dark reddish-brown or golden-brown heartwood with a striking white to straw-colored sapwood. This moderately durable and termite resistant wood features a straight grain which is usually in an interlocked straight or wavy pattern. This wood is easy to work with and holds finishes exceptionally well.



TEAK / NATURAL
(TN)



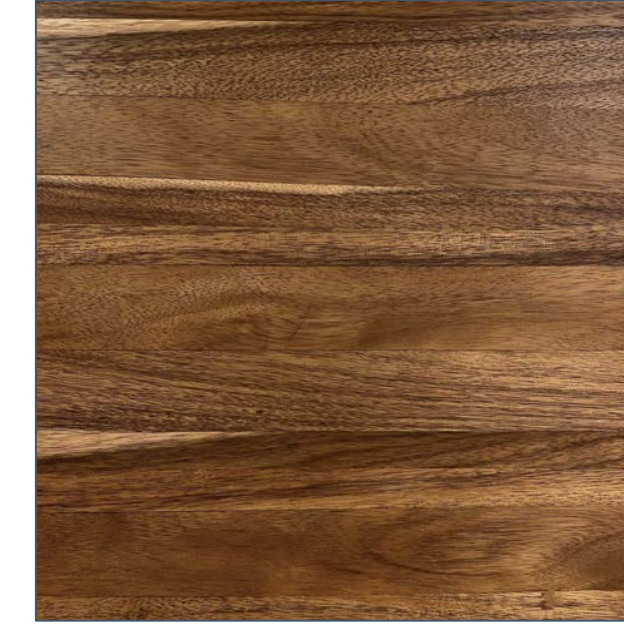
MANGO / NATURAL
(GN)



TALI / NATURAL
(LN)



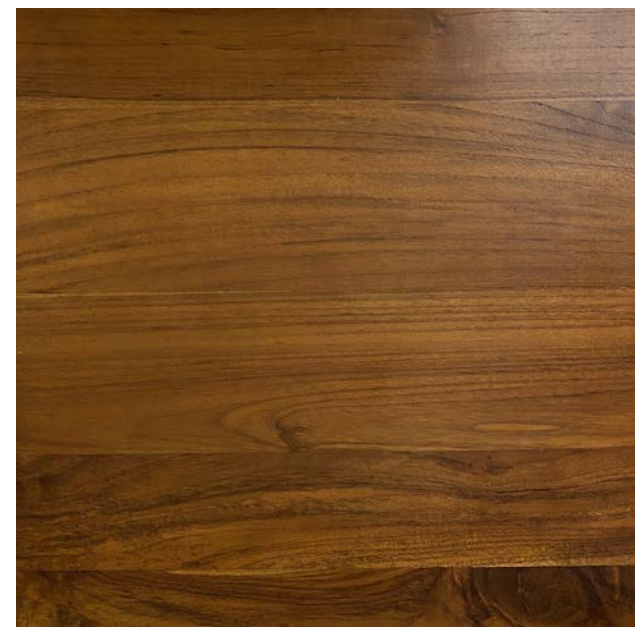
MINDI / BLEACH
(N2)



WERU / NATURAL
(UN)



RECLAIMED TEAK /
NATURAL (XN)



TEAK / TINT
(TT)



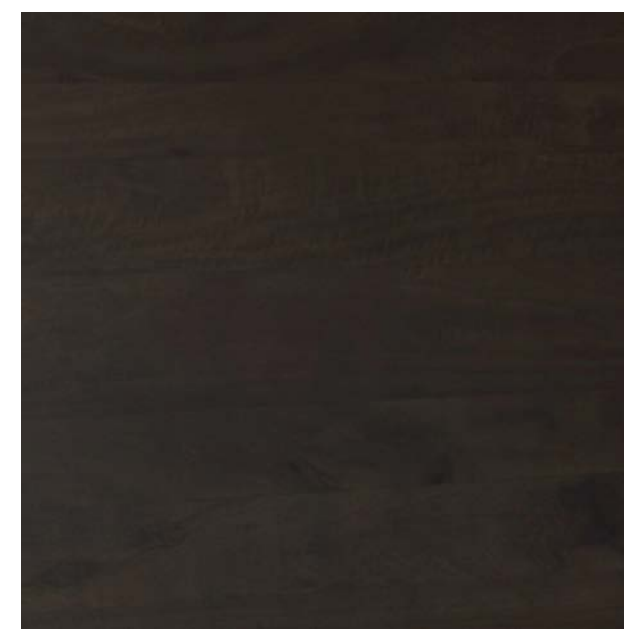
MANGO / TINT
(GT)



MANGO / BLEACH
(G2)



MANGO / MIST
(G6)



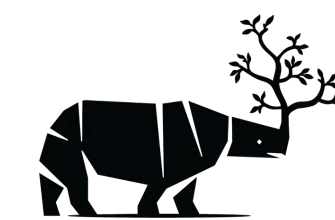
MANGO / OXIDIZED
(G3)



RECLAIMED TEAK /
MATTE (XS)

COMMERCIAL DESIGN PROJECTS

2020



FROM THE SOURCE handcrafted
furniture

+1 212 255 2909
trade@ftsny.com
ftsny.com

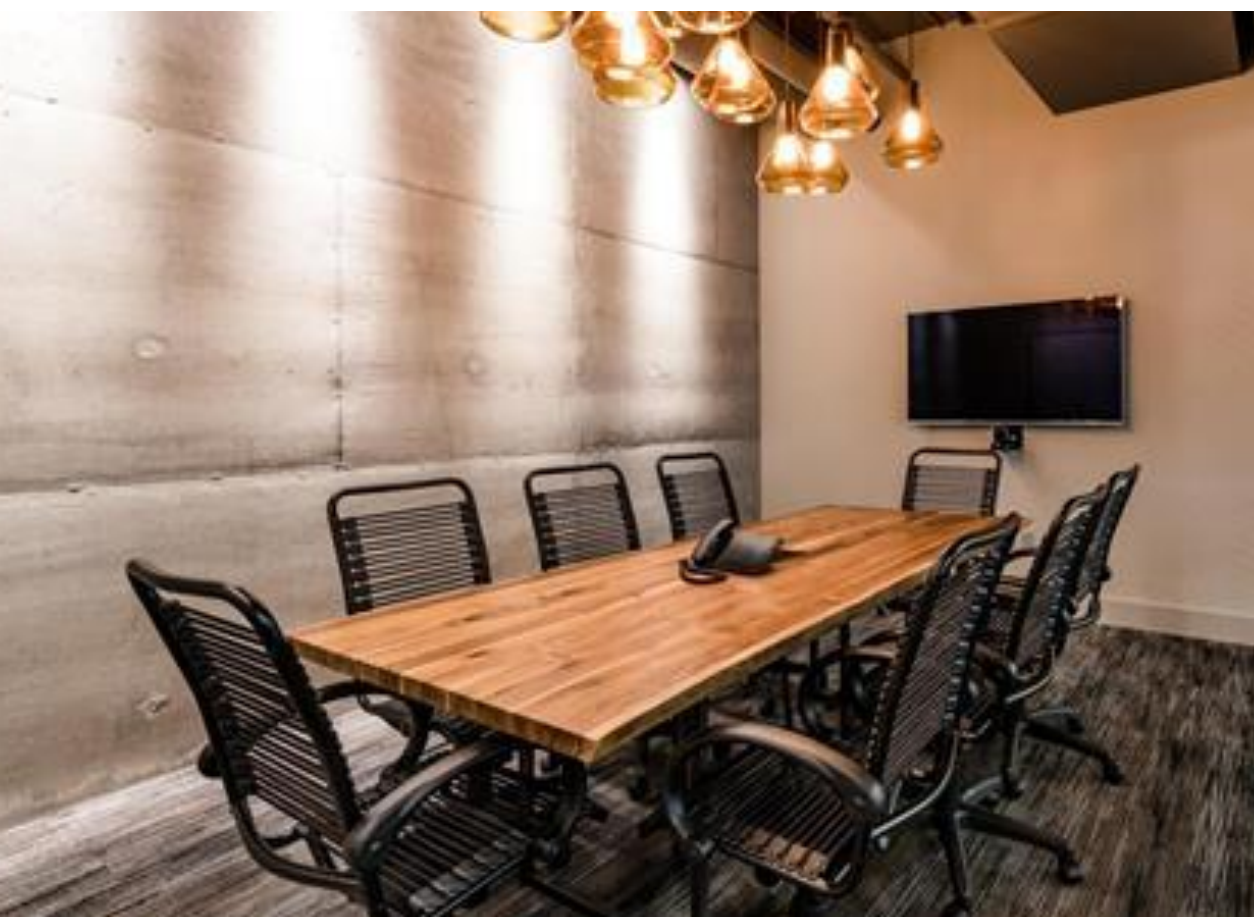
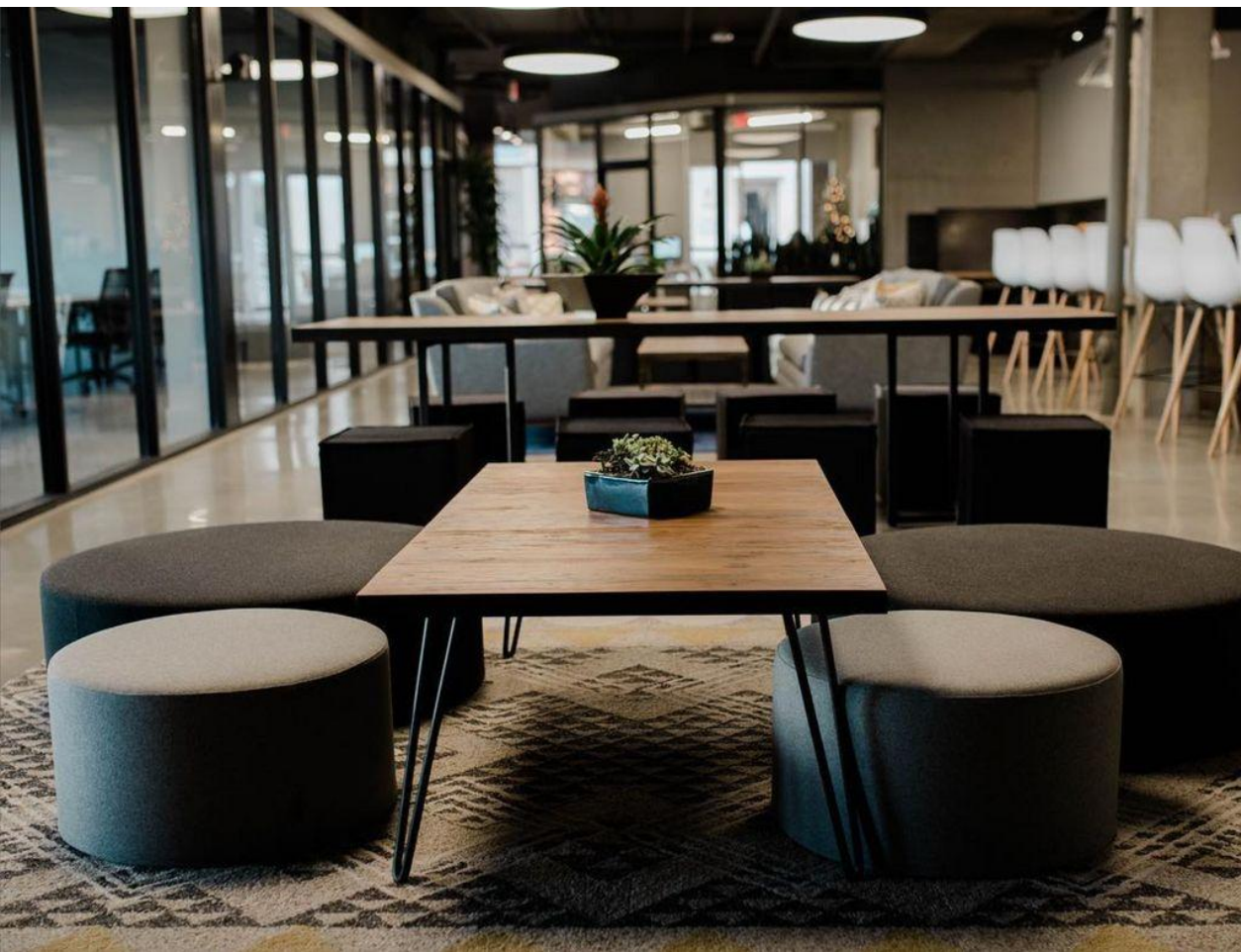




















obsn













CONDÉ NAST



HOTELS
& RESIDENCES

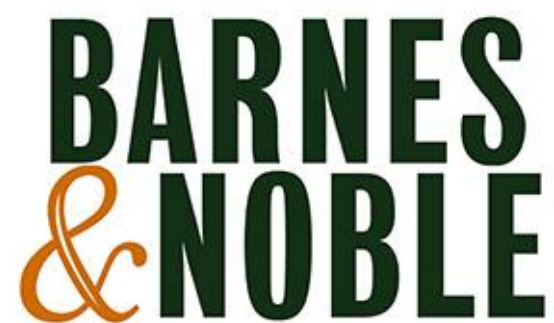
Cole Haan



wework



bloomingdale's

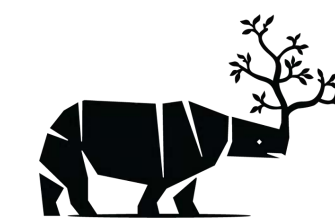


nemaworkshop



CUSTOM WORK

2020



FROM THE SOURCE handcrafted
furniture

+1 212 255 2909
trade@ftsny.com
ftsny.com

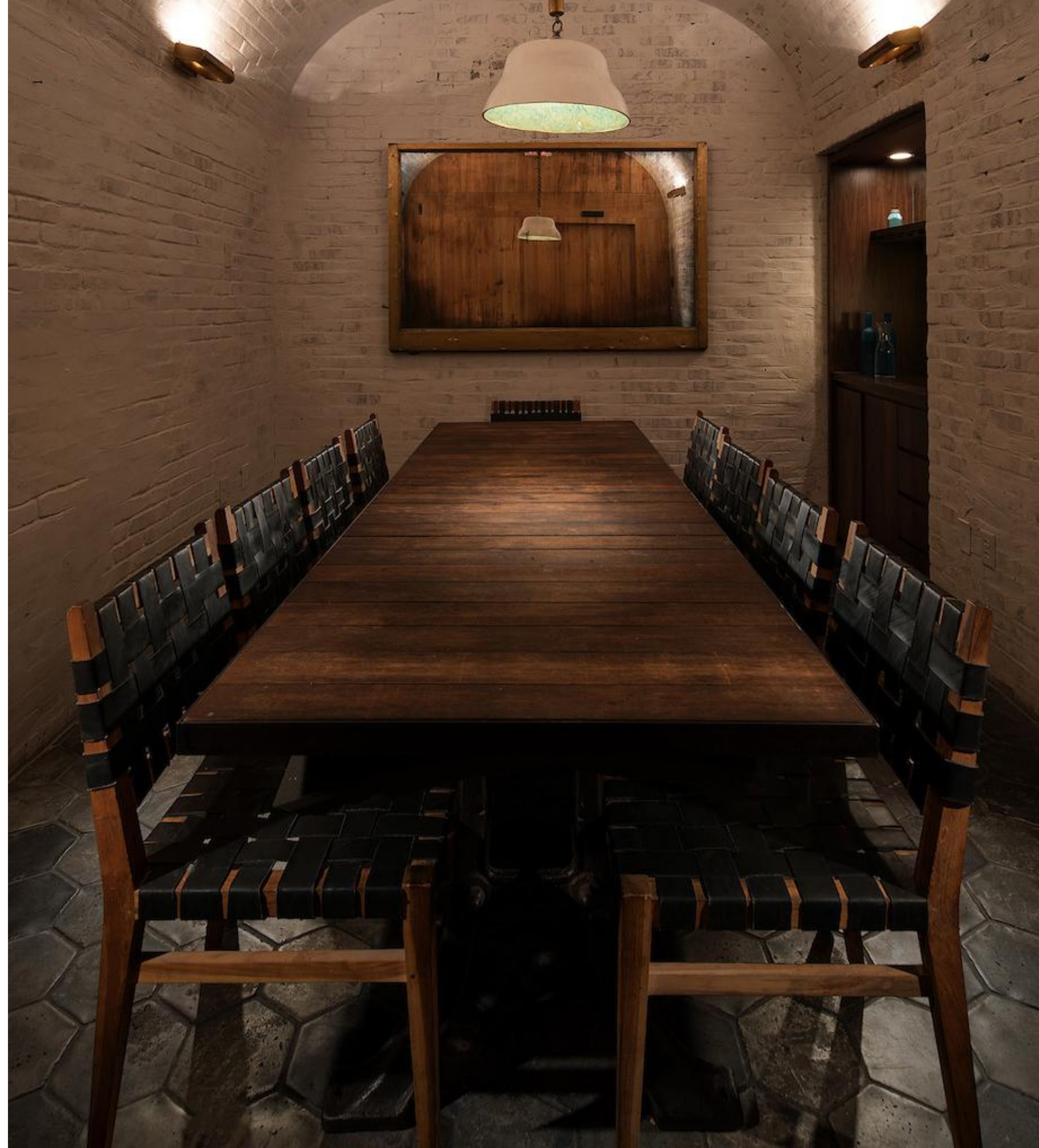






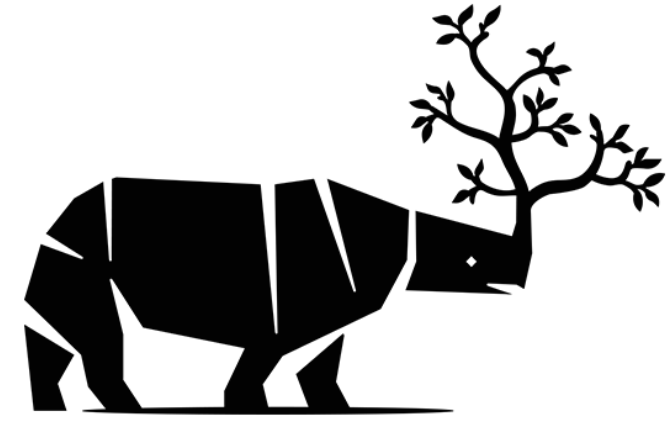












FROM THE SOURCE

handcrafted
furniture



CHELSEA SHOWROOM

132 W 18th Street
New York, NY 10011
+1 212 255 9209

Mon - Sun: 10am - 6pm

OFFICE + WAREHOUSE

58-25 52nd Avenue
Woodside, NY 11377
+1 718 532 1671

By Appointment Only.



Trade@ftsny.com



ftsny.com