



FROM THE SOURCE handcrafted
furniture

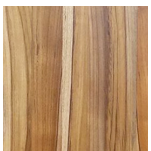
QUAD GLASS DINING TABLE

- Quad table showcases hand made wedged joinery under the glass top, where solid turned legs come together to create the sturdy dining base.
- The base comes knock down in two parts for transportation. Some assembly is required.
- Bases are equipped with levelers.
- Clear finish for indoor use.
- Table is sold as set. Base can also be sold separately. Recommended top size is between 36 - 42 in for 0.5 in thick glass.
- All wood is sustainably sourced from local plantations. Hand made in Central Java, Indonesia.

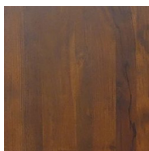
BASE WIDTH: 31 in
MOUNTING PLATE WIDTH: 24 in
TOP DIAMETER: 36 / 42 in
HEIGHT: 29 in

2022 Finishes:

- Teak Natural (TN)
- Teak Tinted (TT)
- Mango Bleached (G2)
- Teak Pitch (TP)



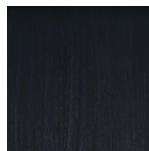
TN



TT



G2



TP

