



FROM THE SOURCE handcrafted
furniture

LOTUS COFFEE TABLE

- Lotus table features a tapered TeakRoot base that is reminiscent of a shape of closing flower petals. A tempered glass top is picked to match the size of the base.
- Each base is unique and naturally varies in shape and size. The height is constant.
- All wood is sustainably sourced from local plantations.
- Hand made in Central Java, Indonesia.

GLASS DIAMETER: 36 - 52 in
HEIGHT: 17 in

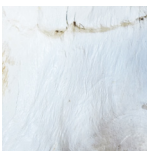


2022 Finishes:

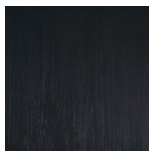
- Teak Root Clear Oil Matte (TA)
- Teak Bleached (T2)
- Teak Pitch (TP)



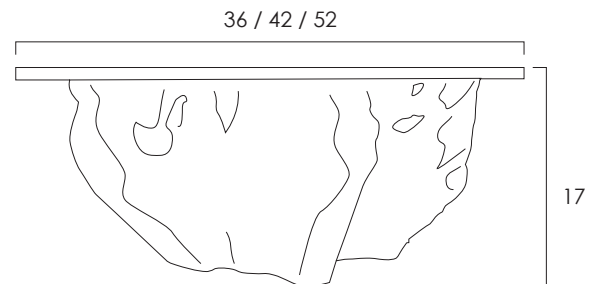
TA



T2



TP



2022
sales@ftsny.com
www.ftsny.com