



FROM THE SOURCE handcrafted
furniture

LEDGE SHORT SHELF BRACKET

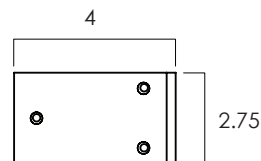
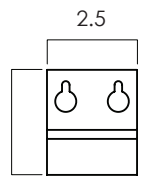
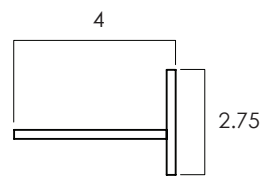
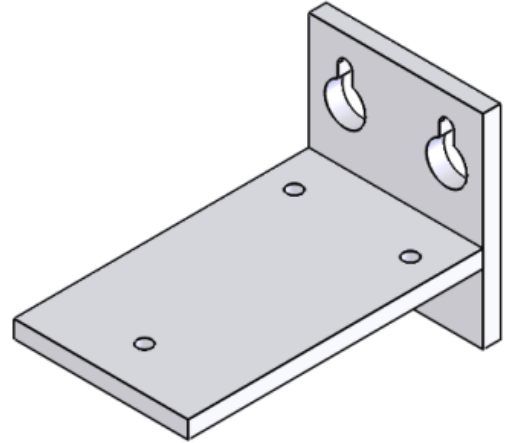
- Ledge is a heavy-duty shelf bracket that is designed for thicker shelves. Maximum recommended shelf depth is 6 in. At least one bracket per 2 feet of shelf is required.
- A longer version is available.
- The shelf is attached at the top of the bracket, making the mounting hardware discrete.
- Clear iron finish for indoor use only.
- Comes with heavy duty Molly bolts for drywall use.
- Hand made in Central Java, Indonesia.

WIDTH: 2.5 in
HEIGHT: 2.75 in
LENGTH: 4 in

- 2022 Finishes:
- Clear Iron (RC)



RC



2022
sales@ftsny.com
www.ftsny.com