



FROM THE SOURCE handcrafted furniture

FLYTE SIT TO STAND DESK

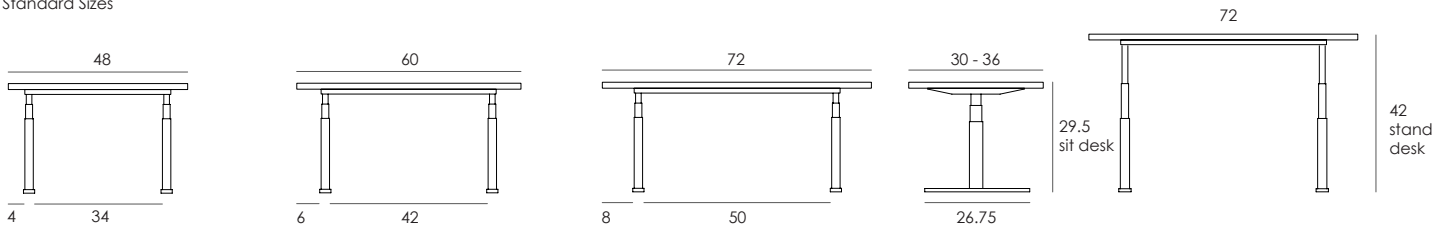
- FLYTE desk is made of imported Flyte base and our standard solid wood tops: 48 x 30 in / 60 x 32 in / 72 x 36 in. The tops can have live edge (Kali style) or straight edge (Lurus style).
- Inquire about custom top sizes; the base is designed to be compatible with the tops 42 - 72 in wide, and 27 - 36 in deep.
- Base is electric dual-motor with 4 programmable height presets. It can be adjusted to a total desk height between 26 in and 51.5 in with a touch of a button. The smooth mechanism will stop as soon as the button is released.
- Anti-collision feature stops the motor when there's an obstacle under the desk, like a file cabinet.
- LED display, one-touch height adjustment control.
- UL - certified, 60 in long power cord.
- Base is available in black or white powdercoating.
- Wire ties are included. Assembly required.



STANDARD DESK WIDTH: 48 / 60 / 72 in
 STANDARD DESK DEPTH: 30 / 32 / 36 in
 HEIGHT RANGE: 26 - 51.5 in

- 2022 Finishes:
- Teak Natural (TN)
 - Teak Tinted (TT)
 - Mango Natural (GN)
 - Mango Bleached (G2)
 - Mango Oxidized (G3)
 - Mango Mist (G4)
 - Weru Natural (UN)

Standard Sizes



2022
 sales@ftsny.com
 www.ftsny.com



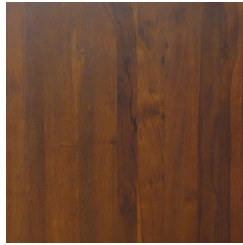
FROM THE SOURCE handcrafted
furniture

WOOD FINISHES

2022



Teak Natural
(TN)



Teak Tinted
(TT)



Teak Clear Matte
Outdoor Grade
(TA)



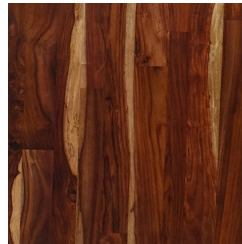
Teak Pitch
(TP)



Reclaimed Teak
Matte (XS)



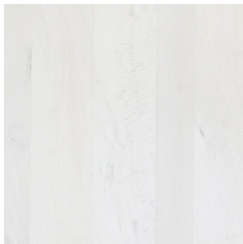
Reclaimed Teak
Matte Oil Outdoor
Grade (XA)



Tali Natural
(LN)



Weru Natural
(UN)



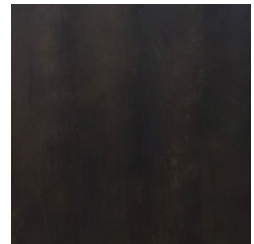
Mango Bleached
(G2)



Mango Natural
(GN)



Mango Mist
(G6)



Mango Oxidized
(G3)