



FROM THE SOURCE handcrafted
furniture

EXTENSION TABLE BRACKET PAIR

- A pair of brackets is required to support one leaf of an extension table. Tracks are designed for non-self storing leaves.

- Clear iron finish for indoor use.

- Recommended leaf size: 12 - 14 in long x 30 - 39 in wide. Minimum leaf length is 9 in and maximum is 18 in. (At least 2/3 of the leaf must be supported by the brackets).

- Works with FTS - made solid wood leaves that are 1.5 in thick.

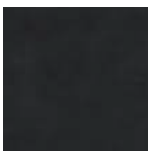
- Extension tracks are only compatible with certain types of bases: Slim, Ace, Wish, pedestal bases, single legs.

- Screws and wingnuts are provided. Professional installation services are available.

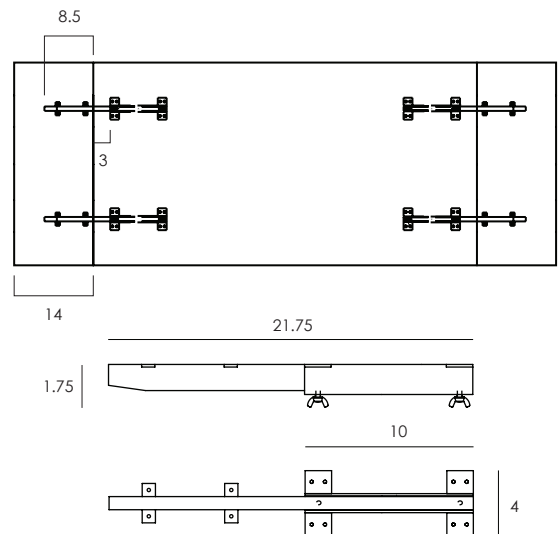
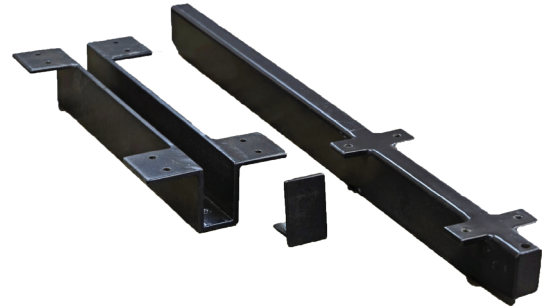
WIDTH: 4 in
HEIGHT: 1.75 in
LENGTH: 10 / 21.75 in

2022 Finishes:

- Clear Iron (RC)



RC



2022
sales@ftsny.com
www.ftsny.com