



FROM THE SOURCE handcrafted
furniture

CUMI SIDE TABLE

- Cumi tables are loved for their unique animalistic personalities. They are field cut from salvaged tree trunks and roots which makes each of them unique. Some tables have same style leg added for stability.
- Available in two heights. The tall one makes a great entryway table. The short one makes a great plant stand or a side table. While height is consistent, surface size, width and shape vary slightly from item to item.
- Tables are equipped with nylon glides.
- Teak Clear Oil Matte finished Cumis are suitable for outdoor use.
- This item is not designed for use as seating. Do not stand, climb or seat on the tables.
- All wood is sustainably sourced from local plantations. Hand made in Central Java, Indonesia.

HEIGHT: 18 in
WIDTH: 10 - 18 in

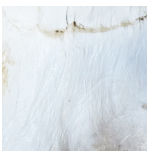
HEIGHT: 39 in
WIDTH: 15 - 25 in

2022 Finishes:

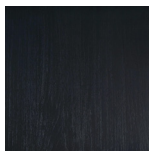
- Teak Clear Oil Matte (TA)
- Teak Bleached (T2)
- Teak Pitch (TP)



TA



T2



TP

