



**HIGH PERFORMANCE
ALUMINUM RADIATORS**

About Us,,,

DeWitts Radiator is a unique company because we control 100% of the manufacturing process in house. We assemble and braze our own cores, to insure the quality throughout the total process. The fact is, DeWitts is the only USA aftermarket radiator company that owns an aluminum Nocokol® brazing furnace. This equipment is required to produce quality, epoxy free, aluminum cores and until now it has been reserved for only the big car manufacturers.



*“The difference
between
extraordinary
and ordinary is
that little extra”*

-Jimmy Johnson-

Located in Howell Michigan, our 24,000 square foot building is home for twelve full time employees. We have the capability to build custom aluminum radiators with a variety of tube widths and fin designs. We have several fin machines to produce the type of fin required for your application. Most of our

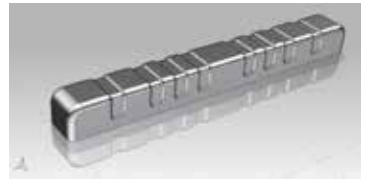


radiators are assembled with press formed end tanks. This eliminates the fabrication seams and potential leak points of a common box tank. It also provides an original look for those classic cars. Every radiator is available with our Black Ice™ epoxy coat. All of our products are made with USA material and labor, and you will see the difference in the final product.

Corvette Direct Fit®

Natural	Black Ice	Years	Engine
1139055A	1239055A	1955-60	SB
1139055M	1239055M	1955-60	SB
1139061A	1239061A	1961-62	SB
1139061M	1239061M	1961-62	SB
1139063A	1239063A	1963-72	SB
1139063M	1239063M	1963-72	SB
1139065M	1239065M	65, 67-69	BB/L88
1139066A	1239066A	1966-68	BB
1139066M	1239066M	1966-68	BB
1139069A	1239069A	1969-72	BB
1139069M	1239069M	1969-72	BB
1139070A	1239070A	1969-72	SB
1139070M	1239070M	1969-72	SB
1139073A	1239073A	1973-76	SB/BB
1139073M	1239073M	1973-76	SB/BB
1139077A	1239077A	1977-82	SB/BB
1139077M	1239077M	1977-82	SB/BB
1139084A	na	1984-89	SB/BB
1139090A	na	1990-96	SB/BB
1139090M	na	1990-96	SB/BB
1139090E	na	1990-96	SB/BB
1139097A	na	1997-00	All
1139097M	na	1997-04	All
1139097E	na	1997-04	All
1139097B	na	1997-00	All
1139101A	na	2001-04	All
1139101B	na	2001-04	All
1139105A	na	2005-13	All
1139105M	na	2005-13	All
1139105E	na	2005-13	All
1139105B	na	2005-13	All

Every DeWitts Direct Fit® radiator is designed to mount in the factory support, without any modification. We use press formed end tanks, which eliminates fabrication seams and potential leak points.



Corvette Fan/Rad Combination

Natural	Black Ice	Years	Engine
4139024A	4239024A	1963-65	SB
4139024M	4239024M	1963-65	SB
4139025A	4239025A	1966-67	SB
4139025M	4239025M	1966-67	SB
4139055A	4239055A	1955-57	SB
4139055M	4239055M	1955-57	SB
4139058A	4239058A	1958-60	SB
4139058M	4239058M	1958-60	SB
4139061A	4239061A	1961-62	SB
4139061M	4239061M	1961-62	SB
4139063A	4239063A	1963-72	SB
4139063M	4239063M	1963-72	SB
4139065M	4239065M	65, 67-69	BB
4139066A	4239066A	1966-68	BB
4139066M	4239066M	1966-68	BB
4139069A	4239069A	1969-72	BB
4139069M	4239069M	1969-72	BB
4139070A	4239070A	1969-72	SB
4139070M	4239070M	1969-72	SB
4139073A	4239073A	1973-76	SB/BB
4139073M	4239073M	1973-76	SB/BB
4139077A	4239077A	1977-82	All
4139077M	4239077M	1977-82	All
4139105A		2005-13	All
4139105M		2005-13	All
4139105E		2005-13	All
4139105B		2005-13	All

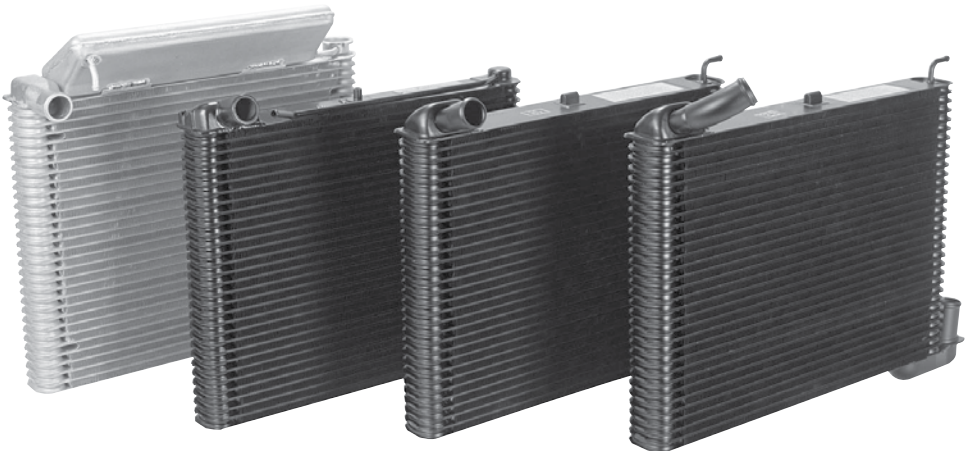
These units combine the best of both worlds....A DeWitts high performance aluminum radiator and a Spal® electric fan. Each fan is professionally mounted and the temperature switch is installed into the radiator.



Corvette Restoration Radiators

Model	GM Part #	Details
940A	3157516	Flat Top Tank
940B	3151116	Top Tank With Ribs
941	3155316	1" Wide Mount
942	3155316	2" Wide Mount
943A	3150916	Non-painted & Bump Casting
943A	3150916	Painted & bump Casting
944A	3150916	Flat Casting-Tag Dated
944B	3150916	Flat Casting-Stamped Dated
945	3005936	Early 65 BB with straight neck
955	3007436	2nd design curved neck

DeWitts exclusive Restoration Radiators™ are 100% exact reproductions for all 1960-1972 Corvettes. This “stacked plate” type radiator is the ultimate in performance and brazed with today’s state of the art techniques. Each radiator is uniquely date coded, to match your Corvettes build date.



Corvette LS series Conversion

Model	Year	Engine
6139055A	1955-60	SB
6139055M	1955-60	SB
6139061A	1961-62	SB
6139061M	1961-62	SB
6139063A	1963-72	SB
6139063M	1963-72	SB
6139065M	65, 67-69	BB/L88
6139066A	1966-68	BB
6139066M	1966-68	BB
6139069A	1969-72	BB
6139069M	1969-72	BB
6139070A	1969-72	SB
6139070M	1969-72	SB
6139073A	1973-76	SB/BB
6139073M	1973-76	SB/BB
6139077A	1977-82	SB/BB
6139077M	1977-82	SB/BB



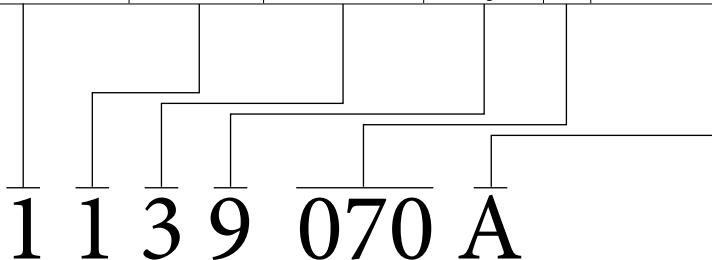
Surge Tanks and Filler Caps

Model	Year	Details
400	1960-61	Corvette
401	1963-64	Corvette
402	1965-72	Corvette
403	1968-72	Corvette
420	Service	Corvette
421	Service	Corvette
422	Service	Corvette
419	Service	Corvette
512A	All	Logo Cap/Round/Natural
512B	All	Logo Cap/Round/Black
512P	All	Logo Cap/Round/Polished
514A	All	Cap/Gripper/Natural
514B	All	Cap/Gripper/Black



Cracking the code

Series	Finish	Core Design	OEM	ID #	Cooler Option
1 = Direct Fit Radiator	1 =Natural	1 = Single 1.25	9 = GM	xxx	A = Automatic Trans
2 = Custom Fit Radiator	2 =Black	2 = Single 1.5"	8 = Ford	xxx	M = Manual Trans
4 = Radiator/Fan Combo	3 =Polished	3 = Dual 1"	7 =Mopar	xxx	E = Engine Oil
6 = LS Series Radiator	4 =TBD	4 = Dual 1.25"	6 = Jeep	xxx	B = EOC and TOC



Block 1 (Series) indicates what type radiator

Block 2 (Finish) Natural, Black Ice, or Polished

Block 3 (Core) Tube size and number of rows

Block 4 (OEM) The original manufacturer

Block 5 (ID #) 3 digit number assigned to the application

Block 6 (Cooler) Indicates internal components

In the above sample, the model number indicates a Direct fit® line radiator (1) with a natural finish (1), and two rows of 1" tubes (3). This is our standard radiator and the quickest delivery item however, any part number can be customized to meet your requirements.

What is Black Ice?

Our Black Ice option is a special two part epoxy paint. It is applied in a spray and it adheres to the aluminum and will not ever flake or peel off. It is a semi-gloss finish that will give the radiator the look of an original copper/brass unit. The total thickness of the dried product is only .005" thick and it will not affect the cooling performance whatsoever.

LS Series Conversions

All of our aluminum radiators can be configured for your LS engine upgrade. Simply find the standard application number in this guide and replace the first number with the numeral 6. This indicates the application is for a LS engine and we will change the inlet and outlet connections to match the new engine. All LS series packages include an electric fan mounted directly to the radiator, and the electrical wiring. We also add a small connection for steam line.

Chevelle and Camaro Direct Fit®

Natural	Black Ice	Application	Years	Engine
1139001A	1239001A	Chevelle	1964-65	SB/BB
1139001M	1239001M	Chevelle	1964-65	SB/BB
1139002A	1239002A	Chevelle	1966-67	SB/BB
1139002M	1239002M	Chevelle	1966-67	SB/BB
1139003A	1239003A	Chevelle	1968-72	BB
1139003M	1239003M	Chevelle	1968-72	BB
1139034A	1239034A	Chevelle	1973-77	SB/BB
1139034M	1239034M	Chevelle	1973-77	SB/BB
1139004A	1239004A	Camaro	1967-69	SB/Z28
1139004M	1239004M	Camaro	1967-69	SB/Z28
1139022A	1239022A	Camaro	1967-69	BB
1139022M	1239022M	Camaro	1967-69	BB
1139005A	1239005A	Camaro	1970-81	SB/BB
1139005M	1239005M	Camaro	1970-81	SB/BB
1139006A		Camaro	1982-92	SB/BB
1139006M		Camaro	1982-92	SB/BB
1139007A		Camaro	1993-02	LT/LS
1139007M		Camaro	1993-02	LT/LS
1139008A		Camaro	2010-11	LS
1139009A		Camaro	2012	LS



Mustang Direct Fit®

Natural	Black Ice	Years	Engine	Flow
1138001A	1238001A	1964-66	TL/BR	DF
1138001M	1238001M	1964-66	TL/BR	DF
1138002A	1238002A	1964-66	TR/BL	DF
1138002M	1238002M	1964-66	TR/BL	DF
1138003A	1238003A	1964-66	TR/BR	DF
1138003M	1238003M	1964-66	TR/BR	DF
1138004A	1238004A	1967	All	DF
1138004M	1238004M	1967	All	DF
1138005A	1238005A	1967-70	All	CF
1138005M	1238005M	1967-70	All	CF
1138006A	1238006A	1967-70	All	CF
1138006M	1238006M	1967-70	All	CF
1138007A	1238007A	1967-70	All	CF
1138007M	1238007M	1967-70	All	CF
1138008A	1238008A	1967-70	All	CF
1138008M	1238008M	1967-70	All	CF
1138009A	1238009A	71-73	All	CF
1138009M	1238009M	71-73	All	CF
1138011A	1238011A	1974-78	All	CF
1138011M	1238011M	1974-78	All	CF
1138012A	1238012A	1979-93	All	CF
1138012M	1238012M	1979-93	All	CF
1138013A	na	1994-96	All	CF
1138013M	na	1994-96	All	CF
1138014A	na	1997-04	All	CF
1138014M	na	1997-04	All	CF
1138015M	na	2005-10	All	CF



GM Classic DirectFit®

Natural	Black Ice	Application	Years	Engine
1139010A	1239010A	Chevy II	1962-67	SB/BB
1139010M	1239010M	Chevy II	1962-67	SB/BB
1139011A	1239011A	Nova	1968-72	20.75
1139011M	1239011M	Nova	1968-72	20.75
1139035A	1239035A	Nova	1973-74	23.5
1139035M	1239035M	Nova	1973-74	23.5
1139005A	1239005A	Nova	1975-79	26.25
1139005M	1239005M	Nova	1975-79	26.25
1139012A	1239012A	Bel Air/150/210	1955-57	V8
1139012M	1239012M	Bel Air/150/210	1955-57	V8
1139013A	1239013A	Bel Air/150/210	1955-57	V6
1139013M	1239013M	Bel Air/150/210	1955-57	V6
1139015A	1239015A	Full Size (Impala)	1959-62	SB/BB
1139015M	1239015M	Full Size (Impala)	1958-62	SB/BB
1139016A	1239016A	Full Size (Impala)	1963-70	SB/BB
1139016M	1239016M	Full Size (Impala)	1963-70	SB/BB
1139017A	1239017A	C10 Truck	1963-66	SB/BB
1139017M	1239017M	C10 Truck	1963-66	SB/BB
1139018A	1239018A	C10 Truck/Blazer	1967-72	SB/BB
1139018M	1239018M	C10 Truck/Blazer	1967-72	SB/BB
1139003A	1239003A	C10/Blazer/Suburban	1973-87	SB/BB
1139003M	1239003M	C10/Blazer/Suburban	1973-87	SB/BB
1139005A	1239005A	G Body/Monte	1978-87	SB/BB
1139005M	1239005M	G Body/Monte	1978-87	SB/BB
1139021A	1239021A	Firebird	1970-81	SB/BB
1139021M	1239021M	Firebird	1970-81	SB/BB



Mopar Classic Direct Fit®

Natural	Black Ice	Year	Engine	I/O	DPI
---------	-----------	------	--------	-----	-----

Barracuda & Challenger

1137001	1237001	1966	L6	TCR/BR	1647
1137002	1237002	1966	L6	TCR/BR	1644
1137003	1237003	1966	BB	TC/BL	1645
1137004	1237004	67-69	L6	TC/BR	1636
1137005	1237005	67-69	SB & BB	TC/BL	1637
1137006	1237006	70-73	L6	TR/BR	512
1137007	1237007	70-73	BB	TC/BL	1646
1137008	1237008	70-73	BB	TL/BL	1641
1137009	1237009	70-73	SB	TL/BR	374
1137010	1237010	70-73	BB	TR/BL	375
1137011	1237011	70-73	SB	TL/BR	511

Road runner/GTX/Satellite

1137004	1237004	66-69	BB	TC/BR	1636
1137012	1237012	66-69	SB	TR/BL	1640
1137013	1237013	66-69	BB	TL/BL	1639
1137014	1237014	66-69	SB	TL/BL	1638
1137005	1237005	66-69	SB	TC/BL	1637
1137007	1237007	70-72	BB	TC/BL	1646
1137008	1237008	70-72	BB	TL/BL	1641
1137009	1237009	70-72	SB	TL/BR	374
1137010	1237010	70-72	BB	TL/BR	375
1137011	1237011	70-72	SB	TL/BR	511
1137015	1237015	73-74	BB	TR/BR	503
1137016	1237016	73-74	SB	TL/BR	504

Charger/RT/SuperBee/Coronet

1137017	1237017	65	All	TC/BR	1633
1137013	1237013	66-69	BB	TL/BL	1639
1137004	1237004	66-69	BB	TC/BR	1636
1137012	1237012	66-69	BB	TR/BL	1640
1137005	1237005	66-69	SB	TC/BL	1637
1137014	1237014	66-69	SB	TL/BL	1638
1137007	1237007	70-72	BB	TC/BL	1646
1137008	1237008	70-72	BB	TL/BL	1641
1137009	1237009	70-72	SB	TL/BR	374
1137010	1237010	70-72	BB	TL/BR	375
1137011	1237011	70-72	SB	TL/BR	511
1137015	1237015	73-74	BB	TR/BR	503
1137016	1237016	73-74	SB	TL/BR	504

Add cooler suffix to part number A = Automatic M= Manual

Chevelle and Camaro Rad/Fan Combo

Natural	Black Ice	Application	Years	Engine
4139001A	4239001A	Chevelle	1964-65	SB/BB
4139001M	4239001M	Chevelle	1964-65	SB/BB
4139002A	4239002A	Chevelle	1966-67	SB/BB
4139002M	4239002M	Chevelle	1966-67	SB/BB
4139003A	4239003A	Chevelle	1968-72	BB
4139003M	4239003M	Chevelle	1968-72	BB
4139034A	4239034A	Chevelle	1973-77	SB/BB
4139034M	4239034M	Chevelle	1973-77	SB/BB
4139004A	4239004A	Camaro	1967-69	SB/Z28
4139004M	4239004M	Camaro	1967-69	SB/Z28
4139022A	4239022A	Camaro	1967-69	BB
4139022M	4239022M	Camaro	1967-69	BB
4139005A	4239005A	Camaro	1970-81	SB/BB
4139005M	4239005M	Camaro	1970-81	SB/BB



Mustang Rad/Fan Combination

Natural	Black Ice	Years	Engine	Flow
4138001A	4238001A	1964-66	TL/BR	DF
4138001M	4238001M	1964-66	TL/BR	DF
4138002A	4238002A	1964-66	TR/BL	DF
4138002M	4238002M	1964-66	TR/BL	DF
4138003A	4238003A	1964-66	TR/BR	DF
4138003M	4238003M	1964-66	TR/BR	DF
4138004A	4238004A	1967	All	DF
4138004M	4238004M	1967	All	DF
4138005A	4238004A	1967-70	All	CF
4138005M	4238005M	1967-70	All	CF
4138006A	4238006A	1967-70	All	CF
4138006M	4138006M	1967-70	All	CF
4138009A	4238009A	71-73	All	CF
4138009M	4238009M	71-73	All	CF
4138011A	4238011A	1974-78	All	CF
4138011M	4238011M	1974-78	All	CF
4138012A	4238012A	1979-93	All	CF
4138012M	4238012M	1979-93	All	CF



GM Classic Rad/Fan Combination

Natural	Black Ice	Application	Years	Engine
4139010A	4239010A	Chevy II	1962-67	SB/BB
4139010M	4239010M	Chevy II	1962-67	SB/BB
4139011A	4239011A	Nova	1968-72	20.75
4139011M	4239011M	Nova	1968-72	20.75
4139035A	4239035A	Nova	1973-74	23.5
4139035M	4239035M	Nova	1973-74	23.5
4139005A	4239005A	Nova	1975-79	26.25
4139005M	4239005M	Nova	1975-79	26.25
4139012A	4239012A	Bel Air/150/210	1955-57	V8
4139012M	4239012M	Bel Air/150/210	1955-57	V8



Spal Fans



DeWitts is a proud dealer of Spal® Fans and accessories. Spal is a major supplier to most of the high end Italian sports cars and use long-life motor designs.

DeWitts Radiator

1275 Grand Oaks Drive

Howell, Michigan 48843

517-548-0600 Phone

517-548-0602 Fax



WWW.DEWITTS.COM

MEMBER OF

National Automotive

NARSA

Radiator Service Association

*Cooling System
Specialists*



Made in USA



Serving the Motor
Vehicle Aftermarket

MEMBER