




# HIGH PERFORMANCE ALUMINUM RADIATORS

CUSTOM BRAZING  
OPERATIONS





**CONTACT US**

 **517-548-0600**

[www.DEWITTS.COM](http://www.DEWITTS.COM)

**DeWitts™ Radiator**

29988 Anthony Drive

Wixom, Michigan 48393

## LIFETIME WARRANTY

DeWitts™ Radiator (DWR) warrants all aluminum radiators to be free from defects in materials and workmanship for as long as you own the vehicle in which it was originally installed. This warranty is extended only to the first purchaser of any such radiator at retail. Proof of purchase must be provided in the way of a sale receipt from DWR or an authorized dealer. If the radiator is used in any racing application this warranty is considered null and void.

***This warranty does not cover labor, materials not manufactured by DWR, or shipping charges. Radiators repaired or altered by parties outside DWR are not covered by this warranty. The retail purchaser is responsible for the appropriate use and application of the product. This warranty does not cover the effects of physical or chemical properties of water, steam, or other liquids used in the radiator. Radiators used without an adequate proportion of premium quality antifreeze coolant and distilled water are not covered by this warranty. DWR radiators require a correct proportion of quality coolant, which contains aluminum corrosion inhibitors in the formula and distilled water. All Corvette cooling systems must include a radiator pressure cap with the proper pressure rating.***

Claims for internal damage of the engine, components, cosmetics, or user's vehicle are not covered by this warranty. It is the responsibility of the product user to monitor engine operation and have proper detection devices installed to warn the user of overheating. Specific exemptions to this warranty include tube damage, tubes ballooning or bursting from excessive engine operating temperature or pressure, internal corrosion due to inadequate proportions of antifreeze/coolant, or damage to the radiator resulting from collision or service. DWR shall not be responsible for damages to its product or injury to persons using the product when improperly opening radiator pressure caps, burst hoses, etc. DWR shall not be responsible for injury or harm to persons or property caused by persons or vehicles using our products.

The purchaser's remedy for breach of this warranty, exclusive of all other remedies provided by law, is expressly limited to repair or replacement of the part purchased. All products returned for warranty consideration must be returned to DWR with all transportation expenses prepaid. Upon receipt of the product, DWR will examine the product to determine the condition and validity of the claim. DWR reserves the right to repair or replace the product at our discretion. Expanded or ballooned tubes are the result of an over pressure condition and this is not covered under warranty.

Radiators which were damaged in shipping should immediately be reported to the shipping carrier as damaged, and claims of damage filed accordingly. Contact the transport carrier (UPS, truck line, etc.) for procedures in filing a damage claim with the carrier or their agent. Do not return a product damaged in shipping to DeWitts™ Radiator. ***Distilled water and premium antifreeze must be used with all aluminum radiators!***

© Copyright 2024 AFCO Performance Group • Printed in the U.S.A.

This catalog may not, in whole or in part, be copied, photocopied, reproduced, or converted to any electronic or machine-readable form without written consent of AFCO Performance Group.



# CONTENTS

- 2 CONTACT
- 4 BRAZING/CUSTOM
- 5 CAPS/FITTINGS/COOLERS
- 6 CORVETTE RESTORATION
- 8 CORVETTE
- 22 CAMARO
- 25 CHEVELLE
- 28 CHEVY
- 30 IMPALA
- 33 CADILLAC
- 34 C10 & TRUCK
- 36 JEEP/MOPAR
- 37 MUSTANG
- 41 BRUSHLESS FAN COMBOS
- 42 FAN KITS
- 44 ACCESSORIES
- 47 ABOUT US

# BRAZING

## BRAZING CONSULTATION & DEVELOPMENT

Let our experts guide you through the process and develop a plan that fits your needs, budget, and timeline.

## PRODUCTION BRAZING

Our brazing knowledge and experience will help minimize the cost of your prototype and development.

## ALUMINUM CORES

We produce high-quality aluminum cores for many types of industries. Single row core sizes are 1.00", 1.25", and 1.50". Dual row core sizes are 1.00" and 1.25".

## HEADERS

Custom header lengths are available with custom side channel options.



## OUR CORE STANDARDS

- Extruded side channels.
- Two side clad headers.
- Serpentine fin.



Serpentine Louvered Fin @ 15fpi



Clad Fillets on Both Sides.

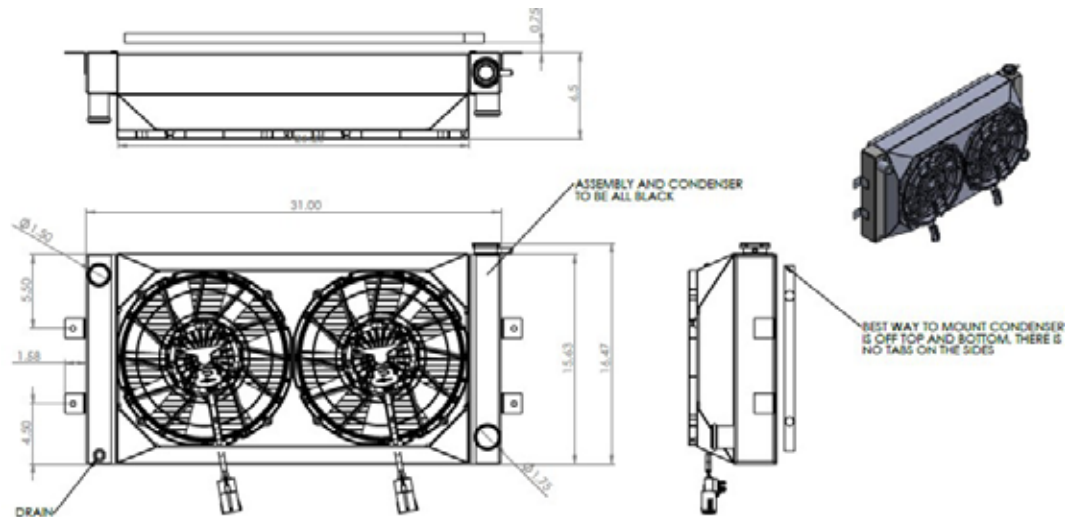
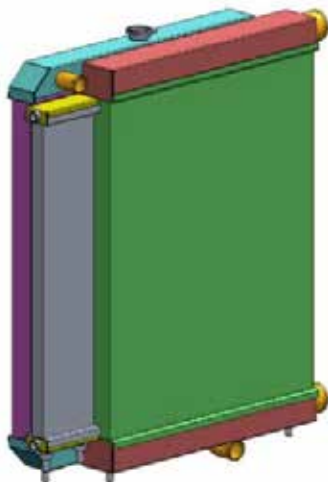


Double Cladded 0.080 Headers

# CUSTOM RADIATORS

## DEWITTS™ CUSTOM RADIATORS

For those creating and crafting one-off builds, DeWitts™ custom services can provide a solution. Using your dimensions, combinations, and imagination, the DeWitts™ engineering and fabrication teams will model and build anything to suit your needs. An initial phone consultation allows the lead time and price to be determined. Custom radiators range from \$1,399 to \$1,949 and custom fan kits start at \$699 to \$1,249 depending on component selection.



## DEWITTS™ RADIATOR CAP



Black 15 PSI DeWitts™ logo engraved billet Posi-grip radiator cap.

**32-516B** \$44<sup>99</sup>

## ALUMINUM HEATSINK TRANSMISSION COOLERS



These all-aluminum transmission coolers are designed for maximum heat transfer and mount easily to most frame rails. Available in compact and efficient sizes of 12", 15" or 18" lengths. Includes two hose nipples to fit 3/8" hoses.

12" Length	<b>32-23112</b>	\$55 <sup>99</sup>
15" Length	<b>32-23115</b>	\$55 <sup>99</sup>
18" Length	<b>32-23118</b>	\$55 <sup>99</sup>

## TRANSMISSION COOLER FRAME RAIL MOUNT



This new transmission cooler fits along the frame rail or another out-of-the-way location and delivers exceptional cooling. This transmission cooler measures 17.5" overall length, 2.5" overall width, and 1.75" overall height. The two-row cooling design has a -6 AN inlet size and comes with all necessary hardware and instructions for an easy installation.

**32-23111** \$83<sup>99</sup>

## DEWITTS™ RADIATOR FITTINGS

### Port Fittings



	End A	End B	Orientation	Wrench Size	Material	Finish	Price
<b>32-201</b>	Male -8AN O-ring	Male -10AN	90°	7/8"	Steel	Clear Zinc	\$24.99
<b>32-202</b>	Male -8AN O-ring	Male -10AN	Straight	1"	Aluminum	Natural	\$7.99
<b>32-303 (shown)</b>	Male -8AN O-ring	Male -10AN	45° Swivel	1-1/8"	Aluminum	Black Anodize	\$27.99

### Heater Hose Fittings



<b>32-60460 (shown)</b>	Male -6AN	Male 3/8" NPT	Straight	3/4"	Aluminum	Nickel	\$3.99
<b>32-66369</b>	Male 1/2" NPT	5/8" Hose Push On	Straight	7/8"	Steel	Chrome	\$14.99
<b>32-66370</b>	Male 1/2" NPT	5/8" Hose Push On	Straight	7/8"	Aluminum	Polished	\$19.99
<b>32-66380</b>	Male 1/2" NPT	5/8" Push On	90°	7/8"	Steel	Chrome	\$16.99
<b>32-66376</b>	Male 1/2" NPT	3/4" Hose Push On	Straight	7/8"	Steel	Chrome	\$16.99
<b>32-66382</b>	Male 1/2" NPT	3/4" Push On	90°	7/8"	Steel	Chrome	\$17.99

### Quick Connect



<b>32-876A (shown)</b>	Male M18-1.5	3/8" Coupling	Straight	3/4"	Aluminum	Natural	\$19.99
<b>32-876B</b>	3/4"-16	1/2" Coupling	Straight	1"	Aluminum	Natural	\$12.99
<b>32-876D</b>	9/16"-18	3/8" Coupling	Straight	3/4"	Steel	Plated	\$4.99
<b>32-876G</b>	Male 3/8" NPT	3/8" Coupling	Straight	3/4"	Steel	Black Oxide	\$9.99
<b>32-876H</b>	Male 7/8"-14 UNF	5/8" Coupling	Straight	1-1/4"	Aluminum	Natural	\$5.99
<b>32-876J</b>	Male 5/8"-18 UNF	3/8" Coupling	Straight	3/4"	Steel	Plated	\$14.99

### Adapters



<b>32-4800</b>	Male -6AN	1/2"-20 Inverted Flare	Straight	3/4"	Steel	Zinc	\$6.99
<b>32-4802</b>	Male -6AN	5/8"-18 Inverted Flare	Straight	3/4"	Steel	Zinc	\$9.99
<b>32-4808 (shown)</b>	Male -6AN	M18-1.5 Inverted Flare	Straight	3/4"	Steel	Zinc	\$9.99
<b>32-609</b>	Female -10AN	Female -10AN	Straight	1-1/8"	Aluminum	Black Anodize	\$9.99

### Plastic Unions



<b>32-66371 (shown)</b>	5/8" Barb	5/8" Barb	Straight	Push On	Plastic	Black	\$9.99
<b>32-66372</b>	5/8" Barb	5/8" Barb	90°	Push On	Plastic	Black	\$11.99

### Pipe Plugs



<b>32-242</b>	1/8" NPT	Hex	Straight	3/16" Allen	Aluminum	Black	\$6.99
<b>32-244 (shown)</b>	1/4" NPT	Hex	Straight	1/4" Allen	Aluminum	Black	\$4.99
<b>32-246</b>	3/8" NPT	Hex	Straight	5/16" Allen	Aluminum	Black	\$4.99
<b>32-248</b>	1/2" NPT	Hex	Straight	3/8" Allen	Aluminum	Blue	\$4.99

### Drain Valves



<b>32-602</b>	1/4" NPT	Wings	Straight	9/16"	Aluminum	Natural	\$34.99
<b>32-BC9 (shown)</b>	1/4" NPT	Wings	Straight	9/16"	Steel	Gold Zinc	\$11.99



32-940B

## CORVETTE RESTORATION RADIATORS

DeWitts™ exclusive Restoration Radiators™ are 100% exact reproductions for all 1960-1972 Corvettes. This “stacked plate” type radiator is the ultimate in performance and is brazed with today’s state of the art techniques. Each radiator is uniquely date coded, to match your Corvette build date.

Model Year	GM Part#	Details		Price
1960-1961	3157516	Flat Top Tank	<b>32-940A</b>	\$1,499 <sup>99</sup>
1960-1961	3151116	Top Tank With Ribs	<b>32-940B</b>	\$1,499 <sup>99</sup>



32-943B

Model Year	GM Part#	Details		Price
1961	3150916	Non-Painted / Bump Casting	<b>32-943A</b>	\$1,299 <sup>99</sup>
1961	3150916	Painted / Bump Casting	<b>32-943B</b>	\$1,299 <sup>99</sup>
1962	3150916	Flat Casting / Tag Dated	<b>32-944A</b>	\$1,299 <sup>99</sup>
1962	3150916	Flat Casting / Dated C62	<b>32-944B-C62</b>	\$1,299 <sup>99</sup>
1962	3150916	Flat Casting / Dated D62	<b>32-944B-D62</b>	\$1,299 <sup>99</sup>
1962	3150916	Flat Casting / Dated E62	<b>32-944B-E62</b>	\$1,299 <sup>99</sup>



32-941

Model Year	GM Part#	Details		Price
1965-1972	3155316	1" Wide Mount	<b>32-941</b>	\$1,299 <sup>99</sup>
1963-1964	3155316	2" Wide Mount	<b>32-942</b>	\$1,299 <sup>99</sup>
1965 396 & L88	3007436	2nd Design Curved Neck	<b>32-955</b>	\$1,499 <sup>99</sup>
1965	-	1965 / 396 Early Restoration	<b>32-945</b>	\$1,499 <sup>99</sup>

## RESTORATION COPPER / BRASS RADIATORS

DeWitts™ restoration radiator for the 1966-68 Big Block Corvette GM# 3008567. This radiator includes a new 4 row copper core with correct factory-style top and bottom supports, including the square cutouts and center dimples. The 1967 model also includes the factory-style round holes in the top and bottom channels. New press-formed tanks, full rib pattern, "Fill Cold", "Harrison" embossments, along with the correct "MK" tag and GM part # makes this radiator 100% factory correct.

Model Year	Details		Price
1966	1966 Big Block Corvette Copper/ Brass Radiator (Manual)	<b>32-BC66M</b>	\$1,499 <sup>99</sup>
1967-1968	1967-1968 Big Block Corvette Copper/ Brass Radiator (Manual)	<b>32-BC67M</b>	\$1,499 <sup>99</sup>



For more information about the history and details of construction on our Restoration Radiators™, please visit [www.DeWitts.com](http://www.DeWitts.com).

# SURGE TANK

## DATED / NON-DATED CORVETTE SURGE TANKS

Our aluminum surge tanks are reproduced with the same tooling and dies that were used by Harrison during the production years. They are 100% correct in every detail and will pass the highest-level judging. The early tanks (32-400 and 32-401) feature the "pressed in" tubes, which are welded in from the inside, just like they were from the factory. The later versions feature the tubes heli-arc welded. Each tank from the factory was date coded with the "year/month" format. The tanks are offered in both dated and non-dated service parts.



32-421



32-421B

### Date Coded

1961-1962 Corvette Surge Tank - Date Coded	<b>32-400</b>	\$329 <sup>99</sup>
1963-1964 Corvette Surge Tank - Date Coded	<b>32-401</b>	\$329 <sup>99</sup>
1965-1967 Corvette Surge Tank - Date Coded	<b>32-402</b>	\$329 <sup>99</sup>
1968-1972 Corvette Surge Tank - Date Coded	<b>32-403</b>	\$329 <sup>99</sup>

*\*Please supply your model year and last 6 digits of your VIN when ordering.*

### Non-Dated

1961-1962 Corvette Surge Tank - Non-Dated		<b>32-420</b>	\$299 <sup>99</sup>
1961-1962 Corvette Surge Tank - Non-Dated	Black Painted	<b>32-420B</b>	\$314 <sup>99</sup>
1963-1967 Corvette Surge Tank - Non-Dated		<b>32-421</b>	\$299 <sup>99</sup>
1963-1967 Corvette Surge Tank - Non-Dated	Black Painted	<b>32-421B</b>	\$314 <sup>99</sup>
1968-1972 Corvette Surge Tank - Non-Dated		<b>32-422</b>	\$299 <sup>99</sup>
1968-1972 Corvette Surge Tank - Non-Dated	Black Painted	<b>32-422B</b>	\$314 <sup>99</sup>

# BB CORVETTE SURGE TANK

## 1969-72 BRASS

New reproduction brass/copper radiator expansion tank for 1969-72 big block engines with AC option only. Date tag and cap are sold separately. Shown in black for display only, tank is sold in raw copper.



Surge Tank	<b>32-419</b>	\$444 <sup>99</sup>
------------	---------------	---------------------

# 1960-61 TANK BRACKETS

Side brackets for our 940 top tank aluminum radiator. This kit includes two mounting brackets, four die-cut rubber cushions, and mounting hardware.



1960-1961	<b>32-440</b>	\$209 <sup>99</sup>
-----------	---------------	---------------------



32-1139055M

## 1955-60 CORVETTE



This aluminum radiator is the ONLY true “Direct Fit®” radiator on the market. It features the correct “press-formed” aluminum tanks and factory-type side brackets. It doubles the cooling capacity and weighs only 12lbs.



32-6239055M

## CORVETTE 1955-60 **LS** MODIFIED



This radiator is a “custom package” for all 1955-60 Corvettes with LS engines with manual or automatic transmissions. Inlet and outlet are on the passenger side, filler neck moved to the driver side. This radiator features factory-type press-formed end tanks, dual row core, and serpentine fins. This radiator will provide 40% more cooling over the stock copper radiator. Features single 16” SPAL high performance fan. It is epoxy-free and will fit into the stock core support. Radiator comes with 2 rows of 1” tubes, SPAL fan, billet DeWitts™ cap, temp sensor in the radiator, steam line, relay, and wiring.

### DeWitts™ Direct Fit® Pro-Series (2 Row 1" Tubes)

	Natural	Black Ice
Automatic	<b>32-1139055A</b> \$999.99	<b>32-1239055A</b> \$1,149.99
Manual	<b>32-1139055M</b> \$899.99	<b>32-1239055M</b> \$1,049.99
Fan Combo / Auto ('55-'57)	<b>32-4139055A</b> \$1,389.99	<b>32-4239055A</b> \$1,539.99
Fan Combo / Man. ('55-'57)	<b>32-4139055M</b> \$1,289.99	<b>32-4239055M</b> \$1,439.99
Fan Combo / Auto ('58-'60)*	<b>32-4139058A</b> \$1,389.99	<b>32-4239058A</b> \$1,539.99
Fan Combo / Man. ('58-'60)*	<b>32-4139058M</b> \$1,289.99	<b>32-4239058M</b> \$1,439.99

### DeWitts™ HP Series (2 Row 1.25" Tubes)

	Natural	Black Ice
	<b>32-1149055A</b> \$1,199.99	<b>32-1249055A</b> \$1,349.99
	<b>32-1149055M</b> \$1,099.99	<b>32-1249055M</b> \$1,249.99
	<b>32-4149055A</b> \$1,589.99	<b>32-4249055A</b> \$1,739.99
	<b>32-4149055M</b> \$1,489.99	<b>32-4249055M</b> \$1,639.99
	<b>32-4149058A</b> \$1,589.99	<b>32-4249058A</b> \$1,739.99
	<b>32-4149058M</b> \$1,489.99	<b>32-4249058M</b> \$1,639.99

### DeWitts™ **LS** Modified Pro-Series

LS Series Rad / Auto	<b>32-3139055A</b> \$1,074.99	<b>32-3239055A</b> \$1,224.99
LS Series Rad / Man.	<b>32-3139055M</b> \$974.99	<b>32-3239055M</b> \$1,124.99
LS Series Combo / Auto	<b>32-6139055A</b> \$1,499.99	<b>32-6239055A</b> \$1,649.99
LS Series Combo / Man.	<b>32-6139055M</b> \$1,399.99	<b>32-6239055M</b> \$1,549.99

### DeWitts™ **LS** HP Series

	<b>32-3149055A</b> \$1,274.99	<b>32-3249055A</b> \$1,424.99
	<b>32-3149055M</b> \$1,174.99	<b>32-3249055M</b> \$1,324.99
	<b>32-6149055A</b> \$1,699.99	<b>32-6249055A</b> \$1,849.99
	<b>32-6149055M</b> \$1,599.99	<b>32-6249055M</b> \$1,749.99

\*Due to the fan motor size, there may be interference with the factory suspension on 1958-60 model Corvettes. This package should only be used on cars with alternator conversions.

Note: All HP Series use thicker lower tank, may interfere with sway bar and core support.







## 1961-62 CORVETTE



Features a double row (1.0" tubes) core and the same cast aluminum necks used on the original radiator. It will fit into the core support without any modifications and it offers 25% more cooling than replacement copper/brass radiators.



32-1139061M

## CORVETTE 1961-62 **LS** MODIFIED



This radiator is a "custom package" for all 1961-62 Corvettes with LS engines with manual or automatic transmissions. Inlet and outlet are on the passenger side, filler neck, stem line, and temperature switch on passenger side. This radiator features formed end tanks, dual row core, and serpentine fins. This radiator will provide 40% more cooling over the stock copper radiator. Features single 16" SPAL high performance fan. It is epoxy-free and will fit into the stock core support. Radiator comes with 2 rows of 1" tubes, SPAL fan, billet DeWitts™ cap, temp sensor in the radiator, steam line, relay, and wiring. This model has a filler neck on the radiator, which eliminates the stock Harrison overflow tank.



32-6239061M

### DeWitts™ Direct Fit® Pro-Series (2 Row 1" Tubes)

	Natural	Black Ice
Automatic	<b>32-1139061A</b> \$884.99	<b>32-1239061A</b> \$1,034.99
Manual	<b>32-1139061M</b> \$784.99	<b>32-1239061M</b> \$934.99
Fan Combo / Auto	<b>32-4139061A</b> \$1,274.99	<b>32-4239061A</b> \$1,424.99
Fan Combo / Man.	<b>32-4139061M</b> \$1,174.99	<b>32-4239061M</b> \$1,324.99

### DeWitts™ HP Series (2 Row 1.25" Tubes)

	Natural	Black Ice
<b>32-1149061A</b>	\$1,084.99	<b>32-1249061A</b> \$1,234.99
<b>32-1149061M</b>	\$984.99	<b>32-1249061M</b> \$1,134.99
<b>32-4149061A</b>	\$1,474.99	<b>32-4249061A</b> \$1,624.99
<b>32-4149061M</b>	\$1,374.99	<b>32-4249061M</b> \$1,524.99

### DeWitts™ LS Modified Pro-Series

LS Series Rad / Auto	<b>32-3139061A</b> \$959.99	<b>32-3239061A</b> \$1,109.99
LS Series Rad / Man.	<b>32-3139061M</b> \$859.99	<b>32-3239061M</b> \$1,009.99
LS Series Combo / Auto	<b>32-6139061A</b> \$1,384.99	<b>32-6239061A</b> \$1,534.99
LS Series Combo / Man.	<b>32-6139061M</b> \$1,284.99	<b>32-6239061M</b> \$1,434.99

### DeWitts™ LS HP Series

<b>32-3149061A</b>	\$1,159.99	<b>32-3249061A</b> \$1,309.99
<b>32-3149061M</b>	\$1,059.99	<b>32-3249061M</b> \$1,209.99
<b>32-6149061A</b>	\$1,584.99	<b>32-6249061A</b> \$1,734.99
<b>32-6149061M</b>	\$1,484.99	<b>32-6249061M</b> \$1,634.99



32-1139063M

## 1963-72 CORVETTE



This double row aluminum radiator is offered as an alternate to the original plate type (941) radiator. While its BTU rating (4100) is slightly less than the original, it is still 25% better than the copper replacement radiators. The design uses many of the same original parts used in the factory design, including the inlet and outlet tank.



32-6239063M

## CORVETTE 1963-72 **LS** MODIFIED



This radiator is a “custom package” for all 1963-72 Corvettes with LS engines with manual and automatic transmissions. This radiator is made to fit the original SB core support. The radiator features pin mounts on the bottom and a loop on the top middle of radiator. Inlet and outlet are on the passenger side, filler neck, stem line, and temperature switch on passenger side. This radiator features formed end tanks, dual row core, and serpentine fins. This radiator will provide 40% more cooling over the stock copper radiator. Features a single 16” SPAL high performance fan. It is epoxy-free and will fit into the stock core support. Radiator comes with 2 rows of 1” tubes, SPAL fan, billet DeWitts™ cap, temp sensor in the radiator, steam line, relay, and wiring. This model has a filler neck on the radiator, which eliminates the stock Harrison overflow tank.

### DeWitts™ Direct Fit® Pro-Series (2 Row 1" Tubes)

	Natural	Black Ice
Automatic	<b>32-1139063A</b> \$884.99	<b>32-1239063A</b> \$1,034.99
Manual	<b>32-1139063M</b> \$784.99	<b>32-1239063M</b> \$934.99
Fan Combo / Auto	<b>32-4139063A</b> \$1,274.99	<b>32-4239063A</b> \$1,424.99
Fan Combo / Man.	<b>32-4139063M</b> \$1,174.99	<b>32-4239063M</b> \$1,324.99

### DeWitts™ HP Series (2 Row 1.25" Tubes)

	Natural	Black Ice
	<b>32-1149063A</b> \$1,084.99	<b>32-1249063A</b> \$1,234.99
	<b>32-1149063M*</b> \$984.99	<b>32-1249063M*</b> \$1,134.99
	<b>32-4149063A</b> \$1,474.99	<b>32-4249063A</b> \$1,624.99
	<b>32-4149063M</b> \$1,374.99	<b>32-4249063M</b> \$1,524.99

### DeWitts™ **LS** Modified Pro-Series

LS Series Rad / Auto	<b>32-3139063A</b> \$959.99	<b>32-3239063A</b> \$1,109.99
LS Series Rad / Man.	<b>32-3139063M</b> \$859.99	<b>32-3239063M</b> \$1,009.99
LS Series Combo / Auto	<b>32-6139063A</b> \$1,384.99	<b>32-6239063A</b> \$1,534.99
LS Series Combo / Man.	<b>32-6139063M</b> \$1,284.99	<b>32-6239063M</b> \$1,434.99

### DeWitts™ **LS** HP Series

	<b>32-3149063A</b> \$1,159.99	<b>32-3249063A</b> \$1,309.99
	<b>32-3149063M</b> \$1,059.99	<b>32-3249063M</b> \$1,209.99
	<b>32-6149063A</b> \$1,584.99	<b>32-6249063A</b> \$1,734.99
	<b>32-6149063M</b> \$1,484.99	<b>32-6249063M</b> \$1,634.99

See SPAL category model SP004 for add-on fan kit on page 42.

\*A great choice for cars with AC and modified motors.

Notes: this “pin mount” type radiator was used on all ‘63-’67 SB Corvettes. It was also used on ‘68-’72 SB base cars with no automatic transmission, AC, or optional engines.

# CORVETTE 1963-72 SB **LS** MODIFIED

This radiator is custom-made to simplify a LS series engine conversion on 1963-72 Corvettes. First, we moved the inlet and outlet to the passenger side. These connections are resized to match the ports on the LS engine. Second, we added a filler neck for a direct-mounted radiator cap, which eliminates the need for a separate surge tank. We even added a connection for the steam line. This radiator is designed to fit the original small block (pin mount) core support and it will eliminate the stock upper mounting bracket. This larger package will fill 100% of the core support opening with functioning core area while the end tanks are on each side behind the support. Pre-mounted to the radiator are SPAL dual 11" electric fans, providing 2720 CFM airflow. This will eliminate the factory fan and fan shroud. The fans will be controlled via a 195on/175off temperature switch, which we mount inside the end tank. Wiring harnesses, relays, and wiring instructions are also included.



32-6239024M

1963-65 Corvette Small Block Support - pins on the bottom and bosses on front bolt to support instead of top middle bracket.								
DeWitts™ Direct Fit® Pro-Series (2 Row 1" Tubes)				DeWitts™ HP Series (2 Row 1.25" Tubes)				
Natural		Black Ice		Natural		Black Ice		
Fan Combo / Auto	<b>32-4139024A</b>	\$1,439.99	<b>32-4239024A</b>	\$1,589.99	<b>32-4149024A</b>	\$1,639.99	<b>32-4249024A</b>	\$1,789.99
Fan Combo / Man.	<b>32-4139024M</b>	\$1,339.99	<b>32-4239024M</b>	\$1,489.99	<b>32-4149024M</b>	\$1,539.99	<b>32-4249024M</b>	\$1,689.99
DeWitts™ LS Modified Pro-Series				DeWitts™ LS HP Series				
LS Series Combo / Auto	<b>32-6139024A</b>	\$1,564.99	<b>32-6239024A</b>	\$1,714.99	<b>32-6149024A</b>	\$1,764.99	<b>32-6249024A</b>	\$1,914.99
LS Series Combo / Man.	<b>32-6139024M</b>	\$1,464.99	<b>32-6239024M</b>	\$1,614.99	<b>32-6149024M</b>	\$1,664.99	<b>32-6249024M</b>	\$1,814.99

*Note: The horn relay and voltage regulator must be relocated on 1963 models.*

1966-67 Corvette Small Block Support - pins on the bottom and tabs on sides to bolt to support instead of top middle bracket.								
DeWitts™ Direct Fit® Pro-Series (2 Row 1" Tubes)				DeWitts™ HP Series (2 Row 1.25" Tubes)				
Natural		Black Ice		Natural		Black Ice		
Fan Combo / Auto	<b>32-4139025A</b>	\$1,439.99	<b>32-4239025A</b>	\$1,589.99	<b>32-4149025A</b>	\$1,639.99	<b>32-4249025A</b>	\$1,789.99
Fan Combo / Man.	<b>32-4139025M</b>	\$1,339.99	<b>32-4239025M</b>	\$1,489.99	<b>32-4149025M</b>	\$1,539.99	<b>32-4249025M</b>	\$1,689.99
DeWitts™ LS Modified Pro-Series				DeWitts™ LS HP Series				
LS Series Combo / Auto	<b>32-6139025A</b>	\$1,564.99	<b>32-6239025A</b>	\$1,714.99	<b>32-6149025A</b>	\$1,764.99	<b>32-6249025A</b>	\$1,914.99
LS Series Combo / Man.	<b>32-6139025M</b>	\$1,464.99	<b>32-6239025M</b>	\$1,614.99	<b>32-6149025M</b>	\$1,664.99	<b>32-6249025M</b>	\$1,814.99

1969-72 Corvette Small Block Support - pins on the bottom and tabs on sides to bolt to support instead of top middle bracket, base cars only.								
DeWitts™ Direct Fit® Pro-Series (2 Row 1" Tubes)				DeWitts™ HP Series (2 Row 1.25" Tubes)				
Natural		Black Ice		Natural		Black Ice		
Fan Combo / Auto	<b>32-4139026A</b>	\$1,439.99	<b>32-4239026A</b>	\$1,589.99	<b>32-4149026A</b>	\$1,639.99	<b>32-4249026A</b>	\$1,789.99
Fan Combo / Man.	<b>32-4139026M</b>	\$1,339.99	<b>32-4239026M</b>	\$1,489.99	<b>32-4149026M</b>	\$1,539.99	<b>32-4249026M</b>	\$1,689.99
DeWitts™ LS Modified Pro-Series				DeWitts™ LS HP Series				
LS Series Combo / Auto	<b>32-6139026A</b>	\$1,724.99	<b>32-6239026A</b>	\$1,874.99	<b>32-6149026A</b>	\$1,924.99	<b>32-6249026A</b>	\$2,074.99
LS Series Combo / Man.	<b>32-6139026M</b>	\$1,624.99	<b>32-6239026M</b>	\$1,774.99	<b>32-6149026M</b>	\$1,824.99	<b>32-6249026M</b>	\$1,974.99

*Note: Model: 32-6139026M (Natural/Manual) is for 1969-72 small block base motor, no air, no auto. Used with the pin mount radiator core support and Harrison overflow tank. If your car has air, auto, and higher HP, use model 32-6139070M.*



32-1139065M

## 1965 BIG BLOCK CORVETTE

Replacement aluminum radiator for 1965 big block engines. Also fits '67-'69 L88 cars.

DeWitts™ Direct Fit® Pro-Series (2 Row 1" Tubes)			
	Natural	Black Ice	

DeWitts™ HP Series (2 Row 1.25" Tubes)			
	Natural	Black Ice	

Manual	<b>32-1139065M</b>	\$784.99	<b>32-1239065M</b>	\$934.99
Fan Combo / Man.	<b>32-4139065M</b>	\$1,174.99	<b>32-4239065M</b>	\$1,324.99

	<b>32-1149065M</b>	\$984.99	<b>32-1249065M</b>	\$1,134.99
	<b>32-4149065M</b>	\$1,374.99	<b>32-4249065M</b>	\$1,524.99



32-1139066M

## 1966-68 BIG BLOCK CORVETTE

(Also fits: '68 SB with Auto or AC)



DeWitts™ manufactures a high performance two row aluminum radiator that is a "Direct Fit®" for all '66-'68 big block Corvettes. **This model also fits 1968 small block engines that were equipped with automatic trans or AC.** This radiator will provide 25% more cooling than the stock four row copper radiator. It features the same size and configuration inlet and outlet, factory-type channels, and press-formed end tanks. No modifications are required. Models 32-1139066M & 32-1139066A are our standard design core with two 1" tubes and serpentine fins at 15 FPI.



32-6239066M

## CORVETTE 1966-68 BB **LS** MODIFIED

This radiator is a "custom package" for all 1966-68 BB Corvettes with LS engines. Inlet and outlet are on the passenger side. This radiator features factory-type press-formed end tanks, dual row core, and serpentine fins. This radiator will provide 30% more cooling than the stock copper unit and half the weight. Features dual 11" SPAL fans with 2720 CFM. It is epoxy-free and will fit into the stock core support. Radiator comes with 2 rows of 1" tubes, SPAL fan, billet DeWitts™ cap, temp sensor in the radiator, steam line, relay, and wiring.

DeWitts™ Direct Fit® Pro-Series (2 Row 1" Tubes)			
	Natural	Black Ice	

DeWitts™ HP Series (2 Row 1.25" Tubes)			
	Natural	Black Ice	

Automatic	<b>32-1139066A</b>	\$884.99	<b>32-1239066A</b>	\$1,034.99
Manual	<b>32-1139066M</b>	\$784.99	<b>32-1239066M</b>	\$934.99
Fan Combo / Auto	<b>32-4139066A</b>	\$1,439.99	<b>32-4239066A</b>	\$1,589.99
Fan Combo / Man.	<b>32-4139066M</b>	\$1,339.99	<b>32-4239066M</b>	\$1,489.99

	<b>32-1149066A</b>	\$1,084.99	<b>32-1249066A</b>	\$1,234.99
	<b>32-1149066M</b>	\$984.99	<b>32-1249066M</b>	\$1,134.99
	<b>32-4149066A</b>	\$1,639.99	<b>32-4249066A</b>	\$1,789.99
	<b>32-4149066M</b>	\$1,539.99	<b>32-4249066M</b>	\$1,689.99

DeWitts™ <b>LS</b> Modified Pro-Series			
--	--	--	--

DeWitts™ <b>LS</b> HP Series			
------------------------------	--	--	--

LS Series Rad / Auto	<b>32-3139066A</b>	\$959.99	<b>32-3239066A</b>	\$1,109.99
LS Series Rad / Man.	<b>32-3139066M</b>	\$859.99	<b>32-3239066M</b>	\$1,009.99
LS Series Combo / Auto	<b>32-6139066A</b>	\$1,564.99	<b>32-6239066A</b>	\$1,714.99
LS Series Combo / Man.	<b>32-6139066M</b>	\$1,464.99	<b>32-6239066M</b>	\$1,614.99

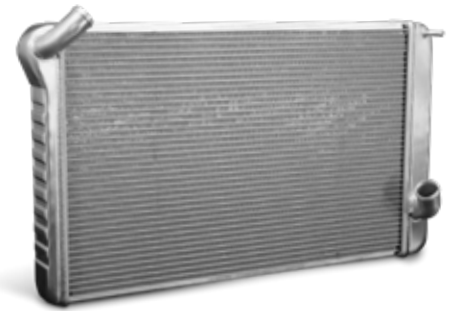
	<b>32-3149066A</b>	\$1,159.99	<b>32-3249066A</b>	\$1,309.99
	<b>32-3149066M</b>	\$1,059.99	<b>32-3249066M</b>	\$1,209.99
	<b>32-6149066A</b>	\$1,764.99	<b>32-6249066A</b>	\$1,914.99
	<b>32-6149066M</b>	\$1,664.99	<b>32-6249066M</b>	\$1,814.99

See SPAL category model SP006 for add-on fan kit on page 41.

# 1969-72 BIG BLOCK CORVETTE



This is a true "Direct Fit®" aluminum radiator for 1969-72 big block engine Corvettes. Unlike other "universal" aftermarket radiators, this model features the correct 27.5" core, factory-type upper channels, stock hose connections, and press-formed tanks. It is also epoxy-free. No cutting or modifying is required. This radiator features two rows of one-inch-wide tubes and will provide 30% more cooling than an equal size four row copper radiator.



32-1139069M

# CORVETTE 1969-72 BB ALL **LS** MODIFIED

This radiator is a "custom package" for all 1969-72 BB Corvettes with manual or automatic transmissions. Inlet and outlet are on the passenger side. This radiator features factory-type press-formed end tanks, dual row core, and serpentine fins. This radiator will provide 30% more cooling than the stock copper unit and half the weight. Features dual 11" SPAL fans with 2720 CFM. It is epoxy-free and will fit into the stock core support. Radiator comes with 2 rows of 1" tubes, SPAL fan, billet DeWitts™ cap, temp sensor in the radiator, steam line, relay, and wiring.



32-6239073A

### DeWitts™ Direct Fit® Pro-Series (2 Row 1" Tubes)

	Natural		Black Ice	
Automatic	<b>32-1139069A</b>	\$884.99	<b>32-1239069A</b>	\$1,034.99
Manual	<b>32-1139069M</b>	\$784.99	<b>32-1239069M</b>	\$934.99
Fan Combo / Auto	<b>32-4139069A</b>	\$1,439.99	<b>32-4239069A</b>	\$1,589.99
Fan Combo / Man.	<b>32-4139069M</b>	\$1,339.99	<b>32-4239069M</b>	\$1,489.99

### DeWitts™ HP Series (2 Row 1.25" Tubes)

	Natural		Black Ice	
	<b>32-1149069A</b>	\$1,084.99	<b>32-1249069A</b>	\$1,234.99
	<b>32-1149069M</b>	\$984.99	<b>32-1249069M</b>	\$1,134.99
	<b>32-4149069A</b>	\$1,639.99	<b>32-4249069A</b>	\$1,789.99
	<b>32-4149069M</b>	\$1,539.99	<b>32-4249069M</b>	\$1,689.99

### DeWitts™ **LS** Modified Pro-Series

LS Series Rad / Auto	<b>32-3139073A</b>	\$959.99	<b>32-3239073A</b>	\$1,109.99
LS Series Rad / Man.	<b>32-3139073M</b>	\$859.99	<b>32-3239073M</b>	\$1,009.99
LS Series Combo / Auto	<b>32-6139073A</b>	\$1,564.99	<b>32-6239073A</b>	\$1,714.99
LS Series Combo / Man.	<b>32-6139073M</b>	\$1,464.99	<b>32-6239073M</b>	\$1,614.99

### DeWitts™ **LS** HP Series

	<b>32-3149073A</b>	\$1,159.99	<b>32-3249073A</b>	\$1,309.99
	<b>32-3149073M</b>	\$1,059.99	<b>32-3249073M</b>	\$1,209.99
	<b>32-6149073A</b>	\$1,764.99	<b>32-6249073A</b>	\$1,914.99
	<b>32-6149073M</b>	\$1,664.99	<b>32-6249073M</b>	\$1,814.99



Visit our website for additional information and tech tips.

**WWW.DEWITTS.COM**





32-1139070A

## 1969-72 SMALL BLOCK CORVETTE



This radiator is for all 1969-72 350 small block Corvettes with automatic transmission or AC. This "Direct Fit®" aluminum radiator features factory-type press-formed end tanks, dual row core, serpentine fins, and the factory-type upper and lower channels. This radiator will provide 30% more cooling than the stock copper unit with half the weight and is epoxy-free. It will fit into the stock core support and uses the original factory hoses. No modifications are required. **(Also fits LT1 & L46 option cars.)**



32-6239070A

## CORVETTE 1969-72 **LS** MODIFIED

This is a custom LS engine conversion radiator for all 1969-72 Corvettes with 26" core support and manual transmission. Inlet and outlet are on the passenger side and sized to match the LS engine. This radiator features factory-type press-formed end tanks, dual row core, and serpentine fins. This radiator will provide 30% more cooling than the stock copper unit and half the weight. It is also epoxy-free.

### DeWitts™ Direct Fit® Pro-Series (2 Row 1" Tubes)

	Natural	Black Ice
Automatic	<b>32-1139070A</b> \$884.99	<b>32-1239070A</b> \$1,034.99
Manual	<b>32-1139070M</b> \$784.99	<b>32-1239070M</b> \$934.99
Fan Combo / Auto	<b>32-4139070A</b> \$1,439.99	<b>32-4239070A</b> \$1,589.99
Fan Combo / Man.	<b>32-4139070M</b> \$1,339.99	<b>32-4239070M</b> \$1,489.99

### DeWitts™ HP Series (2 Row 1.25" Tubes)

	Natural	Black Ice
	<b>32-1149070A</b> \$1,084.99	<b>32-1249070A</b> \$1,234.99
	<b>32-1149070M</b> \$984.99	<b>32-1249070M</b> \$1,134.99
	<b>32-4149070A</b> \$1,639.99	<b>32-4249070A</b> \$1,789.99
	<b>32-4149070M</b> \$1,539.99	<b>32-4249070M</b> \$1,689.99

### DeWitts™ **LS** Modified Pro-Series

LS Series Rad / Auto	<b>32-3139070A</b> \$959.99	<b>32-3239070A</b> \$1,109.99
LS Series Rad / Man.	<b>32-3139070M</b> \$859.99	<b>32-3239070M</b> \$1,009.99
LS Series Combo / Auto	<b>32-6139070A</b> \$1,564.99	<b>32-6239070A</b> \$1,714.99
LS Series Combo / Man.	<b>32-6139070M</b> \$1,464.99	<b>32-6239070M</b> \$1,614.99

### DeWitts™ **LS** HP Series

	<b>32-3149070A</b> \$1,159.99	<b>32-3249070A</b> \$1,309.99
	<b>32-3149070M</b> \$1,059.99	<b>32-3249070M</b> \$1,209.99
	<b>32-6149070A</b> \$1,764.99	<b>32-6249070A</b> \$1,914.99
	<b>32-6149070M</b> \$1,664.99	<b>32-6249070M</b> \$1,814.99

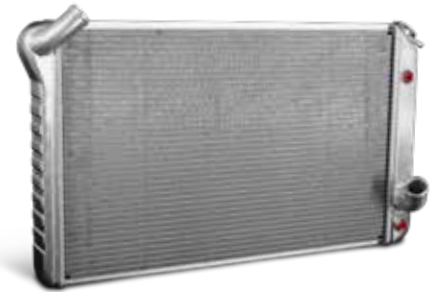




## 1973-76 CORVETTE



This "Direct Fit™" aluminum radiator features factory-type press-formed end tanks, dual row core, serpentine fins, and the factory-type upper and lower channels. This radiator will provide 30% more cooling than the stock copper unit with half the weight and is epoxy-free. It will fit into the stock core support and uses the original factory hoses. Note: Late 1976 cars may require the 1977 style radiator. Call for recommendation.



32-1139073A

## CORVETTE 1973-76 BB ALL **LS** MODIFIED

This radiator is a "custom package" for all 1973-76 BB Corvettes with manual or automatic transmissions. Inlet and outlet are on the passenger side. This radiator features factory-type press-formed end tanks, dual row core, and serpentine fins. This radiator will provide 30% more cooling than the stock copper unit and half the weight. Features dual 11" SPAL fans with 2720 CFM. It is epoxy-free and will fit into the stock core support. Radiator comes with 2 rows of 1" tubes, SPAL fan, billet DeWitts™ cap, temp sensor in the radiator, steam line, relay, and wiring.



32-6239073A

### DeWitts™ Direct Fit® Pro-Series (2 Row 1" Tubes)

	Natural		Black Ice	
Automatic	<b>32-1139073A</b>	\$884.99	<b>32-1239073A</b>	\$1,034.99
Manual	<b>32-1139073M</b>	\$784.99	<b>32-1239073M</b>	\$934.99
Fan Combo / Auto	<b>32-4139073A</b>	\$1,439.99	<b>32-4239073A</b>	\$1,589.99
Fan Combo / Man.	<b>32-4139073M</b>	\$1,339.99	<b>32-4239073M</b>	\$1,489.99

### DeWitts™ HP Series (2 Row 1.25" Tubes)

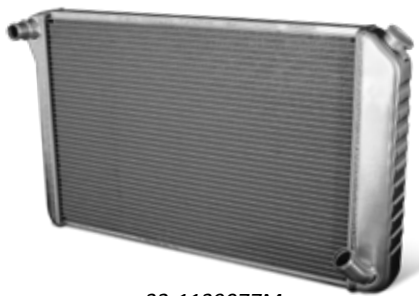
	Natural		Black Ice	
	<b>32-1149073A</b>	\$1,084.99	<b>32-1249073A</b>	\$1,234.99
	<b>32-1149073M</b>	\$984.99	<b>32-1249073M</b>	\$1,134.99
	<b>32-4149073A</b>	\$1,639.99	<b>32-4249073A</b>	\$1,789.99
	<b>32-4149073M</b>	\$1,539.99	<b>32-4249073M</b>	\$1,689.99

### DeWitts™ **LS** Modified Pro-Series

LS Series Rad / Auto	<b>32-3139073A</b>	\$959.99	<b>32-3239073A</b>	\$1,109.99
LS Series Rad / Man.	<b>32-3139073M</b>	\$859.99	<b>32-3239073M</b>	\$1,009.99
LS Series Combo / Auto	<b>32-6139073A</b>	\$1,564.99	<b>32-6239073A</b>	\$1,714.99
LS Series Combo / Man.	<b>32-6139073M</b>	\$1,464.99	<b>32-6239073M</b>	\$1,614.99

### DeWitts™ **LS** HP Series

	<b>32-3149073A</b>	\$1,159.99	<b>32-3249073A</b>	\$1,309.99
	<b>32-3149073M</b>	\$1,059.99	<b>32-3249073M</b>	\$1,209.99
	<b>32-6149073A</b>	\$1,764.99	<b>32-6249073A</b>	\$1,914.99
	<b>32-6149073M</b>	\$1,664.99	<b>32-6249073M</b>	\$1,814.99



32-1139077M

## 1977-82 CORVETTE



This "Direct Fit" aluminum radiator features factory-type press-formed end tanks, dual row core, serpentine fins, and the factory-type upper and lower channels. This radiator will provide 30% more cooling than the stock copper unit with half the weight and is epoxy-free. It will fit into the stock core support and uses the original factory hoses. Heavy duty rubber cushions are included. Fits all '77-'82 Corvettes with automatic and manual transmissions.



32-6239077A

## CORVETTE 1977-82 **LS** MODIFIED

This radiator is a "custom package" for all 1977-82 Corvette LS models with manual or automatic transmissions. Inlet and outlet are on the passenger side. This radiator features factory-type press-formed end tanks, dual row core, and serpentine fins. This radiator will provide 30% more cooling than the stock copper unit and half the weight. Features dual 11" SPAL fans with 2720 CFM. It is epoxy-free and will fit into the stock core support. Radiator comes with 2 rows of 1" tubes, SPAL fan, billet DeWitts cap, temp sensor in the radiator, steam line, relay, and wiring.

### DeWitts™ Direct Fit® Pro-Series (2 Row 1" Tubes)

	Natural		Black Ice	
Automatic	<b>32-1139077A</b>	\$884.99	<b>32-1239077A</b>	\$1,039.99
Manual	<b>32-1139077M</b>	\$784.99	<b>32-1239077M</b>	\$939.99
Fan Combo / Auto	<b>32-4139077A</b>	\$1,439.99	<b>32-4239077A</b>	\$1,589.99
Fan Combo / Man.	<b>32-4139077M</b>	\$1,339.99	<b>32-4239077M</b>	\$1,489.99

### DeWitts™ HP Series (2 Row 1.25" Tubes)

	Natural		Black Ice	
	<b>32-1149077A</b>	\$1,084.99	<b>32-1249077A</b>	\$1,239.99
	<b>32-1149077M</b>	\$984.99	<b>32-1249077M</b>	\$1,139.99
	<b>32-4149077A</b>	\$1,639.99	<b>32-4249077A</b>	\$1,789.99
	<b>32-4149077M</b>	\$1,539.99	<b>32-4249077M</b>	\$1,689.99

### DeWitts™ **LS** Modified Pro-Series

LS Series Rad / Auto	<b>32-3139077A</b>	\$959.99	<b>32-3239077A</b>	\$1,109.99
LS Series Rad / Man.	<b>32-3139077M</b>	\$859.99	<b>32-3239077M</b>	\$1,009.99
LS Series Combo / Auto	<b>32-6139077A</b>	\$1,564.99	<b>32-6239077A</b>	\$1,714.99
LS Series Combo / Man.	<b>32-6139077M</b>	\$1,464.99	<b>32-6239077M</b>	\$1,614.99

### DeWitts™ **LS** HP Series

	<b>32-3149077A</b>	\$1,159.99	<b>32-3249077A</b>	\$1,309.99
	<b>32-3149077M</b>	\$1,059.99	<b>32-3249077M</b>	\$1,209.99
	<b>32-6149077A</b>	\$1,764.99	<b>32-6249077A</b>	\$1,914.99
	<b>32-6149077M</b>	\$1,664.99	<b>32-6249077M</b>	\$1,814.99



# 1984-89 CORVETTE



Features two rows of 1" tubes and press-formed end tanks. This doubles the cooling capacity of the original single row units. This design eliminates failures due to cracked plastic end tanks and/or gasket leaks. This model fits both automatic transmission and 4 + 3 models. To simplify installation, custom mounting cushions are included. Note: 1984 & 1985 cars will require a newer-style AC condenser.



32-1139084A

Double Row Radiator / Automatic

32-1139084A

\$884<sup>99</sup>

The single row radiator features 1-1/2" tubes. This design increases cooling surfaces by 50% over the stock unit. This unit uses the same full-size aluminum end tanks from our double row, increasing fluid capacity.

Single Row Radiator / Automatic

32-1129084A

\$599<sup>99</sup>

# 1984-89 CORVETTE FAN KIT



Now you can upgrade the factory 1700 CFM with this high performance (1918 CFM) fan. Fan comes with a "Direct Fit" adapter plate, ready to bolt on and no cutting or splicing of wires is needed. We supply this fan with a harness-matching plug.



32-SP464

\$289<sup>99</sup>





32-1139090A

## 1990-96 CORVETTE



Features two rows of 1" tubes and press-formed end tanks. This doubles the cooling capacity of the original single row units. This unit fits into the original mounting, however, GM did not allow any room for a thicker core and therefore it is impossible to make a true "Direct Fit®". The upper two rubber cushions must be trimmed slightly to accommodate the larger core. We include spacer plates and hardware so no shroud cutting is required.

DeWitts™ Direct Fit® Pro-Series (2 Row 1" Tubes) / Automatic	<b>32-1139090A</b>	\$884 <sup>99</sup>
DeWitts™ Direct Fit® Pro-Series (2 Row 1" Tubes) / Manual	<b>32-1139090M</b>	\$784 <sup>99</sup>
DeWitts™ Direct Fit® Pro-Series (2 Row 1" Tubes) / Optional Oil Cooler	<b>32-1139090E</b>	\$884 <sup>99</sup>
+ Black Ice Coating / Automatic	<b>32-1239090A</b>	\$1,034 <sup>99</sup>
+ Dual SPAL Fan / Automatic	<b>32-3139090A</b>	\$959 <sup>99</sup>
+ Dual SPAL Fan / Manual	<b>32-3139090M</b>	\$859 <sup>99</sup>
DeWitts™ HP Series (2 Row 1.25" Tubes) / Automatic	<b>32-1149090A</b>	\$1,084 <sup>99</sup>

*Note: all 1990-1996 fan upgrades are listed in SPAL fan section #32-SP461 dual fan upgrade. These fan kits mount to factory shroud for a direct fit.*

The single row radiator features 1.5" tubes. This design increases cooling surfaces by 50% over the stock unit. This unit uses the same full-size aluminum end tanks from our double row, increasing fluid capacity.

### DeWitts™ Direct Fit® Single Row 1.5" Core Radiator

	Natural		Black Ice	
Automatic	<b>32-1129090A</b>	\$599.99	<b>32-1229090A</b>	\$749.99
Manual	<b>32-1129090M</b>	\$549.99	<b>32-1229090M</b>	\$699.99



32-SP461

## 1990-96 CORVETTE FAN KIT



Replace the factory fans with this 11" high performance SPAL puller fan. DeWitts™ has designed custom brackets for both factory single row cores and DeWitts™ "Direct Fit®" double row radiators. The evaporator mounting bracket must be modified, as this fan provides no supporting system.

DeWitts™ 2-Row Core	<b>32-SP461</b>	\$519 <sup>99</sup>
GM Single Row Core	<b>32-SP462</b>	\$519 <sup>99</sup>



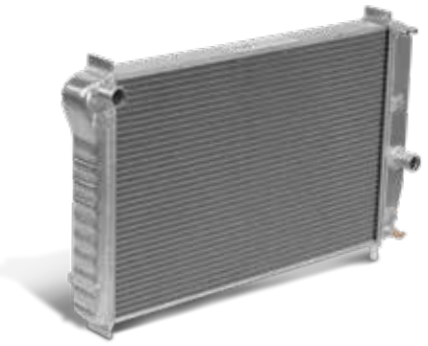
Visit our website for additional information and tech tips.

**WWW.DEWITTS.COM**



## C5 ALUMINUM RADIATOR

This high performance “Direct Fit®” aluminum radiator features two rows of 1” cooling tubes, doubling the cooling capacity of the factory single row. The press-formed aluminum end tanks are TIG-welded to the core, eliminating failures due to cracked plastic end tanks and/or gasket leaks. This unit fits into the original mounting and has all the factory connections.

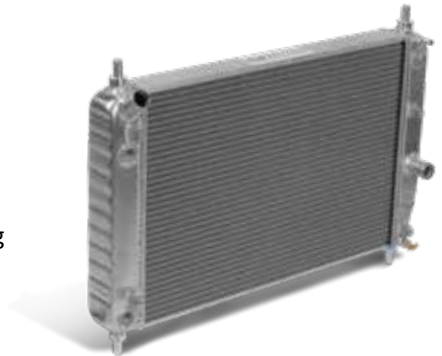


	1997-2004 Manual Transmission Radiator	<b>32-1139097M</b>	\$839 <sup>99</sup>
	1997-2000 Automatic Transmission Radiator	<b>32-1139097A</b>	\$939 <sup>99</sup>
	1997-2000 EOC / TOC Radiator	<b>32-1139097B</b>	\$989 <sup>99</sup>
	2001-2004 Automatic Transmission Radiator	<b>32-1139101A</b>	\$939 <sup>99</sup>
	2001-2004 EOC / TOC Radiator	<b>32-1139101B</b>	\$989 <sup>99</sup>
	EOC Radiator (Left Side Engine Oil Cooler)	<b>32-1139097E</b>	\$939 <sup>99</sup>
SHORT	1997-2004 Manual Transmission Radiator (See Note)	<b>32-1139197M</b>	\$839 <sup>99</sup>
SHORT	1997-2000 Automatic Transmission Radiator (See Note)	<b>32-1139197A</b>	\$939 <sup>99</sup>
SHORT	1997-2000 EOC / TOC Radiator (See Note)	<b>32-1139197B</b>	\$989 <sup>99</sup>
SHORT	EOC Radiator (Left Side Engine Oil Cooler) (See Note)	<b>32-1139197E</b>	\$839 <sup>99</sup>
SHORT	2001-2004 TOC Radiator (See Note)	<b>32-1139111A</b>	\$989 <sup>99</sup>
SHORT	2001-2004 EOC / TOC Radiator (See Note)	<b>32-1139111B</b>	\$1,039 <sup>99</sup>

*Note: DeWitts™ offers custom “short” models to provide extra clearance to make room for supercharger packages.*

## C6 ALUMINUM RADIATOR

This “Direct Fit®” radiator features two rows of 1” tubes, which doubles the cooling capacity of a factory single row. Our exclusive “press-formed” end tanks are hand TIG-welded by expert craftsman, eliminating the factory plastic tanks.



	Radiator With Dual Cooler (EOC & TOC)	<b>32-1139105B</b>	\$1,039 <sup>99</sup>
	No Cooler / NON-Z51 / Manual Transmission Only	<b>32-1139105M</b>	\$939 <sup>99</sup>
	Driver Side Oil Cooler (EOC) Radiator	<b>32-1139105E</b>	\$989 <sup>99</sup>
	Passenger Side Cooler (Automatics and All Z06 Options)	<b>32-1139105A</b>	\$989 <sup>99</sup>
	2009-2013 ZR1 Radiator	<b>32-1139109Z</b>	\$989 <sup>99</sup>
	2013 Z06, Z51, Grand Sport With Engine-mounted Oil Cooler	<b>32-1139105Z</b>	\$989 <sup>99</sup>
	2013 Corvette Combo Version With Engine-mounted Oil Cooler	<b>32-4139105Z</b>	\$1,489 <sup>99</sup>
SHORT	EOC & TOC Radiator	<b>32-1139125B</b>	\$1,139 <sup>99</sup>
SHORT	No Cooler / NON-Z51 / Manual Transmission Only (See Note)	<b>32-1139125M</b>	\$989 <sup>99</sup>
SHORT	EOC Radiator (See Note)	<b>32-1139125E</b>	\$1,089 <sup>99</sup>
SHORT	2005-2013 Z06/C6 Automatic Transmission Radiator (See Note)	<b>32-1139125A</b>	\$1,089 <sup>99</sup>
SHORT	2013 Z06, Z51, Grand Sport With Engine-mounted Oil Cooler	<b>32-1139125Z</b>	\$1,089 <sup>99</sup>
SHORT	2013 Corvette Combo Version With Engine-mounted Oil Cooler	<b>32-4139125Z</b>	\$1,499 <sup>99</sup>

*Note: DeWitts™ offers custom “short” models to provide extra clearance to make room for supercharger packages.*



## C7 Z06 ALUMINUM RADIATOR



Upgrade your cooling system with our new 57mm double row aluminum radiator for all C7 Corvettes. This new "Direct Fit®" radiator features serpentine fins and special dimpled cooling tubes. These dimples create turbulence as coolant passes through the tube. Turbulent flow is a proven method to increase heat transfer over the standard laminar flow method. The thicker core increases tube-to-fin surface area and the all-aluminum construction eliminates plastic end tanks and gasket failures. The larger capacity end tanks hold one additional gallon of coolant to help dissipate heat.

All C7 & Z06 Direct Fit®

**32-1139114M** \$1,099<sup>99</sup>

C7 Race Radiator Modification Required (See Note)

**32-1149114M** \$1,299<sup>99</sup>

*Note: DeWitts™ now offers our HP Model (32-1149114M) 70mm double row aluminum radiator for extreme racing conditions. This radiator requires trimming both the hood duct and electric fan shroud for proper clearance.*



## C7 19" ELECTRIC FAN UPGRADE



Our new 19" brushless fan is simple to install and features "plug and play" wiring. No re-programming or splicing is required. This fan replaces the stock 14" 600 watt fan with an impressive 835 watt fan motor for more CFM when you need it. The custom aluminum shroud now covers 100% of the core face, utilizing all the radiator area, and it looks incredible when showing off the engine bay! The stock hood duct is eliminated for clearance.

Scan this QR code to see a video explaining more about the C7 Corvette Electric Fan Upgrade!



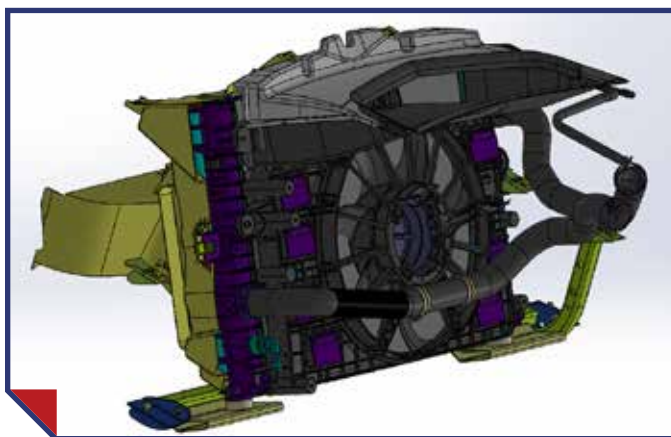
Fits All (Except 70mm radiator)

**32-SP477** \$999<sup>99</sup>

Fits DeWitts™ 70mm radiator

**32-SP478** \$999<sup>99</sup>

*Note: Image shows fan upgrade on DeWitts™ radiator. Radiator sold separately.*



**C7 CAD photo showing factory shrouding, fan, and hood scoop.**

The stock Corvette cooling system uses a single wide 38mm core with hood vent and 14" fan.



**CAD photo of DeWitts™ 32-1139114M and 32-SP477 fan upgrade.**

DeWitts™ "Direct Fit®" radiator features 2 rows of 1" dimpled tubes with low height fin. Our fan upgrade is a 19" fan with 850-watt motor designed to cover the whole radiator and eliminate the hood scoop.

## C7 Z06 AIR INTAKE HEAT EXCHANGER

Reduce intake temperatures with this efficient heat exchanger. The system holds more fluid in the heat exchanger with an increased tube-to-fin contact area. This allows the supercharger to be more efficient while in boost and cool down faster after high boost runs.



Heat Exchanger

32-9139007M

\$914<sup>99</sup>

Note: Removal of the front bumper and a car lift is required. DeWitts™ recommends contracting a professional service technician for installation.

## C7 AUXILIARY RADIATOR

A secondary radiator under the front fascia will provide additional cooling for high performance applications without coolant faults (limp mode). This new kit is for the manual transmission (M7) models only. Installation will require minor trimming to the interior duct and the lower deflector. Hoses, install accessories, cutting template, and instructions are included.



5 STAR  
CUSTOMER  
REVIEW



INSTALLATION VIDEO  
AND INSTRUCTIONS

C7 Auxiliary Radiator (M7 Models)

32-C7AUX

\$559<sup>99</sup>

## C7 Z06 ENGINE OIL COOLING KIT

This "Air-to-Oil" type EOC kit is for all C7 Corvettes. This kit includes a custom two pass oil cooler that is designed to be mounted directly behind the grill opening. This kit replaces the factory Water-to-Oil cooler with a custom adapter. Detailed installation instructions are included.



180 Degree Thermostat Kit

32-8119001ES180

\$1,099<sup>99</sup>

212 Degree Thermostat Kit

32-8119001ES212

\$1,099<sup>99</sup>



32-1139022M

## 1967-69 BIG BLOCK CAMARO



This is a true “Direct Fit®” aluminum radiator for 1967-69 Camaros with big block engines. Unlike other “universal” aftermarket radiators, this model features the factory-type upper channels, stock hose connections, and press-formed tanks. It is also epoxy-free. No cutting or modifying is required. This radiator features two rows of 1” wide tubes and will provide 30% more cooling than an equal size four row copper radiator.



32-6139022M

## CAMARO 1967-69 BB **LS** MODIFIED



This radiator is a “custom package” for all 1967-69 Camaros with LS engines with manual or automatic transmissions. Inlet and outlet are on the passenger side. This radiator features factory-type press-formed end tanks, dual row core, and serpentine fins. This radiator will provide 30% more cooling than the stock copper unit and half the weight. Features dual 11” SPAL fans with 2720 CFM. It is epoxy-free and will fit into the stock core support. Radiator comes with 2 rows of 1” tubes, dual fans, billet DeWitts™ cap, temp sensor in the radiator, steam line, relays, and wiring.

### DeWitts™ Direct Fit® Pro-Series (2 Row 1" Tubes)

	Natural	Black Ice
Automatic	<b>32-1139022A</b> \$859.99	<b>32-1239022A</b> \$1,009.99
Manual	<b>32-1139022M</b> \$759.99	<b>32-1239022M</b> \$909.99
Fan Combo / Auto	<b>32-4139022A</b> \$1,439.99	<b>32-4239022A</b> \$1,589.99
Fan Combo / Man.	<b>32-4139022M</b> \$1,339.99	<b>32-4239022M</b> \$1,489.99

### DeWitts™ HP Series (2 Row 1.25" Tubes)

	Natural	Black Ice
Automatic	<b>32-1149022A</b> \$1,059.99	<b>32-1249022A</b> \$1,209.99
Manual	<b>32-1149022M</b> \$959.99	<b>32-1249022M</b> \$1,109.99
Fan Combo / Auto	<b>32-4149022A</b> \$1,639.99	<b>32-4249022A</b> \$1,789.99
Fan Combo / Man.	<b>32-4149022M</b> \$1,539.99	<b>32-4249022M</b> \$1,689.99

### DeWitts™ **LS** Modified Pro-Series

LS Series Rad / Auto	<b>32-3139022A</b> \$934.99	<b>32-3239022A</b> \$1,084.99
LS Series Rad / Man.	<b>32-3139022M</b> \$834.99	<b>32-3239022M</b> \$984.99
LS Series Combo / Auto	<b>32-6139022A</b> \$1,544.99	<b>32-6239022A</b> \$1,694.99
LS Series Combo / Man.	<b>32-6139022M</b> \$1,444.99	<b>32-6239022M</b> \$1,594.99

### DeWitts™ **LS** HP Series

Automatic	<b>32-3149022A</b> \$1,134.99	<b>32-3249022A</b> \$1,284.99
Manual	<b>32-3149022M</b> \$1,034.99	<b>32-3249022M</b> \$1,184.99
Fan Combo / Auto	<b>32-6149022A</b> \$1,744.99	<b>32-6249022A</b> \$1,894.99
Fan Combo / Man.	<b>32-6149022M</b> \$1,644.99	<b>32-6249022M</b> \$1,794.99

Special 1969 COPO Radiator	<b>32-1139023M</b> \$759.99	<b>32-1239023M</b> \$909.99
----------------------------	-----------------------------	-----------------------------



32-1139004M

## 1967-69 SMALL BLOCK / Z28 CAMARO

This is a true “Direct Fit®” aluminum radiator for 1967-69 Camaros. Unlike other “universal” aftermarket radiators, this model features the factory-type upper channels, stock hose connections, and press-formed tanks. It is also epoxy-free. No cutting or modifying is required. This radiator features two rows of 1” wide tubes and will provide 30% more cooling than an equal size four row copper radiator.

### DeWitts™ Direct Fit® Pro-Series (2 Row 1" Tubes)

	Natural	Black Ice
Automatic	<b>32-1139004A</b> \$859.99	<b>32-1239004A</b> \$1,009.99
Manual	<b>32-1139004M</b> \$759.99	<b>32-1239004M</b> \$909.99
Fan Combo / Auto	<b>32-4139004A</b> \$1,254.99	<b>32-4239004A</b> \$1,404.99
Fan Combo / Man.	<b>32-4139004M</b> \$1,154.99	<b>32-4239004M</b> \$1,304.99

### DeWitts™ HP Series (2 Row 1.25" Tubes)

	Natural	Black Ice
Automatic	<b>32-1149004A</b> \$1,059.99	<b>32-1249004A</b> \$1,209.99
Manual	<b>32-1149004M</b> \$959.99	<b>32-1249004M</b> \$1,109.99
Fan Combo / Auto	<b>32-4149004A</b> \$1,454.99	<b>32-4249004A</b> \$1,604.99
Fan Combo / Man.	<b>32-4149004M</b> \$1,354.99	<b>32-4249004M</b> \$1,504.99

# 1970-81 CAMARO



This is a true “Direct Fit®” aluminum radiator for 1970-81 Camaros. Unlike other “universal” aftermarket radiators, this model features the factory-type upper channels, stock hose connections, and press-formed tanks. It is also epoxy-free. No cutting or modifying is required. This radiator features two rows of 1” wide tubes and will provide 30% more cooling than an equal size four row copper radiator.



32-1139005M

# CAMARO 1970-81 ALL **LS** MODIFIED

This radiator is a “custom package” for all 1970-81 Camaros with LS engines with manual or automatic transmissions. Inlet and outlet are on the passenger side. This radiator features factory-type press-formed end tanks, dual row core, and serpentine fins. This radiator will provide 30% more cooling than the stock copper unit and half the weight. Features dual 11” SPAL fans with 2720 CFM. It is epoxy-free and will fit into the stock core support. Radiator comes with 2 rows of 1” tubes, dual fans, billet DeWitts™ cap, temp sensor in the radiator, steam line, relays, and wiring.



32-6239005M

### DeWitts™ Direct Fit® Pro-Series (2 Row 1" Tubes)

	Natural	Black Ice
Automatic	<b>32-1139005A</b> \$859.99	<b>32-1239005A</b> \$1,009.99
Manual	<b>32-1139005M</b> \$759.99	<b>32-1239005M</b> \$909.99
Fan Combo / Auto	<b>32-4139005A</b> \$1,439.99	<b>32-4239005A</b> \$1,589.99
Fan Combo / Man.	<b>32-4139005M</b> \$1,339.99	<b>32-4239005M</b> \$1,489.99

### DeWitts™ HP Series (2 Row 1.25" Tubes)

	Natural	Black Ice
Automatic	<b>32-1149005A</b> \$1,059.99	<b>32-1249005A</b> \$1,209.99
Manual	<b>32-1149005M</b> \$959.99	<b>32-1249005M</b> \$1,109.99
Fan Combo / Auto	<b>32-4149005A</b> \$1,639.99	<b>32-4249005A</b> \$1,789.99
Fan Combo / Man.	<b>32-4149005M</b> \$1,539.99	<b>32-4249005M</b> \$1,689.99

### DeWitts™ LS Modified Pro-Series

LS Series Rad / Auto	<b>32-3139005A</b> \$934.99	<b>32-3239005A</b> \$1,084.99
LS Series Rad / Man.	<b>32-3139005M</b> \$834.99	<b>32-3239005M</b> \$984.99
LS Series Combo / Auto	<b>32-6139005A</b> \$1,544.99	<b>32-6239005A</b> \$1,694.99
LS Series Combo / Man.	<b>32-6139005M</b> \$1,444.99	<b>32-6239005M</b> \$1,594.99

### DeWitts™ LS HP Series

Automatic	<b>32-3149005A</b> \$1,134.99	<b>32-3249005A</b> \$1,284.99
Manual	<b>32-3149005M</b> \$1,034.99	<b>32-3249005M</b> \$1,184.99
Fan Combo / Auto	<b>32-6149005A</b> \$1,744.99	<b>32-6249005A</b> \$1,894.99
Fan Combo / Man.	<b>32-6149005M</b> \$1,644.99	<b>32-6249005M</b> \$1,794.99

# 1982-92 CAMARO



This high performance “Direct Fit®” aluminum radiator features two rows of 1” cooling tubes, doubling the cooling capacity of the factory single row. The press-formed aluminum end tanks are TIG-welded to the core, eliminating failures due to cracked plastic end tanks and/or gasket leaks. This unit fits into the original mounting and has all the factory connections and an automatic transmission cooler with factory flare connections.



32-1139006M

### DeWitts™ Direct Fit® Pro-Series (2 Row 1" Tubes)

	Natural	Black Ice
Automatic	<b>32-1139006A</b> \$ 859.99	<b>32-1239006A</b> \$ 1,009.99
Manual	<b>32-1139006M</b> \$ 759.99	<b>32-1239006M</b> \$909.99

### DeWitts™ HP Series (2 Row 1.25" Tubes)

	Natural	Black Ice
Automatic	<b>32-1149006A</b> \$ 1,059.99	<b>32-1249006A</b> \$1,209.99
Manual	<b>32-1149006M</b> \$ 959.99	<b>32-1249006M</b> \$1,109.99

### DeWitts™ LS Modified Pro-Series

LS Series Rad / Auto	<b>32-3139006A</b> \$ 934.99	<b>32-3239006A</b> \$ 1,084.99
LS Series Rad / Man.	<b>32-3139006M</b> \$ 834.99	<b>32-3239006M</b> \$ 984.99
LS Series Combo / Auto	<b>32-6139006A</b> \$ 1,699.99	<b>32-6239006A</b> \$1,849.99
LS Series Combo / Man.	<b>32-6139006M</b> \$1,599.99	<b>32-6239006M</b> \$1,749.99



32-1139007M

## 1993-02 CAMARO HIGH PERFORMANCE

This high performance “Direct Fit™” aluminum radiator features two rows of 1” cooling tubes, doubling the cooling capacity of the factory single row. The press-formed aluminum end tanks are TIG-welded to the core, eliminating failures due to cracked plastic end tanks and/or gasket leaks. This unit fits into the original mounting and has all the factory connections and an automatic transmission cooler with factory flare connections.

### DeWitts™ Direct Fit® Pro-Series (2 Row 1" Tubes)

### DeWitts™ HP Series (2 Row 1.25" Tubes)

Automatic ('93-'97 LT1 No Coolant Sensor)

Manual ('93-'97 LT1 No Coolant Sensor)

Automatic ('98-'02 LS1 With Low Coolant Sensor)

Manual ('98-'02 LS1 With Low Coolant Sensor)

Natural	Black Ice
<b>32-1139007A</b> \$859.99	<b>32-1239007A</b> \$1,009.99
<b>32-1139007M</b> \$759.99	<b>32-1239007M</b> \$909.99
<b>32-1139027A</b> \$859.99	<b>32-1239027A</b> \$1,009.99
<b>32-1139027M</b> \$759.99	<b>32-1239027M</b> \$909.99

Natural	Black Ice
<b>32-1149007A</b> \$1,059.99	<b>32-1249007A</b> \$1,209.99
<b>32-1149007M</b> \$959.99	<b>32-1249007M</b> \$1,109.99
<b>32-1149027A</b> \$1,059.99	<b>32-1249027A</b> \$1,209.99
<b>32-1149027M</b> \$959.99	<b>32-1249027M</b> \$1,109.99



## CAMARO FAN UPGRADE

We completely redesigned our Camaro fan package to utilize a laser-cut aluminum shroud. The shroud incorporates four rubber flapper valves to improve air flow at high speeds and close at slower speeds. Two SPAL 12" high performance fans provide 3260 CFM, which doubles the factory output. DeWitts™ customized the fans with matching fan plugs, so no cutting or splicing is required.

All Standard Height Camaro Models

**32-SP015** \$499<sup>99</sup>



32-1139009M

## 2010-15 CAMARO HIGH PERFORMANCE



This high performance “Direct Fit™” aluminum radiator features two rows of 1” cooling tubes, doubling the cooling capacity of the factory single row. The formed aluminum end tanks are TIG-welded to the core, eliminating failures due to cracked plastic end tanks and/or gasket leaks. This unit fits into the original mounting. The factory connections, automatic transmission cooler with factory flare, stock fan shroud mounting and condenser are all in place for easy installation. Fits all 2010-2015 Camaros.

### DeWitts™ Direct Fit® Pro-Series (2 Row 1" Tubes)

### DeWitts™ HP Series (2 Row 1.25" Tubes)

Automatic (2010-2011 Camaro All Models)

Automatic (2012-2015 Camaro All Except Z28)

Natural
<b>32-1139008A</b> \$839.99
<b>32-1139009A</b> \$839.99

Natural
<b>32-1149008A</b> \$1,039.99
<b>32-1149009A</b> \$1,039.99





## 2017-CURRENT CAMARO ZL1 HIGH PERFORMANCE

This high performance "Direct Fit™" aluminum radiator features two rows of 1" cooling tubes, doubling the cooling capacity of the factory single row. The formed aluminum end tanks are TIG-welded to the core, eliminating failures due to cracked plastic end tanks and/or gasket leaks. This unit fits into the original mounts. The factory connections, automatic transmission cooler with factory flare, stock fan shroud mounting and condenser are all in place for easy installation. Fits automatic 2017 ZL1 Camaros.



32-1139045A

**NEW!**



Center Heat Exchanger

**NEW!**



Side Heat Exchanger

Gen 6 Camaro			
	Natural		Black Ice

Automatic	<b>32-1139045A</b>	\$944.99	<b>32-1239045A</b> \$1,094.99
-----------	--------------------	----------	-------------------------------

Gen 6 Camaro Triple Kit			
	Natural		Black Ice

Center Heat Exchanger	<b>32-9139008M</b>	\$633.99	<b>32-9239008M</b> \$783.99
Side Heat Exchanger	<b>32-9139009M</b>	\$348.99	<b>32-9239009M</b> \$423.99
3 Piece Combo	<b>32-9139089M</b>	\$1,299.99	<b>32-9239089M</b> \$1,499.99

## CHEVELLE 1964-65

This radiator is for all 1964-65 Chevelles (small block and LS engines) with manual or automatic transmissions. Inlet and outlet are on the passenger side. This radiator features factory-type press-formed end tanks, dual row core, and serpentine fins. This radiator will provide 30% more cooling than the stock copper unit and half the weight. LS Series combo features dual 12" Flex-A-Lite fans for a low-profile clearance, great for serpentine belt systems. It is epoxy-free and will fit into the stock core support. Radiator comes with 2 rows of 1" tubes, dual fans, billet DeWitts™ cap, temp sensor in the radiator, steam line, relays, and wiring.



32-1139001A

DeWitts™ Direct Fit® Pro-Series (2 Row 1" Tubes)			
	Natural		Black Ice

Automatic	<b>32-1139001A</b>	\$859.99	<b>32-1239001A</b> \$1,009.99
Manual	<b>32-1139001M</b>	\$759.99	<b>32-1239001M</b> \$909.99
Fan Combo / Auto	<b>32-4139001A</b>	\$1,409.99	<b>32-4239001A</b> \$1,559.99
Fan Combo / Man.	<b>32-4139001M</b>	\$1,309.99	<b>32-4239001M</b> \$1,459.99

DeWitts™ HP Series (2 Row 1.25" Tubes)			
	Natural		Black Ice

	<b>32-1149001A</b>	\$1,059.99	<b>32-1249001A</b> \$1,209.99
	<b>32-1149001M</b>	\$959.99	<b>32-1249001M</b> \$1,109.99
	<b>32-4149001A</b>	\$1,609.99	<b>32-4249001A</b> \$1,759.99
	<b>32-4149001M</b>	\$1,509.99	<b>32-4249001M</b> \$1,659.99

DeWitts™ LS Modified Pro-Series			
---------------------------------	--	--	--

LS Series Rad / Auto	<b>32-3139002A</b>	\$934.99	<b>32-3239002A</b> \$1,084.99
LS Series Rad / Man.	<b>32-3139002M</b>	\$834.99	<b>32-3239002M</b> \$984.99
LS Series Combo / Auto	<b>32-6139002A</b>	\$1,544.99	<b>32-6239002A</b> \$1,694.99
LS Series Combo / Man.	<b>32-6139002M</b>	\$1,444.99	<b>32-6239002M</b> \$1,594.99

DeWitts™ LS HP Series			
-----------------------	--	--	--

	<b>32-3149002A</b>	\$1,134.99	<b>32-3249002A</b> \$1,284.99
	<b>32-3149002M</b>	\$1,034.99	<b>32-3249002M</b> \$1,184.99
	<b>32-6149002A</b>	\$1,744.99	<b>32-6249002A</b> \$1,894.99
	<b>32-6149002M</b>	\$1,644.99	<b>32-6249002M</b> \$1,794.99



32-1139002M

## 1966-67 CHEVELLE



This radiator is a “Direct Fit®” for all 1966-67 “A” body Chevelles with BB engines and automatic or manual transmissions. Also fits SB Chevelles with AC. Features included are factory-type press-formed end tanks, dual row core, and serpentine fins. This radiator will provide 30% more cooling than the stock copper unit, with half the weight. It is also epoxy-free. It will fit into the stock core support and it uses the original factory hoses.



32-6239002M

## CHEVELLE 1966-67 ALL **LS** MODIFIED

This radiator is a “custom package” for all 1966-67 Chevelles with LS engines with manual or automatic transmissions. Inlet and outlet are on the passenger side. This radiator features factory-type press-formed end tanks, dual row core, and serpentine fins. This radiator will provide 30% more cooling than the stock copper unit and half the weight. Features dual 12” Flex-A-Lite fans for a low-profile clearance, great for serpentine belts systems. It is epoxy-free and will fit into the stock core support. Radiator comes with 2 rows of 1” tubes, dual fans, billet DeWitts™ cap, temp sensor in the radiator, steam line, relays, and wiring.

### DeWitts™ Direct Fit® Pro-Series (2 Row 1" Tubes)

	Natural	Black Ice
Automatic	<b>32-1139002A</b> \$859.99	<b>32-1239002A</b> \$1,009.99
Manual	<b>32-1139002M</b> \$759.99	<b>32-1239002M</b> \$909.99
Fan Combo / Auto	<b>32-4139002A</b> \$1,409.99	<b>32-4239002A</b> \$1,559.99
Fan Combo / Man.	<b>32-4139002M</b> \$1,309.99	<b>32-4239002M</b> \$1,459.99

### DeWitts™ HP Series (2 Row 1.25" Tubes)

	Natural	Black Ice
	<b>32-1149002A</b> \$1,059.99	<b>32-1249002A</b> \$1,209.99
	<b>32-1149002M</b> \$959.99	<b>32-1249002M</b> \$1,109.99
	<b>32-4149002A</b> \$1,609.99	<b>32-4249002A</b> \$1,759.99
	<b>32-4149002M</b> \$1,509.99	<b>32-4249002M</b> \$1,659.99

### DeWitts™ **LS** Modified Pro-Series

LS Series Rad / Auto	<b>32-3139002A</b> \$934.99	<b>32-3239002A</b> \$1,084.99
LS Series Rad / Man.	<b>32-3139002M</b> \$834.99	<b>32-3239002M</b> \$984.99
LS Series Combo / Auto	<b>32-6139002A</b> \$1,544.99	<b>32-6239002A</b> \$1,694.99
LS Series Combo / Man.	<b>32-6139002M</b> \$1,444.99	<b>32-6239002M</b> \$1,594.99

### DeWitts™ **LS** HP Series

	<b>32-3149002A</b> \$1,134.99	<b>32-3249002A</b> \$1,284.99
	<b>32-3149002M</b> \$1,034.99	<b>32-3249002M</b> \$1,184.99
	<b>32-6149002A</b> \$1,744.99	<b>32-6249002A</b> \$1,894.99
	<b>32-6149002M</b> \$1,644.99	<b>32-6249002M</b> \$1,794.99

# 1968-77 CHEVELLE



This radiator is a "Direct Fit®" for all 1968-72 BB and manual or automatic transmissions. Also fits SB Chevelles with AC. This radiator features factory-type press-formed end tanks, dual row core, serpentine fins, and the factory-type upper and lower channels. This radiator will provide 30% more cooling than the stock copper unit and half the weight. It is also epoxy-free. It will fit into the stock core support and it uses the original factory hoses. (Features an internal transmission cooler for automatics.)



32-1139003M

# CHEVELLE 1968-77 ALL **LS** MODIFIED

This radiator is a "custom package" for all 1968-72 Chevelles with LS engines with manual transmission. Inlet and outlet are on the passenger side. This radiator features factory-type press-formed end tanks, dual row core, and serpentine fins. This radiator will provide 30% more cooling than the stock copper unit and half the weight. Features dual 11" SPAL fans with 2720 CFM. It is epoxy-free and will fit into the stock core support. Radiator comes with 2 rows of 1" tubes, dual fans, billet DeWitts™ cap, temp sensor in the radiator, steam line, relays, and wiring.



32-6239003M

## 1968-1972 Chevelle

	DeWitts™ Direct Fit® Pro-Series (2 Row 1" Tubes)		DeWitts™ HP Series (2 Row 1.25" Tubes)	
	Natural	Black Ice	Natural	Black Ice
Automatic	<b>32-1139003A</b> \$859.99	<b>32-1239003A</b> \$1,009.99	<b>32-1149003A</b> \$1,059.99	<b>32-1249003A</b> \$1,209.99
Manual	<b>32-1139003M</b> \$759.99	<b>32-1239003M</b> \$909.99	<b>32-1149003M</b> \$959.99	<b>32-1249003M</b> \$1,109.99
Fan Combo / Auto	<b>32-4139003A</b> \$1,439.99	<b>32-4239003A</b> \$1,589.99	<b>32-4149003A</b> \$1,639.99	<b>32-4249003A</b> \$1,789.99
Fan Combo / Man.	<b>32-4139003M</b> \$1,339.99	<b>32-4239003M</b> \$1,489.99	<b>32-4149003M</b> \$1,539.99	<b>32-4249003M</b> \$1,689.99
<b>DeWitts™ LS Modified Pro-Series</b>				
LS Series Rad / Auto	<b>32-3139003A</b> \$934.99	<b>32-3239003A</b> \$1,084.99	<b>32-3149003A</b> \$1,134.99	<b>32-3249003A</b> \$1,284.99
LS Series Rad / Man.	<b>32-3139003M</b> \$834.99	<b>32-3239003M</b> \$984.99	<b>32-3149003M</b> \$1,034.99	<b>32-3249003M</b> \$1,184.99
LS Series Combo / Auto	<b>32-6139003A</b> \$1,544.99	<b>32-6239003A</b> \$1,694.99	<b>32-6149003A</b> \$1,744.99	<b>32-6249003A</b> \$1,894.99
LS Series Combo / Man.	<b>32-6139003M</b> \$1,444.99	<b>32-6239003M</b> \$1,594.99	<b>32-6149003M</b> \$1,644.99	<b>32-6249003M</b> \$1,794.99
<b>DeWitts™ LS HP Series</b>				



## 1973-1977 Chevelle

	DeWitts™ Direct Fit® Pro-Series (2 Row 1" Tubes)		DeWitts™ HP Series (2 Row 1.25" Tubes)	
	Natural	Black Ice	Natural	Black Ice
Automatic	<b>32-1139034A</b> \$859.99	<b>32-1239034A</b> \$1,009.99	<b>32-1149034A</b> \$1,059.99	<b>32-1249034A</b> \$1,209.99
Manual	<b>32-1139034M</b> \$759.99	<b>32-1239034M</b> \$909.99		
Fan Combo / Auto	<b>32-4139034A</b> \$1,439.99	<b>32-4239034A</b> \$1,589.99		
Fan Combo / Man.	<b>32-4139034M</b> \$1,339.99	<b>32-4239034M</b> \$1,489.99		
<b>DeWitts™ LS Modified Pro-Series</b>				
LS Series Rad / Auto	<b>32-3139034A</b> \$934.99	<b>32-3239034A</b> \$1,084.99		
LS Series Rad / Man.	<b>32-3139034M</b> \$834.99	<b>32-3239034M</b> \$984.99		
LS Series Combo / Auto	<b>32-6139034A</b> \$1,544.99	<b>32-6239034A</b> \$1,694.99		
LS Series Combo / Man.	<b>32-6139034M</b> \$1,444.99	<b>32-6239034M</b> \$1,594.99		



32-1239034A



32-1239012M

## 1955-57 V8 POSITION CHEVY



High performance two row aluminum radiator for small block and big block engines. Eight-cylinder mount - to fit all factory V8 cars. Bare aluminum finish. Automatic option comes with factory-style transmission cooler with factory line connections in the stock locations.

DeWitts™ Direct Fit® Pro-Series (2 Row 1" Tubes)			
	Natural		Black Ice

DeWitts™ HP Series (2 Row 1.25" Tubes)			
	Natural		Black Ice

Automatic	<b>32-1139012A</b>	\$859.99	<b>32-1239012A</b>	\$1,009.99
Manual	<b>32-1139012M</b>	\$759.99	<b>32-1239012M</b>	\$909.99
Fan Combo / Auto	<b>32-4139012A</b>	\$1,254.99	<b>32-4239012A</b>	\$1,404.99
Fan Combo / Man.	<b>32-4139012M</b>	\$1,154.99	<b>32-4239012M</b>	\$1,304.99

Automatic	<b>32-1149012A</b>	\$1,059.99	<b>32-1249012A</b>	\$1,209.99
Manual	<b>32-1149012M</b>	\$959.99	<b>32-1249012M</b>	\$1,109.99
Fan Combo / Auto	<b>32-4149012A</b>	\$1,454.99	<b>32-4249012A</b>	\$1,604.99
Fan Combo / Man.	<b>32-4149012M</b>	\$1,354.99	<b>32-4249012M</b>	\$1,504.99



32-1139013M

## 1955-57 6 CYLINDER POSITION CHEVY

High performance two row aluminum radiator for small block and big block engines. Six-cylinder mount positioned in front of the core support with the factory-style bump in tank, so the hose goes over the core support. With the Black Ice option this radiator looks and fits like the original radiator. Automatic option comes with factory-style transmission cooler with factory line connections in the stock locations.



32-6239013A

## CHEVY BEL AIR / TRI-5 **LS**



**STANDARD V6 MOUNT POSITION** This radiator is a "custom package" for all 1955-57 Chevy Tri-5 Bel Air with LS engines with manual and automatic transmissions. Inlet and outlet are in stock position with LS sized tubing. This radiator features factory-type press-formed end tanks, dual row core, and serpentine fins. This radiator will provide 30% more cooling than the stock copper unit and half the weight. Features single 16" SPAL high performance fan. It is epoxy-free and will fit into the stock core support. Radiator comes with 2 rows of 1" tubes, SPAL 16" fan, billet DeWitts™ cap, temp sensor in the radiator, steam line, relay, and wiring.

DeWitts™ Direct Fit® Pro-Series (2 Row 1" Tubes)			
	Natural		Black Ice

DeWitts™ HP Series (2 Row 1.25" Tubes)			
	Natural		Black Ice

Automatic	<b>32-1139013A</b>	\$859.99	<b>32-1239013A</b>	\$1,009.99
Manual	<b>32-1139013M</b>	\$759.99	<b>32-1239013M</b>	\$909.99
Fan Combo / Auto	<b>32-4139013A</b>	\$1,254.99	<b>32-4239013A</b>	\$1,404.99
Fan Combo / Man.	<b>32-4139013M</b>	\$1,154.99	<b>32-4239013M</b>	\$1,304.99

Automatic	<b>32-1149013A</b>	\$1,059.99	<b>32-1249013A</b>	\$1,209.99
Manual	<b>32-1149013M</b>	\$959.99	<b>32-1249013M</b>	\$1,109.99
Fan Combo / Auto	<b>32-4149013A</b>	\$1,454.99	<b>32-4249013A</b>	\$1,604.99
Fan Combo / Man.	<b>32-4149013M</b>	\$1,354.99	<b>32-4249013M</b>	\$1,504.99

DeWitts™ <b>LS</b> Modified Pro-Series			
--	--	--	--

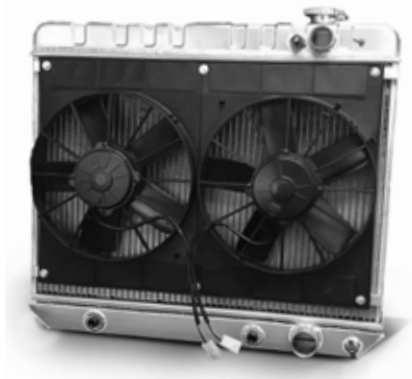
DeWitts™ <b>LS</b> HP Series			
------------------------------	--	--	--

LS Series Rad / Auto	<b>32-3139013A</b>	\$934.99	<b>32-3239013A</b>	\$1,084.99
LS Series Rad / Man.	<b>32-3139013M</b>	\$834.99	<b>32-3239013M</b>	\$984.99
LS Series Combo / Auto	<b>32-6139013A</b>	\$1,384.99	<b>32-6239013A</b>	\$1,534.99
LS Series Combo / Man.	<b>32-6139013M</b>	\$1,284.99	<b>32-6239013M</b>	\$1,434.99

LS Series Rad / Auto	<b>32-3149013A</b>	\$1,134.99	<b>32-3249013A</b>	\$1,284.99
LS Series Rad / Man.	<b>32-3149013M</b>	\$1,034.99	<b>32-3249013M</b>	\$1,184.99
LS Series Combo / Auto	<b>32-6149013A</b>	\$1,584.99	<b>32-6249013A</b>	\$1,734.99
LS Series Combo / Man.	<b>32-6149013M</b>	\$1,484.99	<b>32-6249013M</b>	\$1,634.99

# CHEVY NOVA / CHEVY II 1962-67 **LS** MODIFIED

This radiator is a “custom package” for all 1962-67 Chevy II, Nova, with LS engines with manual or automatic transmissions. Inlet and outlet are on the passenger side. This radiator features factory-type press-formed end tanks, dual row core, and serpentine fins. This radiator will provide 30% more cooling than the stock copper unit and half the weight. Features dual 11” SPAL fans with 2720 CFM. It is epoxy-free and will fit into the stock core support. Radiator comes with 2 rows of 1” tubes, dual fans, billet DeWitts™ cap, temp sensor in the radiator, steam line, relays, and wiring.



32-6139010A

### DeWitts™ Direct Fit® Pro-Series (2 Row 1" Tubes)

	Natural	Black Ice
Automatic	<b>32-1139010A</b> \$859.99	<b>32-1239010A</b> \$1,009.99
Manual	<b>32-1139010M</b> \$759.99	<b>32-1239010M</b> \$909.99
Fan Combo / Auto	<b>32-4139010A</b> \$1,439.99	<b>32-4239010A</b> \$1,589.99
Fan Combo / Man.	<b>32-4139010M</b> \$1,339.99	<b>32-4239010M</b> \$1,489.99

### DeWitts™ HP Series (2 Row 1.25" Tubes)

	Natural	Black Ice
	<b>32-1149010A</b> \$1,059.99	<b>32-1249010A</b> \$1,209.99
	<b>32-1149010M</b> \$959.99	<b>32-1249010M</b> \$1,109.99
	<b>32-4149010A</b> \$1,639.99	<b>32-4249010A</b> \$1,789.99
	<b>32-4149010M</b> \$1,539.99	<b>32-4249010M</b> \$1,689.99

### DeWitts™ **LS** Modified Pro-Series

LS Series Rad / Auto	<b>32-3139010A</b> \$934.99	<b>32-3239010A</b> \$1,084.99
LS Series Rad / Man.	<b>32-3139010M</b> \$834.99	<b>32-3239010M</b> \$984.99
LS Series Combo / Auto	<b>32-6139010A</b> \$1,544.99	<b>32-6239010A</b> \$1,694.99
LS Series Combo / Man.	<b>32-6139010M</b> \$1,444.99	<b>32-6239010M</b> \$1,594.99

### DeWitts™ **LS** HP Series

	<b>32-3149010A</b> \$1,134.99	<b>32-3249010A</b> \$1,284.99
	<b>32-3149010M</b> \$1,034.99	<b>32-3249010M</b> \$1,184.99
	<b>32-6149010A</b> \$1,744.99	<b>32-6249010A</b> \$1,894.99
	<b>32-6149010M</b> \$1,644.99	<b>32-6249010M</b> \$1,794.99

# 1968-72 CHEVY NOVA



This radiator is a “Direct Fit®” for all 1968-72 Chevy Nova with automatic or manual transmissions (for BB, see Note). Also fits base model SB Chevelles. This radiator features factory-type press-formed end tanks, dual row core, serpentine fins, and the factory-type upper and lower channels. This radiator will provide 30% more cooling than the stock copper unit and half the weight. It is also epoxy-free. It will fit into the stock core support and it uses the original factory hoses.



32-1139011M

### DeWitts™ Direct Fit® Pro-Series (2 Row 1" Tubes)

	Natural	Black Ice
Automatic	<b>32-1139011A</b> \$859.99	<b>32-1239011A</b> \$1,009.99
Manual	<b>32-1139011M</b> \$759.99	<b>32-1239011M</b> \$909.99
Fan Combo / Auto	<b>32-4139011A</b> \$1,254.99	<b>32-4239011A</b> \$1,404.99
Fan Combo / Man.	<b>32-4139011M</b> \$1,154.99	<b>32-4239011M</b> \$1,304.99

### DeWitts™ HP Series (2 Row 1.25" Tubes)

	Natural	Black Ice
	<b>32-1149011A</b> \$1,059.99	<b>32-1249011A</b> \$1,209.99
	<b>32-1149011M</b> \$959.99	<b>32-1249011M</b> \$1,109.99
	<b>32-4149011A</b> \$1,454.99	<b>32-4249011A</b> \$1,604.99
	<b>32-4149011M</b> \$1,354.99	<b>32-4249011M</b> \$1,504.99

### DeWitts™ **LS** Modified Pro-Series

LS Series Rad / Auto	<b>32-3139011A</b> \$934.99	<b>32-3239011A</b> \$1,084.99
LS Series Rad / Man.	<b>32-3139011M</b> \$834.99	<b>32-3239011M</b> \$984.99
LS Series Combo / Auto	<b>32-6139011A</b> \$1,384.99	<b>32-6239011A</b> \$1,534.99
LS Series Combo / Man.	<b>32-6139011M</b> \$1,284.99	<b>32-6239011M</b> \$1,434.99

### DeWitts™ **LS** HP Series

	<b>32-3149011A</b> \$1,134.99	<b>32-3249011A</b> \$1,284.99
	<b>32-3149011M</b> \$1,034.99	<b>32-3249011M</b> \$1,184.99
	<b>32-6149011A</b> \$1,584.99	<b>32-6249011A</b> \$1,734.99
	<b>32-6149011M</b> \$1,484.99	<b>32-6249011M</b> \$1,634.99

Note: For '68-'72 BB Nova, see page 22 (models 32-1139022M or 32-1139022A).



32-6139014A

# 1959-70 CHEVY IMPALA



This radiator is a "Direct Fit®" for all 1959-70 Chevy Impala with automatic or manual transmissions. This radiator features factory-type press-formed end tanks, serpentine fins, and the factory-type upper and lower channels. This radiator will provide a 25% increase in cooling performance. It is also epoxy-free. It will fit into the stock core support and it uses the original factory hoses.

1959-64 Impala Radiator With Notched Out Driver-side Tank For Steering Box Clearance			
32-1139014 Pro-Series			
DeWitts™ Direct Fit® Pro-Series (2 Row 1" Tubes)			
	Natural		Black Ice

1959-64 Impala Radiator Full Height			
32-139015M Pro-Series			
DeWitts™ Direct Fit Pro-Series (2 Row 1" Tubes)			
	Natural		Black Ice

Automatic	<b>32-1139014A</b>	\$859.99	<b>32-1239014A</b>	\$1,009.99
Manual	<b>32-1139014M</b>	\$759.99	<b>32-1239014M</b>	\$909.99
Fan Combo / Auto	<b>32-4139014A</b>	\$1,439.99	<b>32-4239014A</b>	\$1,589.99
Fan Combo / Man.	<b>32-4139014M</b>	\$1,339.99	<b>32-4239014M</b>	\$1,489.99

Automatic	<b>32-1139015A</b>	\$859.99	<b>32-1239015A</b>	\$1,009.99
Manual	<b>32-1139015M</b>	\$759.99	<b>32-1239015M</b>	\$909.99
Fan Combo / Auto	<b>32-4139015A</b>	\$1,439.99	<b>32-4239015A</b>	\$1,589.99
Fan Combo / Man.	<b>32-4139015M</b>	\$1,339.99	<b>32-4239015M</b>	\$1,489.99

### DeWitts™ LS Modified Pro-Series

### DeWitts™ LS Modified Pro-Series

LS Series Rad / Auto	<b>32-3139014A</b>	\$934.99	<b>32-3239014A</b>	\$1,084.99
LS Series Rad / Man.	<b>32-3139014M</b>	\$834.99	<b>32-3239014M</b>	\$984.99
LS Series Combo / Auto	<b>32-6139014A</b>	\$1,544.99	<b>32-6239014A</b>	\$1,694.99
LS Series Combo / Man.	<b>32-6139014M</b>	\$1,444.99	<b>32-6239014M</b>	\$1,594.99

LS Series Rad / Auto	<b>32-3139015A</b>	\$934.99	<b>32-3239015A</b>	\$1,084.99
LS Series Rad / Man.	<b>32-3139015M</b>	\$834.99	<b>32-3239015M</b>	\$984.99
LS Series Combo / Auto	<b>32-6139015A</b>	\$1,544.99	<b>32-6239015A</b>	\$1,694.99
LS Series Combo / Man.	<b>32-6139015M</b>	\$1,444.99	<b>32-6239015M</b>	\$1,594.99



1965-70 Impala Radiator Full Height			
DeWitts™ Direct Fit® Pro-Series (2 Row 1" Tubes)		DeWitts™ HP Series (2 Row 1.25" Tubes)	
	Natural		Black Ice

Automatic	<b>32-1139016A</b>	\$859.99	<b>32-1239016A</b>	\$1,009.99
Manual	<b>32-1139016M</b>	\$759.99	<b>32-1239016M</b>	\$909.99
Fan Combo / Auto	<b>32-4139016A</b>	\$1,439.99	<b>32-4239016A</b>	\$1,589.99
Fan Combo / Man.	<b>32-4139016M</b>	\$1,339.99	<b>32-4239016M</b>	\$1,489.99

Automatic	<b>32-1149016A</b>	\$1,059.99	<b>32-1249016A</b>	\$1,209.99
Manual	<b>32-1149016M</b>	\$959.99	<b>32-1249016M</b>	\$1,109.99
Fan Combo / Auto	<b>32-4149016A</b>	\$1,639.99	<b>32-4249016A</b>	\$1,789.99
Fan Combo / Man.	<b>32-4149016M</b>	\$1,539.99	<b>32-4249016M</b>	\$1,689.99

### DeWitts™ LS Modified Pro-Series

### DeWitts™ LS HP Series

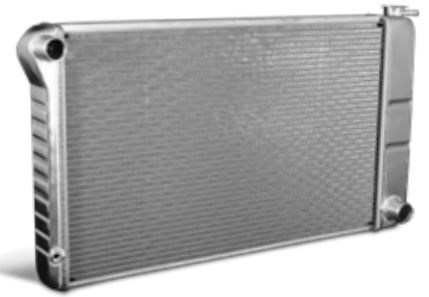
LS Series Rad / Auto	<b>32-3139016A</b>	\$939.99	<b>32-3239016A</b>	\$1,089.99
LS Series Rad / Man.	<b>32-3139016M</b>	\$839.99	<b>32-3239016M</b>	\$989.99
LS Series Combo / Auto	<b>32-6139016A</b>	\$1,544.99	<b>32-6239016A</b>	\$1,694.99
LS Series Combo / Man.	<b>32-6139016M</b>	\$1,444.99	<b>32-6239016M</b>	\$1,594.99

LS Series Rad / Auto	<b>32-3149016A</b>	\$1,139.99	<b>32-3249016A</b>	\$1,289.99
LS Series Rad / Man.	<b>32-3149016M</b>	\$1,039.99	<b>32-3249016M</b>	\$1,189.99
LS Series Combo / Auto	<b>32-6149016A</b>	\$1,744.99	<b>32-6249016A</b>	\$1,894.99
LS Series Combo / Man.	<b>32-6149016M</b>	\$1,644.99	<b>32-6249016M</b>	\$1,794.99

# 1971-79 & 1986-90 IMPALA



This radiator is a "Direct Fit®" for all 1971-79 and 1986-90 BB manual or automatic transmissions. Also fits SB Impalas with AC. This radiator features factory-type press-formed end tanks, dual row core, serpentine fins, and the factory-type upper and lower channels. This radiator will provide 30% more cooling than the stock copper unit and half the weight. It is also epoxy-free. It will fit into the stock core support and it uses the original factory hoses. (Features an internal transmission cooler for automatics.)



32-1139003M

# IMPALA 1971-79 & 1986-90 ALL **LS** MODIFIED

This radiator is a "custom package" for all 1971-79 and 1986-90 Impalas with LS engines with manual transmission. Inlet and outlet are on the passenger side. This radiator features factory-type press-formed end tanks, dual row core, and serpentine fins. This radiator will provide 30% more cooling than the stock copper unit and half the weight. Features dual 11" SPAL fans with 2720 CFM. It is epoxy-free and will fit into the stock core support. Radiator comes with 2 rows of 1" tubes, dual fans, billet DeWitts™ cap, temp sensor in the radiator, steam line, relays, and wiring.



32-6239003M

### DeWitts™ Direct Fit® Pro-Series (2 Row 1" Tubes)

	Natural	Black Ice
Automatic	<b>32-1139003A</b> \$859.99	<b>32-1239003A</b> \$1,009.99
Manual	<b>32-1139003M</b> \$759.99	<b>32-1239003M</b> \$909.99
Fan Combo / Auto	<b>32-4139003A</b> \$1,43.99	<b>32-4239003A</b> \$1,589.99
Fan Combo / Man.	<b>32-4139003M</b> \$1,339.99	<b>32-4239003M</b> \$1,489.99

### DeWitts™ HP Series (2 Row 1.25" Tubes)

	Natural	Black Ice
Automatic	<b>32-1149003A</b> \$1,059.99	<b>32-1249003A</b> \$1,209.99
Manual	<b>32-1149003M</b> \$959.99	<b>32-1249003M</b> \$1,109.99
Fan Combo / Auto	<b>32-4149003A</b> \$1,639.99	<b>32-4249003A</b> \$1,789.99
Fan Combo / Man.	<b>32-4149003M</b> \$1,539.99	<b>32-4249003M</b> \$1,689.99

### DeWitts™ **LS** Modified Pro-Series

LS Series Rad / Auto	<b>32-3139003A</b> \$934.99	<b>32-3239003A</b> \$1,134.99
LS Series Rad / Man.	<b>32-3139003M</b> \$834.99	<b>32-3239003M</b> \$1,034.99
LS Series Combo / Auto	<b>32-6139003A</b> \$1,544.99	<b>32-6239003A</b> \$1,744.99
LS Series Combo / Man.	<b>32-6139003M</b> \$1,444.99	<b>32-6239003M</b> \$1,644.99

### DeWitts™ **LS** HP Series

LS Series Rad / Auto	<b>32-3149003A</b> \$1,134.99	<b>32-3249003A</b> \$1,284.99
LS Series Rad / Man.	<b>32-3149003M</b> \$1,034.99	<b>32-3249003M</b> \$1,184.99
LS Series Combo / Auto	<b>32-6149003A</b> \$1,744.99	<b>32-6249003A</b> \$1,894.99
LS Series Combo / Man.	<b>32-6149003M</b> \$1,644.99	<b>32-6249003M</b> \$1,794.99





32-1139005M

## 1980-90 IMPALA



This is a true “Direct Fit®” aluminum radiator for 1980-90 Impalas. Unlike other “universal” aftermarket radiators, this model features the factory-type upper channels, stock hose connections, and press-formed tanks. It is also epoxy-free. No cutting or modifying is required. This radiator features two rows of 1” wide tubes and will provide 30% more cooling than an equal size four row copper radiator.



32-6239005M

## IMPALA 1980-90 ALL **LS** MODIFIED

This radiator is a “custom package” for all 1980-90 Impalas with LS engines with manual or automatic transmissions. Inlet and outlet are on the passenger side. This radiator features factory-type press-formed end tanks, dual row core, and serpentine fins. This radiator will provide 30% more cooling than the stock copper unit and half the weight. Features dual 11” SPAL fans with 2720 CFM. It is epoxy-free and will fit into the stock core support. Radiator comes with 2 rows of 1” tubes, dual fans, billet DeWitts™ cap, temp sensor in the radiator, steam line, relays, and wiring.

### DeWitts™ Direct Fit® Pro-Series (2 Row 1" Tubes)

	Natural	Black Ice
Automatic	<b>32-1139005A</b> \$859.99	<b>32-1239005A</b> \$1,009.99
Manual	<b>32-1139005M</b> \$759.99	<b>32-1239005M</b> \$909.99
Fan Combo / Auto	<b>32-4139005A</b> \$1,439.99	<b>32-4239005A</b> \$1,589.99
Fan Combo / Man.	<b>32-4139005M</b> \$1,339.99	<b>32-4239005M</b> \$1,489.99

### DeWitts™ HP Series (2 Row 1.25" Tubes)

	Natural	Black Ice
	<b>32-1149005A</b> \$1,059.99	<b>32-1249005A</b> \$1,209.99
	<b>32-1149005M</b> \$959.99	<b>32-1249005M</b> \$1,109.99
	<b>32-4149005A</b> \$1,639.99	<b>32-4249005A</b> \$1,789.99
	<b>32-4149005M</b> \$1,539.99	<b>32-4249005M</b> \$1,689.99

### DeWitts™ **LS** Modified Pro-Series

LS Series Rad / Auto	<b>32-3139005A</b> \$934.99	<b>32-3239005A</b> \$1,084.99
LS Series Rad / Man.	<b>32-3139005M</b> \$834.99	<b>32-3239005M</b> \$984.99
LS Series Combo / Auto	<b>32-6139005A</b> \$1,544.99	<b>32-6239005A</b> \$1,694.99
LS Series Combo / Man.	<b>32-6139005M</b> \$1,444.99	<b>32-6239005M</b> \$1,594.99

### DeWitts™ **LS** HP Series

	<b>32-3149005A</b> \$1,134.99	<b>32-3249005A</b> \$1,284.99
	<b>32-3149005M</b> \$1,034.99	<b>32-3249005M</b> \$1,184.99
	<b>32-6149005A</b> \$1,744.99	<b>32-6249005A</b> \$1,894.99
	<b>32-6149005M</b> \$1,644.99	<b>32-6249005M</b> \$1,794.99

## 1994-96 IMPALA

This is a true “Direct Fit®” aluminum radiator for 1994-96 Impalas. Unlike other “universal” aftermarket radiators, this model features the factory-type upper channels, stock hose connections, and press-formed tanks. It is also epoxy-free. No cutting or modifying is required. This radiator features two rows of 1” wide tubes and will provide 30% more cooling than an equal size four row copper radiator.

### DeWitts™ Direct Fit® Pro-Series (2 Row 1" Tubes)

	Natural	Radiator Fan Combo
Auto and Oil Cooler	<b>32-1139044B</b> \$859.99	<b>32-4139044B</b> \$1,369.99

### DeWitts™ **LS** Modified Pro-Series

LS Series Rad / Auto	<b>32-3139044A</b> \$939.99	<b>32-3139044AF</b> \$1,384.99
LS Series Rad / Man.	<b>32-3139044M</b> \$839.99	<b>32-3139044MF</b> \$1,284.99



# 1978-88 CHEVY MONTE CARLO G-BODY

This radiator is a "Direct Fit®" for all 1978-87 G-Body Monte Carlos with automatic or manual transmissions. This radiator features factory-type press-formed end tanks, dual row core, serpentine fins, and the factory-type upper and lower channels. This radiator will provide 30% more cooling than the stock copper unit and half the weight. It is also epoxy-free. It will fit into the stock core support and it uses the original factory hoses.



32-1139005M

Manual Transmission Radiator	<b>32-1139005M</b>	\$759 <sup>99</sup>
Automatic Transmission Radiator	<b>32-1139005A</b>	\$859 <sup>99</sup>
+ Black Ice Coating / Manual	<b>32-1239005M</b>	\$909 <sup>99</sup>
+ Black Ice Coating / Automatic	<b>32-1239005A</b>	\$1,009 <sup>99</sup>
+ Dual SPAL Fan / Manual	<b>32-4139005M</b>	\$1,339 <sup>99</sup>
+ Dual SPAL Fan / Automatic	<b>32-4139005A</b>	\$1,439 <sup>99</sup>
+ Dual SPAL Fan / Manual / Black Ice Coating	<b>32-4239005M</b>	\$1,489 <sup>99</sup>
+ Dual SPAL Fan / Automatic / Black Ice Coating	<b>32-4239005A</b>	\$1,589 <sup>99</sup>



# CADILLAC CTS-V & ATS-V



"Direct Fit®" aluminum high performance single row 1.5" core radiator. Single row radiator features 1.5" cooling tubes with 16 FPI. This design increases cooling surfaces by 50% over stock unit, and feature formed aluminum tanks, eliminating the stock plastic tanks.



	Cadillac CTS-V Radiator			
	Natural		Black Ice	
2004-2007	<b>32-1129124M</b>	\$809.99	<b>32-1229124M</b>	\$959.99
2009-2014	<b>32-1139126A</b>	\$1,019.99	<b>32-1239126A</b>	\$1,169.99



	2016-2019 Cadillac ATS-V			
	Natural		Black Ice	
Center Heat Exchanger	<b>32-9129029M</b>	\$633.99	<b>32-9229029M</b>	\$783.99
Side Heat Exchanger	<b>32-9129011M</b>	\$348.99	<b>32-9229011M</b>	\$423.99



	Cadillac CTS-V Triple Kit			
	Natural		Black Ice	
Center Heat Exchanger	<b>32-9139008M</b>	\$633.99	<b>32-9239008M</b>	\$783.99
Side Heat Exchanger	<b>32-9139009M</b>	\$348.99	<b>32-9239009M</b>	\$423.99
3 Piece Combo	<b>32-9139089M</b>	\$1,299.99	<b>32-9239089M</b>	\$1,499.99



32-6139017A

## CHEVY C10 TRUCK 1963-66 **LS** MODIFIED

This radiator is a “custom package” for all 1963-66 C10 Chevy Trucks with LS engines with manual and automatic transmissions. Inlet and outlet are on the passenger side. This radiator features factory-type press-formed end tanks, dual row core, and serpentine fins. This radiator will provide 30% more cooling than the stock copper unit and half the weight. Features dual 11” SPAL fans with 2720 CFM. It is epoxy-free and will fit into the stock core support. Radiator comes with 2 rows of 1” tubes, dual fans, billet DeWitts™ cap, temp sensor in the radiator, steam line, relays, and wiring.

### 1963-66 C10 Truck

	DeWitts™ Direct Fit® Pro-Series (2 Row 1" Tubes)		DeWitts™ <b>LS</b> Modified Pro-Series	
	Natural	Black Ice	Natural	Black Ice
Automatic	<b>32-1139017A</b> \$859.99	<b>32-1239017A</b> \$1,009.99	<b>32-3139017A</b> \$934.99	<b>32-3239017A</b> \$1,089.99
Manual	<b>32-1139017M</b> \$759.99	<b>32-1239017M</b> \$909.99	<b>32-3139017M</b> \$834.99	<b>32-3239017M</b> \$984.99
Fan Combo / Auto	<b>32-4139017A</b> \$1,439.99	<b>32-4239017A</b> \$1,589.99	<b>32-6139017A</b> \$1,544.99	<b>32-6239017A</b> \$1,694.99
Fan Combo / Man.	<b>32-4139017M</b> \$1,339.99	<b>32-4239017M</b> \$1,489.99	<b>32-6139017M</b> \$1,444.99	<b>32-6239017M</b> \$1,594.99

## CHEVY C10 TRUCK/BLAZER 1967-72 **LS** MODIFIED



32-6239018A

This radiator is a “custom package” for all 1967-72 C10 platforms with LS engines with manual transmission. Inlet and outlet are on the passenger side. This radiator features factory-type press-formed end tanks, 18.5" dual row core, and serpentine fins. This radiator will provide 30% more cooling than the stock copper unit and half the weight. Features dual 11” SPAL fans with 2720 CFM. It is epoxy-free and will fit into the stock core support. Radiator comes with 2 rows of 1” tubes, dual fans, billet DeWitts™ cap, temp sensor in the radiator, steam line, relays, and wiring.

### 1967-72 C10 Truck (18.5" Tall x 28.25" Core)

	DeWitts™ Direct Fit® Pro-Series (2 Row 1" Tubes)		DeWitts™ <b>LS</b> Modified Pro-Series	
	Natural	Black Ice	Natural	Black Ice
Automatic	<b>32-1139018A</b> \$859.99	<b>32-1239018A</b> \$1,009.99	<b>32-3139018A</b> \$934.99	<b>32-3239018A</b> \$1,084.99
Manual	<b>32-1139018M</b> \$759.99	<b>32-1239018M</b> \$909.99	<b>32-3139018M</b> \$834.99	<b>32-3239018M</b> \$984.99
Fan Combo / Auto	<b>32-4139018A</b> \$1,439.99	<b>32-4239018A</b> \$1,589.99	<b>32-6139018A</b> \$1,544.99	<b>32-6239018A</b> \$1,694.99
Fan Combo / Man.	<b>32-4139018M</b> \$1,339.99	<b>32-4239018M</b> \$1,489.99	<b>32-6139018M</b> \$1,444.99	<b>32-6239018M</b> \$1,594.99

# CHEVY C10 TRUCK/BLAZER 1973-87 **LS** MODIFIED

This radiator is a "custom package" for all 1973-87 C10 Trucks/Blazer with LS engines with manual transmission. Inlet and outlet are on the passenger side. This radiator features factory-type press-formed end tanks, 20.5" dual row core, and serpentine fins. This radiator will provide 30% more cooling than the stock copper unit and half the weight. Features dual 11" SPAL fans with 2720 CFM. It is epoxy-free and will fit into the stock core support. Radiator comes with 2 rows of 1" tubes, dual fans, billet DeWitts™ cap, temp sensor in the radiator, steam line, relays, and wiring.



32-6239019A

	1973-87 C10 Truck (20.5" Tall x 28.25" Core)							
	DeWitts™ Direct Fit® Pro-Series (2 Row 1" Tubes)				DeWitts™ <b>LS</b> Modified Pro-Series			
	Natural		Black Ice		Natural		Black Ice	
Automatic	<b>32-1139019A</b>	\$859.99	<b>32-1239019A</b>	\$1,009.99	<b>32-3139019A</b>	\$934.99	<b>32-3239019A</b>	\$1,084.99
Manual	<b>32-1139019M</b>	\$759.99	<b>32-1239019M</b>	\$909.99	<b>32-3139019M</b>	\$834.99	<b>32-3239019M</b>	\$984.99
Fan Combo / Auto	<b>32-4139019A</b>	\$1,439.99	<b>32-4239019A</b>	\$1,589.99	<b>32-6139019A</b>	\$1,544.99	<b>32-6239019A</b>	\$1,694.99
Fan Combo / Man.	<b>32-4139019M</b>	\$1,339.99	<b>32-4239019M</b>	\$1,489.99	<b>32-6139019M</b>	\$1,444.99	<b>32-6239019M</b>	\$1,594.99

## ADDITIONAL TRUCK OFFERINGS

	DeWitts™ Direct Fit® Pro-Series (2 Row 1" Tubes)		DeWitts™ <b>LS</b> Modified Pro-Series				
	Natural		Natural		Black Ice		
'81-'87 C/K Chevy Truck Diesel Both Trans and Oil Cooler	<b>32-1139050B</b>	\$754.99					
'88-'95 C/K Chevy Truck 28.25" Core Both Trans and Oil Cooler	<b>32-1139051B</b>	\$754.99	Automatic	<b>32-3139051A</b>	\$939.99	<b>32-3239051A</b>	\$1,089.99
			Manual	<b>32-3139051M</b>	\$839.99	<b>32-3239051M</b>	\$989.99
'88-'93 C/K Pickup 34" Core Both Tans and Oil Cooler	<b>32-1139052B</b>	\$754.99	Automatic	<b>32-3139052A</b>	\$949.99	<b>32-3239052A</b>	\$1,099.99
			Manual	<b>32-3139052M</b>	\$849.99	<b>32-3239052M</b>	\$999.99
'99-'03 Silverado 5.3L 28.25" Core Automatic	<b>32-1139057A</b>	\$754.99					
'00-'07 Silverado Both Trans and Oil Cooler	<b>32-1139054B</b>	\$754.99					
'06-'10 Duramax Automatic	<b>32-1139056A</b>	\$754.99					
'06 Hummer Alpha 1 No Cooler/HP Core	<b>32-1149029M</b>	\$999.99					
'96-'04 Chevy S10 LS Swap Radiator Manual with Dual Fans							
			<b>32-6139033M</b>	\$1,459.99	<b>32-6239033M</b>	\$1,609.99	





## B-BODY MOPAR 1966-69 **NEW!**

A Direct Fit® for your Chrysler muscle. Both Dodge and Plymouth models featured either a 22" or 26" wide radiator depending on the engine package and A/C option. These span the 318, 383, 440, and some 426 Hemi engines. The Dodge fleet includes the Charger and Coronet with Plymouth models being the Satellite, GTX, Road Runner, and Belvedere. All are cooled by a Pro-Series Direct Fit® all aluminum downflow radiator with two rows of 1" wide cooling tubes. This offers a nearly 30% increase in cooling performance over the OE radiator. Press-formed ribbed tanks, a 3" overall thickness, and contoured side brackets offer original appearance and mounting. Both versions have a top right inlet and bottom left outlet.



32-1137012A

26" Radiator			
DeWitts™ Direct Fit® Pro-Series (2 Row 1" Tubes)			
	Natural		Black Ice
Automatic	<b>32-1137012A</b>	\$859.99	<b>32-1237012A</b> \$1,009.99
Manual	<b>32-1137012M</b>	\$759.99	<b>32-1237012M</b> \$909.99
Fan Combo / Auto	<b>32-4137012A</b>	\$1,439.99	<b>32-4237012A</b> \$1,589.99
Fan Combo / Man.	<b>32-4137012M</b>	\$1,339.99	<b>32-4237012M</b> \$1,489.99

22" Radiator			
	Natural		Black Ice
Automatic	<b>32-1137006A</b>	\$819.99	<b>32-1237006A</b> \$969.99
Manual	<b>32-1137006M</b>	\$719.99	<b>32-1237006M</b> \$869.99
1970-1972 Duster V8 Auto	<b>32-1137018A</b>	\$859.99	<b>32-1237018A</b> \$1,009.99



## JEEP CHEROKEE & WRANGLER **NEW!**

A rugged ride calls for a tough and reliable cooling package. These Jeep radiators utilize the same superior components and assembly methods that earned a DeWitts™ Radiator victory in the 24 hours of Le Mans. Whether it's a 4.2L straight 6 or a 6.2L Hemi, these Direct Fit® options have you covered.

Jeep Cherokee			
DeWitts™ Direct Fit® Pro-Series (2 Row 1" Tubes)			
	Natural		Black Ice
1987-2001 Cherokee	<b>32-1137010M</b>	\$719.99	<b>32-1237010M</b> \$869.99
2005-2010 Cherokee & SRT8	<b>32-1137020M</b>	\$719.99	<b>32-1237020M</b> \$869.99

Jeep Wrangler			
DeWitts™ Direct Fit® Pro-Series (2 Row 1" Tubes)			
	Natural		Black Ice
1976-1986 CJ7 Manual	<b>32-1137030M</b>	\$599.99	<b>32-1237030M</b> \$749.99
1987-1995 YJ Manual	<b>32-1137035M</b>	\$599.99	<b>32-1237035M</b> \$749.99
1997-2006 TJ Manual	<b>32-1137037M</b>	\$799.99	<b>32-1237037M</b> \$949.99
2007-2018 JK Manual	<b>32-1137039M</b>	\$799.99	<b>32-1237039M</b> \$949.99



# CHALLENGER 2008-CURRENT **NEW!**

A Direct Fit® for your Challenger. This performance package uses unique serpentine cooling fins to maximize airflow contact through the core while increasing coolant capacity by one gallon over the stock single row OE radiator. Couple this with DeWitts™ high performance coolant and you have a robust cooling package ready for the road or track. This radiator is cooled by a Pro-Series Direct Fit® all aluminum downflow radiator with two rows of 1" wide cooling tubes. This offers a nearly 30% increase in cooling performance over the OE radiator. Press-formed ribbed tanks, a 3" overall thickness, and contoured side brackets offer original appearance and mounting.



2008-Present Dodge Challenger			
DeWitts™ Direct Fit® Pro-Series (2 Row 1" Tubes)			
	Natural		Black Ice

Manual	<b>32-1137025M</b>	\$719.99	<b>32-1237025M</b>	\$869.99
--------	--------------------	----------	--------------------	----------

# MUSTANG 1964-66



This radiator features two rows of 1" tubes and serpentine fins at 15 fins per inch. Connections are at the top right and bottom right. Available for manual or automatic transmissions.



32-1138003M

Top Left / Bottom Right Connections							
DeWitts™ Direct Fit® Pro-Series (2 Row 1" Tubes)				DeWitts™ HP Series (2 Row 1.25" Tubes)			
	Natural		Black Ice		Natural		Black Ice

Automatic	<b>32-1138001A</b>	\$599.99	<b>32-1238001A</b>	\$749.99	<b>32-1148001A</b>	\$799.99	<b>32-1248001A</b>	\$949.99
Manual	<b>32-1138001M</b>	\$499.99	<b>32-1238001M</b>	\$649.99	<b>32-1148001M</b>	\$699.99	<b>32-1248001M</b>	\$849.99
Fan Combo / Auto	<b>32-4138001A</b>	\$929.99	<b>32-4238001A</b>	\$1,079.99	<b>32-4148001A</b>	\$1,129.99	<b>32-4248001A</b>	\$1,279.99
Fan Combo / Man.	<b>32-4138001M</b>	\$829.99	<b>32-4238001M</b>	\$979.99	<b>32-4148001M</b>	\$1,029.99	<b>32-4248001M</b>	\$1,179.99

Top Right / Bottom Left Connections							
DeWitts™ Direct Fit® Pro-Series (2 Row 1" Tubes)				DeWitts™ HP Series (2 Row 1.25" Tubes)			
	Natural		Black Ice		Natural		Black Ice

Automatic	<b>32-1138002A</b>	\$599.99	<b>32-1238002A</b>	\$749.99	<b>32-1148002A</b>	\$799.99	<b>32-1248002A</b>	\$949.99
Manual	<b>32-1138002M</b>	\$499.99	<b>32-1238002M</b>	\$649.99	<b>32-1148002M</b>	\$699.99	<b>32-1248002M</b>	\$849.99
Fan Combo / Auto	<b>32-4138002A</b>	\$929.99	<b>32-4238002A</b>	\$1,079.99	<b>32-4148002A</b>	\$1,129.99	<b>32-4248002A</b>	\$1,279.99
Fan Combo / Man.	<b>32-4138002M</b>	\$829.99	<b>32-4238002M</b>	\$979.99	<b>32-4148002M</b>	\$1,029.99	<b>32-4248002M</b>	\$1,179.99

Top Right / Bottom Right Connections							
DeWitts™ Direct Fit® Pro-Series (2 Row 1" Tubes)				DeWitts™ HP Series (2 Row 1.25" Tubes)			
	Natural		Black Ice		Natural		Black Ice

Automatic	<b>32-1138003A</b>	\$599.99	<b>32-1238003A</b>	\$749.99	<b>32-1148003A</b>	\$799.99	<b>32-1248003A</b>	\$949.99
Manual	<b>32-1138003M</b>	\$499.99	<b>32-1238003M</b>	\$649.99	<b>32-1148003M</b>	\$699.99	<b>32-1248003M</b>	\$849.99
Fan Combo / Auto	<b>32-4138003A</b>	\$944.99	<b>32-4238003A</b>	\$1,094.99	<b>32-4148003A</b>	\$1,144.99	<b>32-4248003A</b>	\$1,244.99
Fan Combo / Man.	<b>32-4138003M</b>	\$844.99	<b>32-4238003M</b>	\$944.99	<b>32-4148003M</b>	\$1,044.99	<b>32-4248003M</b>	\$1,144.99



32-1138004A

## MUSTANG 1967 (289)

This radiator features two rows of 1" tubes and serpentine fin at 15 fins per inch. Connections are at the top right and bottom right. Used on Mach 1 and also fits 1967-70 with 390/427/428 and 1970 302/351 Mustang and Cougar with HD cooling. Available for manual or automatic transmissions.

	Top Right / Bottom Right Connections							
	DeWitts™ Direct Fit® Pro-Series (2 Row 1" Tubes)				DeWitts™ HP Series (2 Row 1.25" Tubes)			
	Natural		Black Ice		Natural		Black Ice	
Automatic	<b>32-1138004A</b>	\$599.99	<b>32-1238004A</b>	\$749.99	<b>32-1148004A</b>	\$799.99	<b>32-1248004A</b>	\$949.99
Manual	<b>32-1138004M</b>	\$499.99	<b>32-1238004M</b>	\$649.99	<b>32-1148004M</b>	\$699.99	<b>32-1248004M</b>	\$849.99
Fan Combo / Auto	<b>32-4138004A</b>	\$944.99	<b>32-4238004A</b>	\$1,094.99	<b>32-4148004A</b>	\$1,144.99	<b>32-4248004A</b>	\$1,294.99
Fan Combo / Man.	<b>32-4138004M</b>	\$844.99	<b>32-4238004M</b>	\$994.99	<b>32-4148004M</b>	\$1,044.99	<b>32-4248004M</b>	\$1,194.99



32-4138005M

## 1968-70 MUSTANG

This radiator features press-formed tanks similar to the original brass/copper unit. It has two rows of 1" tubes and serpentine fins at 15 fins per inch. The hose connection locations vary per application. Note: Upper tank is formed from original 4-row copper brass tank and may require the larger upper bracket. Check your vehicle's configuration first and then choose the correction application from the list below.

	Top Left / Bottom Right Connections			
	DeWitts™ Direct Fit® Pro-Series (2 Row 1" Tubes)			
	Natural		Black Ice	
Automatic	<b>32-1138005A</b>	\$599.99	<b>32-1238005A</b>	\$749.99
Manual	<b>32-1138005M</b>	\$499.99	<b>32-1238005M</b>	\$649.99
Dual Fan Combo / Auto	<b>32-4138005A</b>	\$1,209.99	<b>32-4238005A</b>	\$1,359.99
Dual Fan Combo / Man.	<b>32-4138005M</b>	\$1,109.99	<b>32-4238005M</b>	\$1,259.99

	Top Right / Bottom Left Connections			
	DeWitts™ Direct Fit® Pro-Series (2 Row 1" Tubes)			
	Natural		Black Ice	
Automatic	<b>32-1138006A</b>	\$599.99	<b>32-1238006A</b>	\$749.99
Manual	<b>32-1138006M</b>	\$499.99	<b>32-1238006M</b>	\$649.99
Dual Fan Combo / Auto	<b>32-4138006A</b>	\$1,079.99	<b>32-4238006A</b>	\$1,229.99
Dual Fan Combo / Man.	<b>32-4138006M</b>	\$979.99	<b>32-4238006M</b>	\$1,129.99

	Top Right / Bottom Right Connections			
	DeWitts™ Direct Fit® Pro-Series (2 Row 1" Tubes)			
	Natural		Black Ice	
Automatic	<b>32-1138007A</b>	\$599.99	<b>32-1238007A</b>	\$749.99
Manual	<b>32-1138007M</b>	\$499.99	<b>32-1238007M</b>	\$649.99
Dual Fan Combo / Auto	<b>32-4138007A</b>	\$1,209.99	<b>32-4238007A</b>	\$1,359.99
Dual Fan Combo / Man.	<b>32-4138007M</b>	\$1,109.99	<b>32-4238007M</b>	\$1,259.99

## 1971-73 MUSTANG

This radiator features two rows of 1" tubes and serpentine fins at 15 fins per inch. Connections are at the top right and bottom left. For manual or automatic transmissions.



Double Row Radiator / Manual	<b>32-1138009M</b>	\$499 <sup>99</sup>
Double Row Radiator / Automatic	<b>32-1138009A</b>	\$599 <sup>99</sup>
+Black Ice Coating / Manual	<b>32-1238009M</b>	\$649 <sup>99</sup>
+Black Ice Coating / Automatic	<b>32-1238009A</b>	\$749 <sup>99</sup>
+Dual SPAL Fan / Manual	<b>32-4138009M</b>	\$1,109 <sup>99</sup>
+Dual SPAL Fan / Automatic	<b>32-4138009A</b>	\$1,209 <sup>99</sup>
+Dual SPAL Fan / Manual / Black Ice Coating	<b>32-4238009M</b>	\$1,259 <sup>99</sup>
+Dual SPAL Fan / Automatic / Black Ice Coating	<b>32-4238009A</b>	\$1,359 <sup>99</sup>

## 1974-78 MUSTANG

This radiator features two rows of 1" tubes and serpentine fins at 15 fins per inch. Connections are at the top right and bottom left. For manual or automatic transmissions.



Manual Transmission Radiator	<b>32-1138011M</b>	\$499 <sup>99</sup>
Automatic Transmission Radiator	<b>32-1138011A</b>	\$599 <sup>99</sup>
+Black Ice Coating / Manual	<b>32-1238011M</b>	\$649 <sup>99</sup>
+Black Ice Coating / Automatic	<b>32-1238011A</b>	\$749 <sup>99</sup>
+16" SPAL Fan 1918 CFM / Manual	<b>32-4138011M</b>	\$1,109 <sup>99</sup>
+16" SPAL Fan 1918 CFM / Automatic	<b>32-4138011A</b>	\$1,209 <sup>99</sup>
+16" SPAL Fan / Manual / Black Ice Coating	<b>32-4238011M</b>	\$1,259 <sup>99</sup>
+16" SPAL Fan / Automatic / Black Ice Coating	<b>32-4238011A</b>	\$1,359 <sup>99</sup>

## 1979-93 MANUAL MUSTANG



This radiator features two rows of 1" tubes and serpentine fins at 15 fins per inch. Available for manual transmissions.



Manual Transmission Radiator	<b>32-1138012M</b>	\$499 <sup>99</sup>
Automatic Transmission Radiator	<b>32-1138012A</b>	\$599 <sup>99</sup>
+Black Ice Coating / Manual	<b>32-1238012M</b>	\$649 <sup>99</sup>
+Black Ice Coating / Automatic	<b>32-1238012A</b>	\$749 <sup>99</sup>
+Dual SPAL Fan / Manual	<b>32-4138012M</b>	\$1,109 <sup>99</sup>
+Dual SPAL Fan / Automatic	<b>32-4138012A</b>	\$1,209 <sup>99</sup>
+Dual SPAL Fan / Manual / Black Ice Coating	<b>32-4238012M</b>	\$1,259 <sup>99</sup>
+Dual SPAL Fan / Automatic / Black Ice Coating	<b>32-4238012A</b>	\$1,359 <sup>99</sup>



## 1994-96 MUSTANG

This radiator features two rows of 1" tubes and serpentine fins at 15 fins per inch. Connections are at the top right and bottom left. For manual or automatic transmissions.

Double Row Radiator / Manual	<b>32-1138013M</b>	\$499 <sup>99</sup>
Double Row Radiator / Automatic	<b>32-1138013A</b>	\$599 <sup>99</sup>



## 1997-2004 MUSTANG

This radiator features two rows of 1" tubes and serpentine fin at 15 fins per inch. Connections are top right and bottom left. Available for manual or automatic transmissions.

Double Row Radiator / Manual	<b>32-1138014M</b>	\$499 <sup>99</sup>
Double Row Radiator / Automatic	<b>32-1138014A</b>	\$599 <sup>99</sup>



## 2005-14 MUSTANG GT

This radiator features two rows of 1.25" tubes and serpentine fins at 15 fins per inch. Fits manual '05- '14 V6 & GT, '07- '09 Shelby GT.

Manual Transmission Radiator	<b>32-1138015M</b>	\$799 <sup>99</sup>
------------------------------	--------------------	---------------------



## 2015-17 MUSTANG GT

This high performance "Direct Fit"® aluminum radiator has formed aluminum end tanks that are TIG-welded to the core, eliminating failures due to cracked plastic end tanks and/or gasket leaks. This unit fits into the original mounting. The factory connections, stock fan shroud mounting, and condenser are all in place for easy installation.

Two Row 1.25" Tube	<b>32-1148035M</b>	\$999 <sup>99</sup>
Two Row 1.0" Tube	<b>32-1138035M</b>	\$799 <sup>99</sup>





# UNIVERSAL BRUSHLESS FAN KIT

An industry-exclusive solution for mounting SPAL's 300 or 500-watt brushless fans to nearly any radiator. Injection molded from a heat-resistant space-age polymer offering decades of performance and durability. Easily trimmable to fit most applications and offers full coverage on core sizes between 22.5" to 27.5" wide. A "Direct Fit™" on all models built with hat channel side supports. Includes all mounting hardware and flaps.

The SPAL brushless fans are ideal for engine and oil cooling, HVAC, and auxiliary cooling applications. These new fans were developed and designed with cutting-edge technology, high-energy ferrite magnets, and a state-of-the-art sine wave sensorless drive. These motors reach more than 82% electrical efficiency, placing our 300W and 500W power range products among the most efficient motors available anywhere. The result is high air-side performance at minimum electrical load. SBL motors are fully sealed to be IP68 and IP6K9K compliant and can operate in the presence of many aggressive or hazardous substances.



Check out the video!



32-SP480



HAT CHANNEL



DIRECT FIT®

Complete Kit (Shown)	<b>32-SP480</b>	\$749 <sup>99</sup>
Shroud Only	<b>32-SP080</b>	\$219 <sup>99</sup>

# BRUSHLESS FAN COMBOS **NEW!**

1966-1968 Big Block Corvette with Fan Kit	DeWitts™ Direct Fit® Pro-Series (2 Row 1" Tubes)				DeWitts™ LS Modified Pro-Series			
	Natural		Black Ice		Natural		Black Ice	
Manual	<b>32-5139066M</b>	\$1,574.99	<b>32-5239066M</b>	\$1,724.99	<b>32-7139066M</b>	\$1,654.99	<b>32-7239066M</b>	\$1,804.99
1969-1972 Small Block Corvette with Fan Kit	DeWitts™ Direct Fit® Pro-Series (2 Row 1" Tubes)				DeWitts™ LS Modified Pro-Series			
	Natural		Black Ice		Natural		Black Ice	
Automatic	<b>32-5139070A</b>	\$1,669.99	<b>32-5239070A</b>	\$1,819.99	<b>32-7139070A</b>	\$1,774.99	<b>32-7239070A</b>	\$1,924.99
Manual	<b>32-5139070M</b>	\$1,569.99	<b>32-5239070M</b>	\$1,719.99	<b>32-7139070M</b>	\$1,674.99	<b>32-7239070M</b>	\$1,824.99
1973-1976 Small & Big Block Corvette with Fan Kit	DeWitts™ Direct Fit® Pro-Series (2 Row 1" Tubes)				DeWitts™ LS Modified Pro-Series			
	Natural		Black Ice		Natural		Black Ice	
Automatic	<b>32-5139073A</b>	\$1,669.99	<b>32-5239073A</b>	\$1,819.99	<b>32-7139073A</b>	\$1,774.99	<b>32-7239073A</b>	\$1,924.99
Manual	<b>32-5139073M</b>	\$1,569.99	<b>32-5239073M</b>	\$1,719.99	<b>32-7139073M</b>	\$1,674.99	<b>32-7239073M</b>	\$1,824.99
1977-1982 Small & Big Block Corvette with Fan Kit	DeWitts™ Direct Fit® Pro-Series (2 Row 1" Tubes)				DeWitts™ LS Modified Pro-Series			
	Natural		Black Ice		Natural		Black Ice	
Automatic	<b>32-5139077A</b>	\$1,669.99	<b>32-5239077A</b>	\$1,819.99	<b>32-7139077A</b>	\$1,774.99	<b>32-7239077A</b>	\$1,924.99
Manual	<b>32-5139077M</b>	\$1,569.99	<b>32-5239077M</b>	\$1,719.99	<b>32-7139077M</b>	\$1,674.99	<b>32-7239077M</b>	\$1,824.99
1967-1969 Big Block Camaro with Fan Kit	DeWitts™ Direct Fit® Pro-Series (2 Row 1" Tubes)				DeWitts™ LS Modified Pro-Series			
	Natural		Black Ice		Natural		Black Ice	
Automatic	<b>32-5139022A</b>	\$1,649.99	<b>32-5239022A</b>	\$1,799.99	<b>32-7139022A</b>	\$1,754.99	<b>32-7239022A</b>	\$1,904.99
Manual	<b>32-5139022M</b>	\$1,549.99	<b>32-5239022M</b>	\$1,699.99	<b>32-7139022M</b>	\$1,684.99	<b>32-7239022M</b>	\$1,804.99
1970-1981 Camaro with Fan Kit	DeWitts™ Direct Fit® Pro-Series (2 Row 1" Tubes)				DeWitts™ LS Modified Pro-Series			
	Natural		Black Ice		Natural		Black Ice	
Automatic	<b>32-5139005M</b>	\$1,649.99	<b>32-5239005M</b>	\$1,799.99	<b>32-7139005M</b>	\$1,724.99	<b>32-7239005M</b>	\$1,874.99

## 1963-72 SB CORVETTE FAN KIT

This package is for one (1) 16" high performance "pull" fan and bracket kit. It includes a relay harness and 195 temperature switch. The fan provides 1918 CFM at 21.8 amps. These brackets are designed to fit the "pin mount" type radiator used on 1963-72 small block Corvettes only. The fan kit replaces the stock engine-driven fan and shroud.

*Note: A shroud can be used to hide the electric fan, however, slight trimming of the shroud will be necessary.*



**32-SP004** \$379<sup>99</sup>

## 16" CORVETTE FAN KIT

This package is for one (1) 16" high performance "pull" fan, bracket kit, and hardware. The kit also includes one relay harness and 195 temperature switch. Brackets are designed to fit all factory GM copper/brass radiators, Griffin aluminum radiators, and DeWitts™ "Direct Fit™" aluminum radiators. 1918 CFM with 12vdc and 21.8 amp. draw 16.22" x 15.63" x 3.45" SPAL Model 30102120.



**32-SP006** \$379<sup>99</sup>

## GM DUAL FAN KIT

DeWitts™ has created a complete kit to add a dual fan to your GM vehicle. This package includes the SPAL dual fans, two wire harnesses, two relays, and one temperature switch. Custom brackets are designed to fit all factory GM crossflow radiators, Griffin radiators, and DeWitts™ "Direct Fit®". 2720 CFM with 12vdc and 31.6 amp. draw 16.26" x 23.46" x 4.25" SPAL Model 30102052.



**32-SP460** \$549<sup>99</sup>

## C3 CORVETTE FAN KIT

This kit includes the following items: 17" SPAL brushless fan (31007090), variable temperature sensor (SBL-TS-185P), DeWitts™ custom C3 aluminum shroud, fan harness adapter (SBL-TS-HARN), and jumper harness (SBL-YEAZ-PT).



**32-SP466** \$799<sup>99</sup>

## 1984-89 CORVETTE FAN KIT

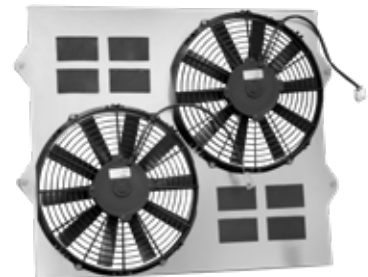
Now you can upgrade the factory 1700 CFM with this high performance (1918 CFM) fan. Fan comes with a "Direct Fit™" adapter plate, ready to bolt on and no cutting or splicing of wires is needed. We supply this fan with a harness-matching plug.



**32-SP464** \$289<sup>99</sup>

## CADILLAC CTS-V FAN KIT

Bolt on dual fan kit on an aluminum shroud.



**32-SP030** \$409<sup>99</sup>

## 1990-96 CORVETTE FAN KIT

Replace the factory fans with this 11" high performance SPAL puller fan. DeWitts™ has designed custom brackets for both factory single row cores and DeWitts™ "Direct Fit®" double row radiators. The evaporator mounting bracket must be modified, as this fan provides no supporting system.



Check out the video!



DeWitts™ 2-Row Core	<b>32-SP461</b>	\$519 <sup>99</sup>
GM Single Row Core	<b>32-SP462</b>	\$519 <sup>99</sup>

## C5 CORVETTE FAN KIT

Our C5 fan package utilizes a laser-cut aluminum shroud. The shroud incorporates four rubber flapper valves to improve airflow at high speeds and close at slower speeds. Two SPAL 12" high performance fans provide 3260 CFM, which doubles the factory output. DeWitts™ customized the fans with matching Corvette fan plugs, so no cutting or splicing is required.



All Standard height C5 models	<b>32-SP015</b>	\$499 <sup>99</sup>
DeWitts™ "Short" models for extra top clearance	<b>32-SP015-SC</b>	\$499 <sup>99</sup>

## DEWITTS FLAPS

Injection molded flaps made from thermoplastic elastomer provide a tight seal that aids the fan for increased airflow across the core. These flaps are easily mounted by drilling 1/8" holes for the tapered locking pins and square or circle exhaust holes behind the flap.



**32-991** \$3<sup>99</sup>

## C6 CORVETTE FAN UPGRADE

SPAL's dual fan package boosts airflow up 40% from stock. This fan package only fits our "Direct Fit®" radiators.

*Note: Factory wiring will need to be cut and spliced in order for the factory ECM to operate the fans.*



Dual Fan Upgrade	<b>32-SP463</b>	\$519 <sup>99</sup>
------------------	-----------------	---------------------

## C6 BRUSHLESS FAN KIT

This kit includes the SPAL 17" brushless fan: 30107090, DeWitts™ custom C6 aluminum shroud, a variable temperature control sensor (SBL-TS-185P), a fan harness adapter (SBL-TS-HARN), and a jumper harness (SBL-YAZ-PT).



**32-SP471** \$999<sup>99</sup>

## RELAY HARNESS & TEMP SWITCH



Complete Kit	<b>32-SP195FH</b>	\$139 <sup>99</sup>
Relay Harness	<b>32-SPFRH</b>	\$64 <sup>99</sup>
Switch	<b>32-SP195</b>	\$54 <sup>99</sup>

## ENGINE OIL ADAPTER LS SERIES PACKAGE



This package includes the oil adapter, GM oil seal, metric bolts, and a 1/8" NPT plug. It bolts directly to any LS series engine and provides two large #10AN connections. It is ideal for external oil coolers. This adapter has a port for the factory temperature sender and an auxiliary port for other needs.

LS Series Adapter 180 T-Stat	<b>32-892</b>	\$199 <sup>99</sup>
LS Series Adapter 212 T-Stat	<b>32-892-212</b>	\$249 <sup>99</sup>

## LS SERIES ENGINE OIL HOSE KIT



This kit includes the Improved Racing oil adapter, GM oil seal, metric bolts, and 1/8" NPT plug. Bolts directly to any LS series engine and provides two large #10AN connections. This adapter has a port for the factory temperature sender and an auxiliary port for other needs. Kit also includes (4) four steel AN fittings and two aeroquip stainless-steel hose assemblies for left-side mounted EOC.

C5 Corvette	<b>32-894C</b>	\$466 <sup>99</sup>
C6 Corvette	<b>32-894D</b>	\$466 <sup>99</sup>

## WIRING PIGTAILS **NEW!**



C6 Pigtail	<b>32-E107</b>	\$12 <sup>99</sup>
Straight Fan Adapter	<b>32-E108</b>	\$14 <sup>99</sup>
Dual Fan "Y" Adapter	<b>32-E109</b>	\$19 <sup>99</sup>

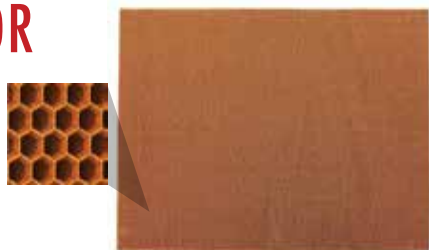
## ENGINE OIL LINES W/ BYPASS C5 / C6 CORVETTE ENGINE OIL LINES

This is a modified GM hose assembly for use with driver-side (left) EOC applications. The adapter block includes a port for the oil pressure switch on the C5 model and GM Quick Connect fittings for radiator.



C5 Corvette	<b>32-898</b>	\$349 <sup>99</sup>
C6 Corvette	<b>32-899</b>	\$349 <sup>99</sup>

## HONEYCOMB RADIATOR PROTECTOR



This guard can be placed directly in front of the radiator and will protect your aluminum radiator. Made of rigid Nomex material which is lightweight yet strong enough to take on the abuse of road debris or to combat those pesky bugs at highway speeds. Comes in 19" x 26" screen is 1/2" thick and can be easily trimmed with a utility knife to fit various radiator sizes.

19" x 26" Mesh Protector Screen	<b>32-34216</b>	\$67 <sup>99</sup>
---------------------------------	-----------------	--------------------

## DEWITTS™ FIN PICK



Keep your radiator operating at maximum efficiency. Straighten your bent or damaged radiator fin with ease using this tool. Offers a single-sided pick for prying stubborn areas and a rake end with a perfectly matched fin pitch.

	<b>32-105</b>	\$8 <sup>99</sup>
--	---------------	-------------------

## STRAIGHT SILICONE RADIATOR HOSES



These universal fit silicone radiator/coolant hoses come in 6" & 12" lengths that can be cut down to fit what you need. The 3-layer, reinforced silicone material exceeds SAE standards and is designed for today's high temp, high pressure cooling systems. These hoses are rated -100°F to +380°F.

6" Length 1.25" ID	<b>32-1006-1.25</b>	\$17 <sup>99</sup>
6" Length 1.50" ID	<b>32-1006-1.50</b>	\$17 <sup>99</sup>
6" Length 1.75" ID	<b>32-1006-1.75</b>	\$14 <sup>99</sup>
12" Length 1.25" ID	<b>32-1007-1.25</b>	\$22 <sup>99</sup>
12" Length 1.50" ID	<b>32-1007-1.50</b>	\$28 <sup>99</sup>
12" Length 1.75" ID	<b>32-1007-1.75</b>	\$33 <sup>99</sup>

## 90° SILICONE RADIATOR HOSES



These 12" long 90° silicone radiator/coolant hoses can be cut to length, allowing you to build just what you need. The 3-layer, reinforced silicone material exceeds SAE standards and is designed for today's high temp, high pressure cooling systems. These hoses are rated -100°F to +380°F.

12" Length 1.25" ID	<b>32-1010-1.25</b>	\$28 <sup>99</sup>
12" Length 1.50" ID	<b>32-1010-1.50</b>	\$28 <sup>99</sup>
12" Length 1.75" ID	<b>32-1010-1.75</b>	\$33 <sup>99</sup>

## 105° ALUMINUM RADIATOR HOSE CONNECTORS



These 105° bend aluminum tubes allow you to build custom radiator/coolant hoses. Each tube features a bead at each end to retain the hose under pressure. Tubes can be cut shorter to provide a custom-tailored fit if needed. Available in 1.5" and 1.75" OD tube sizes.

1.50" OD 105° Tube	<b>32-1003-1.50</b>	\$19 <sup>99</sup>
1.75" OD 105° Tube	<b>32-1003-1.75</b>	\$19 <sup>99</sup>

## 45° SILICONE RADIATOR HOSES



These 12" long 45° silicone radiator/coolant hoses can be cut to length, allowing you to build just what you need. The 3-layer, reinforced silicone material exceeds SAE standards and is designed for today's high temp, high pressure cooling systems. These hoses are rated -100°F to +380°F.

12" Length 1.25" ID	<b>32-1008-1.25</b>	\$29 <sup>99</sup>
12" Length 1.50" ID	<b>32-1008-1.50</b>	\$29 <sup>99</sup>
12" Length 1.75" ID	<b>32-1008-1.75</b>	\$33 <sup>99</sup>

## 90° ALUMINUM RADIATOR HOSE CONNECTORS



These 90° bend aluminum tubes allow you to build custom radiator / coolant hoses. Each tube features a bead at each end to retain the hose under pressure. Tubes can be cut shorter to provide a custom-tailored fit if needed. Available in 1.25", 1.5", and 1.75" OD tube sizes.

1.25" OD 90° Tube	<b>32-1001-1.25</b>	\$19 <sup>99</sup>
1.50" OD 90° Tube	<b>32-1001-1.50</b>	\$19 <sup>99</sup>
1.75" OD 90° Tube	<b>32-1001-1.75</b>	\$19 <sup>99</sup>

## 135° ALUMINUM RADIATOR HOSE CONNECTORS



These 135° bend aluminum tubes allow you to build custom radiator/coolant hoses. Each tube features a bead at each end to retain the hose under pressure. Tubes can be cut shorter to provide a custom-tailored fit if needed. Available in 1.25", 1.5", and 1.75" OD tube sizes.

1.25" OD 135° Tube	<b>32-1005-1.25</b>	\$22 <sup>99</sup>
1.50" OD 135° Tube	<b>32-1005-1.50</b>	\$22 <sup>99</sup>
1.75" OD 135° Tube	<b>32-1005-1.75</b>	\$22 <sup>99</sup>

**DEWITTS™ HIGH PERFORMANCE**

# COOLANT

In order to maximize the life of your radiator, we recommend you purchase a pre-mixed coolant to ensure the proper water quality and eliminate the need for mixing. Our DeWitts™ High Performance Coolant pairs perfectly with our radiators to provide you with maximum cooling under the most strenuous conditions.

## FEATURES & BENEFITS

- Premium quality, ready-to-use formula premixed at 50/50 with deionized water.
- Protects from -34° to +265°F using 15lb cap.
- Meets or exceeds GM, Ford, and Chrysler applications.
- Compatible with national brand coolants and liquid coolant additives.
- Special anti-foam agents will reduce pump cavitation and increase cooling capacity.
- DeWitts™ patented universal low-silicate formula offers maximum corrosion protection.
- Advanced additive package.
- Better thermal conductivity and heat transfer than any propylene glycol coolants.
- Green, 100% biodegradable in its unused form.
- 3 year/36,000 mile guarantee.



**DEWITTS™ HIGH  
PERFORMANCE COOLANT  
PART # 32-305**

**\$33<sup>99</sup>**

**CALL OR VISIT US ONLINE  
TO ORDER TODAY!.**

**[www.DeWitts.com](http://www.DeWitts.com)  
517-548-0600**



*Disposal of used antifreeze/coolant: Follow local laws and regulations. If required, dispose at facilities licensed to accept household hazardous waste. If permitted, dispose in sanitary sewer systems. Do not discard into storm sewers, septic systems or onto the ground.*



**ABOUT US** DeWitts™ aluminum radiators are assembled in Michigan, where we control the manufacturing process internally. Our comprehensive production process includes cutting, forming, fitting, brazing, welding, and the crafting of premium cooling products, ensuring that we can cater to your specific cooling requirements. We are a Direct Fit® in our trade, which is also a promise our product will do the same. A team of experts guides premium materials through a specialized manufacturing process to create functional art. Original shapes and refined finishes provide a complete look you will be proud of, with the insurance of a lifetime warranty.

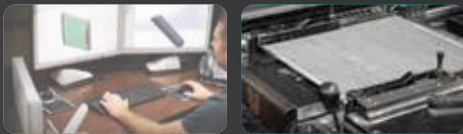
**MADE BY EXPERTS**

The manufacturing process is internally managed through a comprehensive production system.



**LEADING ENGINEERING**

DeWitts engineering professionals create custom cooling solutions using advanced software, rigorous testing procedures, and a library of tube specifications, side supports, tank features, and fin designs.



**ADVANCED MANUFACTURING**

Robotics, lasers, and Cold Metal Transfer technology contribute to the manufacturing process. The on-site controlled atmosphere brazing furnace produces the finest aluminum cores in the industry.



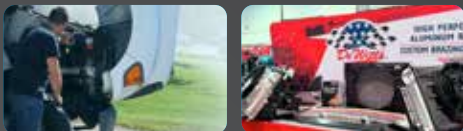
**ISO 9001:2015 CERTIFICATION**

Our proven commitment to quality is held to an international standard of organization.



**PROJECT CONSULTATION**

DeWitts can design, develop, test, and deliver your needs from concept to fit-up.



**MARKETS**

- ORIGINAL EQUIPMENT
- RESTORATION
- INDUSTRIAL
- COMMERCIAL
- MOTORSPORTS
- HEAVY DUTY TRUCK
- AGRICULTURE
- TRANSPORTATION
- POWERSPORTS



**APPLICATIONS**

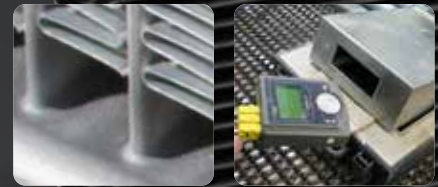
- RADIATORS
- HEATER CORES
- TRANSMISSION COOLERS
- OIL COOLERS
- HVAC
- SHROUDS
- CHARGE AIR COOLERS
- RESERVOIRS/TANKS

**FINISH**

An OE or custom look is available on products for nearly every make and model. Our Black Ice coating completes your engine bay with both function and durability.

**QUALITY CONTROL**

Every part of a core is important, but the quality of the headers is an absolute must. A precise tube fit and a double-sided clad bond give every tube two fillets for double strength. Specific recipes are developed and monitored to ensure a proper braze profile for every core. The majority of DeWitts radiators are assembled with press-formed end tanks, providing an original look. This also eliminates the fabrication seams and potential leak points of a common box tank.



Visit our website for additional  
information and tech tips.

[WWW.DEWITTS.COM](http://WWW.DEWITTS.COM)



**DeWitts Radiator**  
29988 Anthony Drive  
Wixom, Michigan 48393

☎ 517-548-0600

