



HIGH PERFORMANCE  
ALUMINUM RADIATORS

2016





# ABOUT

DeWitts aluminum radiators are made in Michigan and 100% of the manufacturing process is managed in house. Our CAB brazing furnace allows us to produce the finest aluminum cores in the industry. We have the capability to build custom aluminum radiators with a variety of tube widths and fin designs. We have several fin machines to produce the type of fin required for your application. Most of our radiators are assembled with press formed end tanks. This eliminates the fabrication seams and potential leak points of a common box tank. It also provides an original look for those classic cars. Every radiator is available with our Black Ice™ Coating. We have expanded our line to many other makes and models. If you do not see your application listed, just give us call and we'll custom build one for you.



## MADE IN THE USA

Located in Howell Michigan, all of our products are made with USA material and labor. You will see the high quality difference in our final product.



## MANUFACTURING

DeWitts Radiator is a unique company because we control 100% of the manufacturing process in house. We assemble and braze our own cores, to ensure quality throughout the total process.



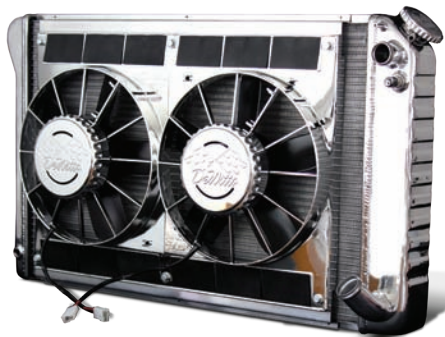
## PREMIUM QUALITY

DeWitts is the only USA aftermarket radiator company that owns an aluminum Nocolok® brazing furnace. This equipment is required to produce quality, epoxy free, aluminum cores.

## BUILDING YOUR PART NUMBER

1	1	3	9	070	A
SERIES (radiator type)	FINISH	CORE DESIGN (number of rows and tube size)	OEM	ID#	COOLER OPTION
1 = DIRECT FIT RADIATOR	1 = NATURAL	1 = SINGLE 1.25"	9 = GM	XXX	A = AUTOMATIC TRANS.
2 = CUSTOM FIT RADIATOR	2 = BLACK ICE	2 = SINGLE 1.5"	8 = FORD	XXX	M = MANUAL TRANS.
4 = RADIATOR/FAN COMBO	3 = POLISHED	3 = DUAL 1"	7 = MOPAR	XXX	E = ENGINE OIL
6 = LS SERIES RADIATOR	4 = TBD	4 = DUAL 1.25"	6 = JEEP	XXX	B = EOC AND TOC

In the above sample, the model number indicates a "direct fit" line radiator (1), with a natural finish (1), and two rows of 1" tubes (3). This is our standard radiator and the quickest delivery item. However, any part number can be customized to meet your requirements.



## LS SERIES CONVERSIONS

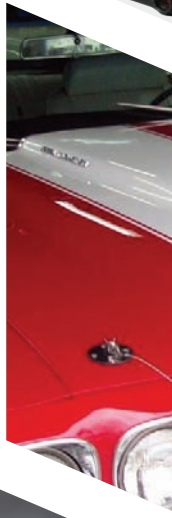
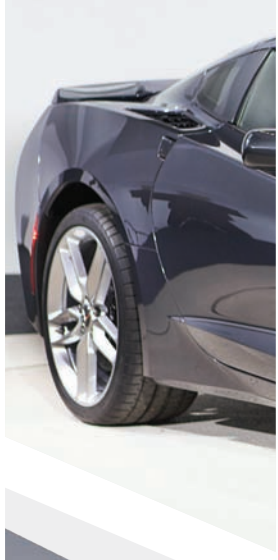
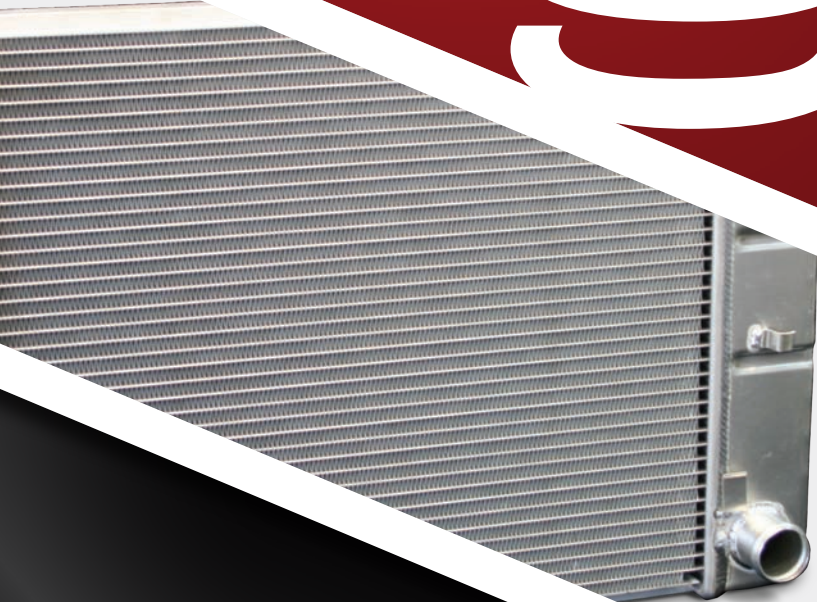
All of our aluminum radiators can be configured for your LS engine upgrade. Simply find the standard application number in this guide and replace the first number with the numeral 6. This indicates the application is for a LS engine and we will change the inlet and outlet connections to match the new engine. All LS series packages include an electric fan mounted directly to the radiator, and the electrical wiring. We also add a small connection for steam line.



## BLACK ICE COATING

Our Black Ice option is a special two part epoxy paint. It is applied in a spray and adheres to the aluminum and will not ever flake or peel off. It is a semi-gloss finish that will give the radiator the look of an original copper/brass unit. The total thickness of the dried product is only .002" thick and it will not affect the cooling performance whatsoever.

# CONTENTS





**CORVETTE** 6

**CAMARO** 12

**CHEVELLE** 14

**CHEVY** 16

**LS & MODIFIED** 18

**MUSTANG** 28

**ACCESSORIES** 32

**SPAL FANS** 34

**CONTACT** 35

# 1955-60 CORVETTE

This aluminum radiator is the ONLY true “direct fit” radiator on the market. It features the correct “press formed” aluminum tanks and factory type side brackets. It doubles the cooling capacity and weighs only 12lbs.



Manual Transmission Radiator	Model: <b>1139055M</b>	\$629 <sup>99</sup>
Automatic Transmission Radiator	Model: <b>1139055A</b>	\$659 <sup>99</sup>
+ Black Ice Coating	Model: <b>1239055M</b>	\$689 <sup>99</sup>
+ Spal 16” Fan (2360 cfm 21.6 amps)*	Model: <b>4139055M</b>	\$889 <sup>99</sup>
+ Low Profile Spal 16” Fan (1610 cfm @ 11 amps)	Model: <b>4139058M</b>	\$889 <sup>99</sup>

*\*Due to the fan motor size, there may be interference with the factory suspension on 1958-60 model Corvettes. This package should only be used on cars with alternator conversions.*

# 1961-62 CORVETTE



Features a double row (1.0” tubes) core and the same cast aluminum necks used on the original radiator. It will fit into the core support without any modifications and it offers 25% more cooling than replacement copper/brass radiators.



Manual Transmission Radiator	Model: <b>1139061M</b>	\$529 <sup>99</sup>
Automatic Transmission Radiator	Model: <b>1139061A</b>	\$559 <sup>99</sup>
+ Black Ice Coating	Model: <b>1239061M</b>	\$589 <sup>99</sup>
+ Spal 16” Fan	Model: <b>4139061M</b>	\$809 <sup>99</sup>

# 1963-72 CORVETTE

(See Application Notes)



This double row aluminum radiator is offered as an alternate to the original plate type (941) radiator. While its BTU rating (4100) is slightly less than the original, it is still 25% better than the copper replacement radiators. Note the design uses many of the same original parts used in the factory design, including the inlet and outlet tank.



Manual Transmission Radiator	Model: <b>1139063M</b>	\$529 <sup>99</sup>
Automatic Transmission Radiator (Option for 63-67 only.)	Model: <b>1139063A</b>	\$559 <sup>99</sup>
+ Black Ice Coating	Model: <b>1239063M</b>	\$589 <sup>99</sup>
+ 1 1/4” wide tubes*	Model: <b>1149063M</b>	\$659 <sup>99</sup>
+ Spal Fan (2360 cfm 21.6 amps)	Model: <b>4139063M</b>	\$809 <sup>99</sup>
+ Black Spal Fan (2360 cfm 21.6 amps)	Model: <b>4239063M</b>	\$869 <sup>99</sup>

See Spal category model SP004 for add-on fan kit.

*\*A great choice for cars with AC and modified motors.*

Notes: this “pin mount” type radiator was used on all ‘63-’67 SB Corvettes. It was also used on 68-72 SB base cars with no automatic transmission, AC, or optional engines.

# 1965 BIG BLOCK CORVETTE

Replacement aluminum radiator for 1965 big block engines.

Also fits 67-69 L88 cars.



Manual Transmission Radiator

Model: **1139065M** \$529<sup>99</sup>

# 1966-68 BIG BLOCK CORVETTE

(Also fits: 68 SB with Auto or AC)



DeWitts manufactures a high performance two row aluminum radiator that is a direct fit for all 66-68 big block Corvettes. **This model also fits 1968 small block engines that were equipped with automatic trans or AC.** This radiator will provide 25% more cooling than the stock four row copper radiator. It features the same size and configuration inlet and outlet, factory type channels, and press formed end tanks. No modifications are required. Models 1139066M & 1139066A are our standard design core with two 1" tubes and serpentine fins at 15 FPI.



Manual Transmission Radiator

Model: **1139066M** \$529<sup>99</sup>

Automatic Transmission Radiator

Model: **1139066A** \$559<sup>99</sup>

+ Black Ice Coating / Manual

Model: **1239066M** \$589<sup>99</sup>

+ Black Ice Coating / Automatic

Model: **1239066A** \$619<sup>99</sup>

SPECIAL 23.5" aluminum radiator / Spal dual 11" fan

Model: **4139066M** \$969<sup>99</sup>

SPECIAL 23.5" aluminum radiator / Spal dual 11" fan / Black Ice Coating

Model: **4239066M** \$1029<sup>99</sup>

HP Series / 1.25" tubes

Model: **1149066M** \$659<sup>99</sup>

HP Series / 1.25" tubes / Black Ice Coating

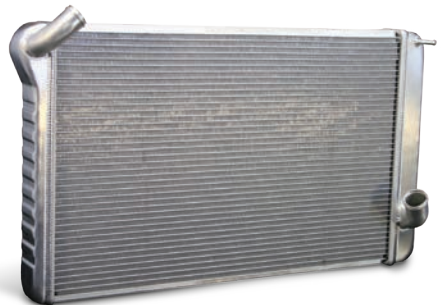
Model: **1249066M** \$719<sup>99</sup>

See Spal category model SP004 for add-on fan kit.

# 1969-72 BIG BLOCK CORVETTE



This is a true "direct fit" aluminum radiator for 1969-72 big block engine Corvettes. Unlike other "universal" aftermarket radiators, this model features the correct 27.5" core, factory type upper channels, stock hose connections, and press formed tanks. It is also epoxy free. No cutting or modifying is required. This radiator features two rows of one inch wide tubes and will provide 30% more cooling than an equal size four row copper radiator.



Manual Transmission Radiator

Model: **1139069M** \$529<sup>99</sup>

Automatic Transmission Radiator

Model: **1139069A** \$559<sup>99</sup>

+ Black Ice Coating / Manual

Model: **1239069M** \$589<sup>99</sup>

+ Black Ice Coating / Automatic

Model: **1239069A** \$619<sup>99</sup>

+ Dual Spal Fan SP460 / Manual

Model: **4139069M** \$969<sup>99</sup>

+ Dual Spal Fan SP460 / Automatic

Model: **4139069A** \$999<sup>99</sup>

# 1969-72 SMALL BLOCK CORVETTE



This radiator is for all 1969-72 350 small block Corvettes with automatic transmission or AC. This “direct fit” aluminum radiator features factory type press formed end tanks, dual row core, serpentine fins, and the factory type upper and lower channels. This radiator will provide 30% more cooling than the stock copper unit with half the weight and is epoxy free. It will fit into the stock core support and uses the original factory hoses. Absolutely no modifications are required. **(Also fits LT1 & L46 option cars.)**



Manual Transmission Radiator	Model:	<b>1139070M</b>	\$529 <sup>99</sup>
Automatic Transmission Radiator	Model:	<b>1139070A</b>	\$559 <sup>99</sup>
+ Black Ice Coating / Manual	Model:	<b>1239070M</b>	\$589 <sup>99</sup>
+ Black Ice Coating / Automatic	Model:	<b>1239070A</b>	\$619 <sup>99</sup>
+ Dual Spal Fan SP460 / Manual	Model:	<b>4139070M</b>	\$969 <sup>99</sup>
+ Dual Spal Fan SP460 / Automatic	Model:	<b>4139070A</b>	\$999 <sup>99</sup>

# 1973-76 CORVETTE



This “direct fit” aluminum radiator features factory type press formed end tanks, dual row core, serpentine fins, and the factory type upper and lower channels. This radiator will provide 30% more cooling than the stock copper unit with half the weight and is epoxy free. It will fit into the stock core support and uses the original factory hoses.



Manual Transmission Radiator	Model:	<b>1139073M</b>	\$529 <sup>99</sup>
Automatic Transmission Radiator	Model:	<b>1139073A</b>	\$559 <sup>99</sup>
+ Black Ice Coating / Manual	Model:	<b>1239073M</b>	\$589 <sup>99</sup>
+ Black Ice Coating / Automatic	Model:	<b>1239073A</b>	\$619 <sup>99</sup>
+ Dual Spal Fan SP460 / Manual	Model:	<b>4139073M</b>	\$969 <sup>99</sup>
+ Dual Spal Fan SP460 / Automatic	Model:	<b>4139073A</b>	\$999 <sup>99</sup>

# 1977-82 CORVETTE



This “direct fit” aluminum radiator features factory type press formed end tanks, dual row core, serpentine fins, and the factory type upper and lower channels. This radiator will provide 30% more cooling than the stock copper unit with half the weight and is epoxy free. It will fit into the stock core support and uses the original factory hoses. Heavy duty rubber cushion are included. Fits all 77-82 Corvettes with automatic and manual transmissions.



Manual Transmission Radiator	Model:	<b>1139077M</b>	\$529 <sup>99</sup>
Automatic Transmission Radiator	Model:	<b>1139077A</b>	\$559 <sup>99</sup>
+ Black Ice Coating / Manual	Model:	<b>1239077M</b>	\$589 <sup>99</sup>
+ Black Ice Coating / Automatic	Model:	<b>1239077A</b>	\$619 <sup>99</sup>
+ Dual Spal Fan SP460 / Manual	Model:	<b>4139077M</b>	\$969 <sup>99</sup>
+ Dual Spal Fan SP460 / Automatic	Model:	<b>4139077A</b>	\$999 <sup>99</sup>
+ HP Core - 2 row 1.25” tubes / Manual	Model:	<b>1149077M</b>	\$659 <sup>99</sup>
+ HP Core - 2 row 1.25” tubes / Automatic	Model:	<b>1149077A</b>	\$689 <sup>99</sup>



## 1984-89 CORVETTE

Features two rows of 1" tubes and press formed end tanks. This doubles the cooling capacity of the original single row units. This design eliminates failures due to cracked plastic end tanks and/or gasket leaks. This model fits both automatic transmission and 4 + 3 models. To simplify installation, custom mounting cushions are included.



Double Row Radiator / Automatic

Model: **1139084A** \$559<sup>99</sup>

The single row radiator features 1-1/2" tubes. This design increases cooling surfaces by 50% over the stock unit. This unit uses the same full size aluminum end tanks from our double row, increasing fluid capacity.

Single Row Radiator / Automatic

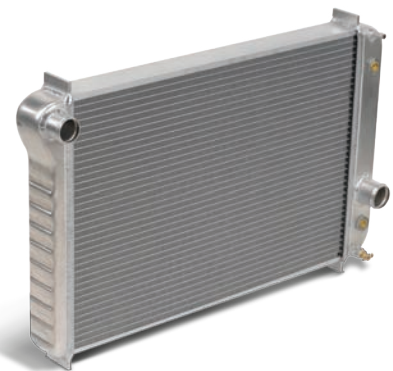
Model: **1129084A** \$379<sup>99</sup>



## 1990-96 CORVETTE



Features two rows of 1" tubes and press formed end tanks. This doubles the cooling capacity of the original single row units. This unit fits into the original mounting however, GM did not allow any room for a thicker core and therefore it is impossible to make a true "direct fit". The upper two rubber cushions must be trimmed slightly to accommodate the larger core. We include spacer plates and hardware so no shroud cutting is required.



Double Row Radiator / Automatic

Model: **1139090A** \$559<sup>99</sup>

Double Row Radiator / Manual

Model: **1139090M** \$529<sup>99</sup>

The single row radiator features 1-1/2" tubes. This design increases cooling surfaces by 50% over the stock unit. This unit uses the same full size aluminum end tanks from our double row, increasing fluid capacity.

Single Row Radiator / Automatic

Model: **1129090A** \$379<sup>99</sup>

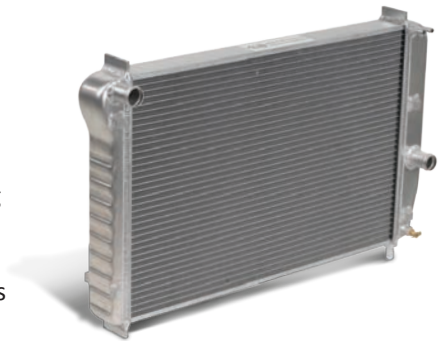
Single Row Radiator / Manual

Model: **1129090M** \$349<sup>99</sup>

# C5 ALUMINUM RADIATOR



This high performance “direct fit” aluminum radiator features two rows of 1” cooling tubes, doubling the cooling capacity of the factory single row. The press formed aluminum end tanks are TIG-welded to the core, eliminating failures due to cracked plastic end tanks and/or gasket leaks. This unit fits into the original mounting and has all the factory connections.



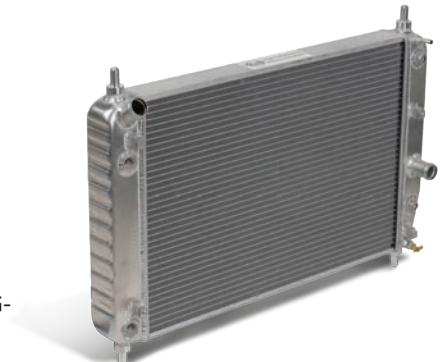
	1997-2000 Manual Transmission Radiator	Model: <b>1139097M</b>	\$579 <sup>99</sup>
	1997-2000 Automatic Transmission Radiator	Model: <b>1139097A</b>	\$659 <sup>99</sup>
	1997-2000 EOC / TOC Radiator	Model: <b>1139097B</b>	\$729 <sup>99</sup>
	2001-2004 Automatic Transmission Radiator	Model: <b>1139101A</b>	\$659 <sup>99</sup>
	2001-2004 EOC/TOC Radiator	Model: <b>1139101B</b>	\$729 <sup>99</sup>
	EOC Radiator (left side engine oil cooler)	Model: <b>1139097E</b>	\$659 <sup>99</sup>
SHORT	1997-2000 Manual Transmission Radiator (See Note)	Model: <b>1139197M</b>	\$579 <sup>99</sup>
SHORT	1997-2000 Automatic Transmission Radiator (See Note)	Model: <b>1139197A</b>	\$659 <sup>99</sup>
SHORT	1997-2000 EOC / TOC Radiator (See Note)	Model: <b>1139197B</b>	\$729 <sup>99</sup>
SHORT	EOC Radiator (left side engine oil cooler) (See Note)	Model: <b>1139197E</b>	\$659 <sup>99</sup>
SHORT	2001-2004 TOC Radiator (See Note)	Model: <b>1139111A</b>	\$659 <sup>99</sup>
SHORT	2001-2004 EOC / TOC Radiator (See Note)	Model: <b>1139111B</b>	\$729 <sup>99</sup>

Note: DeWitts offers custom “short” models to provide extra clearance to make room for supercharger packages.

# C6 ALUMINUM RADIATOR



This “direct fit” radiator features two rows of 1” tubes, which doubles the cooling capacity of a factory single row. Our exclusive “press formed” end tanks are hand TIG-welded by expert craftsman, eliminating the factory plastic tanks.



	2005-2006 Z51 EOC & TOC Radiator	Model: <b>1139105B</b>	\$799 <sup>99</sup>
	No Cooler / NON-Z51 / Manual Transmission only	Model: <b>1139105M</b>	\$629 <sup>99</sup>
	EOC Radiator	Model: <b>1139105E</b>	\$709 <sup>99</sup>
	TOC Radiator	Model: <b>1139105A</b>	\$709 <sup>99</sup>
	2009-2013 ZR1 Radiator	Model: <b>1139109Z</b>	\$949 <sup>99</sup>
SHORT	2005-2006 Z51 EOC & TOC Radiator (See Note)	Model: <b>1139125B</b>	\$799 <sup>99</sup>
SHORT	No Cooler / NON-Z51 / Manual Transmission only (See Note)	Model: <b>1139125M</b>	\$629 <sup>99</sup>
SHORT	EOC Radiator (See Note)	Model: <b>1139125E</b>	\$709 <sup>99</sup>
SHORT	2005-2011 Z06/C6 Automatic Transmisson Radiator (See Note)	Model: <b>1139125A</b>	\$709 <sup>99</sup>

Note: DeWitts offers custom “short” models to provide extra clearance to make room for supercharger packages.

# C7 ALUMINUM RADIATOR



Double row radiator for C7 Corvettes featuring a lower serpentine fin design, additional rows of tubes, dimpled tubing for increased turbulation, and a narrow tank for easier installation.

2014 Manual Transmission Radiator  
\*Fits all C7, including Z06.

Model: **1139114M** \$799<sup>99</sup>

# CORVETTE RESTORATION RADIATORS

DeWitts exclusive Restoration Radiators™ are 100% exact reproductions for all 1960-1972 Corvettes. This “stacked plate” type radiator is the ultimate in performance and is brazed with today’s state of the art techniques. Each radiator is uniquely date coded, to match your Corvette build date.



Model Year	GM Part#	Details		Price
1960-1961	3157516	Flat Top Tank	Model: <b>940A</b>	\$1199 <sup>99</sup>
1960-1961	3151116	Top Tank With Ribs	Model: <b>940B</b>	\$1199 <sup>99</sup>
1961	3150916	Non-Painted / Bump Casting	Model: <b>943A</b>	\$999 <sup>99</sup>
1961	3150916	Painted / Bump Casting	Model: <b>943B</b>	\$999 <sup>99</sup>
1962	3150916	Flat Casting / Tag Dated	Model: <b>944A</b>	\$999 <sup>99</sup>
1962	3150916	Flat Casting / Stamp Dated	Model: <b>944B</b>	\$999 <sup>99</sup>
1965-1972	3155316	1" Wide Mount	Model: <b>941</b>	\$999 <sup>99</sup>
1963-1972	3155316	No Detailing	Model: <b>941B</b>	\$949 <sup>99</sup>
1963-1964	3155316	2" Wide Mount	Model: <b>942</b>	\$999 <sup>99</sup>
1965 396 & L88	3007436	2nd Design Curved Neck	Model: <b>955</b>	\$1199 <sup>99</sup>
1965	-	1965 / 396 Early Restoration	Model: <b>945</b>	\$1199 <sup>99</sup>

# RESTORATION COPPER / BRASS RADIATORS

Model Year	Details		Price
1966	66 Big Block Corvette Copper/ Brass radiator	Model: <b>BC66M</b>	\$899 <sup>99</sup>
1967-1968	67-68 Big Block Corvette Copper/ Brass radiator	Model: <b>BC67M</b>	\$899 <sup>99</sup>



For more information about the history and details of construction on our Restoration Radiators™ please visit [www.DeWitts.com](http://www.DeWitts.com)



## 1967-69 BIG BLOCK CAMARO

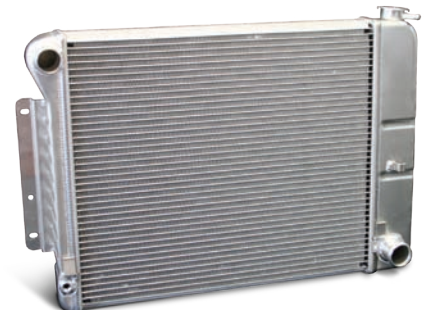
This is a true “direct fit” aluminum radiator for 1967-69 Camaros with big block engines. Unlike other “universal” aftermarket radiators, this model features the factory type upper channels, stock hose connections, and press formed tanks. It is also epoxy free. No cutting or modifying is required. This radiator features two rows of 1” wide tubes and will provide 30% more cooling than an equal size four row copper radiator.



Manual Transmission Radiator	Model: <b>1139022M</b>	\$529 <sup>99</sup>
Automatic Transmission Radiator	Model: <b>1139022A</b>	\$559 <sup>99</sup>
+ Black Ice Coating / Manual	Model: <b>1239022M</b>	\$589 <sup>99</sup>
+ Black Ice Coating / Automatic	Model: <b>1239022A</b>	\$619 <sup>99</sup>
+ Dual Spal Fan / Manual	Model: <b>4139022M</b>	\$969 <sup>99</sup>
+ Dual Spal Fan / Automatic	Model: <b>4139022A</b>	\$999 <sup>99</sup>
+ Dual Spal Fan / Manual / Black Ice Coating	Model: <b>4239022M</b>	\$1029 <sup>99</sup>
+ Dual Spal Fan / Automatic / Black Ice Coating	Model: <b>4239022A</b>	\$1059 <sup>99</sup>

## 1967-69 SMALL BLOCK / Z28 CAMARO

This is a true “direct fit” aluminum radiator for 1967-69 Camaros. Unlike other “universal” aftermarket radiators, this model features the factory type upper channels, stock hose connections, and press formed tanks. It is also epoxy free. No cutting or modifying is required. This radiator features two rows of 1” wide tubes and will provide 30% more cooling than an equal size four row copper radiator.



Manual Transmission Radiator	Model: <b>1139004M</b>	\$529 <sup>99</sup>
Automatic Transmission Radiator	Model: <b>1139004A</b>	\$559 <sup>99</sup>
+ Black Ice Coating / Manual	Model: <b>1239004M</b>	\$589 <sup>99</sup>
+ Black Ice Coating / Automatic	Model: <b>1239004A</b>	\$619 <sup>99</sup>

## 1970-81 CAMARO

This is a true “direct fit” aluminum radiator for 1970-81 Camaros. Unlike other “universal” aftermarket radiators, this model features the factory type upper channels, stock hose connections, and press formed tanks. It is also epoxy free. No cutting or modifying is required. This radiator features two rows of 1” wide tubes and will provide 30% more cooling than an equal size four row copper radiator.



Manual Transmission Radiator	Model: <b>1139005M</b>	\$529 <sup>99</sup>
Automatic Transmission Radiator	Model: <b>1139005A</b>	\$559 <sup>99</sup>
+ Black Ice Coating / Manual	Model: <b>1239005M</b>	\$589 <sup>99</sup>
+ Black Ice Coating / Automatic	Model: <b>1239005A</b>	\$619 <sup>99</sup>
+ Dual Spal Fan / Manual	Model: <b>4139005M</b>	\$969 <sup>99</sup>
+ Dual Spal Fan / Automatic	Model: <b>4139005A</b>	\$999 <sup>99</sup>
+ Dual Spal Fan / Manual / Black Ice Coating	Model: <b>4239005M</b>	\$1029 <sup>99</sup>
+ Dual Spal Fan / Automatic / Black Ice Coating	Model: <b>4239005A</b>	\$1059 <sup>99</sup>

## 1993-2002 CAMARO

This new high performance “direct fit” aluminum radiator features two rows of 1” cooling tubes, doubling the cooling capacity of the factory single row. The press formed aluminum end tanks are TIG-welded to the core, eliminating failures due to cracked plastic end tanks and/or gasket leaks. This unit fits into the original mounting and has all the factory connections and an automatic transmission cooler with factory flare connections.

Manual Transmission Radiator	Model: <b>1139007M</b>	\$529 <sup>99</sup>
Automatic Transmission Radiator	Model: <b>1139007A</b>	\$559 <sup>99</sup>

## 2010-11 CAMARO HIGH PERFORMANCE

This new high performance “direct fit” aluminum radiator features two rows of 1” cooling tubes, doubling the cooling capacity of the factory single row. The formed aluminum end tanks are TIG-welded to the core, eliminating failures due to cracked plastic end tanks and/or gasket leaks. This unit fits into the original mounting. The factory connections, automatic transmission cooler with factory flare, stock fan shroud mounting and condenser are all in place for easy installation. Fits all 2010 & 2011 Camaros.



Automatic Transmission Radiator	Model: <b>1139008A</b>	\$629 <sup>99</sup>
---------------------------------	------------------------	---------------------

## 2012-15 CAMARO HIGH PERFORMANCE

This new high performance “direct fit” aluminum radiator features two rows of 1” cooling tubes, doubling the cooling capacity of the factory single row. The formed aluminum end tanks are TIG-welded to the core, eliminating failures due to cracked plastic end tanks and/or gasket leaks. This unit fits into the original mounting. The factory connections, automatic transmission cooler with factory flare, stock fan shroud mounting and condenser are all in place for easy installation. Fits all 2012-15 Camaros (except for 2015 Z28, coming soon).



Automatic Transmission Radiator	Model: <b>1139009A</b>	\$629 <sup>99</sup>
---------------------------------	------------------------	---------------------



## 1964-65 CHEVELLE

This radiator is a “direct fit” for all 1964-65 Chevilles with small block engines and automatic or manual transmissions. Inlet and outlet are on the passenger side. This radiator features factory type press formed end tanks, dual row core, and serpentine fins. This radiator will provide 30% more cooling than the stock copper unit and half the weight. It is also epoxy free. It will fit into the stock core support and uses the original factory hoses.



Manual Transmission Radiator	Model: <b>1139001M</b>	\$529 <sup>99</sup>
Automatic Transmission Radiator (TOC)	Model: <b>1139001A</b>	\$559 <sup>99</sup>
+ Black Ice Coating / Manual	Model: <b>1239001M</b>	\$589 <sup>99</sup>
+ Black Ice Coating / Automatic	Model: <b>1239001A</b>	\$619 <sup>99</sup>
+ Dual Spal Fan / Manual	Model: <b>4139001M</b>	\$969 <sup>99</sup>
+ Dual Spal Fan / Automatic	Model: <b>4139001A</b>	\$999 <sup>99</sup>
+ Dual Spal Fan / Manual / Black Ice Coating	Model: <b>4239001M</b>	\$1029 <sup>99</sup>
+ Dual Spal Fan / Automatic / Black Ice Coating	Model: <b>4239001A</b>	\$1059 <sup>99</sup>

Visit our website for additional information and tech tips.

[www.dewitts.com](http://www.dewitts.com)

# 1966-67 CHEVELLE



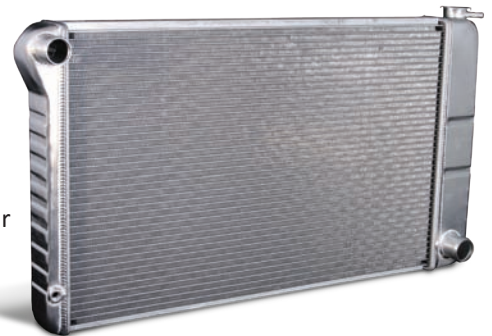
This radiator is a “direct fit” for all 1966-67 “A” body Chevelles with BB engines and automatic or manual transmissions. Also fits SB Chevelles with AC. Features include factory type press formed end tanks, dual row core, and serpentine fins. This radiator will provide 30% more cooling than the stock copper unit and half the weight. It is also epoxy free. It will fit into the stock core support and uses the original factory hoses.



Manual Transmission Radiator	Model: <b>1139002M</b>	\$529 <sup>99</sup>
Automatic Transmission Radiator (TOC)	Model: <b>1139002A</b>	\$559 <sup>99</sup>
+ Black Ice Coating / Manual	Model: <b>1239002M</b>	\$589 <sup>99</sup>
+ Black Ice Coating / Automatic	Model: <b>1239002A</b>	\$619 <sup>99</sup>
+ Dual Spal Fan 2760CFM / Manual	Model: <b>4139002M</b>	\$969 <sup>99</sup>
+ Dual Spal Fan 2760CFM / Automatic	Model: <b>4139002A</b>	\$999 <sup>99</sup>
+ Dual Spal Fan 2760CFM / Manual / Black Ice Coating	Model: <b>4239002M</b>	\$1029 <sup>99</sup>
+ Dual Spal Fan 2760CFM / Automatic / Black Ice Coating	Model: <b>4239002A</b>	\$1059 <sup>99</sup>

# 1968-72 CHEVELLE

This radiator is a “direct fit” for all 1968-72 BB and manual or automatic transmissions. Also fits SB Chevelles with AC. This radiator features factory type press formed end tanks, dual row core, serpentine fins, and the factory type upper and lower channels. This radiator will provide 30% more cooling than the stock copper unit and half the weight. It is also epoxy free. It will fit into the stock core support and uses the original factory hoses. (Features an internal transmission cooler for automatics.)



Manual Transmission Radiator	Model: <b>1139003M</b>	\$529 <sup>99</sup>
Automatic Transmission Radiator	Model: <b>1139003A</b>	\$559 <sup>99</sup>
+ Black Ice Coating / Manual	Model: <b>1239003M</b>	\$589 <sup>99</sup>
+ Black Ice Coating / Automatic	Model: <b>1239003A</b>	\$619 <sup>99</sup>
+ Dual Spal Fan / Manual	Model: <b>4139003M</b>	\$969 <sup>99</sup>
+ Dual Spal Fan / Automatic	Model: <b>4139003A</b>	\$999 <sup>99</sup>
+ Dual Spal Fan / Manual / Black Ice Coating	Model: <b>4239003M</b>	\$1029 <sup>99</sup>
+ Dual Spal Fan / Automatic / Black Ice Coating	Model: <b>4239003A</b>	\$1059 <sup>99</sup>
+ High Performance / Dual Spal Fan	Model: <b>4149003M</b>	\$1059 <sup>99</sup>

# 1955-57 V8 POSITION CHEVY

High performance two row aluminum radiator for small block and big block engines. Eight cylinder mount - to fit all factory V8 cars. Bare aluminum finish. Automatic option comes with factory style transmission cooler with factory line connections in the stock locations.



Manual Transmission Radiator	<i>Model:</i> <b>1139012M</b>	\$529 <sup>99</sup>
Automatic Transmission Radiator	<i>Model:</i> <b>1139012A</b>	\$559 <sup>99</sup>
+ Black Ice Coating / Manual	<i>Model:</i> <b>1239012M</b>	\$589 <sup>99</sup>
+ Black Ice Coating / Automatic	<i>Model:</i> <b>1239012A</b>	\$619 <sup>99</sup>



# 1955-57 6 CYLINDER POSITION CHEVY

High performance two row aluminum radiator for small block and big block engines. Six cylinder mount positioned in front of the core support with the factory style bump in tank, so the hose goes over the core support. With the Black Ice option this radiator look and fits like the original radiator. Automatic option comes with factory style transmission cooler with factory line connections in the stock locations.



Automatic Transmission Radiator	<i>Model:</i> <b>1139013A</b>	\$559 <sup>99</sup>
---------------------------------	-------------------------------	---------------------



# 1968-72 CHEVY NOVA

This radiator is a “direct fit” for all 1968-72 Chevy Nova with automatic or manual transmissions (for BB, see Note). Also fits base model SB Chevelles. This radiator features factory type press formed end tanks, dual row core, serpentine fins, and the factory type upper and lower channels. This radiator will provide 30% more cooling than the stock copper unit and half the weight. It is also epoxy free. It will fit into the stock core support and uses the original factory hoses.



Manual Transmission Radiator	Model: <b>1139011M</b>	\$529 <sup>99</sup>
Automatic Transmission Radiator	Model: <b>1139011A</b>	\$559 <sup>99</sup>
+ 16" Spal Fan 2360CFM / Manual	Model: <b>4139011M</b>	\$809 <sup>99</sup>
+ 16" Spal Fan 2360CFM / Automatic	Model: <b>4139011A</b>	\$839 <sup>99</sup>

Note: For 68-72 BB Nova, see page 12 (models 1139022M or 1139022A ).



# 1978-87 CHEVY MONTE CARLO G-BODY

This radiator is a “direct fit” for all 1978-87 G-Body Monte Carlos with automatic or manual transmissions. This radiator features factory type press formed end tanks, dual row core, serpentine fins, and the factory type upper and lower channels. This radiator will provide 30% more cooling than the stock copper unit and half the weight. It is also epoxy free. It will fit into the stock core support and uses the original factory hoses.



Manual Transmission Radiator	Model: <b>1139005M</b>	\$529 <sup>99</sup>
Automatic Transmission Radiator	Model: <b>1139005A</b>	\$559 <sup>99</sup>

# CAMARO 1967-69 BB **LSX** MODIFIED

This radiator is a “custom package” for all 1967-69 Camaros with LSX engines with manual or automatic transmissions. Inlet and outlet are on the passenger side. This radiator features factory type press formed end tanks, dual row core, and serpentine fins. This radiator will provide 30% more cooling than the stock copper unit and half the weight. Features dual 11” spal fans with 2780 CFM. It is epoxy free and will fit into the stock core support. Radiator comes with 2 rows of 1” tubes, dual fans, billet DeWitt’s cap, temp sensor in the radiator, steam line, relays, and wiring.



Manual Transmission Radiator	Model:	<b>6139022M</b>	\$1049 <sup>99</sup>
Automatic Transmission Radiator	Model:	<b>6139022A</b>	\$1079 <sup>99</sup>
+ Black Ice Coating / Manual	Model:	<b>6239022M</b>	\$1109 <sup>99</sup>
+ Black Ice Coating / Automatic	Model:	<b>6239022A</b>	\$1139 <sup>99</sup>
+ Black Fans / Manual	Model:	<b>6339022M</b>	\$1309 <sup>99</sup>
+ Chrome Fans / Manual	Model:	<b>6339022M-C</b>	\$1739 <sup>99</sup>
+ Black Fans / Automatic	Model:	<b>6339022A</b>	\$1339 <sup>99</sup>
+ Chrome Fans / Automatic	Model:	<b>6339022A-C</b>	\$1769 <sup>99</sup>



# CAMARO 1970-81 ALL **LSX** MODIFIED

This radiator is a “custom package” for all 1970-81 Camaros with LSX engines with manual or automatic transmissions. Inlet and outlet are on the passenger side. This radiator features factory type press formed end tanks, dual row core, and serpentine fins. This radiator will provide 30% more cooling than the stock copper unit and half the weight. Features dual 11” spal fans with 2780 CFM. It is epoxy free and will fit into the stock core support. Radiator comes with 2 rows of 1” tubes, dual fans, billet DeWitt’s cap, temp sensor in the radiator, steam line, relays, and wiring.



Manual Transmission Radiator	Model:	<b>6139005M</b>	\$1049 <sup>99</sup>
Automatic Transmission Radiator	Model:	<b>6139005A</b>	\$1079 <sup>99</sup>
+ Black Ice Coating / Manual	Model:	<b>6239005M</b>	\$1109 <sup>99</sup>
+ Black Ice Coating / Automatic	Model:	<b>6239005A</b>	\$1139 <sup>99</sup>
+ Black Fans / Manual	Model:	<b>6339005M</b>	\$1309 <sup>99</sup>
+ Chrome Fans / Manual	Model:	<b>6339005M-C</b>	\$1739 <sup>99</sup>
+ Black Fans / Automatic	Model:	<b>6339005A</b>	\$1339 <sup>99</sup>
+ Chrome Fans / Automatic	Model:	<b>6339005A-C</b>	\$1769 <sup>99</sup>

# CHEVELLE 1964-67 ALL **LSX** MODIFIED

This radiator is a “custom package” for all 1964-67 Chevelles with LSX engines with manual or automatic transmissions. Inlet and outlet are on the passenger side. This radiator features factory type press formed end tanks, dual row core, and serpentine fins. This radiator will provide 30% more cooling than the stock copper unit and half the weight. Features dual 12” Flex-A-Lite fans for a low profile clearance, great for serpentine belts systems. It is epoxy free and will fit into the stock core support. Radiator comes with 2 rows of 1” tubes, dual fans, billet DeWitt’s Cap, temp sensor in the radiator, steam line, relays, and wiring.



Manual Transmission Radiator	Model:	<b>6139002M</b>	\$1049 <sup>99</sup>
Automatic Transmission Radiator	Model:	<b>6139002A</b>	\$1079 <sup>99</sup>
+ Black Ice Coating / Manual	Model:	<b>6239002M</b>	\$1109 <sup>99</sup>
+ Black Ice Coating / Automatic	Model:	<b>6239002A</b>	\$1139 <sup>99</sup>
+ Black Fans / Manual	Model:	<b>6339002M</b>	\$1309 <sup>99</sup>
+ Chrome Fans / Manual	Model:	<b>6339002M-C</b>	\$1739 <sup>99</sup>
+ Black Fans / Automatic	Model:	<b>6339002A</b>	\$1339 <sup>99</sup>
+ Chrome Fans / Automatic	Model:	<b>6339002A-C</b>	\$1769 <sup>99</sup>



# CHEVELLE 1968-72 ALL **LSX** MODIFIED

This radiator is a “custom package” for all 1968-72 Chevelles with LSX engines with manual transmission. Inlet and outlet are on the passenger side. This radiator features factory type press formed end tanks, dual row core, and serpentine fins. This radiator will provide 30% more cooling than the stock copper unit and half the weight. Features dual 11” spal fans with 2780 CFM. It is epoxy free and will fit into the stock core support. Radiator comes with 2 rows of 1” tubes, dual fans, billet DeWitt’s cap, temp sensor in the radiator, steam line, relays, and wiring.



Manual Transmission Radiator	Model:	<b>6139003M</b>	\$1049 <sup>99</sup>
Automatic Transmission Radiator	Model:	<b>6139003A</b>	\$1079 <sup>99</sup>
+ Black Ice Coating / Manual	Model:	<b>6239003M</b>	\$1109 <sup>99</sup>
+ Black Ice Coating / Automatic	Model:	<b>6239003A</b>	\$1139 <sup>99</sup>
+ Black Fans / Manual	Model:	<b>6339003M</b>	\$1309 <sup>99</sup>
+ Chrome Fans / Manual	Model:	<b>6339003M-C</b>	\$1739 <sup>99</sup>
+ Black Fans / Automatic	Model:	<b>6339003A</b>	\$1339 <sup>99</sup>
+ Chrome Fans / Automatic	Model:	<b>6339003A-C</b>	\$1769 <sup>99</sup>

# CHEVY BEL AIR / TRI-5 **LSX**

**STANDARD V6 MOUNT POSITION** This radiator is a “custom package” for all 1955-57 Chevy Tri-5 Bel Air with LSX engines with manual and automatic transmissions. Inlet and outlet are in stock position with LS sized tubing. This radiator features factory type press formed end tanks, dual row core, and serpentine fins. This radiator will provide 30% more cooling than the stock copper unit and half the weight. Features single 16” spal high performance fan. It is epoxy free and will fit into the stock core support. Radiator comes with 2 rows of 1” tubes, spal 16” fan, billet DeWitt’s cap, temp sensor in the radiator, steam line, relay, and wiring.



Manual Transmission Radiator	Model:	<b>6139013M</b>	\$1049 <sup>99</sup>
Automatic Transmission Radiator	Model:	<b>6139013A</b>	\$1079 <sup>99</sup>
+ Black Ice Coating / Manual	Model:	<b>6239013M</b>	\$1109 <sup>99</sup>
+ Black Ice Coating / Automatic	Model:	<b>6239013A</b>	\$1139 <sup>99</sup>
+ Black Fans / Manual	Model:	<b>6339013M</b>	\$1309 <sup>99</sup>
+ Chrome Fans / Manual	Model:	<b>6339013M-C</b>	\$1739 <sup>99</sup>
+ Black Fans / Automatic	Model:	<b>6339013A</b>	\$1339 <sup>99</sup>
+ Chrome Fans / Automatic	Model:	<b>6339013A-C</b>	\$1769 <sup>99</sup>

**STANDARD V8 MOUNT POSITION** This radiator is a “custom package” for all 1955-57 Chevy Tri-5 Bel Air with LSX engines with manual and automatic transmissions. Inlet and outlet are in stock position with LSX sized tubing. This radiator features factory type press formed end tanks, dual row core, and serpentine fins. This radiator will provide 30% more cooling than the stock copper unit and half the weight. Features single 16” spal high performance fan. It is epoxy free and will fit into the stock core support. Radiator comes with 2 rows of 1” tubes, spal 16” fan, billet DeWitt’s cap, temp sensor in the radiator, steam line, relay, and wiring.



Manual Transmission Radiator	Model:	<b>6139012M</b>	\$1049 <sup>99</sup>
Automatic Transmission Radiator	Model:	<b>6139012A</b>	\$1079 <sup>99</sup>
+ Black Ice Coating / Manual	Model:	<b>6239012M</b>	\$1109 <sup>99</sup>
+ Black Ice Coating / Automatic	Model:	<b>6239012A</b>	\$1139 <sup>99</sup>
+ Black Fans / Manual	Model:	<b>6339012M</b>	\$1309 <sup>99</sup>
+ Chrome Fans / Manual	Model:	<b>6339012M-C</b>	\$1739 <sup>99</sup>
+ Black Fans / Automatic	Model:	<b>6339012A</b>	\$1339 <sup>99</sup>
+ Chrome Fans / Automatic	Model:	<b>6339012A-C</b>	\$1769 <sup>99</sup>

## CHEVY C10 TRUCK 1963-66 **LSX** MODIFIED

This radiator is a “custom package” for all 1963-66 C10 Chevy Trucks with LSX engines with manual and automatic transmissions. Inlet and outlet are on the passenger side. This radiator features factory type press formed end tanks, dual row core, and serpentine fins. This radiator will provide 30% more cooling than the stock copper unit and half the weight. Features dual 11” spal fans with 2780 CFM. It is epoxy free and will fit into the stock core support. Radiator comes with 2 rows of 1” tubes, dual fans, billet DeWitt’s cap, temp sensor in the radiator, steam line, relays, and wiring.



Manual Transmission Radiator	Model:	<b>6139017M</b>	\$1049 <sup>99</sup>
Automatic Transmission Radiator (TOC)	Model:	<b>6139017A</b>	\$1079 <sup>99</sup>
+ Black Ice Coating / Manual	Model:	<b>6239017M</b>	\$1109 <sup>99</sup>
+ Black Ice Coating / Automatic	Model:	<b>6239017A</b>	\$1139 <sup>99</sup>
+ Black Fans / Manual	Model:	<b>6339017M</b>	\$1309 <sup>99</sup>
+ Chrome Fans / Manual	Model:	<b>6339017M-C</b>	\$1739 <sup>99</sup>
+ Black Fans / Automatic	Model:	<b>6339017A</b>	\$1339 <sup>99</sup>
+ Chrome Fans / Automatic	Model:	<b>6339017A-C</b>	\$1769 <sup>99</sup>

## CHEVY C10 TRUCK/BLAZER 1967-87 **LSX** MODIFIED

This radiator is a “custom package” for all 1967-87 C10 Trucks/Blazer with LSX engines with manual transmission. Inlet and outlet are on the passenger side. This radiator features factory type press formed end tanks, dual row core, and serpentine fins. This radiator will provide 30% more cooling than the stock copper unit and half the weight. Features dual 11” spal fans with 2780 CFM. It is epoxy free and will fit into the stock core support. Radiator comes with 2 rows of 1” tubes, dual fans, billet DeWitt’s cap, temp sensor in the radiator, steam line, relays, and wiring.



Manual Transmission Radiator	Model:	<b>6139018M</b>	\$1049 <sup>99</sup>
Automatic Transmission Radiator (TOC)	Model:	<b>6139018A</b>	\$1079 <sup>99</sup>
+ Black Ice Coating / Manual	Model:	<b>6239018M</b>	\$1109 <sup>99</sup>
+ Black Ice Coating / Automatic	Model:	<b>6239018A</b>	\$1139 <sup>99</sup>
+ Black Fans / Manual	Model:	<b>6339018M</b>	\$1309 <sup>99</sup>
+ Chrome Fans / Manual	Model:	<b>6339018M-C</b>	\$1739 <sup>99</sup>
+ Black Fans / Automatic	Model:	<b>6339018A</b>	\$1339 <sup>99</sup>
+ Chrome Fans / Automatic	Model:	<b>6339018A-C</b>	\$1769 <sup>99</sup>

## CHEVY NOVA / CHEVY II 1962-67 **LSX** MOD.

This radiator is a “custom package” for all 1962-67 Chevy II, Nova, with LSX engines with manual or automatic transmissions. Inlet and outlet are on the passenger side. This radiator features factory type press formed end tanks, dual row core, and serpentine fins. This radiator will provide 30% more cooling than the stock copper unit and half the weight. Features dual 11” spal fans with 2780 CFM. It is epoxy free and will fit into the stock core support. Radiator comes with 2 rows of 1” tubes, dual fans, billet DeWitt’s cap, temp sensor in the radiator, steam line, relays, and wiring.



Manual Transmission Radiator	Model:	<b>6139010M</b>	\$1049 <sup>99</sup>
Automatic Transmission Radiator	Model:	<b>6139010A</b>	\$1079 <sup>99</sup>
+ Black Ice Coating / Manual	Model:	<b>6239010M</b>	\$1109 <sup>99</sup>
+ Black Ice Coating / Automatic	Model:	<b>6239010A</b>	\$1139 <sup>99</sup>
+ Black Fans / Manual	Model:	<b>6339010M</b>	\$1309 <sup>99</sup>
+ Chrome Fans / Manual	Model:	<b>6339010M-C</b>	\$1739 <sup>99</sup>
+ Black Fans / Automatic	Model:	<b>6339010A</b>	\$1339 <sup>99</sup>
+ Chrome Fans / Automatic	Model:	<b>6339010A-C</b>	\$1769 <sup>99</sup>

## CORVETTE 1955-60 **LSX** MODIFIED

This radiator is a “custom package” for all 1955-60 Corvettes with LSX engines with manual or automatic transmissions. Inlet and outlet are on the passenger side, filler neck moved to the driver side. This radiator features factory type press formed end tanks, dual row core, and serpentine fins. This radiator will provide 40% more cooling over the stock copper radiator. Features single 16” spal high performance fan. It is epoxy free and will fit into the stock core support. Radiator comes with 2 rows of 1” tubes, spal fan, billet DeWitt’s cap, temp sensor in the radiator, steam line, relay, and wiring.



Manual Transmission Radiator	Model:	<b>6139055M</b>	\$889 <sup>99</sup>
Automatic Transmission Radiator	Model:	<b>6139055A</b>	\$919 <sup>99</sup>
+ Black Ice Coating / Manual	Model:	<b>6239055M</b>	\$949 <sup>99</sup>
+ Black Ice Coating / Automatic	Model:	<b>6239055A</b>	\$979 <sup>99</sup>
+ Black Fans / Manual	Model:	<b>6339055M</b>	\$1149 <sup>99</sup>
+ Chrome Fans / Manual	Model:	<b>6339055M-C</b>	\$1579 <sup>99</sup>
+ Black Fans / Automatic	Model:	<b>6339055A</b>	\$1179 <sup>99</sup>
+ Chrome Fans / Automatic	Model:	<b>6339055A-C</b>	\$1609 <sup>99</sup>

# CORVETTE 1961-62 LSX MODIFIED

This radiator is a “custom package” for all 1961-62 Corvettes with LSX engines with manual or automatic transmissions. Inlet and outlet are on the passenger side, filler neck, stem line, and temperature switch on passenger side. This radiator features formed end tanks, dual row core, and serpentine fins. This radiator will provide 40% more cooling over the stock copper radiator. Features single 16” spal high performance fan. It is epoxy free and will fit into the stock core support. Radiator comes with 2 rows of 1” tubes, spal fan, billet DeWitt’s cap, temp sensor in the radiator, steam line, relay, and wiring. This model has a filler neck on the radiator, which eliminates the stock Harrison overflow tank.



Manual Transmission Radiator	Model:	<b>6139061M</b>	\$889 <sup>99</sup>
Automatic Transmission Radiator	Model:	<b>6139061A</b>	\$919 <sup>99</sup>
+ Black Ice Coating / Manual	Model:	<b>6239061M</b>	\$949 <sup>99</sup>
+ Black Ice Coating / Automatic	Model:	<b>6239061A</b>	\$979 <sup>99</sup>
+ Black Fans / Manual	Model:	<b>6339061M</b>	\$1149 <sup>99</sup>
+ Chrome Fans / Manual	Model:	<b>6339061M-C</b>	\$1579 <sup>99</sup>
+ Black Fans / Automatic	Model:	<b>6339061A</b>	\$1179 <sup>99</sup>
+ Chrome Fans / Automatic	Model:	<b>6339061A-C</b>	\$1609 <sup>99</sup>

# CORVETTE 1963-65 LSX MODIFIED

This radiator is custom made to simplify a LSX series engine conversion on 1963-65 Corvettes. First, we moved the inlet and outlet to the passenger side. These connections are resized to match the ports on the LSX engine. Second, we added a filler neck for a direct mounted radiator cap, which eliminates the need for a separate surge tank. We even add a connection for the steam line. This radiator is designed to fit the original small block (pin mount) core support and it will eliminate the stock upper mounting bracket. This larger package will fill 100% of the core support opening with functioning core area while the end tanks are on each side behind the support. Pre-mounted to the radiator are spal dual 11” electric fans, providing 2780 CFM air flow. This will eliminate the factory fan and fan shroud. The fans will be controlled via a 195on/175off temperature switch, which we mount inside the end tank. Wiring harnesses, relays and wiring instructions are also included.



*(Note: The horn relay and voltage regulator must be relocated on 1963 models.)*

Manual Transmission Radiator	Model:	<b>6139024M</b>	\$1049 <sup>99</sup>
Automatic Transmission Radiator	Model:	<b>6139024A</b>	\$1079 <sup>99</sup>
+ Black Ice Coating / Manual	Model:	<b>6239024M</b>	\$1109 <sup>99</sup>
+ Black Ice Coating / Automatic	Model:	<b>6239024A</b>	\$1139 <sup>99</sup>
+ Black Fans / Manual	Model:	<b>6339024M</b>	\$1309 <sup>99</sup>
+ Chrome Fans / Manual	Model:	<b>6339024M-C</b>	\$1739 <sup>99</sup>
+ Black Fans / Automatic	Model:	<b>6339024A</b>	\$1339 <sup>99</sup>
+ Chrome Fans / Automatic	Model:	<b>6339024A-C</b>	\$1769 <sup>99</sup>



## CORVETTE 1963-72 **LSX** MODIFIED

This radiator is a “custom package” for all 1963-72 Corvettes with LSX engines with manual and automatic transmissions. This radiator is made to fit the original SB core support. The radiator features pin mounts on the bottom and a loop on the top middle of radiator. Inlet and outlet are on the passenger side, filler neck, stem line, and temperature switch on passenger side. This radiator features formed end tanks, dual row core, and serpentine fins. This radiator will provide 40% more cooling over the stock copper radiator. Features single 16” spal high performance fan. It is epoxy free and will fit into the stock core support. Radiator comes with 2 rows of 1” tubes, spal fan, billet DeWitt’s cap, temp sensor in the radiator, steam line, relay, and wiring. This model has a filler neck on the radiator, which eliminates the stock Harrison overflow tank.



Manual Transmission Radiator	Model:	<b>6139063M</b>	\$889 <sup>99</sup>
Automatic Transmission Radiator	Model:	<b>6139063A</b>	\$919 <sup>99</sup>
+ Black Ice Coating / Manual	Model:	<b>6239063M</b>	\$949 <sup>99</sup>
+ Black Ice Coating / Automatic	Model:	<b>6239063A</b>	\$979 <sup>99</sup>
+ Black Fans / Manual	Model:	<b>6339063M</b>	\$1149 <sup>99</sup>
+ Chrome Fans / Manual	Model:	<b>6339063M-C</b>	\$1579 <sup>99</sup>
+ Black Fans / Automatic	Model:	<b>6339063A</b>	\$1179 <sup>99</sup>
+ Chrome Fans / Automatic	Model:	<b>6339063A-C</b>	\$1609 <sup>99</sup>

Visit our website for additional information and tech tips.

[www.dewitts.com](http://www.dewitts.com)



# CORVETTE 1966-67 SB **LSX** MODIFIED

This radiator is a “custom package” for all 1966-67 Corvettes with manual transmission and LSX engines. Inlet and outlet are on the passenger side. This radiator is designed to fit the original small block core support. This radiator features press formed end tanks, dual row core, and serpentine fins. Features dual 11” spal fans with 2780 CFM, your best choice for cars with A/C. We put a filler neck on the top of the radiator, passenger side, that eliminates the need for the factory Harrison overflow tank. Radiator comes with 2 rows of 1” tubes, spal fan, billet DeWitt’s cap, temp sensor in the radiator, steam line, relay, and wiring.



Manual Transmission Radiator	Model:	<b>6139025M</b>	\$1049 <sup>99</sup>
Automatic Transmission Radiator	Model:	<b>6139025A</b>	\$1079 <sup>99</sup>
+ Black Ice Coating / Manual	Model:	<b>6239025M</b>	\$1109 <sup>99</sup>
+ Black Ice Coating / Automatic	Model:	<b>6239025A</b>	\$1139 <sup>99</sup>
+ Black Fans / Manual	Model:	<b>6339025M</b>	\$1309 <sup>99</sup>
+ Chrome Fans / Manual	Model:	<b>6339025M-C</b>	\$1739 <sup>99</sup>
+ Black Fans / Automatic	Model:	<b>6339025A</b>	\$1339 <sup>99</sup>
+ Chrome Fans / Automatic	Model:	<b>6339025A-C</b>	\$1769 <sup>99</sup>

# CORVETTE 1966-68 BB **LSX** MODIFIED

This radiator is a “custom package” for all 1966-68 BB Corvettes with manual transmission and LSX Motors. Inlet and outlet are on the passenger side. This radiator features factory type press formed end tanks, dual row core, and serpentine fins. This radiator will provide 30% more cooling than the stock copper unit and half the weight. Features dual 11” spal fans with 2780 CFM. It is epoxy free and will fit into the stock core support. Radiator comes with 2 rows of 1” tubes, spal fan, billet DeWitt’s cap, temp sensor in the radiator, steam line, relay, and wiring.



Manual Transmission Radiator	Model:	<b>6139066M</b>	\$1049 <sup>99</sup>
Automatic Transmission Radiator	Model:	<b>6139066A</b>	\$1079 <sup>99</sup>
+ Black Ice Coating / Manual	Model:	<b>6239066M</b>	\$1109 <sup>99</sup>
+ Black Ice Coating / Automatic	Model:	<b>6239066A</b>	\$1139 <sup>99</sup>
+ Black Fans / Manual	Model:	<b>6339066M</b>	\$1309 <sup>99</sup>
+ Chrome Fans / Manual	Model:	<b>6339066M-C</b>	\$1739 <sup>99</sup>
+ Black Fans / Automatic	Model:	<b>6339066A</b>	\$1339 <sup>99</sup>
+ Chrome Fans / Automatic	Model:	<b>6339066A-C</b>	\$1769 <sup>99</sup>

# CORVETTE 1969-72 **LSX** MODIFIED

This is a custom LSX engine conversion radiator for all 1969-72 Corvettes with 26” core support and manual transmission. Inlet and outlet are on the passenger side and sized to match the LSX engine. This radiator features factory type press formed end tanks, dual row core, and serpentine fins. This radiator will provide 30% more cooling than the stock copper unit and half the weight. It is also epoxy free.



Manual Transmission Radiator	Model:	<b>6139070M</b>	\$1049 <sup>99</sup>
------------------------------	--------	-----------------	----------------------

# CORVETTE 1969-1972 SB **LSX** MODIFIED

*Note: Model: 6139026M (Natural/Man) is for 1969-72 small block base motor, no air, no auto. Used with the pin mount radiator core support and Harrison overflow tank. If your car has air, auto, and higher HP use model 6139070M.*

This radiator is a "custom package" for all 1969-72 Corvettes with manual transmission and LS Motors. Inlet and outlet are on the passenger side. This radiator is designed to fit the original small block core support. It has the pin mounts on the bottom and two small tabs on the front side that eliminates the need for the bracket on the top of the radiator. This radiator features press formed end tanks, dual row core, and serpentine fins. It features Dual 11" Spal fans with 2780 CFM, the best choice for cars with AC. We put a filler neck on the top of the radiator, passenger side, which eliminates the need for the factory Harrison overflow tank. Radiator comes with 2 rows of 1" tubes, Dual fans, Billet DeWitts Cap, Temp sensor in the radiator, stem line, relays, and wiring.



Manual Transmission Radiator	Model:	<b>6139026M</b>	\$1049 <sup>99</sup>
Automatic Transmission Radiator	Model:	<b>6139026A</b>	\$1079 <sup>99</sup>
+ Black Ice Coating / Manual	Model:	<b>6239026M</b>	\$1109 <sup>99</sup>
+ Black Ice Coating / Automatic	Model:	<b>6239026A</b>	\$1139 <sup>99</sup>
+ Black Fans / Manual	Model:	<b>6339026M</b>	\$1309 <sup>99</sup>
+ Chrome Fans / Manual	Model:	<b>6339026M-C</b>	\$1739 <sup>99</sup>
+ Black Fans / Automatic	Model:	<b>6339026A</b>	\$1339 <sup>99</sup>
+ Chrome Fans / Automatic	Model:	<b>6339026A-C</b>	\$1769 <sup>99</sup>

# CORVETTE 1969-72 BB / 1973-76 ALL **LSX** MODIFIED

This radiator is a "custom package" for all 1969-72 BB Corvette and all 1973-76 Corvettes with manual or automatic transmissions. Inlet and outlet are on the passenger side. This radiator features factory type press formed end tanks, dual row core, and serpentine fins. This radiator will provide 30% more cooling than the stock copper unit and half the weight. Features dual 11" spal fans with 2780 CFM. It is epoxy free and will fit into the stock core support. Radiator comes with 2 rows of 1" tubes, spal fan, billet DeWitt's cap, temp sensor in the radiator, steam line, relay, and wiring.



Manual Transmission Radiator	Model:	<b>6139073M</b>	\$1049 <sup>99</sup>
Automatic Transmission Radiator	Model:	<b>6139073A</b>	\$1079 <sup>99</sup>
+ Black Ice Coating / Manual	Model:	<b>6239073M</b>	\$1109 <sup>99</sup>
+ Black Ice Coating / Automatic	Model:	<b>6239073A</b>	\$1139 <sup>99</sup>
+ Black Fans / Manual	Model:	<b>6339073M</b>	\$1309 <sup>99</sup>
+ Chrome Fans / Manual	Model:	<b>6339073M-C</b>	\$1739 <sup>99</sup>
+ Black Fans / Automatic	Model:	<b>6339073A</b>	\$1339 <sup>99</sup>
+ Chrome Fans / Automatic	Model:	<b>6339073A-C</b>	\$1769 <sup>99</sup>

# CORVETTE 1977-82 **LSX** MODIFIED

This radiator is a “custom package” for all 1977-82 Corvette LSX models with manual or automatic transmissions. Inlet and outlet are on the passenger side. This radiator features factory type press formed end tanks, dual row core, and serpentine fins. This radiator will provide 30% more cooling than the stock copper unit and half the weight. Features dual 11” spal fans with 2780 CFM. It is epoxy free and will fit into the stock core support. Radiator comes with 2 rows of 1” tubes, spal fan, billet DeWitt’s cap, temp sensor in the radiator, steam line, relay, and wiring.



Manual Transmission Radiator	Model:	<b>6139077M</b>	\$1049 <sup>99</sup>
Automatic Transmission Radiator	Model:	<b>6139077A</b>	\$1079 <sup>99</sup>
+ Black Ice Coating / Manual	Model:	<b>6239077M</b>	\$1109 <sup>99</sup>
+ Black Ice Coating / Automatic	Model:	<b>6239077A</b>	\$1139 <sup>99</sup>
+ Black Fans / Manual	Model:	<b>6339077M</b>	\$1309 <sup>99</sup>
+ Chrome Fans / Manual	Model:	<b>6339077M-C</b>	\$1739 <sup>99</sup>
+ Black Fans / Automatic	Model:	<b>6339077A</b>	\$1339 <sup>99</sup>
+ Chrome Fans / Automatic	Model:	<b>6339077A-C</b>	\$1769 <sup>99</sup>



# IMPALA 1959-62 **LSX** MODIFIED

This is a custom LSX series radiator for all 1959-62 Impalas with manual transmission. Inlet and outlet are on the passenger side. This radiator features factory type press formed end tanks, dual row core, and serpentine fins. This radiator will provide 30% more cooling than the stock copper unit and half the weight. It is also epoxy free and will fit into the stock core support and uses the original factory hoses.

Manual Transmission Radiator	Model:	<b>6139015M</b>	\$1049 <sup>99</sup>
------------------------------	--------	-----------------	----------------------

# MUSTANG 1964-66

This radiator features two rows of 1" tubes and serpentine fin at 15 fins per inch. Connections are at the top right and bottom right. Available for manual or automatic transmissions.



Double Row Radiator / Manual

Model: **1138003M** \$529<sup>99</sup>

Double Row Radiator / Automatic

Model: **1138003A** \$559<sup>99</sup>

+ 16" Spal Fan 1700CFM / Double Row Radiator / Manual

Model: **4138003M** \$809<sup>99</sup>



# MUSTANG 1967 (289)

This radiator features two rows of 1" tubes and serpentine fin at 15 fins per inch. Connections are at the top right and bottom right. Used on Mach 1 and also fits 1967-70 with 390/427/428 and 1970 302/351 Mustang and Cougar with HD cooling. Available for manual or automatic transmissions.



Double Row Radiator / Manual

Model: **1138004M** \$529<sup>99</sup>

Double Row Radiator / Automatic

Model: **1138004A** \$559<sup>99</sup>

# MUSTANG 1968-70

This radiator features press formed tanks similar to the original brass/copper unit. It has two rows of 1" tubes and serpentine fin at 15 fins per inch. The hose connection locations vary per application. Check your vehicle's configuration first and then choose the correction application from the list below.



Manual Transmission Radiator	<i>Top Left/Bottom Right</i>	Model: <b>1138005M</b>	\$529 <sup>99</sup>
Automatic Transmission Radiator	<i>Top Left/Bottom Right</i>	Model: <b>1138005A</b>	\$559 <sup>99</sup>
+ Black Ice Coating / Manual	<i>Top Left/Bottom Right</i>	Model: <b>1238005M</b>	\$589 <sup>99</sup>
+ Black Ice Coating / Automatic	<i>Top Left/Bottom Right</i>	Model: <b>1238005A</b>	\$619 <sup>99</sup>
Manual Transmission Radiator	<i>Top Right/Bottom Left</i>	Model: <b>1138006M</b>	\$529 <sup>99</sup>
Automatic Transmission Radiator	<i>Top Right/Bottom Left</i>	Model: <b>1138006A</b>	\$559 <sup>99</sup>
+ Black Ice Coating / Manual	<i>Top Right/Bottom Left</i>	Model: <b>1238006M</b>	\$589 <sup>99</sup>
+ Black Ice Coating / Automatic	<i>Top Right/Bottom Left</i>	Model: <b>1238006A</b>	\$619 <sup>99</sup>
Manual Transmission Radiator	<i>Top Right/Bottom Right (Shown)</i>	Model: <b>1138007M</b>	\$529 <sup>99</sup>
Automatic Transmission Radiator	<i>Top Right/Bottom Right</i>	Model: <b>1138007A</b>	\$559 <sup>99</sup>
+ Black Ice Coating / Manual	<i>Top Right/Bottom Right</i>	Model: <b>1238007M</b>	\$589 <sup>99</sup>
+ Black Ice Coating / Automatic	<i>Top Right/Bottom Right</i>	Model: <b>1238007A</b>	\$619 <sup>99</sup>



## 1971-73 MUSTANG

This radiator features two rows of 1" tubes and serpentine fin at 15 fins per inch. Connections are at the top right and bottom left. For manual or automatic transmissions.



Double Row Radiator / Manual

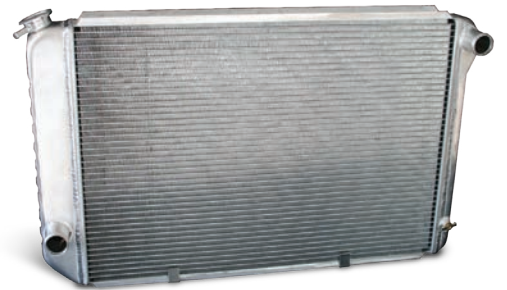
Model: **1138009M** \$529<sup>99</sup>

Double Row Radiator / Automatic

Model: **1138009A** \$559<sup>99</sup>

## 1979-93 MANUAL MUSTANG

This radiator features two rows of 1" tubes and serpentine fin at 15 fins per inch. Available for manual transmissions.



Manual Transmission Radiator

Model: **1138012M** \$529<sup>99</sup>

## 1994-96 MUSTANG

This radiator features two rows of 1" tubes and serpentine fin at 15 fins per inch. Connections are at the top right and bottom left. For manual or automatic transmissions.



Double Row Radiator / Manual

Model: **1138013M** \$529<sup>99</sup>

Double Row Radiator / Automatic

Model: **1138013A** \$559<sup>99</sup>

# 1997-2004 MUSTANG

This radiator features two rows of 1" tubes and serpentine fin at 15 fins per inch. Connections are top right and bottom left. Available for manual or automatic transmissions.

Double Row Radiator / Manual

Model: **1138014M** \$529<sup>99</sup>

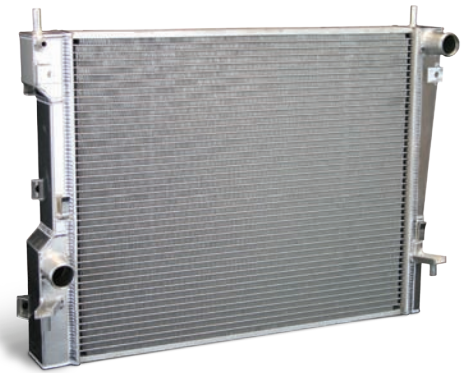
Double Row Radiator / Automatic

Model: **1138014A** \$559<sup>99</sup>



# 2005-14 MUSTANG GT

This radiator features two rows of 32mm tubes and serpentine fin at 15 fins per inch. Fits manual '05- '13 V6 & GT, '07- '09 Shelby GT.



Manual Transmission Radiator

Model: **1138015M** \$719<sup>99</sup>

# 2015-16 MUSTANG GT

This radiator features two rows of 32mm tubes and serpentine fin at 15 fins per inch. Fits manual '05- '13 V6 and GT, '07- '09 Shelby GT.

Manual Transmission Radiator

Model: **1148035** \$719<sup>99</sup>



## RADIATOR CAP

**BRUSH ALUMINUM · 15 PSI**

DeWitts Logo engraved radiator cap. Custom grip notches for easy removal.

Model: **514A** \$49<sup>99</sup>

DeWitts Logo engraved radiator cap.

Model: **512** \$39<sup>99</sup>



## RADIATOR CAP

**BLACK ALUMINUM · 15 PSI**

DeWitts Logo engraved radiator cap. Custom grip notches for easy removal.

Model: **514B** \$59<sup>99</sup>

DeWitts Logo engraved radiator cap.

Model: **512B** \$49<sup>99</sup>

## SURGE TANK

**DATED / NON DATED CORVETTE SURGE TANKS**

1961-1962 Corvette Surge Tank - Date Coded	Model: <b>400</b>	\$179 <sup>99</sup>
1961-1962 Corvette Surge Tank - Non Dated	Model: <b>420</b>	\$159 <sup>99</sup>
1963-1964 Corvette Surge Tank - Date Coded	Model: <b>401</b>	\$179 <sup>99</sup>
1963-1967 Corvette Surge Tank - Non Dated	Model: <b>421</b>	\$159 <sup>99</sup>
1965-1967 Corvette Surge Tank - Date Coded	Model: <b>402</b>	\$179 <sup>99</sup>
1968-1972 Corvette Surge Tank - Date Coded	Model: <b>403</b>	\$179 <sup>99</sup>
1968-1972 Corvette Surge Tank - Non Dated	Model: <b>422</b>	\$159 <sup>99</sup>



## BLACK ICE

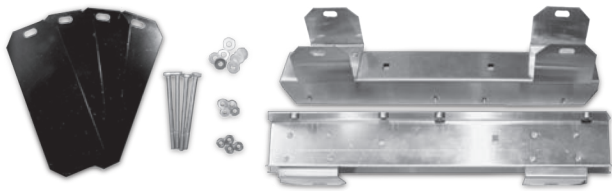
**RADIATOR COATING**

Black Ice is a unique product specifically designed for coating aluminum radiators. This two-part epoxy paint will adhere to raw aluminum and will never flake or peel. This kit includes two half pint cans. When combined it creates enough paint to coat two large radiators. The product is applied using an air type spray gun and only one or two coats is necessary. The activated product will cure to the touch in about twelve hours at room temperature. As the formula cures, the solvents evaporate and the product shrinks, to form a skin as little as .002" thin. This thin skin will protect the aluminum surface without any effect on heat transfer.



Black Ice Coating \$34<sup>99</sup>





## 1960-61 TANK BRACKETS

BRUSH ALUMINUM · 15 PSI

Side brackets for our 940 top tank aluminum radiator. This kit includes two mounting brackets, four die cut rubber cushions, and mounting hardware.

Model: **440** \$169<sup>99</sup>



## ENGINE OIL LINES W/ BYPASS

C5 / C6 CORVETTE ENGINE OIL LINES

This is a modified GM hose assembly for use with driver side (left) EOC applications. The adapter block includes a port for the oil pressure switch.

C5 CORVETTE Model: **898** \$239<sup>99</sup>

C6 CORVETTE Model: **899** \$239<sup>99</sup>



## ENGINE OIL ADAPTER

LS SERIES PACKAGE

This package includes the LPE oil adapter, GM oil seal, metric bolts, and 1/8 inch npt plug. Bolts directly to any LS series engine and provides two large #10AN connections. This adapter has a port for the factory temperature sender and an auxiliary port for other needs.

LS SERIES ADAPTER Model: **892** \$129<sup>99</sup>



## MOUNTING STRAP

LS SERIES ENGINE OIL HOSE KIT

A new reproduction metal radiator mounting strap.

1955-1957 Model: **959** \$189<sup>99</sup>

1958-1960 Model: **960** \$189<sup>99</sup>



## HOSE KIT

LS SERIES ENGINE OIL HOSE KIT

This kit includes the Lingenfelter oil adapter, GM oil seal, metric bolts, and 1/8 inch npt plug. Bolts directly to any LS series engine and provides two large #10AN connections. This adapter has a port for the factory temperature sender and an auxiliary port for other needs. Kit also includes (4) four steel AN fittings, and two aeroquip stainless steel hose assemblies for left side mounted EOC.

C5 CORVETTE Model: **894C** \$369<sup>99</sup>



## BB CORVETTE SURGE TANK

1969-72 BRASS

New reproduction brass/copper radiator expansion tank for 1969-72 big block engines with AC option only. Date tag and cap are sold separately. Shown in black for display only, tank is supply in raw copper.

SURGE TANK Model: **419** \$269<sup>99</sup>

## SP004 1963-72 SB CORVETTE FAN KIT

This package is for one (1) 16" high performance "pull" fan and bracket kit. It includes a relay harness and 195 temperature switch. The fan provides 2360 CFM at 21.6 amps. These brackets are designed to fit the "pin mount" type radiator used on 1963-72 small block Corvettes only. The fan kit replaces the stock engine driven fan and shroud. Note: A shroud can be use to hide the electric fan however slight trimming of the shroud will be necessary.

---

Model: **SP004** \$249<sup>99</sup>

## SP006 SPAL GM MOUNT

This package is for one (1) 16" high performance "pull" fan, bracket kit, and hardware. The kit also includes one relay harness and 195 temperature switch. Fan provides 2360 CFM at 21.6 amps. Brackets are designed to fit all factory GM Copper/brass radiators, Griffin aluminum radiators, and DeWitts "direct fit" aluminum radiators.

*Note: This fan kit is designed to "supplement" the stock fan and shroud. It does not provide enough surface area to eliminate the shroud and/or engine driven fan when the core is larger than 23" wide*

---

Model: **SP006** \$249<sup>99</sup>

## SP015 C5 CORVETTE FAN UPGRADE

We completely re-designed our C5 fan package to utilize a lazer cut aluminum shroud. The shroud incorporates (4) four rubber flapper valves to improve air flow at high speeds and close at slower speeds. Two spal 12" high performance fan provide 3200 CFM, which doubles the factory output. DeWitts customized the fans with matching Corvette fan plugs, so no cutting or splicing is required.

---

Model: **SP015** \$419<sup>99</sup>

## SP460 DUAL SPAL FAN KIT

DeWitts has created a complete kit to add a dual fan to your GM vehicle. This package includes the spal dual fans, two complete relay harnesses, one control switch, and two custom mounting brackets with mounting hardware.

---

Model: **SP460** \$449<sup>99</sup>

## SP463 C6 FAN UPGRADE

Spals dual fan package boosts air flow up 40% from stock. This fan package only fits our "direct fit" radiators. Note: Factory wiring will need to be cut and spliced in order for the factory ECM to operate the fans.

---

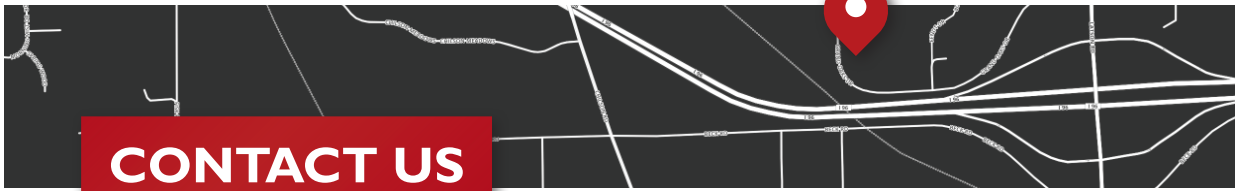
Model: **SP463** \$419<sup>99</sup>

## SP464 1984-89 CORVETTE FAN UPGRADE

Now you can upgrade the factory 1700 CFM with this high performance (2360 CFM) fan. Fan comes with "direct fit" adapter plate, ready to bolt on and no cutting or splicing of wires is needed. We supply this fan with a harness matching plug!

---

Model: **SP464** \$209<sup>99</sup>



**CONTACT US**

 **517-548-0600**

[www.DEWITTS.COM](http://www.DEWITTS.COM)

**DeWitts Radiator, LLC**  
1275 Grand Oaks Drive  
Howell, Michigan 48843

## LIFETIME WARRANTY

DeWitts Radiator, LLC. (DRL) warrants all aluminum radiators to be free from defects in materials and workmanship for as long as you own the vehicle in which it was originally installed. This warranty is extended only to the first purchaser of any such radiator at retail. Proof of purchase must be provided in the way of a sale receipt from DRL or an authorized dealer. If the radiator is used in any racing application this warranty is considered null and void.

***This warranty does not cover labor, materials not manufactured by DRL, or shipping charges. Radiators repaired or altered by parties outside DRL are not covered by this warranty. The retail purchaser is responsible for the appropriate use and application of the product. This warranty does not cover the effects of physical or chemical properties of water, steam, or other liquids used in the radiator. Radiators used without an adequate proportion of premium quality antifreeze coolant and distilled water are not covered by this warranty. DRL radiators require a correct proportion of quality coolant, which contains aluminum corrosion inhibitors in the formula and distilled water. All Corvette cooling systems must include a radiator pressure cap with the proper pressure rating.***

Claims for internal damage of the engine, components, cosmetics, or user's vehicle are not covered by this warranty. It is the responsibility of the product user to monitor engine operation and have proper detection devices installed to warn the user of overheating. Specific exemptions to this warranty include tube damage, tubes ballooning or bursting from excessive engine operating temperature or pressure, internal corrosion due to inadequate proportions of antifreeze/coolant, or damage to the radiator resulting from collision or service. DRL shall not be responsible for damages to its product or injury to persons using the product when improperly opening radiator pressure caps, burst hoses, etc. DRL shall not be responsible for injury or harm to persons or property caused by persons or vehicles using our products.

The purchaser's remedy for breach of this warranty, exclusive of all other remedies provided by law, is expressly limited to repair or replacement of the part purchased. All products returned for warranty consideration must be returned to DRL with all transportation expenses prepaid. Upon receipt of the product, DRL will examine the product to determine the condition and validity of the claim. DRL reserves the right to repair or replace the product at our discretion. Expanded or ballooned tubes are the result of an over pressure condition and this is not covered under warranty.

Radiators which were damaged in shipping should immediately be reported to the shipping carrier as damaged, and claims of damage filed accordingly. Contact the transport carrier (UPS, truck line, etc.) for procedures in filing a damage claim with the carrier or their agent. Do not return a product damaged in shipping to Dewitts Radiator, LLC. ***Distilled water and premium antifreeze must be used with all aluminum radiators!***



**DeWitts Radiator, LLC**  
*1275 Grand Oaks Drive*  
*Howell, Michigan 48843*

 **517-548-0600**



[www.dewitts.com](http://www.dewitts.com)