



FAN RELAY INSTALLATION INSTRUCTION SHEET

32-SPFRH

Secure the relay in the engine compartment away from all heat sources. Then connect the wires using the diagrams.

Red: Connect to the red wire of fan pigtail with pre-terminated yellow crimp.

Grey: Connect to thermostat socket (sending unit) with blue ring crimp connector.

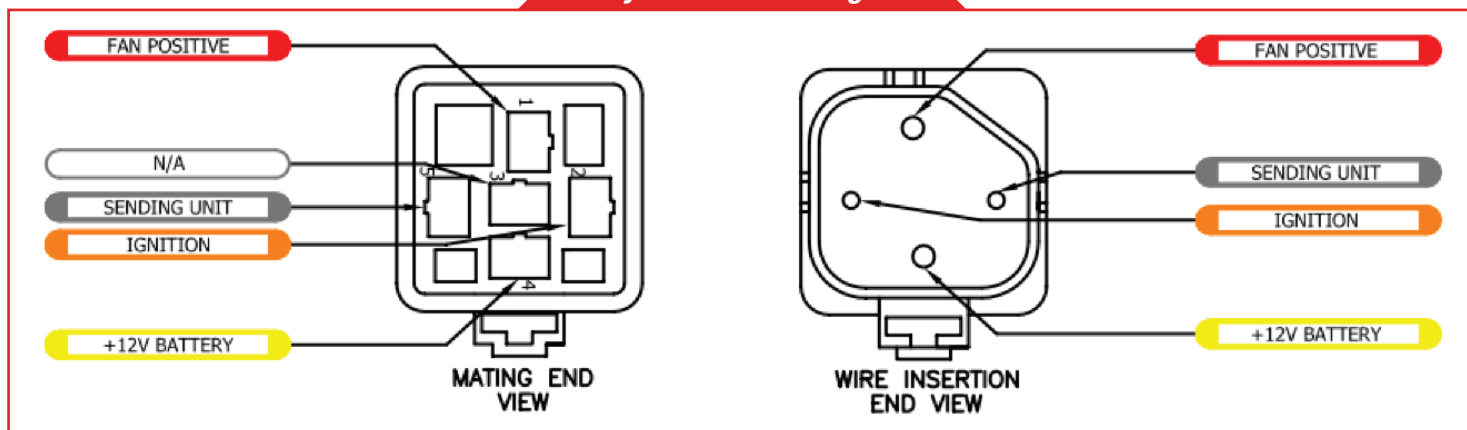
Yellow: Connect to positive battery terminal using the fuse holder and yellow crimp connectors.

Orange: Connect to +12V DC ignition source when key is in run position.

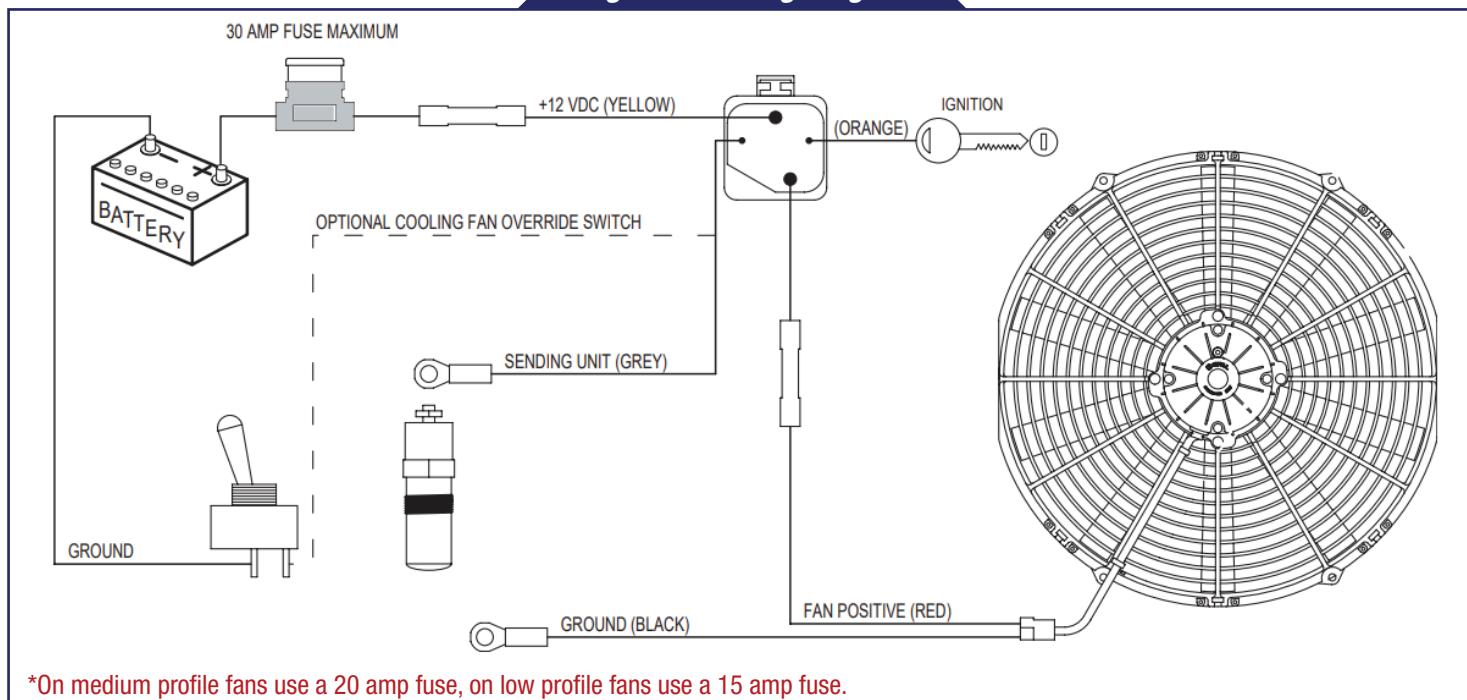
Black: Connect ring terminal to chassis ground.

Fuse Holder: Connect fuse holder in-line per diagram within 12" of the battery.

Relay Connection Diagram



Single Fan Wiring Diagram



*On medium profile fans use a 20 amp fuse, on low profile fans use a 15 amp fuse.

