



Bourg-Joly
Malicorne
depuis 1747

May 2024

Index



- [Page 3 : An Ancestral French Treasure](#)
- [Page 4 : Founded in 1747 - 275 years of history](#)
- [Page 5 : Bourg-Joly Malicorne Today](#)
- [Page 6 : Recognition for our ancestral Savoir Faire & Industrial Know-How](#)
- [Page 8 : 18th Century Masters Skills and Savoir Faire](#)
- [Page 9 : The Making Process : Step by Step](#)
- [Page 14 : Made to Order and Bespoke service](#)
- [Page 19 : Our materials & Care instructions](#)
- [Page 20 : Plates & Bowls Collection](#)
- [Page 55 : Leaves](#)
- [Page 62 : Serving Dishes](#)
- [Page 74 : Trays](#)
- [Page 77 : Small Plates, Trinket & Soap dishes](#)
- [Page 79 : Tea & Coffee](#)
- [Page 85 : The Monaco Basket Collection](#)
- [Page 90 : Gilt Baskets](#)
- [Page 96 : Bourg-Joly Basket Collection](#)
- [Page 110 : Restauration Basket Collection](#)
- [Page 117 : Vezanne Basket Collection](#)
- [Page 141 : Shamaya Basket Collection](#)
- [Page 148 : Cake Stands](#)
- [Page 154 : Cache Pots and Vases](#)
- [Page 165 : Fruits](#)
- [Page 172 : Candle sticks](#)
- [Page 175 : Our Glaze Colours](#)
- [Page 186 : Hand Painted Colours](#)
- [Page 188 : Hand Painted Motifs](#)
- [Page 235 : Decorative Eggs](#)
- [Page 238 : Animals Collection](#)
- [Page 250 : Treasures of Bourg-Joly Malicorne](#)
- [Page 261 : Fruit baskets](#)
- [Page 265 : Contact Information](#)



An Ancestral French Treasure

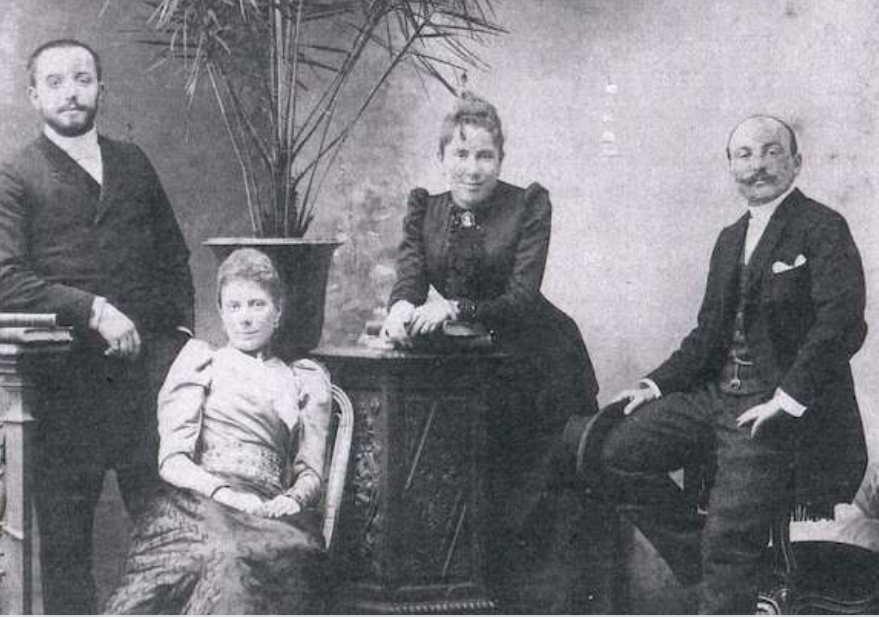
Bourg-Joly Malicorne, faïencerie d'art du Bourg-Joly, was founded in 1747, in the heart of the Sarthe River valley by Jean Loiseau. It is the oldest earthenware company still in operation in Malicorne-sur-Sarthe.

Faïence, or tin-glazed and enamelled earthenware, first emerged in France during the 16th Century. Originally replicating designs that had traditionally been produced in wood or metal for everyday use, over the next two centuries, the styles and designs evolved towards finely crafted forms, elegant proportions and artistic hand painted patterns.

White clay was used to produce the finest results for the most sought-after pieces. Elaborate masterpieces and exceptional hand carving techniques helped to build the Bourg-Joly Malicorne name and make the products renowned throughout France.

Over the course of our 250-year history, these skills and know-how have been transmitted from generation to generation. Since April 2009, a new generation of enthusiasts is carrying forward the tradition, our history and designs into the 21st century.

Today our craftsmen continue to hand craft and hand paint our products in much the same way as it has been done for over 250 years. In preserving French heritage, our historical traditions and ancestral techniques, we create heirloom pieces both classic and contemporary, that will be enjoyed by generations to come.



Founded in 1747 - 275 years of history





Bourg-Joly Malicorne Today

Building on 18th Century Masters skills and techniques

Today, Bourg-Joly Malicorne uses the finest crafts skills and savoir-faire to produce unique, enduring and durable masterpieces.

An extensive range of exclusive products

Our unique archive of timeless masterpiece collections is inspired by the past but created to last for the future.

Innovative Bespoke Service

Bespoke pieces and collections designed to order. Make your ideas a reality with our experience and know-how.



Recognition for our ancestral Savoir Faire & Industrial Know-How

In September 2010, Bourg-Joly Malicorne, Faïencerie d'art, was awarded the EPV label (Entreprise du Patrimoine Vivant) by the French Industry Ministry. The label is a mark of recognition by the French State, put in place to reward French firms for the excellence of their traditional and industrial know-how.

Bourg-Joly Malicorne received the Atelier d'Art de France label in July 2011 in recognition of its ancestral and unique skills and savoir-faire.







CALIBRATION

TRIMMING

HAND CARVING

GLAZING

HAND PAINTING

FIRING

18th Century Masters Skills and Savoir Faire



The Making Process : Step by Step

CALIBRATION

Aside from our potter's wheel, calibration also known as jiggering, is one of the very few mechanised processes that we use. The prepared clay is weighed and cut to size, then placed in a plaster mould, which itself is held in a mechanical socket that turns.

A large clap arm is lowered on to the mould and with the help of a specially shaped tool, the clay is carefully pressed into the contours of the mould. Once finished, this first basic shape is trimmed and further refined by hand by our master craftsmen.

SCULPTED PIECES

For many of our pieces including vases, saints, animals, fish, birds, fruit and fruit sculptures, the clay is rolled flat, then carefully pressed by hand into a series of moulds to create the various three-dimensional shapes needed.

The clay is left to dry slightly, then carefully lifted from the moulds, before the edges are trimmed by hand. Using slurry (a mixture of clay and water) as a form of glue, the edges of the various forms are then joined together. Once the final three-dimensional piece has come together, it is left once again to dry slightly, before any seams are meticulously smoothed away.



AJOURAGE or OPEN WORK

The style for which Bourg-Joly Malicorne is synonymous is our famous openwork. Using a scalpel and a steady hand, our craftsmen cut away areas of the clay to reveal beautiful lace-like patterns. Every opening is cut and beveled several times to create perfect symmetry and elegance.

This highly skilled technique requires rigor, patience and attention to detail, with every plate taking no less than two hours to complete the openwork. Much copied in style, our work retains its distinctive identity, each piece a testament to the skills of our craftsmen.



FIRING

Once the making process is complete, each piece needs to thoroughly air dry, a process that can take from a few days to several months depending on the size of the piece and the weather.

Each piece is then fired in the kiln at a temperature of 1000°C to transform it into a 'biscuit' or unglazed piece. After firing, it can take several days for the kiln to cool down enough for it to be opened. Each piece is carefully inspected, sanded by hand to remove any imperfections, then dusted, ready to be hand glazed.



GLAZING

Hand glazing is an ancestral technique no longer used in most industrial manufacturing. Using an elegant gesture, the biscuit is completely submerged either by hand or with the use of a pair of tongs into a vat containing the glaze. The biscuit must stay submerged just long enough for every part of the surface to be evenly coated with the glaze. The skill of the craftsman is in knowing how to submerged the biscuit to obtain an even coating.

The biscuit acts like a sponge, absorbing the water from the glaze, leaving only the powdered glaze as a coating on the surface. Finally, the piece is cleaned to remove any excess glaze and touch up any spots of missing glaze with a paint brush.

HAND PAINTING

Once the piece has thoroughly dried after glazing, it is ready to be hand painted. The motif is transferred using a poncif (a stencil covered with tiny pin-sized holes). The poncif is dusted with powdered charcoal leaving delicate trace lines to direct the painter. Using traditional pigments, the painter recreates with motif, building up the colour, layer by layer, a technique not dissimilar to water colour painting.

Complicated motifs can take several hours to complete. During firing in the kiln, the pigments will fuse completely with the glaze, giving it an impeccable and durable finish.









Made to Order and Bespoke service

Bourg-Joly Malicorne collaborates with designers and artists carrying forward our formidable artistic and unique cultural heritage. Our exceptional know-how allows us to continue creating unique and extraordinary masterpieces.

We accompany you in the process of selecting shapes, designs and patterns as well as colours and glazes and help you to select from the endless combinations.

Every item is handmade to order and any of our styles can be ordered with any of the hand painted decoration. We can adapt an existing motif to your taste - add or remove elements, change colours or create a new motif inspired by an existing one.

We can produce custom hand painted designs to your specifications - motifs, names and dates, family crests, initials, monograms or logos.

We can work with you to create pieces to your specifications and personalised as desired.

OETKER COLLECTION

Masterpiece Hotels



THE LANESBOROUGH
LONDON





Photos @wonderrbox_photographyqr



Photos @davidbastianoni

Custom green Chevet openwork dinner plates for a welcome dinner by Sugokuii Events



All photos @davidbastianoni

by Malcom ...



MATERIALS:

All our pieces are entirely handmade, hand glazed and hand painted from earthenware clay in our atelier in Malicorne-sur-Sarthe, France. The whiteness of our clay and the traditional hand glazing techniques we use give our pieces their unique quality.

All of the glazes used on our dinnerware are certified as food safe. Our technique of hand painting on the raw glaze means that once fired, the hand painted motif fuses entirely with the glaze creating a very resilient surface. The motif will not fade or rub away with use.

RECOMMENDATIONS FOR CARE:

Plates and bowls : Dishwasher on a delicate program only but stack each piece with care to avoid the plates touching. Hand washing recommended. Not microwave safe.

Baskets & decorative items : Careful hand washing recommended. Not microwave safe.

Plates & Bowls Collection

1372P Chevet Pleine Dinner plate D29cm
1021pe Perlé Salad plate D25cm
1360 Bourg-Joly ajourée cake plate D19cm





Chevet Pleine plate

- Ref: 1369P Bread D16cm
- 1370P Cake D19cm
- 1371P Salad D24cm
- 1372P Dinner D29cm
- 1375P Charger D33cm



Bourg-Joly Pleine plate

- Ref: 1359P Bread D16cm
- 1360P Cake D19cm
- 1361P Salad D24cm
- 1362P Dinner D29cm
- 1365P Charger D33cm



Photo @landof belle

1372P Chevet Pleine dinner plate D29cm





Chevet pleine sans pied bowl

Ref: 4511P D18cm

4512P D22cm



Martin pleine sans pied bowl

Ref: 4470P D18cm



1372 Chevet Pleine dinner plate D29cm
1021Pe Perle Salad plate D23.5cm
6031 Ronde Festons Pouplard unie bowl D12cm



4511P Chevet Pleine sans pied bowl
in pale pink glaze D18cm



Pale Pink & Pale Grey glazes



1362P Bourg-Joly Pleine Dinner plate D29cm



1372P Chevet Pleine pale grey dinner plate D29cm
1361 Bourg-Joly ajourée pale pink salad plate D24cm



Malicorne pleine sans griffes bowl

Ref: 4011P D11cm
4012P D16cm
4013P D22cm
4014P D29cm



Malicorne Anne bowl

Ref: 4011A D11cm
4012A D16cm
4013A D22cm
4014A D29cm



Restauration pleine bowl
Ref: 4351P D23cm x H10cm



Malicorne rond pleine bord uni sans griffes bowl
Ref: 4011U D11cm x H5cm
4012U D16cm x H6.5cm
4013U D22cm x H8cm
4014U D29cm x H10cm

1372p Chevet Pleine dinner plate D29cm
1361 Bourg-Joly openwork salad plate D24cm





Bourg-Joly ajourée plate

Réf: 1359 Bread D16cm

1360 Cake D19cm

1361 Salad D24cm

1362 Dinner D29cm

1365 Charger D33cm

1372p Chevet Pleine Dinner plate D29cm
1001 Feston Plate D25cm
1360 Bourg-Joly openwork dessert plate D19cm





Bourg-Joly ajourée plate in green glaze

Réf: 1359 Bread D16cm

1360 Cake D19cm

1361 Salad D24cm

1362 Dinner D29cm

1365 Charger D33cm



Chevet ajourée plate in green glaze

Réf: 1369 Bread D16cm

1370 Cake D19cm

1371 Salad D24cm

1372 Dinner D29cm

1375 Charger D33cm

1372 Chevet ajourée openwork dinner plate in green glaze D29cm
1003 Feston Cake plate with hand painted Acorn motif D18cm





Chevet ajourée plate

Ref: 1369 Bread D16cm

1370 Cake D19cm

1371 Salad D24cm

1372 Dinner D29cm

1375 Charger D33cm



Acanthe dessert plate

Ref: 4334 Dessert D24cm

1006 Feston Dinner Plate D29cm
4334 Acanthe dessert plate D23cm





Tulipe footed bowl
Ref: 6071B D12cm x H8cm



Tulipe bowl
Ref: 6071 D12cm x H6cm
6072 D15cm
6073 D17.5cm
6074 D22cm
6075 D25.5cm



New openwork



1019F Feuilles openwork dinner plate D29cm
1021F Feuilles openwork salad plate D23.5cm

1021C Croisillons openwork salad plate D23.5cm
1022C Croisillons openwork Dessert D19.5cm



Croisillons openwork plate

Ref : 1019C Dinner D29cm
1020C Salad D26cm
1021C Small salad D23.5cm
1022C Dessert D19.5cm
1023C Bread D16.5 cm



Feuilles openwork plate

Ref : 1019F Dinner D29cm
1020F Salad D26cm
1021F Small salad D23.5cm
1022F Dessert D19.5cm
1023F Bread D16.5 cm





Louis Philippe dinner plate

Ref: 1371LP Salad Plate D24cm
1372LP Dinner Plate D29cm
1375LP Charger D33cm



Chevet Eventail plate

Ref: 1369E Bread plate D16cm
1370E Dessert Plate D19cm
1371E Salad Plate D24cm
1372E Dinner Plate D29cm
1375E Charger D33cm



Louis Philippe dinner plate Ref: 1372LP D29cm
Chevet Eventail salad plate Ref: 1371E D24cm
Chevet Pleine sans pied bowl Ref: 4511P D18cm
Malicorne Pleine Eventail bowl Ref: 4011E D11cm



Malicorne Pleine Eventail bowl

Ref: 4011E D11cm
4012E D16cm
4013E D22cm
4014E D29cm



1006 Feston Dinner plate D29cm
1002 Feston Dessert plate D22cm
1008 Petit Feston creuse bowl D17.5cm



Festons plate

Ref: 1006 Dinner D29cm
1001 Salad D25cm
1002 Dessert D22cm
1003 Gateau D18cm



Festons Pastilles plate

Ref: 1001P Salad D25cm
1002P Dessert D22cm
1003P Gateau D18cm



Petite Feston Creuse bowl

Ref: 1008 D17.5cm

1006 Feston Dinner plate D29cm
1001 Feston Salad plate D25cm
1008 Petit Feston creuse bowl D17.5cm





Bord uni plate

Ref : 1019 Dinner D29cm

1020 Salad D26cm

1021 Small salad D23.5cm

1022 Dessert D20.5cm

1023 Bread D16.5 cm



Bord uni Pastilles plate

Ref : 1019P Dinner D29cm

1020P Salad D26cm

1021P Small salad D23.5cm

1022P Dessert D20.5cm

1023P Bread D16.5 cm



Bord uni fleurs de lys plate

Ref : 1019F Dinner D29cm

1020F Salad D26cm

1021F Small salad D23.5cm

1022F Dessert D20.5cm

1023F Bread D16.5 cm

1372P Chevet Pleine Dinner plate D29cm
1021pe Perlé Salad plate D25cm
1360 Bourg-Joly ajourée cake plate D19cm





Perle plate (hand rolled pearls)

Ref: 1019pe Dinner D29cm

1020pe Salad D26.5cm

1021pe Salad/Dessert D23.5cm

1022pe Dessert D20.5cm

1023pe Bread D16.5 cm

Godron plate

Ref: 1109 Dinner D27cm

Salad D21.5cm

Making our Perle plate is a labour of love. Hand rolled pearls are applied one by one meticulously to the edge of each plate.



1020pe Perle Salad plate D26.5cm





Feston Louis XVI plate
Ref: 1111 D21.5cm



Double Feston Louis XVI plate
Ref: 1113 D23.5cm





Creuse Feston Louis XV plate
Ref: 1112 D22cm



Feston Louis XV plate
Ref: 1114 D24cm



1362 Bourg-Joly ajourée dinner plate in Navy Blue glaze D29cm
1127 Octogonale Perle Plate in White glaze D24.5cm
4511P Chevet Pleine sans pied bowl in White glaze D18cm



Octogonale perle plate
Ref : 1130 Dinner D29cm
1127 Salad D25cm
1128 Deep D22.5cm
1129 Dessert D19cm
1130 Bread D16.5cm



Octogonale plate
Ref :1027 Plate D23cm
1028 Dessert D18.5cm



1362 Bourg-Joly ajourée dinner plate in Navy Blue glaze D29cm
1127 Octogonale Perle Plate in White glaze D24.5cm
4511P Chevet Pleine sans pied bowl in White glaze D18cm



Leaves

1006 Feston dinner D29cm
1127 Octogonale Perle Plate D24.5cm
1360 Bourg-Joly ajourée dessert plate D19cm
AF0017 Ravier Feuille de Chou dish





Small



Medium



Large



Feuille de vigne plate

Ref: AF001 Small L17.5cm x W17.5cm

Ref: AF002 Medium L24cm x W24.5cm

Ref: AF003 Large L33cm x W33cm

1362 Bourg-Joly openwork dinner plate D29cm
1361p Bourg-Joly Pleine salad plate D24cm
4334 Acanthe dessert plate D23cm
1130 Octogonale Perle cake plate D16cm
AF004 Feuille Nervurée avec tige plate L20cm x W15cm
9481 Feuille de vigne knife rest in white





Small



Medium



Large



Feuille nervurée plate

Ref : 1353 Large L38.5cm

1354 Medium L21cm

1355 Small L13.5cm



Ravier Feuille nervurée dish
Ref: AF009 L20cm x W15.5cm x H6cm



Feuille Nervurée avec tige plate
Ref: AF004 L20cm x W15cm

1006 Feston dinner plate D29cm
1361P Bourg-Joly Pleine salad plate D24cm
1022 Bord uni dessert plate D19cm
AF006 Ravier Feuille en courbe dish





Ravier Feuille de Chou dish
Ref: AF0017 L20cm x W12cm x H5cm



Ravier Feuille en courbe dish
Ref: AF006 L22cm x W10cm x H4cm



Feuille de chou plate
Ref: AF005 L23.5cm x W14cm

Serving Dishes



Coupe Acanthe Ronde dish
Ref: 4331 D35cm



Coupe Acanthe Ronde sur pied bas dish
Ref: 4331 D35cm

Photo @emporia_doma





Coupe Acanthe Ovale dish
Ref: 4332 L35cm x W30cm



Plat Rond Feston plates & serving dishes

Ref : 1101 D27cm

1102 D29cm

1103 D33cm

1104 D35cm

1106 D40cm



Plat Ovale Festons serving dish

Réf : 1031 L27cm

1032 L31cm

1033 L34cm

1034 L38cm

1035 L42cm

1036 L44cm

1037 L49cm



Plat à Poissons Festons serving dish

Ref : 1041 L51cm

1042 L62cm



Plat Forme Poisson Pouplard serving dish

Ref : 1052 L52cm x W25cm

1053 L71cm x W37cm

1054 L77cm x W40cm



Jatte rectangular serving dish

Ref: 6005 L28cm x W23cm
6006

Jatte carrée square serving dish

Ref: 6001 L11cm x W11cm
6002 L14cm x W14cm
6003 L18cm x W18cm
6004 L23cm x W23cm



Saladier Louis XV Festons serving dish

Ref: 6051 D21cm
6052 D24cm
6053 D26cm
6054 D27cm
6055 D32cm

1372P Chevet Pleine Dinner plate D29cm
1021pe Perlé Salad plate D25cm
6032 Ronde Feston Pouplard Uni bowl D16cm





Jatte Ronde Feston Pouplard Uni bowls and serving dishes

- Réf: 6031 D12cm
- 6032 D16cm
- 6033 D21cm
- 6034 D26cm



Bourg-Joly openwork serving platter
Ref: 1363 Presentation D44cm



Bourg-Joly Pleine serving platter
Ref: 1363P Presentation D44cm

Hand cutting the edge of a Chevet Pleine Dinner plate





Chevet Pleine serving platter

Ref: 1363CH D44cm



Chevet Pleine Oval serving platter

Ref: 1161CH L36cm x W23cm

1162CH L41cm x W27cm



Jatte Chevet carrée square serving dish

Réf: 6001CH L11cm x L11cm

6002CH L14cm x L14cm

6003CH L18cm x L18cm

6004CH L23cm x L23cm



Jatte Chevet rectangular serving dish

Réf: 6005CH L28cm x L23cm

6006CH

Trays



Chevet edge tray

Ref 9701 : L18cm x W11cm x H1.5cm

9702 : L25cm x 16cm x H1.5cm



Perlée edge tray

Ref 9801 : L18cm x W11cm x H1.5cm

9802 : L25cm x 16cm x H1.5cm



Rectangulaire bord uni tortillons platter

Ref : 1383 L28cm x W20.5cm

1384 L35cm x W23.5cm

Small Dishes, Trinket & Soap dishes

Available with or without drainage holes



Demi Godron
W13.5cm x H10cm



Feuille d'Erable



Petite Feuille nevrée
L13.5cm



Rectangle Festons Plat
W11cm x H9cm



Rond petit festons
D9cm



Octogonale bord perles
D12cm



Rectangle Uni Plat
W11cm x H8cm



Rectangle Feston creux
L12 x W9 cm



Louis Philippe
L10.5 cm x W9.5 cm



Octagone bord uni
L11.5 x W10 cm



Hexagone bord uni
D10.5 cm



Louis XV creux
L12 x W14.5 cm



Louis XVI plat
L14 x W10.5 cm



Tea & Coffee



Dejeuner pointu cup

Ref: 2041 Cup D8cm x H5.5cm
2042 Cup D11cm x H7.5cm



Dejeuner pointu cup with saucer

Ref: 2021 Cup D8cm x H5.5cm Saucer D11cm
2022 Cup D11cm x H7.5cm Saucer D16.5cm

Bourg-Joly Pleine saucer

Ref: 1359P Saucer D16cm





Tasse bas une anse cup with one handle & saucer
Ref: 2061 D13cm



Tasse bas deux anses cup with two handles & saucer
Ref: 2081 D13cm



Mug

Ref: 2201 D8cm x H5cm

2202 D11cm x H7cm

2203 D11cm x H11.5cm



Coffee cup & saucer

Ref: 2190 Moka Cup D5cm x H5

2191 Coffee Cup D6cm x H6cm

2193 Large Coffee Cup D7.5cm x D7.5cm

Saucer D10.5cm

1021pe Perle Salad Plate D23.5cm
4521 Chevet sur pied haut basket D18cm x H9cm
1371 Chevet ajourée salad plate D24cm





Round lidded butter dish
Ref: 9150 D14cm x H11cm



The Monaco Collection



Prince Albert II & Princess Charlene of Monaco

Bourg-Joly Malicorne had the great honour of creating 342 baskets to decorate the tables for the Monaco Royal Wedding dinner of Prince Albert II to Princess Charlene held at the Opéra Garnier on 2nd July 2011.



Text taken from the official site of the Marriage of Monaco Royal Wedding

Honouring the Art of the table

Tables dressed in white & set with tableware selected and created for the wedding, the pieces discreetly enhance the presentation of the dishes without dominating them. The tableware forms part of the spontaneous ballet that is the grand dinner.

Tables set with flowers displayed in our baskets at the Monaco Royal wedding





Ref: 4471 Bourg-Joly découpage droit sur pied bas basket



Ref: 4361 Bourg-Joly découpage droit sur pied haut basket



Ref: 4492 Martin sur pied haut basket



Ref: 4563 Empire Vézanne sur griffes basket



Ref: 4553 Empire Vézanne sans griffes basket



Ref: 4541 Vézanne sur pied haut basket

Tables set with flowers displayed in our baskets at the Monaco Royal wedding





Gilt Basket Collection

© Bourg-Joly Malicorne - www.malicorne.com



Reynaud croisillons sur pied haut basket with hand gilt decoration

Ref: 4171R D22cm x H19cm



Bourg-Joly sur pied haut basket with hand gilt decoration

4413R D22cm x H19cm

4414R D29cm x H21.5cm





Restauration sur pied haut basket with hand gilt decoration

Ref: 4353 D23 cm x H21cm



Restauration sur griffes basket with hand gilt decoration

Ref: 4352 D23cm



Bourg-Joly sur pied haut basket with hand gilt decoration

4481 D22cm x H17cm

4360 D18cm x H12cm

4361 D23cm x H15cm

4362 D26cm x H17cm



Bourg-Joly sur griffes basket with hand gilt decoration

Ref: 4421 D11cm

4422 D18cm

4423 D22cm

4424 D29cm



Bourg-Joly découpage droit sur pied bas basket with hand gilt decoration

Ref: 4471 D18cm x H7cm

4472 D22 cm x H9cm

4473 D29cm x H11cm



Bourg-Joly Basket Collection



Bourg-Joly sans griffes basket

Ref: 4411 D11cm

4412 D18cm

4413 D22cm

4414 D29cm







Bourg-Joly sur griffes basket

Ref: 4421 D11cm

4422 D18cm

4423 D22cm

4424 D29cm



45741 Shamaya sans colombin basket
4013 Malicorne sans griffes basket D22cm





Malicorne sans griffes basket

Ref: 4011 D11cm
4012 D16cm
4013 D22cm
4014 D29cm

Malicorne avec griffes basket
(with clawed feet)

Réf: 4021 D11cm
4022 D16cm
4023 D22cm
4024 D29cm



4413RR Bourg-Joly sur
pedestal restoration basket
D22cm x H19cm

*Bourg-Joly Malicorne
handmade in France
since 1747*



Bourg-Joly sur pied restauration basket

Ref: 4413R D22cm x H19cm
4414R D29cm x H21.5cm

**Bourg-Joly sur pied haut
basket (high foot)**

Ref: 4411H D11cm x H7cm
4412HD18cm x H8.5cm
4413H D22cm x H19cm



**Bourg-Joly sur pied bas
basket (low foot)**

Ref: 4412B D18cm x H8cm
4413B D22cm x H11cm







Bourg-Joly sur pied haut basket

Ref: 4481 D22cm x H17cm

4360 D18cm x H12cm

4361 D23cm x H15cm

4362 D28cm x H17cm





4472 Bourg-Joly découpage droit
sur pied bas basket D22 cm x H9cm



Bourg-Joly découpage droit sur pied bas basket

Ref: 4471 D18 cm x H7cm

4472 D22 cm x H9cm

4473 D29 cm x H11cm



Bourg-Joly découpage droit sans Pied

Ref: 4471S D18 cm x H7cm

4472S D22 cm x H9cm

4473S D29 cm x H11cm



Bourg-Joly à pied ajouré avec
anneaux cache pot (with rings)

Ref: 3041 D15cm x H12cm

3042 D18cm x H14cm

3043 D24cm x H19cm

3044 D30cm x H22cm

3045 D38cm x H28cm

Bourg-Joly à pied ajouré sans
anneaux cache pot (without rings)

Ref: 3031 D15cm x H12cm

3032 D18cm x H14cm

3033 D24cm x H19cm

3034 D30cm x H22cm

3035 D38cm x H28cm





Ref: 4471 Bourg-Joly découpage droit sur pied bas basket



Ref: 4422 Bourg-Joly découpage fin sur griffes basket



Ref: 4012 Malicorne ajourée sans griffes basket



Ref: 4361 Bourg-Joly découpage droit sur pied haut basket



Ref: 1362 Bourg-Joly openwork dinner plate



Ref: 3041 Bourg-Joly à pied ajourée avec anneaux cache pot



Restauration Basket Collection



Restauration sur pied haut basket
Ref: 4353 D23cm x H21cm



4353 Restauration sur pied haut
basket in green D23cm x H21cm





Restauration sans griffes basket
Ref: 4351 D23cm x H10cm





Restauration sur griffes basket

Ref: 4352 D23cm x H12cm





Empire avec anneaux avec intérieur cache pot
(with rings and interior)

Ref: 3181 D14 cm x H10cm
3182 D18 cm x H14cm
3183 D23 cm x H19cm

Empire avec anneaux sans intérieur cache pot
(with rings, without interior)

Ref: 3171 D14 cm x H10cm
3172 D18 cm x H14cm
3173 D23 cm x H19cm



Photo by @setwithgrace

© Bourg-Joly Malicorne - www.malicorne.com



Ref: 4351 Restauration sans griffes basket



Ref: 4352 Restauration sur griffes basket



Ref: 4353 Restauration sur pied basket



Ref: 4351P Restauration pleine sans griffes bowl



Ref: 4011P Malicorne pleine sans griffes bowl



Ref: 3182 Empire avec intérieur, avec anneaux cache pot



Vezeanne Basket Collection



Empire Vézanne sur griffes basket

Ref: 4561 D11 cm

4562 D18 cm

4563 D22 cm

4564 D29 cm





Empire Vézanne sans griffes basket

Ref: 4551 D11cm

4552 D18cm

4553 D22cm

4554 D29cm





Empire Vézanne sans griffes sur pied haut basket
Ref: 4552H D18.5 cm x H12.5cm
4553H D22 cm x H19cm





Empire Vézanne sur pied bas basket

Ref: 4531 D18 cm x H7cm

4532 D22 cm x H9cm

4533 D29 cm x H9cm





Empire Vezanne sur pied haut basket

Ref: 4541 D18cm X H12cm

4542 D22cm X H12cm

4543 D29cm X H12cm





Chevet sur pied haut basket

Ref: 4521 D18cm x H9cm

4522 D22cm x H12cm

4523 D30cm x H12cm





Chevet sur pied bas basket

Ref: 4511 D18 cm
4512 D22 cm
4513 D29 cm





Martin sur pied bas basket

Ref: 4102 D11cm

4112 D23 cm x H10cm

4122 D30cm x H10cm





Martin sur pied haut basket

Ref: 4490 D18cm x H12cm

4491 D22cm X H7cm

4492 D30cm X H17cm





Compotier sur pied haut footed bowl
Ref: 4381 D23cm
4382 D28cm





Anne sur pied haut footed bowl
Ref: 4491A D22cm x H16cm





Ref: 4112 Martin sur pied bas basket



Ref: 4491A Compotier Anne sur pied haut footed bowl



Ref: 4511 Chevet sur pied bas basket



Ref: 4492 Martin sur pied haut basket



Ref: 4381 Compotier sur pied haut footed bowl



Ref: 4522 Chevet sur pied haut basket

4171 Reynaud à croisillons basket D22cm





Reynaud à croisillons basket
Ref: 4171 D22cm





Reynaud croisillons sur pied restauration basket
Ref: 4171R D22cm x H19cm



Photo @studiolodha



4434R Louis Philippe sur pied
restauration basket D29cm x H21cm



Louis Philippe sur pied restauration basket
Ref: 4434R D29cm x H21cm



Louis Phillipe basket

Ref: 4432 D18cm
4433 D22cm
4434 D29cm

Louis Phillipe avec griffes basket
(with feet)

Ref: 4442 D18cm
4443 D22cm
4444 D29cm





Louis Phillipe sur pied haut basket
Ref: 4432H D18.5cm x H12.5cm
4433H D21.5cm x H19cm



Louis Phillipe sur pied bas basket
Ref: 4433B D21.5cm x H11cm



Saint Maurice basket

Ref: 4031 D17 cm

4032 D21cm

4033 D24 cm

4034 D26 cm

4035 D28 cm





Saint Maurice sur pied bas basket

Ref: 4033B D24cm x 10cm



Ref: 4033B Saint Maurice sur pied bas basket



Ref: 4433B Louis Phillipe sur pied bas basket



Ref: 4432H Louis Phillipe sur pied haut basket



Ref: 4171 Reynaud a croisillons basket



Ref: 4433 Louis Phillipe basket



Ref: 4032 Saint Maurice basket

Shamaya Basket Collection





Shamaya sans colombin basket

Ref: 45721 D16cm base

45731 D18cm base

45741 D24cm base

45751 D30cm base





Shamaya simple colombin basket

Ref : 45722 D16cm base x H8cm

45732 D18cm base x H9cm

45742 D24cm base x H10cm

45752 D30cm base x H11cm





Shamaya Moreau double colombin basket
Ref: 45763 D27 cm



Shamaya Moreau sans colombin basket
Ref: 45761 D27cm





Shamaya Moreau sans colombin sur pied haut basket
Ref: 45761H D27cm x H11cm





Ref: 4573 Shamaya sans colombin basket



Ref: 4574 Shamaya simple colombin basket



Ref: 45763 Shamaya Moreau double colombin basket



Ref: 45761 Shamaya Moreau sans colombin basket



Ref: 45761H Shamaya Moreau sans colombin sur pied haut basket

Cake Stands





Plat a tarte festons sur pied
bas cake plate (low foot)

Réf: 1233b D28cm x H5cm



Plat a tarte festons sur pied
haut cake plate (high foot)

Réf: 1233h D28cm x H11cm

Plat a tarte festons sur pied
restauration cake plate
(restauration foot)

Réf: 1233r D28cm x H11cm



Bourg-Joly sur pied bas openwork cake plate
(low foot)

Réf: 1360b D19.5cm x H2cm
1361b D24.5cm x H3cm
1362b D29.5cm x H3cm



Bourg-Joly sur pied haut openwork cake plate (high foot)

Réf: 1360h D19.5cm x H6.5cm

1361h D24.5cm x H9cm

1362h D29.5cm x H9cm



Chevet sur pied bas openwork cake plate
(low foot)

Réf: 1370B D19.5cm x H2cm

1371B D24.5cm x H3cm

1372B D29.5cm x H3cm



Chevet sur pied haut openwork cake stand (high foot)

Réf: 1360h D19.5cm x H6.5cm

1361h D24.5cm x H9cm

1362h D29.5cm x H9cm



Chevet sur pied Restauration openwork cake plate (Restauration foot)

Réf: 1372r D29.5cm x H11cm



Cache Pots & Vases



Cache-pot Empire ajouré avec intérieur et anneaux (with interior cache pot, with rings)

Réf: 3181: D14cm x H10cm
3182: D18cm x H14cm
3183: D24cm x H19cm



Cache-pot Empire ajouré sans intérieur et anneaux (without interior, with rings)

Réf: 3171: D14cm x H10cm
3172: D18cm x H14cm
3173: D24cm x H19cm



Cache-pot ajouré Bourg-Joly
avec anneaux (with rings)

Réf: 3041: D15.5cm x H12cm
3042: D18cm x H14cm
3043: D24.5cm x H18cm
3044: D29cm x H22cm

Cache-pot ajouré Bourg-Joly sans
anneaux (without rings)

Réf: 3031: D15.5cm x H12cm
3032: D18cm x H14cm
3033: D24.5cm x H18cm
3034: D29cm x H22cm



Photo by @easthamptongardens



Cache-pot Godrons avec anneaux
(with rings)

Réf: 3111: D17cm x H13cm
3112: D21cm x H15cm
3113: D25cm x H19cm
3114: D31cm x H24cm
3115: D38cm x H29cm



Cache-pot Godrons Inverse sans
anneaux (without rings)

Réf: 3116: D21cm x H15cm
3117: D25cm x H19cm
3118: D31cm x H24cm
3119: D38cm x H29cm





Cache-pot Ajouré S sans anneaux

Réf: 3071: D15cm x H12cm
 3072: D18cm x H14cm
 3073: D24cm x H19cm
 3074: D30cm x H22cm
 3075: D38cm x H28cm

Cache-pot Ajouré Morse

Réf: 3051: D15cm x H12cm
 3052: D18cm x H14cm
 3053: D24cm x H19cm
 3054: D30cm x H22cm
 3055: D38cm x H28cm

Cache-pot Ajouré Roche sans anneaux

Réf: 3091: D cm x H cm
 3092: D cm x H cm
 3093: D31cm x H23cm



Cache-pot anses fruits

Réf: 3141: D11cm x H10cm
3142: D13cm x H12cm
3143: D15cm x H14cm
3144: D18cm x H16cm
3145: D19cm x H17cm
3146: D24cm x H23cm



Cache-pot anses anciennes

Réf: 3161: D11cm x H10cm
3162: D14cm x H13cm
3163: D18cm x H16cm
3164: D21cm x H19cm
3165: D24cm x H22cm
3166: D27cm x H26cm



Cache-pot a cotes

Réf: 3771: D18cm x H16cm
3772: D21.5 cm x H18cm
3773: D26.5cm x H22cm

3241 Jardinière Ovale à festons





Jardinère Ovale Dentelée

Réf: 3231: L24cm x W17cm
3232: L40cm x H18cm



Jardinère ajourée Ovale Dentelée raisins

Réf: 3301: L12cm 3303: L24cm
3302: L18cm 3305: L26cm



Jardinère Ovale Medicis

Réf: 3251: L37cm x W20cm x H16cm



Jardinère Ovale à festons

Réf: 3241: L32cm x W19cm x H11cm



Vase Medicis Godrons sans anse

- Réf: 3571: D10cm x H20cm
3572: D13cm x H25cm
3573: D16cm x H30cm
3574: D22cm x H34cm
3575: D25cm x H38cm



Medicis Dentele
sur pied vase
Réf: 3541: H26cm



Florentin vase
Réf: 3851: H26cm
3852: H32cm



Double Gourde vase
Réf: 3501: H27cm x D16cm
3502: H37cm
3503: H44cm x D25cm



Bouteille Godrons vase
Réf: 3511: H20cm
3512: H29cm
3513: H39cm
3514: H46cm



Pichet Melon Jug
Réf: 7471: H24cm x D21cm

Fruits







Pomme
Apple
Green

Ref: F015 L7cmx H5cm



Pomme
Apple
Red Yellow

Ref: F015 L7cmx H5cm



Pomme
Apple
Red

Ref: F015 L7cmx H5cm



Pomme
Apple
Yellow

Ref: F015 L7cmx H5cm



Poire
Pear

Red Yellow Green

Ref: F014 L10cm x H7cm



Poire
Pear

Red Yellow

Ref: F014 L10cm x H7cm



Poire
Pear

Yellow

Ref: F014 L10cm x H7cm



Poire
Pear

Green

Ref: F014 L10cm x H7cm





Noix
Walnut

Ref: F010
L5cm x H4cm



Abricot
Apricot

Ref: F001
L6cm x H5cm



Raisins bleus
Blue Grapes

Ref: F017 L17cm x L11cm
Ref: F018 L10cm x L6cm



Banane
Banana

Ref: F002
L16cm x H4cm



Grenade
Pomegranate

Ref: F008
L8cm x H6.5cm x
L7.5cm



Raisins verts
Green Grapes

Ref: F017 L17cm x L11cm
Ref: F018 L10cm x L6cm



Prune violette
Purple Plum

Ref: F016 L5cm x H4cm



Prune verte
Green Plum

Ref: F016 L5cm x H4cm



Prune jaune
Yellow Plum

Ref: F016 L5cm x H4cm



Clementine
Clementine

Ref: F004 L6cm x H4cm



Figue
Fig

Ref: F005 L5cm x L3cm



Fraise
Strawberry

Ref: F006 L5cm x H3cm



Orange
Orange

Ref: F012 L9cm x L9cm



Citron
Lemon

Ref: F003 L9cmx H6cm

1006 Feston Dinner Plate D29cm
4334 Acanthe dessert plate D23cm
6031 Ronde Feston Pouplard Uni bowl D12cm
F005 Hand Painted Figs



Candle Sticks



Bougeoir fruits
Ref: 9443 H8cm x D11cm

Candle Sticks



Chandelier rond uni
sur pied rond

Ref:9074

H19.5cm x D12cm



Chandelier rond
uni sur pied plat

Ref:9075

H21cm x D12cm



Chandelier octogonal

Ref:9076

H19cm x D12cm



Chandelier à anse
Ref: 9073
H18.5cm x D16cm



Chandelier
Ref:
H10cm x D17cm



Bourgoir sans anse
Ref: 9072
H11cm x D13cm



Bourgoir à anse
Ref: 9071
H12cm x D14cm

Bourg Joly - Standard Glaze Colours



1372p Chevet Pleine dinner plate in Pale Pink glaze
1371 Chevet ajourée salad plate D24cm in White glaze



1372p Chevet Pleine dinner plate in Pale Grey glaze D29cm


1361 Bourg-Joly ajourée salad plate in White glaze D24cm

6031 Ronde Festons Pouplard Uni bowl in White glaze D12cm




1362 Bourg-Joly ajourée dinner plate in Navy Blue glaze D29cm
1361p Bourg-Joly Pleine salad plate in White glaze D24cm
1360 Bourg-Joly ajourée dessert plate in Navy Blue glaze D19cm





1362 Bourg-Joly ajourée dinner plate in Bordeaux glaze D29cm
1361 Bourg-Joly ajourée salad plate in Bordeaux glaze D24cm



1372pChevet Pleine dinner plate in Navy Blue glaze D29cm
1361p Bourg-Joly Pleine salad plate in White glaze D24cm
1022 Bord Uni dessert plate with hand painted Semis bordure motif in raspberry D19.5



Bordeaux glaze



AF003 Large Feuille de vigne dinner plate in Green glaze L33cm x W33cm
1002 Feston dessert plate in white glaze with hand painted Pouplard Green Prunes motif D22

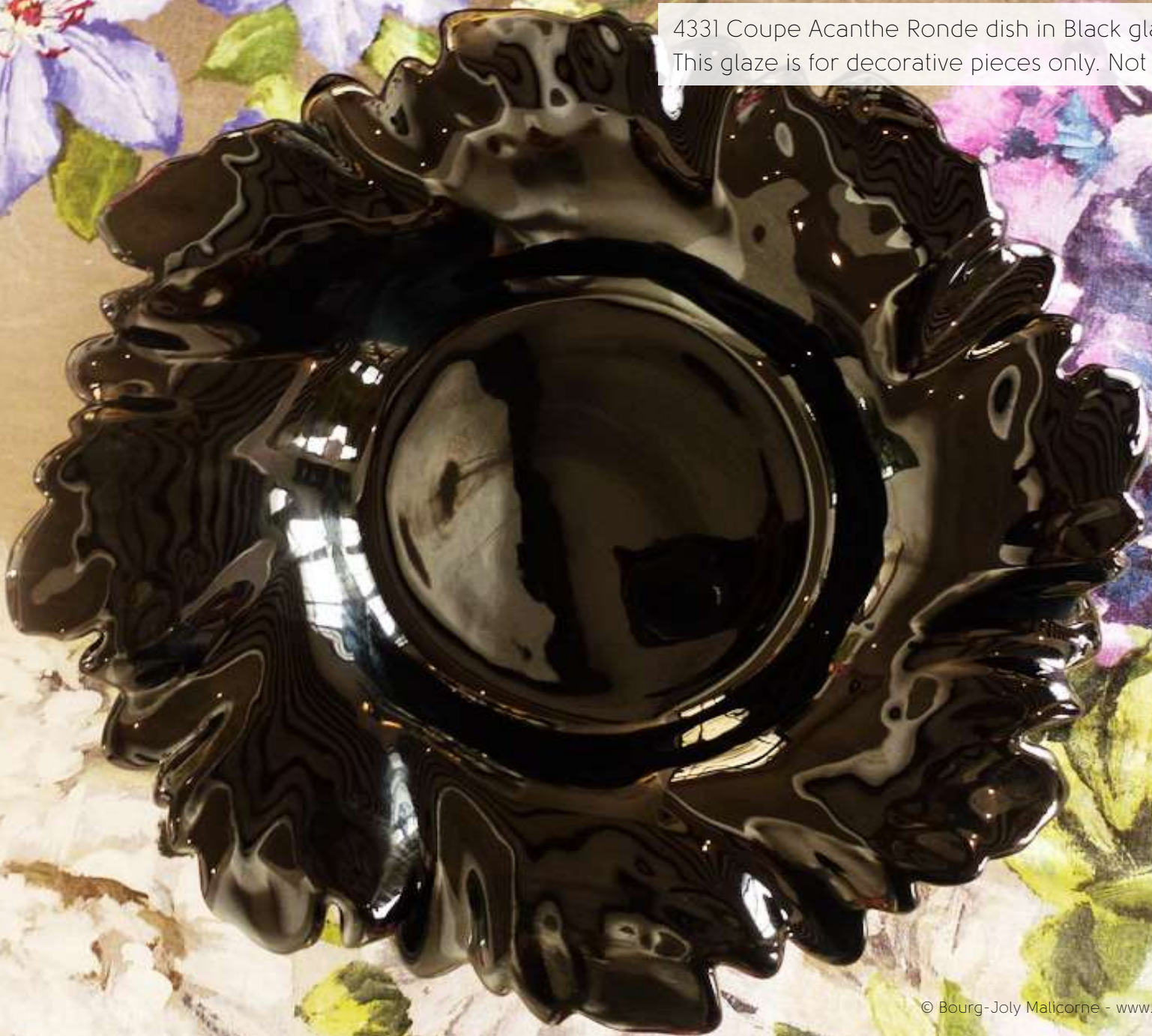


4411 Bourg-Joly sans griffes basket in Dark Grey glaze D11cm

Rond Feston serving dish in Blue White glaze
with hand painted Delft motif in blues & greys



4331 Coupe Acanthe Ronde dish in Black glaze.
This glaze is for decorative pieces only. Not food safe.





Bourg-Joly
Malicorne

Hand Painted colours



Some examples of our hand painted colours and their different tones

Hand Painted colours



Some examples of our hand painted colours and their different tones

Hand Painted Decoration



Pouplard Fruits



Gooseberries / Groseilles à maquereau



Strawberries / Fraises



Purple Grapes / Raisins violets



Apples / Pommes



Cherries / Cerises

Pouplard Fruits



Plums / Prunes vert



Red currants / Groseilles





Redouté

Amaryllis Josephinae

Redouté



Rosier de Candolle



Anemones



Tulipes



Pois Senteur polychrome



Pois Senteur blue monochrome



Ipomaea quamoclit



Pivoine de Chine



Framboises



Geranium

St Omer



St Omer Monochrome
Grey with filet



St Omer arbre
Polychrome with filet



St Omer Monochrome
Green with filet



St Omer Monochrome Prune



St Omer Monochrome Green
with filet



St Omer Polychrome
with filet



St Omer Monochrome
Prune with filet

Antique Fruits Polychrome



Antique Fruits 69



Antique Fruits 94



Antique Fruits 75



Antique Fruits 76



Antique Fruits 77



Antique Fruits 72



Antique Fruits 73



Antique Fruits 79



Antique Fruits 80



Antique Fruits 78



Antique Fruits 2



Antique Fruits 3



Antique Fruits 70



Antique Fruits 74



Antique Fruits 79

Antique Fleurs Polychrome



Antique Fleurs 88



Antique Fleurs 87



Antique Fleurs 2



Antique Fleurs 91



Antique Fleurs 81



Antique Fleurs 89



Antique Panier



Antique Fleurs 95



Antique Fleurs 94



Antique Fleurs 7



Antique Fleurs 90



Antique Fleurs 92



Antique Fleurs 93



Antique Fleurs 98



Antique Fleurs 1

Antique Fleurs Green & Orange Monochrome



Antique Fleurs Green & Orange Monochrome



Antique Fleurs Monochrome



89 Monochrome Raspberry



93 Monochrome Grey



1 Monochrome Blue



87 Monochrome Grey



2 Monochrome Blue



94 Monochrome Raspberry



92 Monochrome Grey



88 Monochrome Raspberry



2 Monochrome Raspberry



88 Monochrome Raspberry



94 Monochrome Raspberry



90 Monochrome Raspberry

Antique Feuilles



Antique Feuilles
Blue with Yellow filet



Antique Feuilles
Blue with Blue filet



Antique Feuilles
Raspberry monochrome



Antique Feuilles
Blue monochrome





Guirlande de baies



Antique Fleurs Wreath 87
Pink & Green Polychrome



Antique Fleurs Wreath 87
Pink monochrome



Mongolfière Green Monochrome

Photo @shoptheavenue



Mongolfière Green Monochrome



Montgolfière 1



Montgolfière 2



Montgolfière 3



Montgolfière – Je suis libre



Montgolfière – A l'immortalité



Montgolfière – La folie du siècle

Photo @bea_satruestegui



Mongolfière Monochrome



Montgolfière 4 Grey



Montgolfière 2 Blue



Montgolfière 3 Grey



Montgolfière – Je suis libre Grey



Montgolfière – A l'immortalité Blue



Montgolfière – Bon Voyage Grey

Mongolfière Polychrome



Mongolfière Polychrome



Fleurs des Champs



Coquelicot 1 / Poppies 1



Lys / Lilies



Irises / Irises



Coquelicot 2 / Poppies 2



Jonquilles / Daffodils



Marguerites / Daisies

Fleurs des Champs



Fleurs de Champs



Muguets / Lily of the Valley



Grosses Fleurs 1



Hortensias



Pensées



Grosses Fleurs 2

Rouen Panier



Rouen Coq Panier



Rouen Panier Riche Polychrome



Rouen Panier Polychrome



Rouen Panier Riche Monochrome
Blue



Rouen / Grenoble Panier Monochrome
Blue



Rouen Panier Polychrome



Rouen Panier



Rouen Panier Monochrome Blue



Rouen Panier Polychrome



Rouen Panier Polychrome



Rouen Corne Polychrome



Rouen Panier Polychrome



Rouen Corne d'Abondance
Riche Polychrome



Rouen Corne Abundance Oiseaux monochrome blue



La Rochelle polychrome



La Rochelle monochrome blue



Sinceny polychrome



Sinceny monochrome Prune



Sinceny monochrome Grey

Romantique

11 different colour options



Romantique 6



Romantique 7

Topiaire



Topiaire 1



Topiaire 2



Topiaire 3



Topiaire 4



Topiaire 5



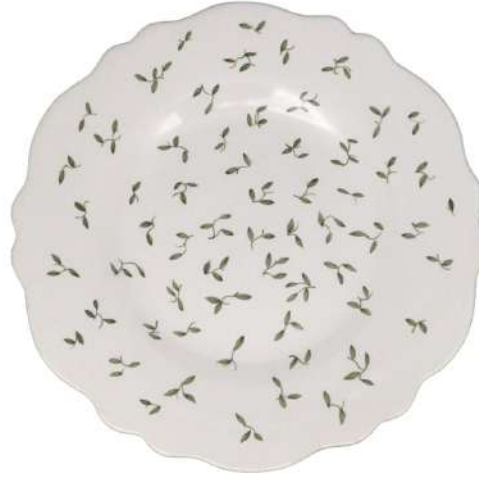
Topiaire 6

1006 Feston dinner plate with Semis green motif,
1002 Feston dessert plate with Semis green motif,
4511P Chevet Pleine bowl with a green filet

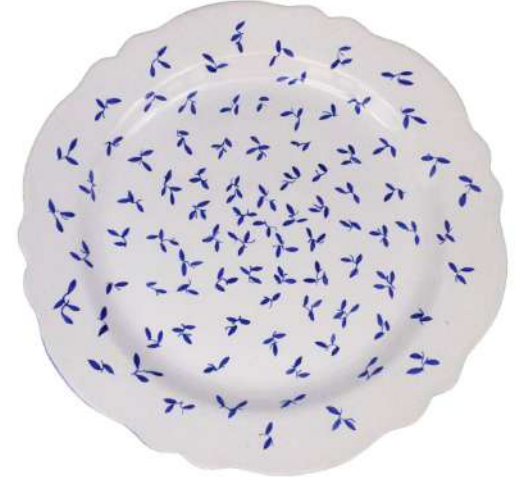




Iznik Tulipes



Semis Green



Semis Blue



Iznik Bird



Agapanthes



Delft Panier

1006 Feston Dinner plate with Strasbourg Wreath hand painted motif



Strasbourg



Strasbourg Couronne



Strasbourg Panier



Strasbourg Fleurs Monochrome Blue



Strasbourg Wreath



Strasbourg Coq Panier



Strasbourg Fleurs Monochrome Raspberry

Strasbourg Fleurs Polychrome



Strasbourg Fleurs 4



Strasbourg Fleurs 9



Strasbourg Fleurs 5



Strasbourg Fleurs 6



Strasbourg Fleurs 3



Strasbourg Fleurs 7



Strasbourg Fleurs 7



Moustiers polychrome



Moustiers 16



Moustiers 21



Moustiers 20



Moustiers 19



Moustiers 18



Moustiers 14



Moustiers 13



Moustiers 12



Moustiers 6



Moustiers 15



Moustiers 4



Moustiers 5



Moustiers 1



Moustiers Fleurs



Moustiers 3

Moustiers monochrome



Moustiers 10 Violet Monochrome



Moustiers 9 Green Monochrome



Moustiers Riche Blue Monochrome



Moustiers 7 Violet Monochrome



Moustiers 8 Violet Monochrome



Moustiers Riche Raspberry Monochrome

1001 Feston Salad plate with hand painted Chinoiserie 5 Green motif

Photo @ myvintagecorner



Chinoiserie Monochrome



Chinoiserie 7
Raspberry



Chinoiserie 7
Blue



Chinoiserie 4
Raspberry



Chinoiserie 2
Orange



Chinoiserie 5
Orange



Chinoiserie 1
Turquoise



Chinoiserie 2
Turquoise



Chinoiserie 5
Green



Chinoiserie 6
Raspberry



1362p Bourrg-Joly Pleine Dinner plate in Pale Pink glaze
1001 Feston salad plate with hand painted Chinoiserie 6 Raspberry motif



Chinoiserie Riche polychrome



Chinoiserie 3 monochrome turquoise



Bateaux



Bateau Riche
blue



Bateau 2
Raspberry



Bateau 1
Grey



Bateau 4
Blue



Bateau 2
Orange



Bateau 10
Orange



Bateau 8
Blue



Bateau 9
Green



Bateau 6
Grey



Bateau 7
Blue



Bateau 11
Grey



Bateau 4
Orange



Bateau 5
Blue



Bateau 3
Green

Revolution Blue, Red & Grey



Revolution Polychrome



Revolution Polychrome



Revolution Polychrome



Revolution Polychrome





Decorative Eggs

Decorative Eggs







Animals Collection
by Master Ceramicist Léon Pouplard
1890 -1953





Hand painted Native Birds by Léon Pouplard



Hand painted Grand coq maxi H60cm x W50cm



Grand coq in white glaze H60cm x W50cm





Hand painted
Cormoran 1









Pouplard Ducks







A detailed still life sculpture of various fruits including apples, grapes, and pears, with a white flower in the foreground. The sculpture is highly detailed, showing the textures of the fruit skins and the intricate details of the leaves and stems. The background is softly blurred, showing warm, bokeh light effects.

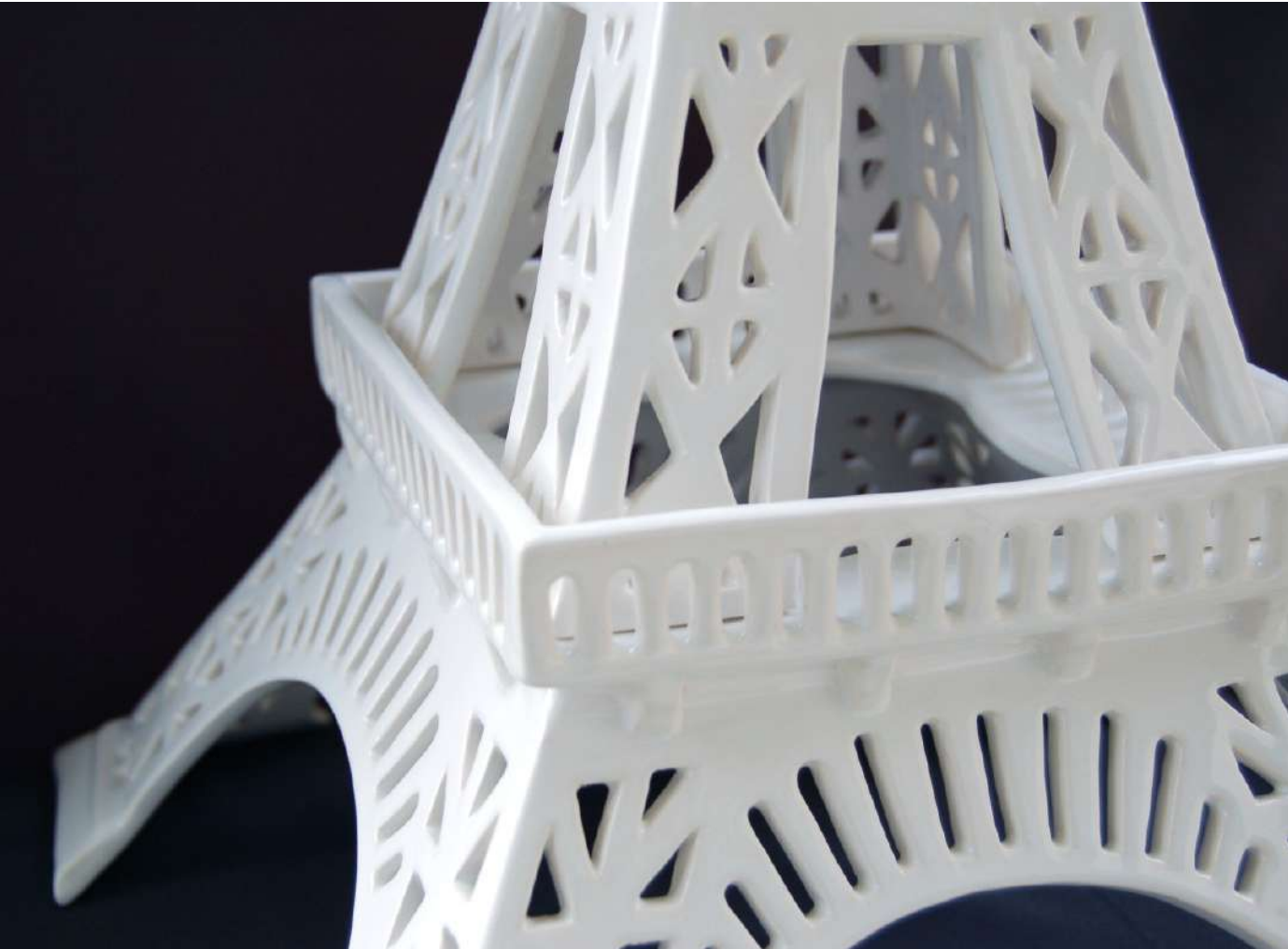
The Treasures of Bourg-Joly Malicorne

A small selection of bespoke,
made to order pieces
& Artist collaborations





Limited Edition - Le collier de Bourg_Joly Malicorne & David Michael Clark
Version 1: 8 meter long, Pearls D35cm
Version 2: Pearls D10 cm
Version 3: Necklace Pearls D2cm



La Tour Eiffel H70cm



Embroidered baskets Bourg-Joly Malicorne & Michèle Rabard





Vase Versaille brodé Bourg-Joly Malicorne & Michèle Rabard



Limited Edition plates celebrating the 80th edition of the 24h du Mans Classic



Limited Edition serving plate D44cm
Le Mans retrospective 1923 – 2023



Limited Edition serving plate D44cm
24h du Mans Classic



Limited Edition serving plate D44cm
80th edition of the
24h du Mans Classic



Jeu de l'oie - Traditional game of 64 handpainted pieces, 2010. D100cm



Pot a crème with hand painted monogram

Fruit Baskets







Hand painted Vase saxe with fruit



Vase saxe with fruit in White glaze



Comptier with hand painted lemons





WHOLESALE & PRESS ENQUIRIES:

Janette Spalter
contact@malicorne.com
Tel +33(0)6 24 80 87 85

www.malicorne.com

INSTAGRAM: [bourg_joly_malicorne](https://www.instagram.com/bourg_joly_malicorne)

PINTEREST: [bourgjolymalico](https://www.pinterest.com/bourgjolymalico)

FACEBOOK: [bourgjolymalicorne](https://www.facebook.com/bourgjolymalicorne)

SHOP & ATELIER:

Bourg-Joly Malicorne - Faïencerie d'Art
16 rue Carnot,
72270 Malicorne-sur-Sarthe
France
Tel: +33(0)2 43 94 80 10



Bourg-Joly
Malicorne
depuis 1747