

Electronic Cruise Control for **HONDA VFR800F & FD Interceptor** **From 2014**



The following provides a brief description of the power consumption and component locations of the MotorCycle Setup electronic cruise control.

Installed weight of the cruise control is approximately 2.3kg.

Current draw while the cruise is switched on, but not engaged, is approximately 0.10 amp (1 watts). Current draw while the cruise is engaged is nominally 0.50~0.80 amp (6~10 Watts).

By comparison, a head light bulb typically draws about 4 amps (55 Watts), and a tail light bulb (running light) draws about 0.4 amp (5 Watts).

Refer to the line drawing on the back of this sheet to identify the components from the numbers in the text.

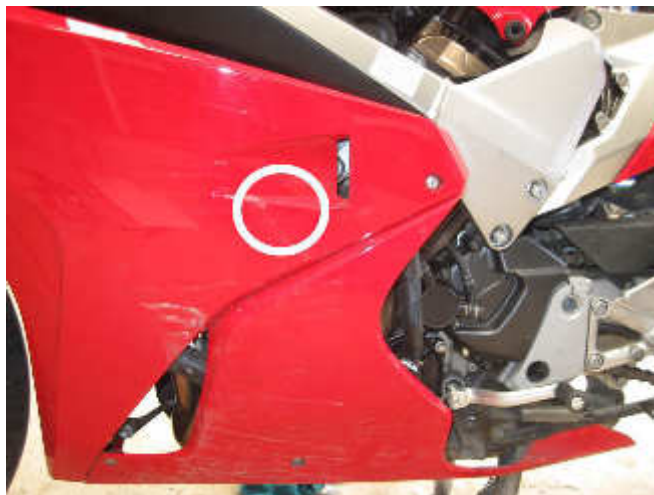
The **Computer (1)** mounts under the passenger's seat. There is self-adhesive Velcro provided in the kit to mount the computer.



The **Electric Throttle Servo (2)** is mounted on the right side of the bike, under the fairing.



The **CIU (3)** is located on the left side of the bike under the fairing. A new **cable (4)** connects it to the throttle bodies.



The **Control Switch (5)** normally mounts above the handlebar on the left side, the mounting bracket is mounted to the left hand (clutch) master cylinder handlebar clamp. The bracket mounts between the lower faces of the clamp. The clamp must have about 1.0~1.5mm (0.040~0.060") filed from the lower face to allow for the thickness of the switch bracket.



The **Wiring Harness (6)** has the same type of plugs or terminals that are already used on the motorcycle. Power for the cruise control and brake sensing is taken off the brake light switches by unplugging the rear brake light switch. Matching connectors on the cruise control loom are plugged in to the switch and the bike's harness. Road speed and Tach signal (engine speed) sensing is detected from the signals to the bike's instruments. Tach signal is used to disengage the cruise if the clutch is operated. The bike's clutch switch is also connected to the cruise control to disengage the cruise control. The cruise control is grounded on the negative battery terminal.

MotorCycle Cruise Controls

**6 Kingston Street
Mount Waverley VIC 3149
AUSTRALIA**

Web Site: <http://www.mccruise.com>

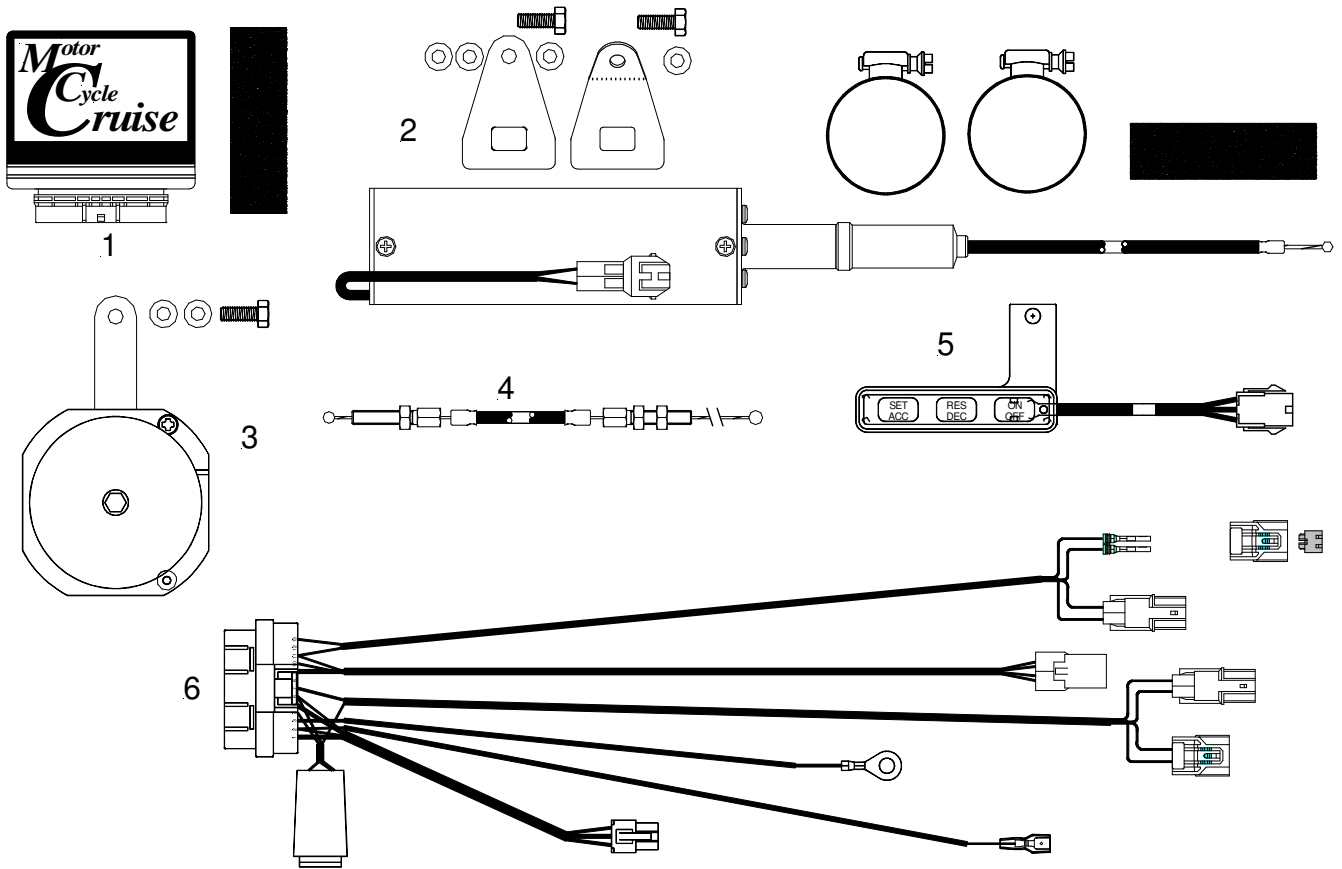
International: **Phone** (International Access Code) 61 3 9808 2804

Fax (International Access Code) 61 3 9808 2445

Australia: **Phone** (03) 9808 2804

Fax (03) 9808 2445

E-mail: sales@mccruise.com



MotorCycle Cruise Controls

6 Kingston Street
 Mount Waverley VIC 3149
 AUSTRALIA

Web Site: <http://www.mccruise.com>

International: Phone (International Access Code) 61 3 9808 2804

Fax (International Access Code) 61 3 9808 2445

Australia: Phone (03) 9808 2804

Fax (03) 9808 2445

E-mail: sales@mccruise.com