

KUBOTA RTV-X1140

Parts list for MCS 2640a-X1140

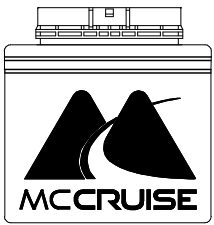
<u>Item</u>	<u>Qty</u>	<u>Part Number</u>	<u>Description</u>
1	1	MCS 8000C	Computer
2	2 lengths		Velcro mounting tape (2 x 7cm pieces)
		<u>MCS 2643-850HD</u>	<u>Electric Throttle Servo assembly</u>
3	1	MCS 850HD	Electric throttle servo
4	1	MCS 850HDC	Servo nose
5	3		M5 x 12 pan head screws
6	1		3/4" x 3/32" (19 x 3mm) 'O' ring
7	1	MCS 850B	Cable sealing boot
8	1	MCS 2642A-850HD	Servo mounting bracket
9	2	HoseClamp24	27~51mm hose clamps (servo mount)
10	2	HoseClamp32	40~64mm hose clamps (servo bracket mount)
11	1	MCS 2648-850HD	Throttle servo cable assembly
12	3	MCS 054	Wire ring cable retainer (1 spare)
13	1	MCSU425 M6C	Slotted cable adjuster
14	2		6mm flat washers
15	2		M6 lock (thin) nuts
16	1	MCS 426A	Grub Screw Cable Nipple
17	2		M4 x 4 socket set screws (grub screws)
18	2	BLP 250	Boot Lace Pins (1 spare)
	2		2mm hex keys
		<u>MCS 2645</u>	<u>Throttle Lever Assembly</u>
19	1	MCS 2645A	Throttle Lever
20	1	MCS 2645D	Throttle Lever Clamp/Spacer Plate
21	1	MCS 2645C	Throttle Lever Clamp Plate
22	3		M5 x 16 pan head screws
23	3		M5 x 30 bolts
24	12		5mm flat washers
25	6		M5 plain nuts
26	3		M5 Nyloc nuts
27	1	MCS 2646B	Flexible Cable bracket (servo cable bracket)
28		<u>MCS 2644-835F</u>	<u>Control Switch assembly with OPTIONAL spray switch</u>
	1	MCS 822-160	Control Switch
	4		4 gauge x 1/2" pan head self-tap screws
	1	MCS 2644A-835F	Switch bracket with spray switch
	1	MCS 823-160	Spray switch
		<u>MCS 2644-836F</u>	<u>Control Switch assembly without spray switch</u>
29		<u>MCS 822-160</u>	<u>Control Switch</u>
	4		4 gauge x 1/2" pan head self-tap screws
	1	MCS 2644A-836F	Switch bracket without spray switch
30	2		M4 x 12 pan head screws
31	2		4mm flat washers
32	2		M4 Nyloc nuts
33	2		8g x 3/8 pan head self-tap screws

34	1	<u>MCS 2641-X1140</u>	<u>Wiring harness</u>
a			Computer plug (26 pin)
b			Cruise Control Power Fuse (5 amp)
c			Brake switch connectors (orange and grey wires)
d			Throttle servo connector (4 way)
e			Neutral sensor plug (blue & black wires)
e1			Neutral sensor connectors (blue & black wires)
e2			Neutral sensor plug
f			Ground connector (black wire)
g			Connectors for optional Spray power harness (pink & blue wires)
h			Speed sensor connectors (blue/black wires)
i			Power connector (red wire)
j			Control switch plugs (6 way)
k			Spray switch plug (3 way plug for optional Spray switch)

OPTIONAL

35	1	<u>MCS 2641SPH</u>	<u>MCS 2640SPK Spray Power Kit</u>
a			Spray Power Harness
b			Spray/Accessory power relay
c			Ground terminal (black wire)
d			Spray/Accessory power wires (yellow and black wires)
e			Control wires (pink & blue wires) – connect to ‘h’ above
f			Power fuse (10 amp)
			Power terminal (red wire)
36	1	JD045M	Spray power outlet plug – connect to ‘c’ above
37	3	H2832	Terminals for above (1 spare)
38	2		8g x 3/8 self-tapping screws (to mount outlet plug)
39	1	JD 046	Spray Power Plug – connect to spray/accessory power wires
40	3	H 3555	Terminals for above (1 spare)
	1		8g x 3/8 self-tapping screws (to mount relay)
	1		M5 x 12 pan head screw (to mount relay)
	2		5mm flat washer (to mount relay)
	1		M5 Nyloc nut (to mount relay)
	10cm	HST3	3mm heat shrink tube (speed sensor connection)
	1 bottle		Throttle cable oil
	10		150mm cable ties
	10		200mm cable ties
	10		300mm cable ties

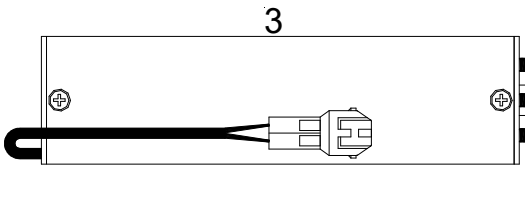
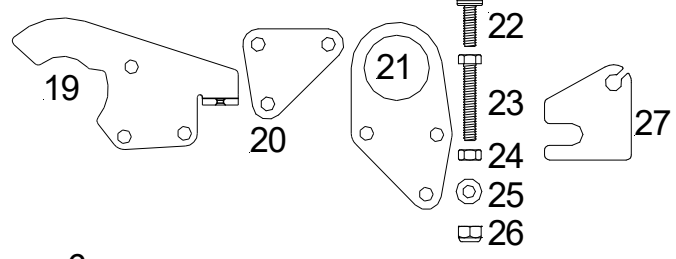
Information, Set up and Operation Manual
Operation and User Manual
Installation Manual
Trouble shooting guide



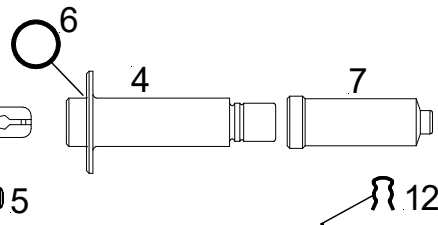
1



2



3

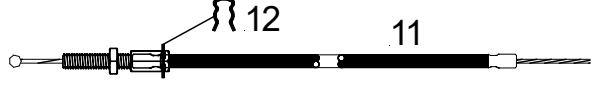


6

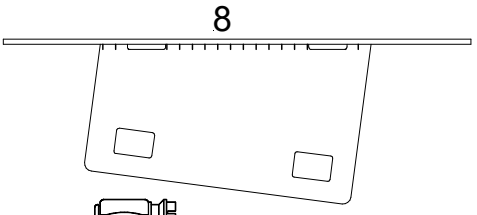
4

7

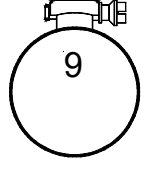
5



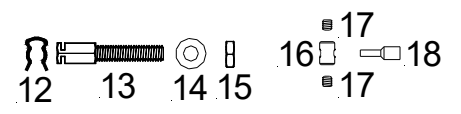
11



8



9



17

12

13

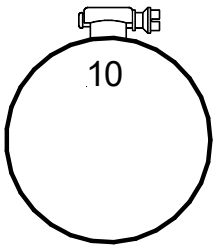
14

15

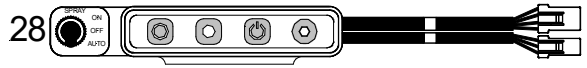
16

17

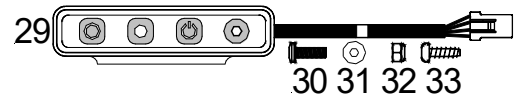
18



10



28



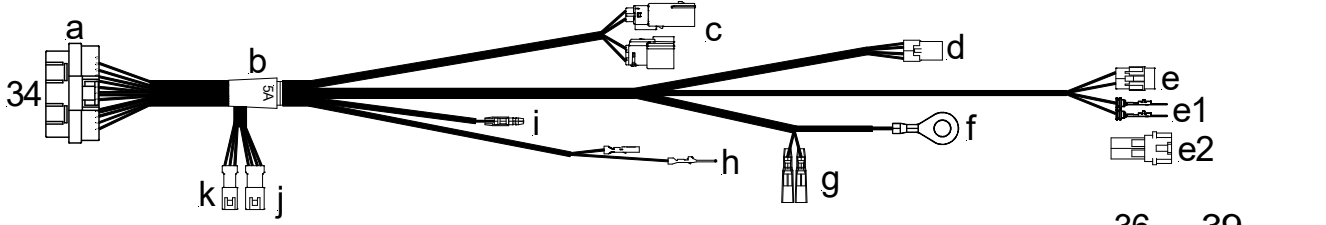
29

30

31

32

33



34

a

b

k

j

k

j

c

d

e

e1

e2

g

g

f

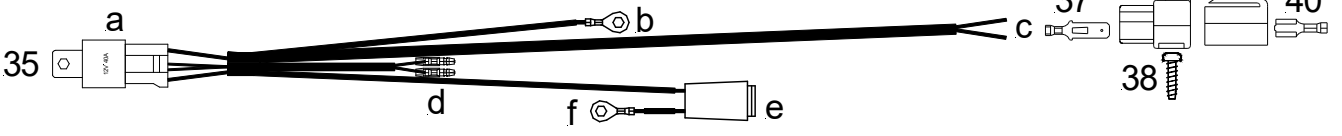
f

h

h

i

i



35

a

b

37

36

39

40

d

f

38