

MAKING and STUFFING A FOUR PART HEAD

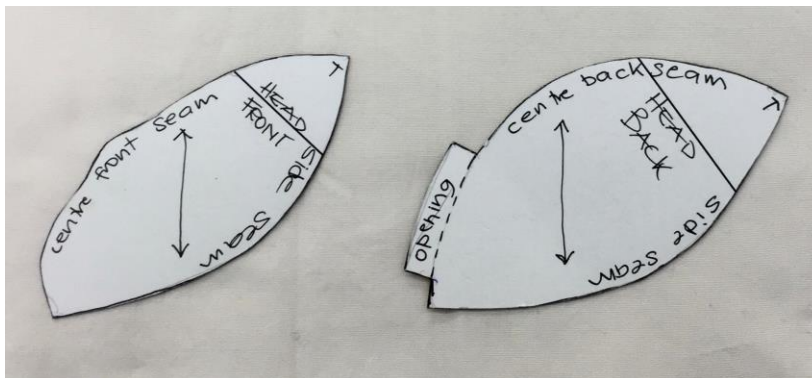
By JAN HORROX copyright Sept 2018

For your personal use – please do not copy.

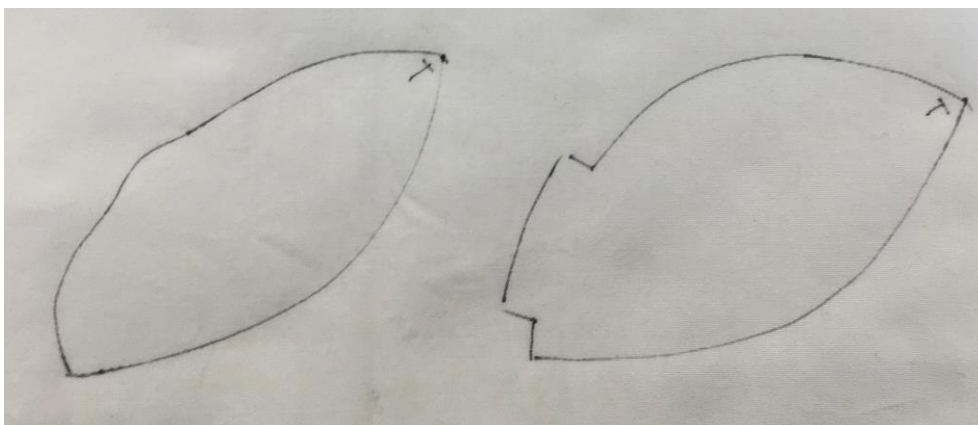
This head is made using a pattern which I use for my workshops for beginners. The head pattern is very similar to those in my books for a sculpted head. These instructions are for making and stuffing the head in preparation for sculpting. Sculpting instructions are in a following section.

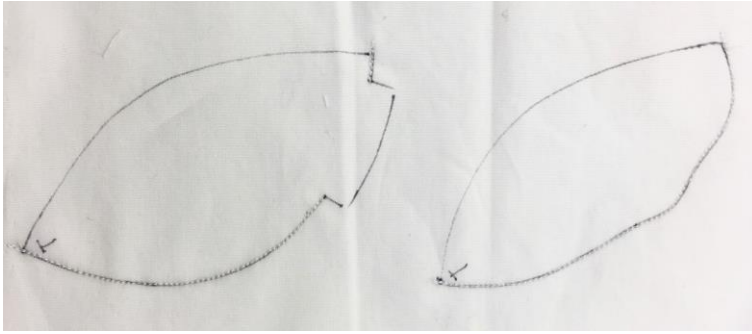
I am using Pimatex cotton but a good quality light weight fabric will suit. All the lines of the pattern pieces are the stitching lines. These are the lines you will be drawing onto the fabric.

1. There are two pattern pieces, front and back of the head. The grain arrow should be level with the selvedge of the fabric. Lay out double fabric with the selvedge at the side. Selvedge is vertical on the RHS of the picture.
2. Place the pattern pieces with enough space for seam allowances.

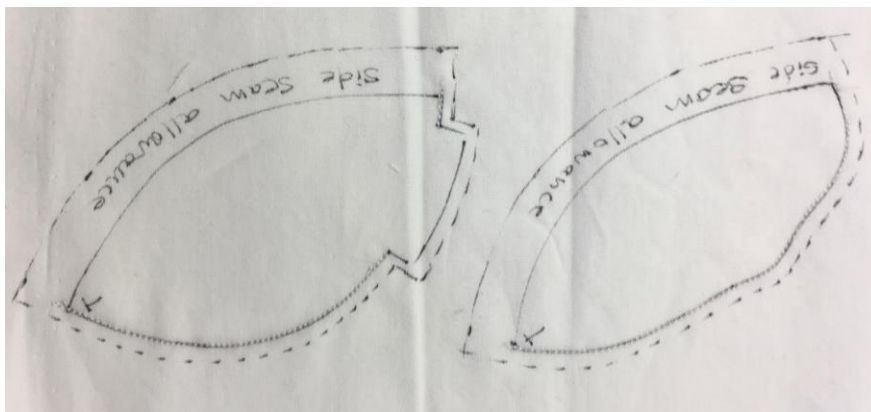


3. Draw around the pieces. Everything is written on the pattern pieces to describe the head pieces. I am using a fine Frixion pen to outline the pieces. This shows clearly and is removed with heat when no longer wanted, before turning through. Mark the 'T' for top of head on both pieces.

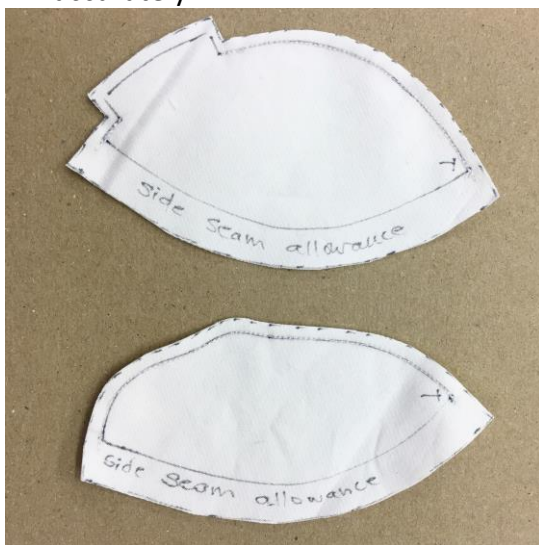




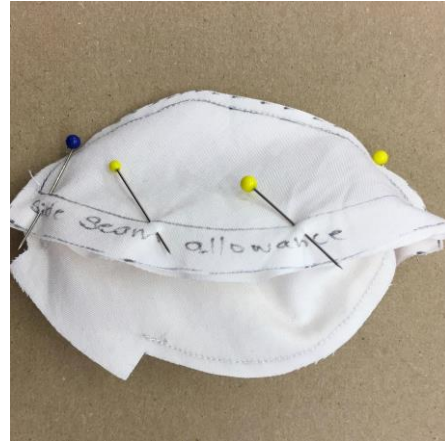
4. Stitch the Centre front seam on the head FRONT piece and the centre back seam on the head BACK piece – leaving the opening in the back for later stuffing.



5. Using the Frixion pen (or a fine pencil) draw in the seam allowances of
Side seams - 1cm
Centre front and centre back (stitched seams) - 3mm
6. Cut out both pieces on these lines. Please draw the allowances and cut out VERY accurately.



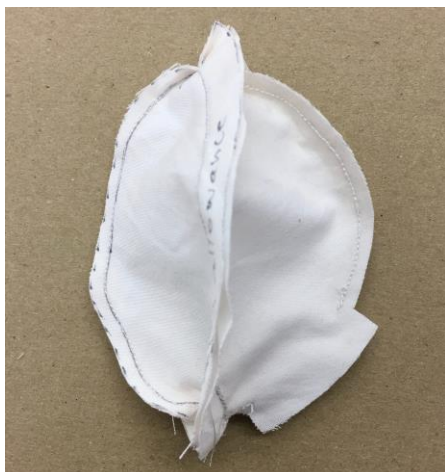
7. Flip these 2 pieces over and replace the pattern templates matching to the stitching lines. Draw the stitching lines for the side seams on these 2 pieces then you will have the stitching line for the side seams marked all around the 4 pieces.
8. Pin together the side seams matching all your drawn stitching lines.



Use an open foot on the machine for all machining of doll parts.



9. Machine around the whole side seam of the head making sure you do not catch any tucks into the stitching from the top and bottom seams particularly.
10. Trim the side seam to a 3mm allowance.



11. Using forceps pull the head through to the right side.
12. Take a 12mm white cotton pompom and the forceps.



13. Insert the pom-pom into the nose shape on the profile of the front of the face and pin in place. Make sure to get this full into the nose 'blip'
14. Now stuff your head with a good polyester stuffing and using forceps or a chop stick to position the stuffing to make a good face and head shape. This will take far more stuffing than you expect but carry on until it is firmly stuffed and will feel somewhat like a tennis ball. You should have no puckering at the seams. This can be eliminated by how you place the stuffing.

My finished head using this pattern weighs 30gms when finished.

