

Weigh Scale

Weigh Scale with double spreader bar

Primary application

Home care
Nursing homes
Hospital

The weigh scale is an M weight (medically approved weight). The weigh scale is designed to weigh disabled patients' body weight when they are placed in a sling.

It is a highly flexible portable solution, which can be fitted to practically any manufacturer's lift equipped with a standard two-point spreader bar. In addition, the easy-to-use mounting strap and bracket is width adjustable to accommodate for different sizes of spreader bar.

The weigh scale has a big screen and multiple functions including On/Off/Zero/Tare button and Hold button. Weighing capability is up to 300 kg but the LOWEST weight capacity decides the maximum lifting capacity. The scale has an accuracy of 0,1kg.

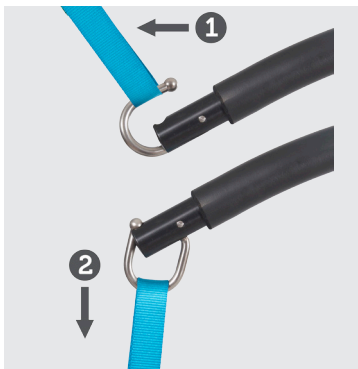
With the function Hold it is possible to sample 5 to 10 sets of reading and analyze the discrepancy.

The Tare function makes it possible to subtract additional weight like clothing from the total weight.

Key standard functions

On/Off/Zero/Tare button
Hold button
Big display
Weighing capability up to 300 kg
Accuracy of 0,1kg





Sling attachment: a minimum of downward pressure locks the sling hook; pull upwards to unlock sling hook.



System mounted on the Luna ceiling hoist.



On/Off/Zero/Tare and Hold buttons

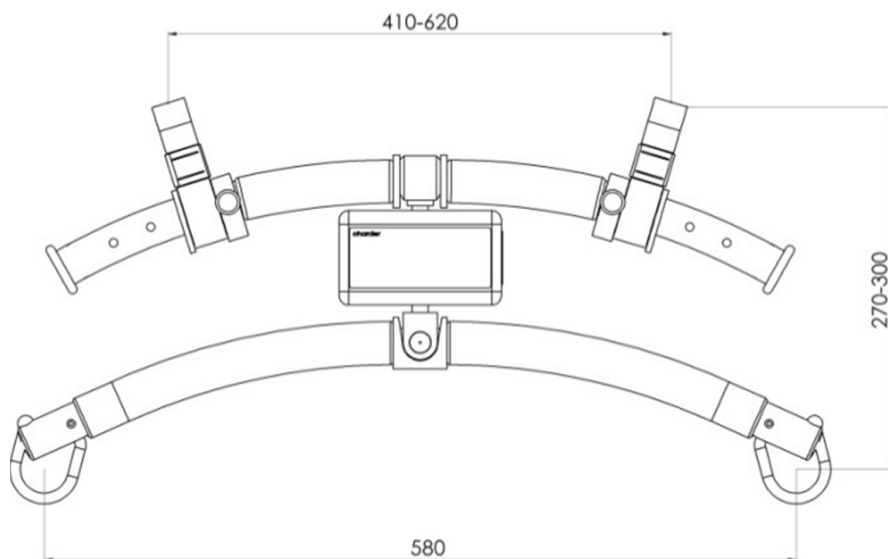


Easy to use and read. Big display.

Version	Item-number
Weigh scale with double spreader bar	017-00113

TECHNICAL SPECIFICATION

Height	300 mm
Length	580 mm
Width	51 mm
Weighing unit	MDD class 1
Accuracy	0,1 kg
Weigh capacity	300 kg



Consult the Technical manual for further specifications. All figures and measurements are for guidance only and may differ in actual situations. Ergolet reserves the right to changes without notice.

Product photos may include accessories. Consult your dealer.

CE MDD93/42/EEC
Class I

date 25.09.2014 - ver. 6

Ergolet
Taarnborgvej 12C
4220 Korsoer
Denmark
tel. +45 70 27 37 20
e-mail: ergolet@ergolet.dk

www.ergolet.com

