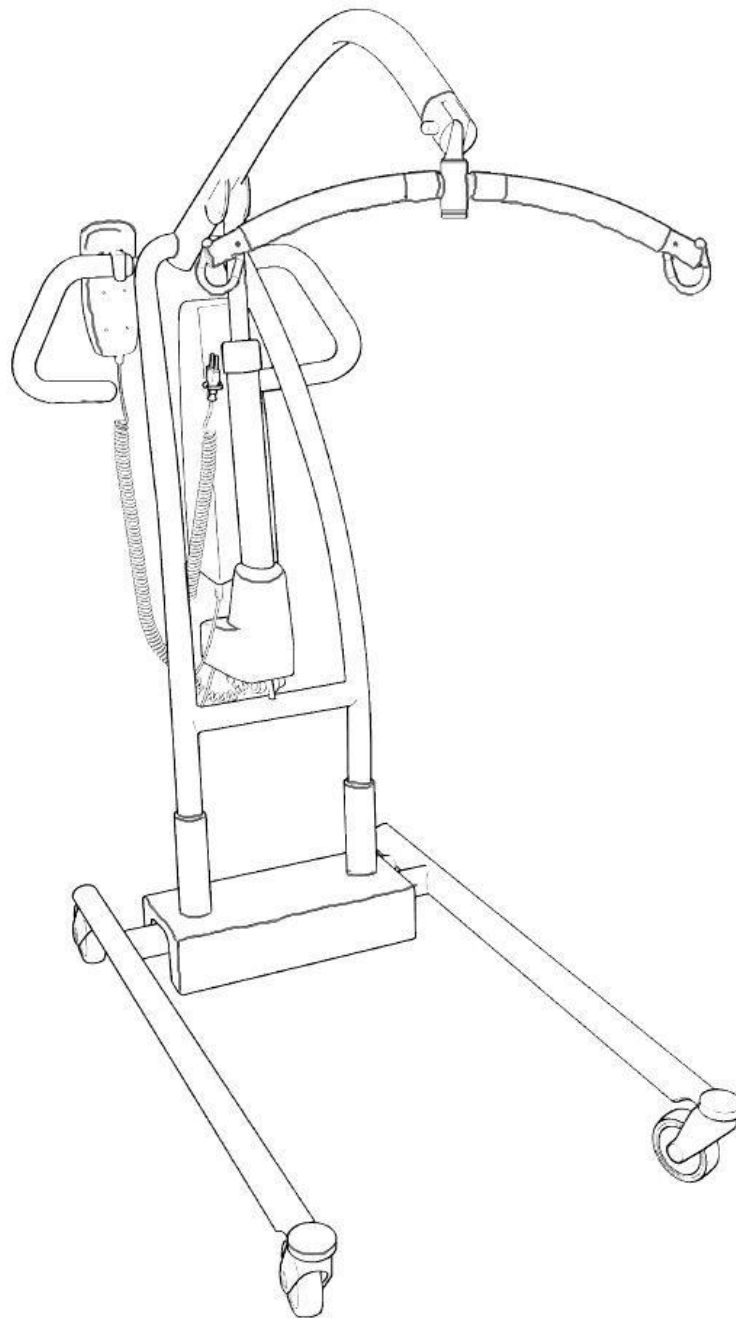


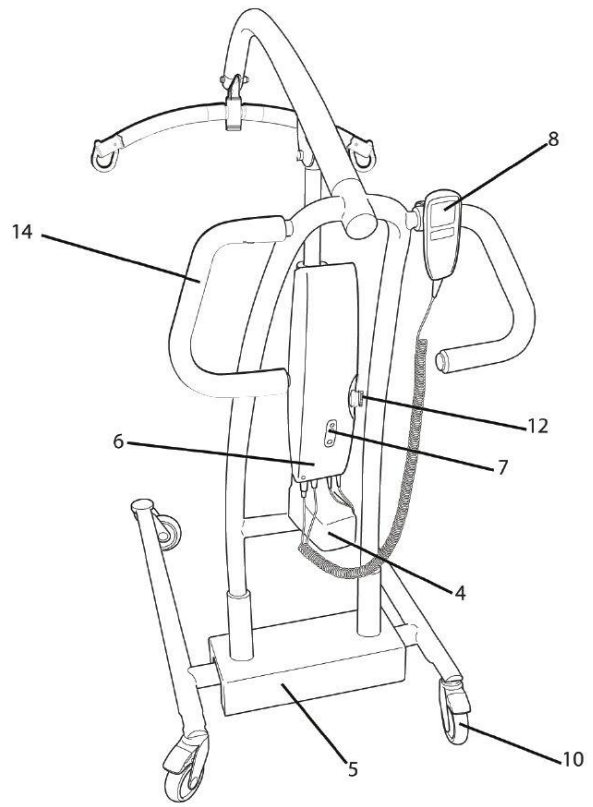
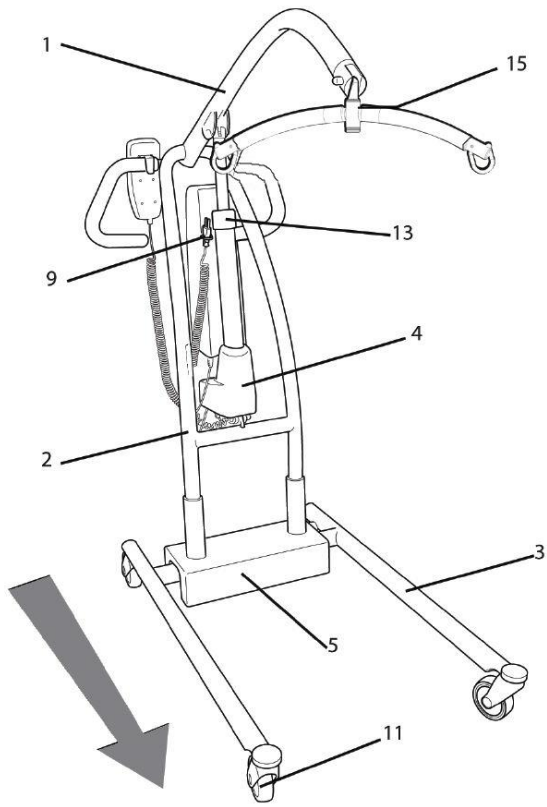
Mira/180

Mobile lift

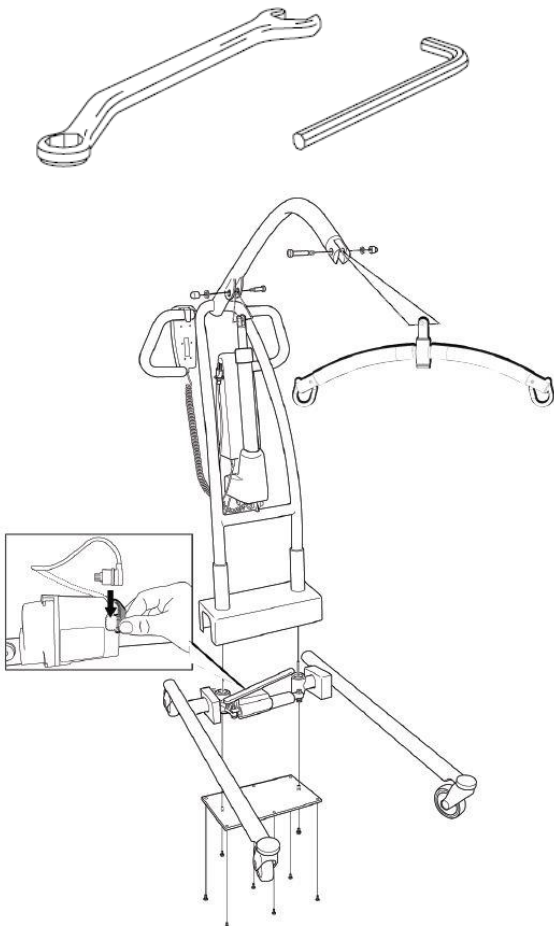
User manual



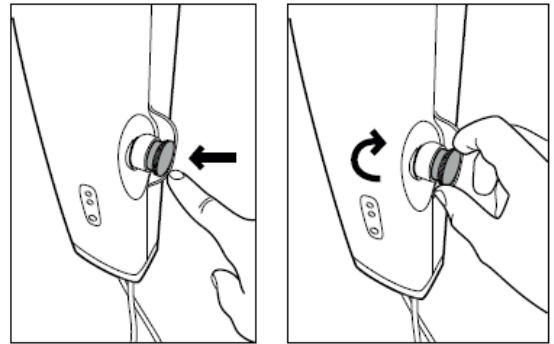
A



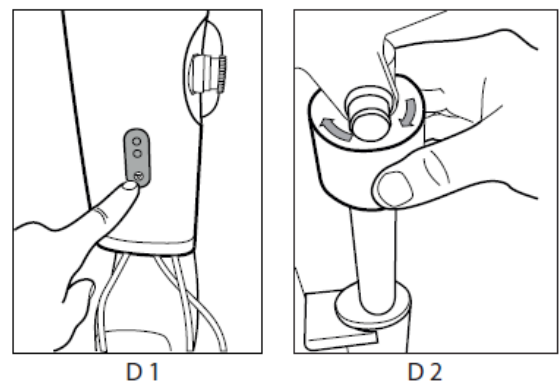
B



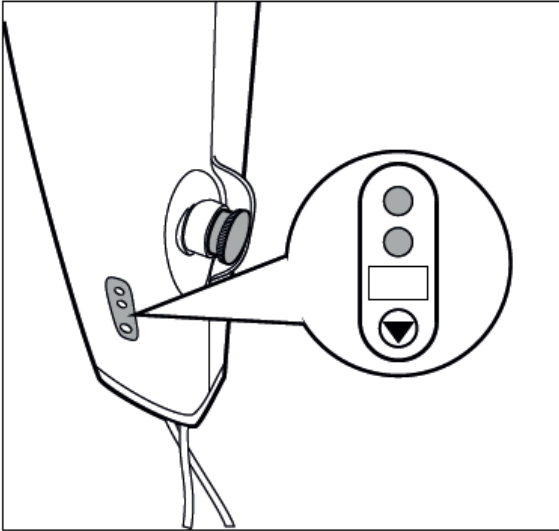
C



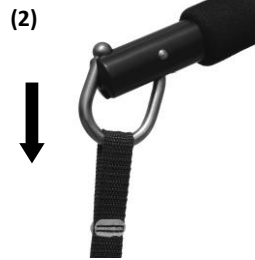
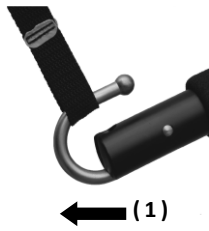
D



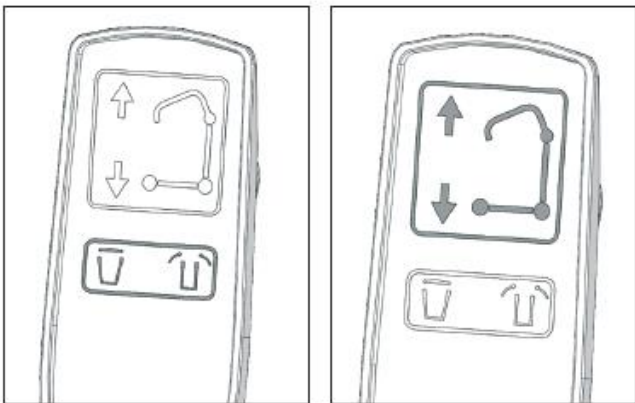
E



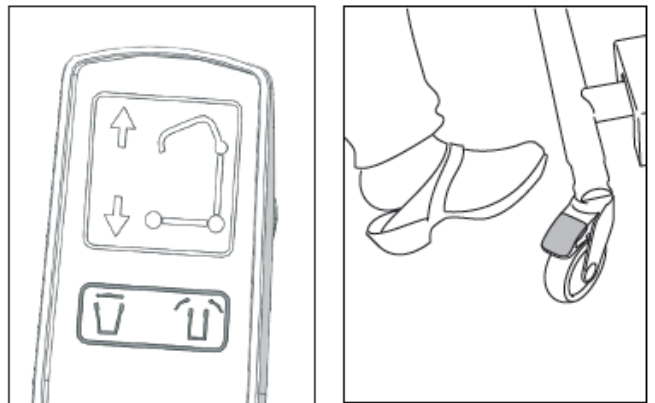
F



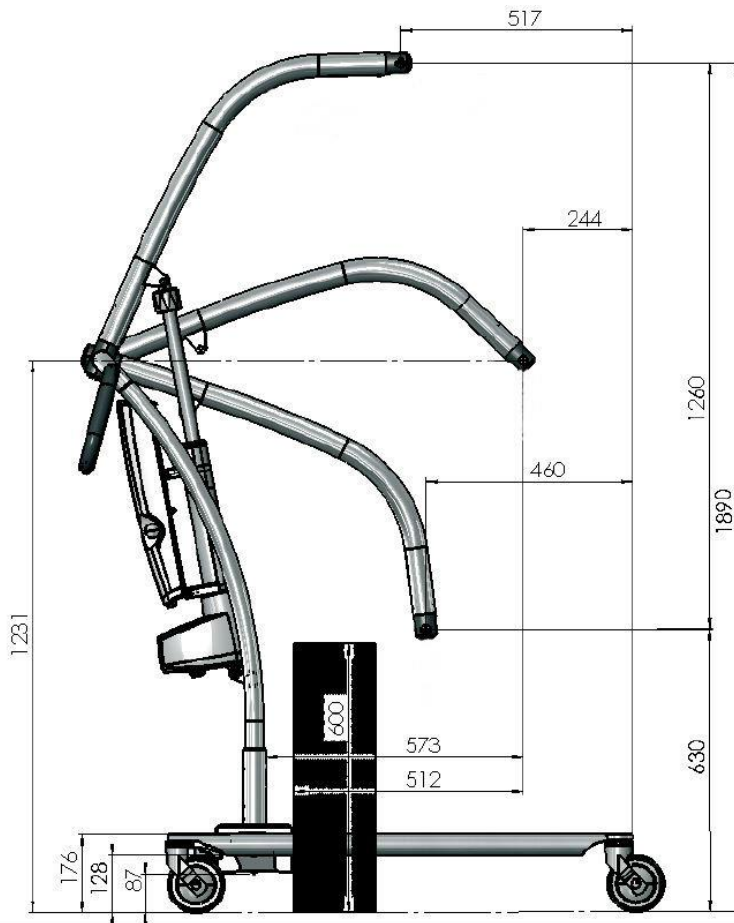
G



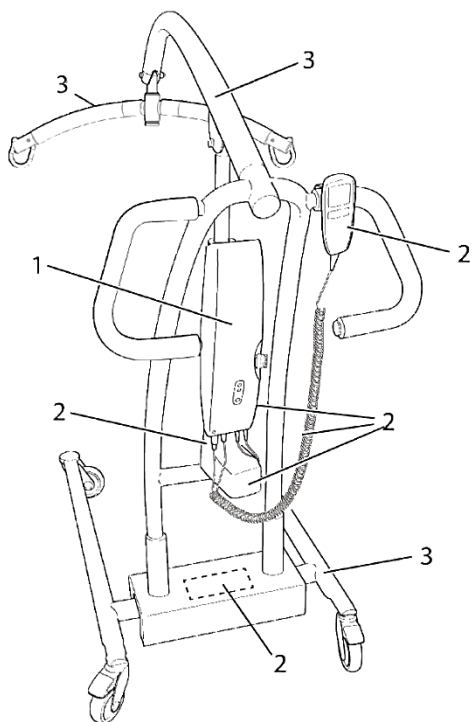
H



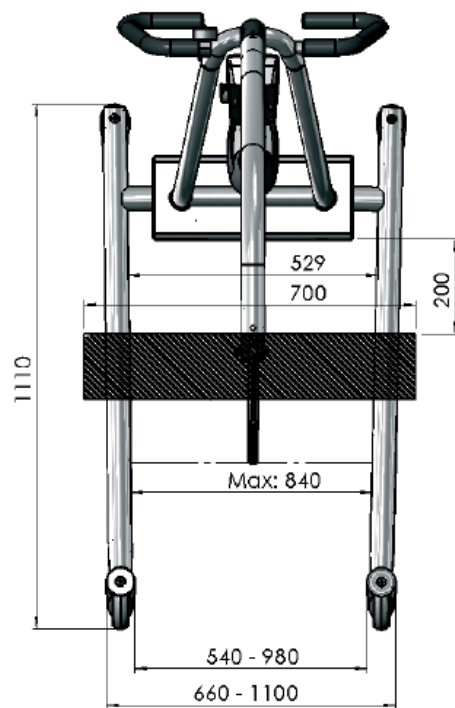
I



J



K



Contents

EN

General information	4
Safety instructions	4
Description	4
Assembly	5
Emergency stop/Emergency lowering/Charging	5
Use/Safety/Operation	6-7
Maintenance/Service/Warranty	7
Troubleshooting chart	8
Technical information	9
Recycling instructions	10
Accessories/Spare parts	10
Stockage/Transport	10
Notes	11

General information

EN Thank you for choosing a mobile lift.

In order to avoid injury during handling and use, please read through the lift and sling manuals.

In this manual, the user is the person being lifted. The assistant is the person operating the mobile lift.

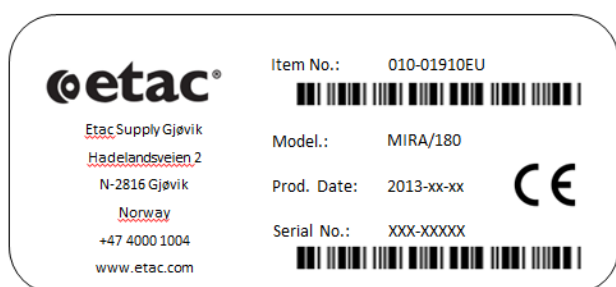


This symbol appears in the manual together with text. It indicates points where the safety of the mobile lift, the user or the assistant may be at risk.

The mobile lift is tested by a testing institute and complies with the requirements of the Medical Devices Directive for Class 1 products (MDD 93/42/EEC). The mobile lift complies with the requirements according to EN 60601-1, EN 60601-1-2, ISO 10535.

Etac continuously makes improvements to our products. We therefore reserve the right to make changes to our products without prior notice. The dimensions shown in the drawings or other material are for guidance only.

We cannot be held responsible for any printing errors or omissions.



CE mark



Type B according to EN 60601-1



Read instructions before use



Recycling according to local regulations

Safety instructions

EN

- The mobile lift may only be used for lifting persons.
- The mobile lift may only be used by personnel who have been instructed in how to use the lift correctly.

- The mobile lift must not be used as a means of transportation.
- The mobile lift may not be loaded with more than 180 kg/ 395 lbs.

Description

EN

Description

fig. A

The mobile lift is intended for lifting people, with at least one of the assistants having been instructed in use of the lift, or when there is a supervisor present.

The mobile lift is intended for use in normal care environments. Never use the mobile lift to lift anything other than what has been approved by the manufacturer.

The mobile lift is primarily intended for the following situations:

- Lifting to and from beds, chairs, wheelchairs, toilets, bath chairs and mobile shower chairs/mobile toilet chairs or similar objects.

- | | | |
|---------------------------------------|----------------------------------|--------------------------|
| 1. Lifting arm | 6. Electrical box/Battery module | 11. Wheel without brakes |
| 2. Mast | 7. Emergency lowering | 12. Emergency stop |
| 3. Base | 8. Hand control | 13. Emergency lowering |
| 4. Actuator | 9. Power cord | 14. Handle |
| 5. Motor for adjustable leg spreading | 10. Wheel with brakes | 15. Spreader bar |

Assembly

EN Assembly → fig. B

Before assembly, check that the following parts have been supplied:

– **Mast**

Battery module, motor, electrical box, hand control

– **Base with motor for base width adjustment**

– **Spreader bar attachment**

– **Spreader bar**

– **Power cord**

– **Tools**

A 13 mm spanner and a 5 mm Allen key are needed for assembly but are not included.

Emergency stop/Emergency lowering/Charging

EN Emergency stop → fig. C

Movement of the lift stops immediately when the red emergency button on the electrical box is pressed.

The lift must not be used if the emergency stop function is not working.

To release the emergency stop button after use, twist it a quarter turn as indicated by the arrows on the button. The motor can then be used again.

The emergency stop function must be checked regularly. Operate the lift without a load and press the emergency stop button – the lift should stop immediately.



The emergency stop button must not be used as a start/stop button. When the lift is in use, the button must always be in the out position.

EN Emergency lowering → fig. D

If the lift stops working while in use (for example, if the hand control develops a fault), the user can always be lowered without any risk using the emergency lowering function.

The lift exerts no downward force during emergency lowering other than the weight of the user and the lifting arm.

This reduces the risk of crushing injuries.

There are two ways of doing this:

1. On the electrical box (below the emergency stop button) there is a hole next to an arrow button. Insert the tip of a pencil or other similar object (not too sharp) into the hole. This will activate emergency lowering (fig. D 1).
2. The mobile lift has a mechanical emergency lowering function. If you pull the ring upwards, the lifting arm moves downwards when loaded (fig. D 2).

EN Battery – Charging/replacement → fig. E

The battery must be charged regularly. We recommend charging every night. The emergency stop button must not be depressed during charging.

The battery has no "memory" and its lifetime can be significantly shortened if it is allowed to discharge completely before its next charge. Connect the power cord to a wall socket.



The mobile lift must not be used during charging.

The battery must not be charged in a damp environment, e.g. a bathroom.

There are two LEDs (indicator lights) on the electrical box.

– The light on the left is green and indicates that the power cord is connected (fig. E).

– The light on the right is yellow and indicates that charging is in progress. If the light does not come on during charging despite the plug being in the wall socket, a qualified technician must be contacted (fig. E).

If the mobile lift does not function as expected, even though the battery is fully charged, this may be due to the battery's lifetime having been exceeded. If this is the case, the battery should be replaced. Ergolet can supply a new battery.

Use/Safety/Operation

EN Prior to use

The assistant is responsible for performing a visual check of the lift prior to use. If any problems are discovered, the lift must not be used until it has been repaired by a qualified technician. Damaged lifting slings must never be used.

Before use, always check that:

- The lift has been assembled in accordance with the assembly instructions and that all parts are in place.
- All couplings and connections to the electrical box, frame and lifting arm are intact.
- The actuator and electrical box are not making any abnormal noises.
- The lift shows no signs of damage.
- The spreader bar is securely attached to the lift.
- The battery is fully charged.

Before lifting, always check that:

- The lifting accessory is appropriate for the user's needs. This applies to type, size, material and configuration.
- The lifting accessories are free from damage.
- The lifting accessories are correctly and securely attached to the user so that no bodily harm can occur.
- The lifting accessory is correctly attached to the lifting equipment.
- The sling loops are correctly fitted to the spreader bar hooks when they are extended. This should be checked before the user is lifted.
- The catch which prevents accidental unhooking is still in place and in working condition.

EN Hanging slings on the spreader bar fig. F

The design of the lifting hooks on the spreader bar is that the weight of the patient/user helps to close the hook.



Risk of finger entrapment - ensure that user's fingers cannot get trapped.

(1) The sling strap is placed over the hook in its open position. (fig. F)

(2) The strap is pulled downwards so that the hook closes. (fig. F)

To release the strap after lifting simply pull upwards to open the hook.

EN Lift fig. G

- Extend the width of the base prior to lifting using the button for base width adjustment on the hand control.
- Raise and lower the lift by pressing the buttons gently.



Never lift the user higher than is necessary.

NEVER USE THE BRAKES when the user is being lowered.

- The assistant holds the hand control and stands close to the user. This creates a sense of security.
- Work efficiently! For example, move the wheelchair to the mobile lift, not vice versa. Avoid long transfers during which the user is suspended in the sling.

The mobile lift is not a means of transportation.

EN Operating the mobile lift

- We recommend that the mobile lift be used only for short transfers on level surfaces.
- The mobile lift should be pulled when moved. This makes movement as smooth as possible for the user, while at the same time, the assistant is subjected to the least possible strain. Therefore only push the lift when it is to be positioned over the bed.
- When the lift is to be turned, the assistant stands alongside the lift and allows it to turn "around its own axis". The assistant holds onto one of the lift handles with one hand and, with the other hand, gently pushes on the sling (closest to the spreader bar).

- When moving the lift, it is recommended that the assistant uses his or her entire body rather than twisting the upper body or shoulders. The assistant must always ensure that lift movement is stable and that there is no risk of the lift tipping over. Never use just the handles to force the lift to turn. This can easily cause the user to sway.
- Push or pull the lift smoothly and carefully. Rapid movements are not only unpleasant for the user but in the event of a sudden stop could also constitute a safety hazard.
- Never attempt to lift the mobile lift. This can result in a risk of injury to both assistant and user.
- The brakes are primarily used for parking.

Use/Safety/Operation

EN Parking the mobile lift → fig. H

- Reset the wheel base to the parallel position using the button for base width adjustment on the hand control.
- Apply the brakes.



Never use the brakes when the user is being lowered.
Never lift the user higher than is necessary.
The mobile lift is not a means of transportation.

Maintenance/Service/Warranty

EN Cleaning

The actuator and the electrical box should be cleaned using a lightly dampened cloth, due to the risk of moisture damaging the electronic components. The metal parts and handles can be cleaned using detergent or disinfectant.



After each cleaning session, the emergency stop and emergency lowering functions must be checked!

The lift must not be exposed to running water!

EN Service

If something on your lift is not working, please contact a qualified technician.

A defective lift must not be used.

For reconditioning or replacement of parts, or original parts or components of an equivalent quality should be used. These are specified in a spare parts list.

If other parts are used, Ergolet / Etac bears no responsibility for function or safety.

Annual service

- To stipulates that the lift must be inspected once a year, in accordance with the service instructions for mobile lifts. This inspection must be performed by qualified personnel. An annual inspection of this kind is also stipulated in the standard ISO 10535.

- The owner is responsible for ensuring that an inspection is performed. Ergolet recommend that the owner take out a service agreement.
- If a service agreement has been taken out, the technician is responsible for ensuring that the inspection is performed correctly, and that an inspection report is created for the inspected lift.
- If the inspecting technician finds anything seriously wrong with the lift, he is obliged to ensure that the lift is taken out of service if the defect represents a safety risk.
- Service, repairs and other additional work on the lift between inspections must be noted in the inspection report.

EN Warranty – Service life

Expected service life at normal use: approx. 10 years.

Troubleshooting chart

EN Troubleshooting chart

Symptom	Possible cause	Troubleshooting	Corrective action
The lift does not function.	No power	Emergency stop button depressed.	Turn the emergency stop a quarter turn so that it springs out (fig. C)
		Battery discharged or defective.	Charge or replace battery module.
	Contact fault	Check all contacts (motor, hand control).	Insert the electric sockets properly (fig. B)
		Power cord connected to power outlet.	Remove the power cord from the power outlet.
Intermittent fault: The lift only goes up or down (not in both directions) or the base width can only be adjusted in one direction (together or apart).	Contact fault	Hand control fault.	Replace the hand control.
		Fault in electrical box.	Replaced the electrical box.
	Inadequate power supply or fault in electrical box.	Battery discharged or defective.	Charge or replace the battery.
		Loose connection in hand control.	Replace the hand control.
Base width adjustment does not function.	Contact fault	Check the electric sockets between the base and the mast.	Push the contacts together (fig. B).
Lift or base width movement is slow.	Inadequate power supply	Battery discharged or defective.	Charge or replace the battery.
The light on the hand control is on.		Power cord or electrical box is defective.	Replace the power cord or electrical box.
The lift is making abnormal noises	Motor fault or resistance at the motor's attachment points.	The motor cannot move freely in its attachment points.	Loosen and check/adjust the tightness of the motor's attachment points or contact Ergolet.

Technical information

EN Technical information

Mobile lift

Dimensions	fig. I and K (*with 75 mm wheel, -30 mm)
Max load	180 kg (395 lbs)
Total lifts with 80 kg (175 lbs)	about 80 (battery capacity)
Sound volume	53dBA
Applied force hand control buttons	max 5 N

Base

Turning radius	approx. 119 cm (46,8")
Total weight	47 kg (103 1/2lbs)
Weight, base	13 kg (28 1/2lbs)
Weight, complete mast	34 kg (75lbs)

Material

Chassis: Powder-coated steel

Electrical data

Intermittent operation	10 %, max 2 min (18 min)
Operating voltage	24V DC
Power supply	Battery power
Power consumption	8 A

Safety class

Actuator	IPX4
Electrical box	IPX4
Hand control	IPX4
Battery	IPX4

Recycling instructions


 Recycling instructions


This product may contain substances that can harm the environment if not recycled according to national directives.

1. Lead acid battery
2. Waste from electrical/electronic equipment
3. Mixed metals

Accessories/Spare parts

 For accessories and spare parts, please contact Ergolet

Accessories/Spare parts

 If the lift is to be stored for a prolonged period we recommend storing it indoors with normal humidity (20-90 %) and that trickle charge is carried out.

Notes

EN



Elite Healthcare Ltd
F1 Swords Enterprise Park
Feltrim Road
Swords
County Dublin
Tel: 01 8903932
Fax: 01 8903937
e-mail:
info@elitehealthcare.ie

