



# Mobile Flex

Height & width adjustable gantries

## Primary application

Home care  
Institutional  
Hospital

Suitable for people who need an immediate and/or temporary hoisting solution that can be easily and simply fitted, used and removed. The gantry is easy to assemble, and no tools are required to adjust height and width in order to provide reliable temporary solution.

Adjusting the height is made in a few seconds providing immediate use for the carer and client. The telescopic tracks give enough lifting height to provide solutions that are suitable for most care rooms and most transfer situations.

The mobile gantry combined with Ergolet's innovative Luna overhead lift, is a simple and functional lifting system and the ideal choice for either home care or institutional use.

The mobile gantry provides a lifting capacity up to 275kg thus utilizing the full range of the Luna lifting unit.

## Key standard functions

- Weight capacity of 275kg
- Two different lengths
- Height and width adjustable
- Mounted on wheeled base
- Easy assembly and adjustments
- Utilizes full functionality of the Luna overhead lift
- Only 1150 mm in depth

## Accessories

- Cart with pivot joint



Easy to adjust width without using tools



Two sets of wheels with brakes. Simply step on the pedal to activate the brake.



Luna ceiling hoist mounted on the Mobile Flex



Easy to assemble and disassemble for transport



Easy height adjustment (gas spring mechanism). A simple user manual placed above the handle.

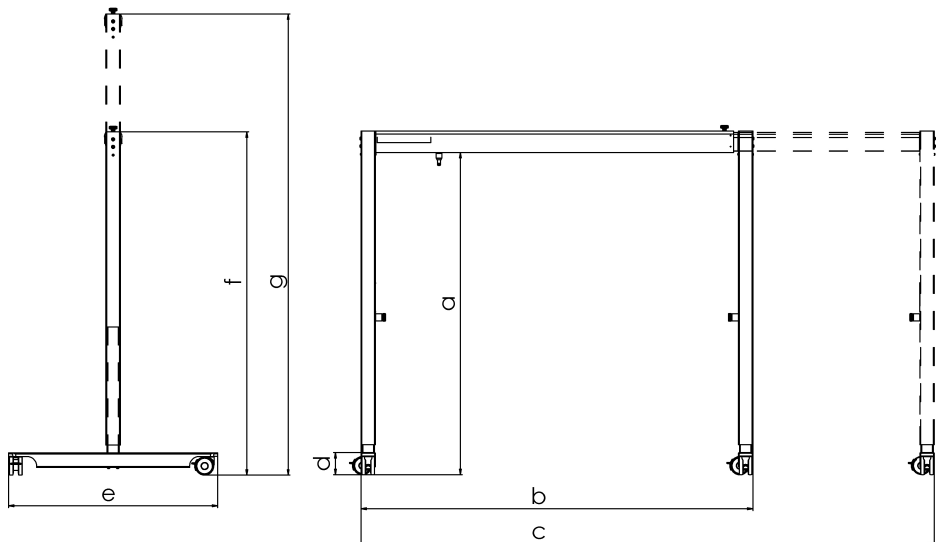
## PRODUCT HIGHLIGHTS

- Practical design and simple functionality
- Full width adjustability to maximise room coverage
- Easy assembly
- Quick height and width adjustment
- Easy to clean

| Version                             | Item-number |
|-------------------------------------|-------------|
| Mobile Flex / 3000                  | 016-01147   |
| Mobile Flex / 4000                  | 016-01148   |
| Accessories                         |             |
| Cart / telescope track/ pivot joint | 016-020201  |

## TECHNICAL SPECIFICATION

|           | Mobile Flex / 3000 | Mobile Flex / 4000 |
|-----------|--------------------|--------------------|
| Max. load | 275 kg             | 275 kg             |
| a         | 1773,5 mm          | 1773,5 mm          |
| b         | 2160 mm            | 3160 mm            |
| c         | 3160 mm            | 4160 mm            |
| d         | 122 mm             | 122 mm             |
| e         | 1150 mm            | 1150 mm            |
| f         | 1891 mm            | 1891 mm            |
| g         | 2541 mm            | 2541 mm            |



Consult the Technical manual for further specifications. All figures and measurements are for guidance only and may differ in actual situations. Ergolet reserves the right to changes without notice.

Product photos may include accessories. Consult your dealer.



date 14.01.2013 - ver. 1

Elite Healthcare Ltd.  
Phone: +353 (0) 1 8903932  
Fax: +353 (0) 1 8903937

Web: [www.elitehealthcare.ie](http://www.elitehealthcare.ie)  
Email: [info@elitehealthcare.ie](mailto:info@elitehealthcare.ie)

Dublin: F1 Swords Enterprise Park,  
Feltrim Road, Swords, Co Dublin,  
K67 E984, Ireland.

Cork: 602 Harbour Point Business  
Park, Little Island, Cork, T45 X624,  
Ireland.

