

ELECTRIC HI/LO BATHTUB COCOON



7800.00
7801.00
7802.00
7803.00

TECHNICAL NEEDS FOR INSTALLATION OF THE BATHTUB & INSTALLATION REQUIREMENTS

WATER FEEDING REQUIREMENTS(7800 & 7802):

- Maximum Static Pressure : 5 bar
- Minimum Static Pressure : 1,5 bar
- Recommended Pressure : 2 - 4 bar
- Cold Water Range : 5 - 20°C
- Hot Water Range : 55- 85°C
- Maximum Hot Water: 85°C
- Minimum Blend of the temperature of water : 5°C
- Maximum Blend of Pressure : 1,5 bar

PLUMBING : (equipment not supplied)

- **1** - PVC waste water Ø50mm, located at 250mm from the bathtub axis, and at 50mm from the ground for a good draining (tub in low position).
- **2 and 3** - Hot and cold water arrivals in copper pipe 16/18, with stop valve 1/4 threaded male 20/27 at 150mm from the ground, and at 100mm on both sides of needs axis.

ELECTRICITY : (equipment not supplied)

- **4** - Electric box "PLEXO" IP*55, located at 300mm from the ground and at 1100mm from bathtub axis or at a minimum of 600mm from the edge of the bathtub, with cable of 3x2,5² mono, protected at the head by a differential circuit breaker not supplied [characteristics K(D)], calibre 3A, sensibility 30 mA

Differential circuit breaker, calibre 6A

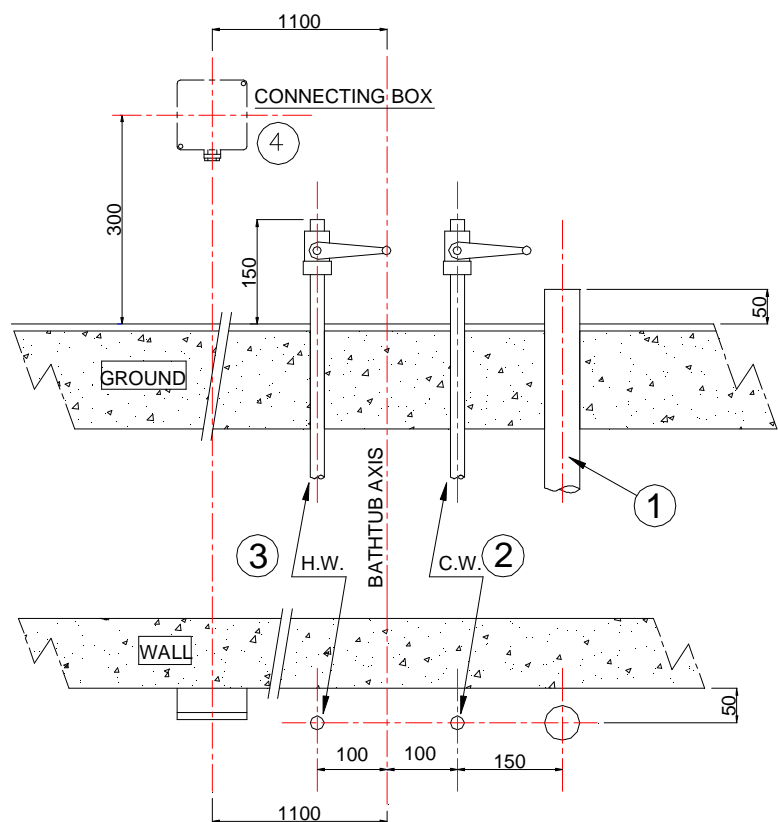
[characteristics K(D)] for whirlpool option.

The electric box must be supplied with a stuffing box (n°11) located at the low level to connect the electric cable coming from the bathtub.

Dividing transformer (in option) 230V/230V 400VA EN61558-2-4, before the circuit breaker of the tub to be fitted by customer. **Dividing transformer 1600VA for Whirlpool option.**

WATER FEEDING REQUIREMENTS(7801 & 7803):

- Maximum Static Pressure : 5 bar
- Minimum Static Pressure :1,5 bar
- Supply Pressure Differential: max 3:1(equal pres. recommended)
- Minimum Flow Rate: 25 L/min
- Cold Water Range: 1-20°C
- Hot Water Range: 50-65°C (85°C for disinfection)



IMPORTANT: ELECTRICAL NEEDS FOR INSTALLATION OF THE BATHTUB.

- 1 and 3 : Breaker 3A or 10A (whirlpool option) 30mA differential circuit.
2 : Dividing transformer, mono 230V/230V, power 400 VA or 1600VA (whirlpool opt).
4 : 3X2.5² fixed cable, 2 polarities with ground (green/yellow).

