

The 502CT by Plinth Medical is designed to aid changing procedures in schools and at home both for adults and children with various disabilities, these variable height changing tables reduce back strain for staff, helpers and parents when carrying out such procedures. The tables are available with hydraulic or electric height operation and they are fitted with fold-down side supports for patient security and have clearance beneath the frame for mobile hoist access. Available in three lengths to meet with user or establishment requirements.



Model shown: 120cm

### Benefits

- Lifetime frame & 5 year parts guarantee - see website for further details
- Choice of electric or hydraulic height operation
- Fitted with fold-down side supports with the option of upgrading to padded side supports
- Safe working load and lifting capacity of 250kgs (550lb/39 stone)
- Retractable wheel system provides easy movement and table positioning
- Low patient transfer height of 47cm (18")
- 130mm clearance beneath frame for mobile hoist
- Choice of table lengths to suit both children or adults
- Choice of colours, lengths and accessories to meet your requirements.

### Overall Dimensions

Length:	120cm (47"), 150cm (59") or 180cm (71") approx
Width:	63cm (25") approx
Height:	47cm - 97cm approx (18" - 38") approx

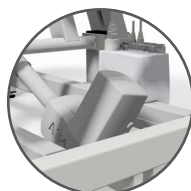
### Upholstery Dimensions (for 180cm model)



### Options & Accessories:



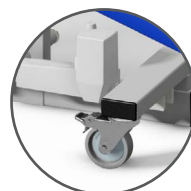
Padded Side Supports



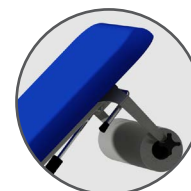
Battery Back-up



Double Foam



Large Castor Base



Paper Roll Holder



D Cushion

## Operational Parameters



50cm

(Height range 47cm to 97cm)



Model 502CTE - Electric Version

Model 502CTH - Hydraulic Version

## Standard Features

- Designed and manufactured in the UK
- Lifetime frame & 5 year parts guarantee
- 16 year average lifespan
- Hydraulic or electric height operation
- Comfort foam
- Easy operation
- Low running costs
- Hardwearing anti-microbial vinyl
- Safe working load 250kg
- Retractable castors
- Hoist clearance 130mm
- Fold-down side support rails
- Choice of three lengths: 120cm (47"), 150cm (59") and 180cm (71") (approx. 4, 5 and 6ft)

## Technical Standards

- IP Rating - IPx4
- EEC Classification - MDD93/42/EEC Annex IX Class 1
- Electrical Standard - IEC601 Part 1 + 60601 P (EN)
- Vinyl Flame Retardant to CRIB 5 (BS 7176)
- Foam to BS 5852: Part 2: 1982, Ignition Source 5 [CRIB 5]
- CE Marked
- Externally audited to ISO9001:2015 by LRQA

## Upholstery Vinyl

- Flame retardant to BS 5852 Ignition Source 5 - CRIB 5 (BS 7176) Medium Hazard
- Independently tested to verify effectiveness at reducing the spread of MRSA, E.coli & other similar bacteria & fungi
- Rated at 500,000 Martindale rubs without damaging or marking the top layer, making it suitable for all high-traffic, heavy-duty areas
- Phthalate free
- Please note: If the upholstery colour is not specified, 'Almond' will be supplied



Jasmine



Battleship



Cobalt



Cocoa



Grape



Mulled Wine



Pillarbox



Gingersnap



Candy



Applemint



Sapphire



Atlantic Blue



Lupin



Denim



Cool Blue



Rainforest



Wasabi



Citrus Green



Marigold



Almond

Elite Healthcare Ltd.  
F1Swords Enterprise  
Park,  
Feltrim Road,  
Swords, Co.Dublin  
K67E984

t: 01 8903932

e: sales@elitehealthcare.ie

www.elitehealthcare.ie

elite  
healthcare