

ALT-9008 – Alerta Ruby 2 – a replacement alternating pressure relieving mattress system with triple cell-on-cell air cells, a static base section and an in-use height of 8” for effective prevention and treatment of patients at very high risk of developing a pressure ulcer in hospital, nursing and care home environments.

With simple to use settings and functionality, the **Alerta Ruby 2** enables the care provider to quickly set up the mattress system and have it operating at optimal pressure for a specific user with ease.

The wide range of features make the **Alerta Ruby 2** a highly versatile and cost effective solution which has been manufactured to comply with the most stringent quality and in-use guidelines.

Alerta Ruby 2 incorporates cutting-edge **SensaCare Truflo Technology®** - constant auto pressure sensing through an air sensor and microcomputer regulator to provide ultra-low interface pressure and promote an even ambience for natural sleep patterns and stable blood circulation with Ultra-Silent™ pump operation.

TECHNICAL SPECIFICATION

Mattress Specification

- > Mattress Dimensions: 200 x 90 x 20 cm (78.5 x 35.5 x 8")
- > Mattress Weight: 10kg (22lb)
- > Cell Structure: Triple cell-on-cell
- > CPR: Quick release toggle
- > Max Load: 200kg (441lb)
- > Heel function (3 x heel cells with one way valves)

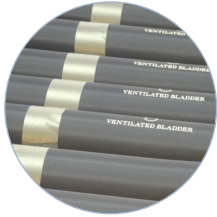
Pump Specification

- > Operating System: SensaCare Truflo Technology®
- > Pump Dimensions: 34.5 x 24 x 12.5 cm (13.5 x 9.4 x 4.9")
- > Pump Weight: 2.8kg (6.1lb)
- > Cycle Time: 10, 15, 20, 25 minutes
- > Memory function
- > Air Output: 8 litres/minute
- > Power Input: AC220-240V, 50-60Hz
- > Power Consumption: 7W
- > Fitted with hanging brackets

Cover Specification

- > Multi-stretch PU
- > Vapour permeable
- > Water resistant
- > Machine washable
- > Antimicrobial
- > 360 degree zipper
- > White underside of cover

KEY FEATURES AND BENEFITS



Nylon TPU coated cells



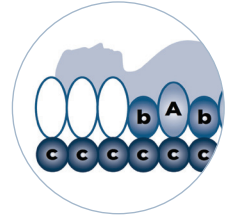
Independently removable cells



Removable heel cells



Branded cells



Pillow function



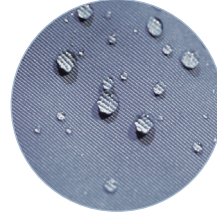
CPR release



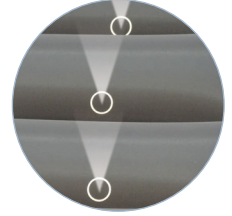
Anchoring straps



Zippered storage bag



Multi-stretch, waterproof & vapour permeable PU cover



Micro-perforated cells



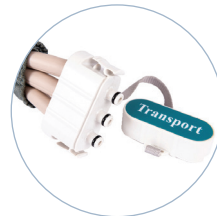
Antimicrobial, machine washable



360 Degree zipper



Robust pump connection



Transport mode



Remote control

CONTROL PANEL

Digital LED display for ease use

Visual and audible warning of air loss, power failure and alternate failure

Remote control communication

Digital patient weight input

Multiple cycle time control for efficiency



Ultra-Silent™ pump operation to avoid disturbance



Static/alternating modes

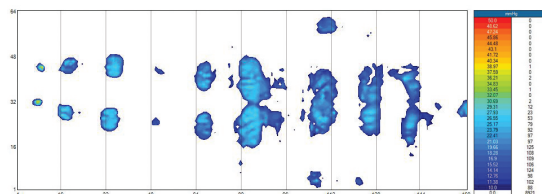
Seat inflation for additional surface support to facilitate the sitting position

Control panel lock to prevent unauthorised or accidental tampering (hold for 2 sec)

Power on



Scan to watch Alerta Medical



Clinical pressure mapping evaluation