

TRU Plate Relocator Kit Installation Instructions

NOVUSTECH:

 [@novustech](https://www.instagram.com/novustech)

 [@novustechspacers](https://www.facebook.com/novustechspacers)

 Kitchener, Ontario, Canada

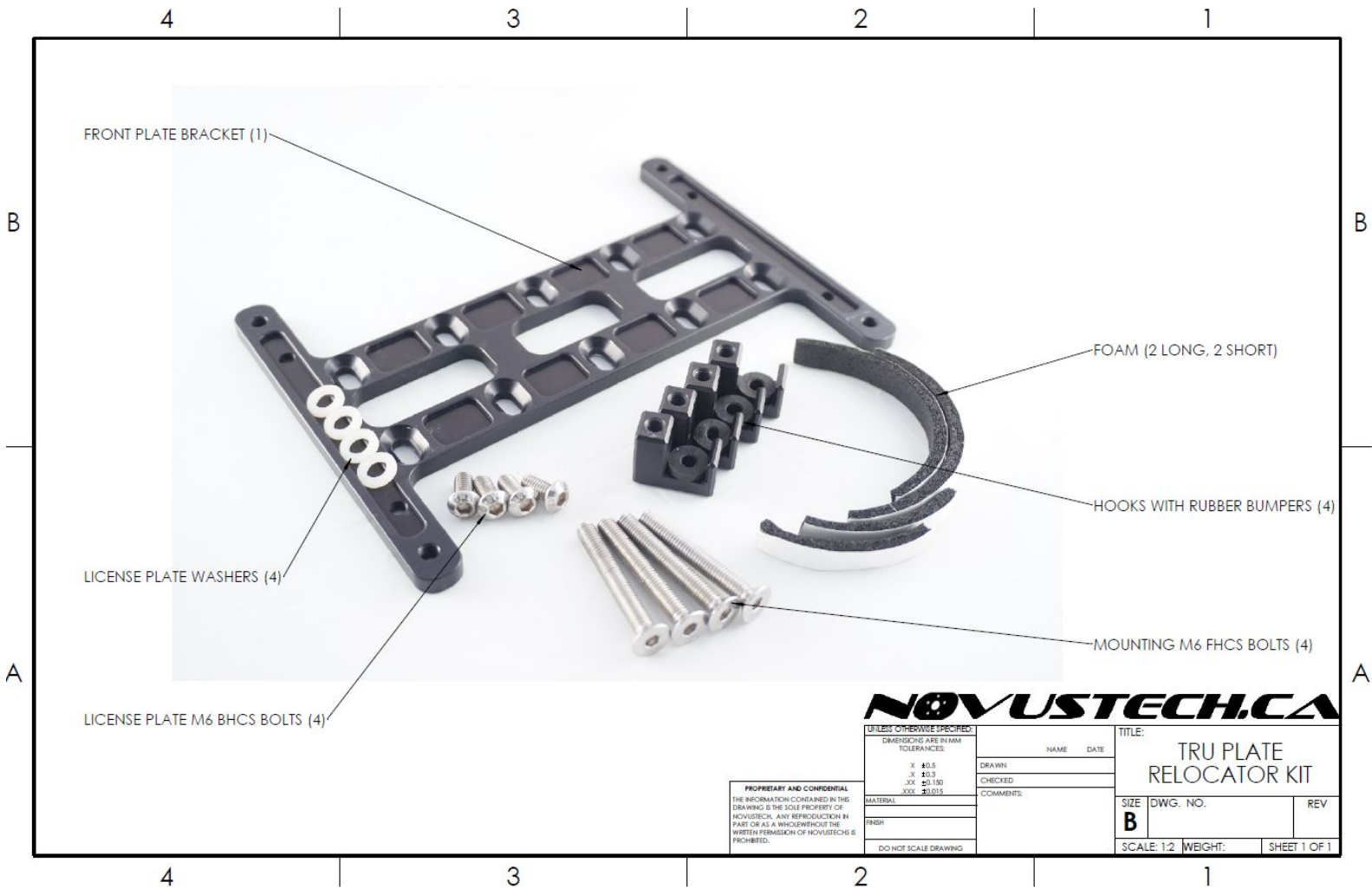
Time:

- 5-10 minutes

Tools required:

- 4mm Allen (Hex) Wrench

WHAT IS INCLUDED:



PRE-ASSEMBLED KIT

NOTE 1: You can use whichever 4 slot-holes you want in order to achieve the location desired

NOTE 2: Only thread in the hooks ~2-3 turns

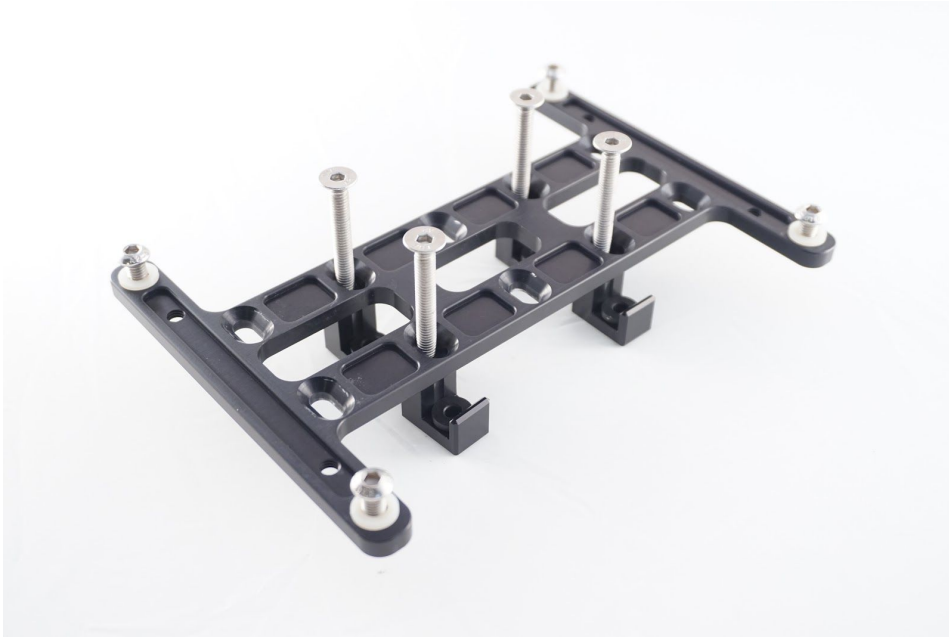
NOTE 3: Do not forget to put the foam strips in the designated slots on the back of the Plate Bracket





Instructions:

Step 1: Pre-assemble the plate mount (without the license plate itself)



- Step 2: Determine where you want the plate located and slip the 4 hooks through the grille (we recommend to mount so that the hooks are grabbing the grille from underneath, pointed upwards)
- Step 3: Hand tighten the 4 bolts, while ensuring the hooks have hooked onto the grille from behind. (Note that the slotted holes give you 10mm of vertical adjustment, but also having the hooks catch onto the grill from below or above each fin, also gives you an additional/optional 10mm vertical offset)



- Step 4: Once tightened, ensure that the bracket itself and the hardware clears all parts of the bumper and the only contact is made through the foam strips
- Step 5: Install the license plate onto the bracket (use the 4 white washers if you are not going to use a clear cover)

Quick installation video (took ~3 minutes to install): <https://youtu.be/tvpbyuEgPTQ>

Materials

- Front bracket and hooks are made out of AL 6061-T6 and are hard anodized
- Hardware is made of 316L SS
- Washers are made of Nylon

Notes:

I. Racing / Track

The TRU Plate Relocator Kit was designed so it doesn't interfere with the cooling system on daily driving but also to be easily removed for racing events. In most cases only the license plate has to be removed and the mount itself can stay on the car as it was designed to allow airflow through.

II. Euro Plates

The Front Bracket has 4 additional holes that can be used to mount a European License plate with a standard plate cover



Additional Resources:

Youtube Customer Review and installation video:

<https://youtu.be/xgZ6rTEkukU>

Instagram Customer Review:

https://www.instagram.com/p/BtrbHIXDJ_E/?utm_source=ig_web_copy_link