

# Floating Bed® Catalog - Options & Pricing

with photos

Pat. # 7,367,068

V# 2021b



Indoor Beds



Outdoor Beds

**Pg #**

2-21 **Section I - Floating Beds - Example photos, at various locations with accessories**

## **Section II - Item descriptions & photos:**

- 22 **Standard Package Beds** (Floating Bed + recommended accessories for most people, most uses)
- 23 **Mattresses** (**Memory Foam Mattress included** in Standard Package, other types available), & **Weights**
- 24 **Cushioned Frame Padding** (included in Standard Package), **Removable Fabric Frame Wrap**
- 25 **Indoor Ceiling Install Methods & Parts** (for visual reference), and Add-A-Beam & Arch stand
- 26 **Stands, wood**, 4 Leg Pyramid (similar to a Tripod; using wood beam legs, for fixed location)
- 27 **Stands, metal**, 4 Leg, for fixed location (permanent), or telescoping (portable) metal legs
- 28 **Stands, alternate styles** (Cabana, Gazebo, A Frame, Cantilever, for Indoor or Outdoor use)
- 30 **Nets & bowers**: silk, cotton, polyester, or cotton; decorative, privacy, or mosquito
- 31 **Tents**, waterproof outdoor, or indoor for privacy
- 32 **Stand Canopies & Shades**: various models - for privacy, blocking sun, or waterproof for rain
- 33 **Stand fabric accessories**: Leg Wraps, Mattress Covers, & Sofa Pillows - examples & pricing
- 35 **Sofa Backrest Pillows, Mesh Surround System.**
- 36 **Quick Guide for choosing Fabric colors & types, for all fabric accessories** (also call for advice)
- 37 **Commercial Model Floating Beds; Heavy Duty Frame, 8 / 16 / 32 Cascade Lines, Chain Lines**
- 37 **Other miscellaneous options**
- 38 **Photo of packaging. Ready to ship via UPS, air, checked baggage, or in your car**
- 39 **Shipping**: weights & measures of the packages
- 40 **Floating Bed Size Comparison & Visual Chart**
- 41 **Itemized Price List**

For other custom items - hoist, tether, etc, call us. Also see our **Preinstall Guide pdf**

*phone: 641 472 6651 • email: info@floatingbed.com • website: www.floatingbed.com*



## It's the best sofa

for family, or friends

## It's the best Bed

take the sofa backrest pillows out  
if you want more room for sleeping







**At home indoors, outdoors, or in between**





## Residential & Commercial Installation Examples



In the Living Room - sofa and guest Bed







**Main Bedrooms**













As a Cabana

Andaz Maui Hyatt







Peoples' Choice award-winner  
at the 2016 Hotel Expo.  
Aqua color theme.  
Shown with small tray table  
(in white)  
for drinks or accessories.



Hotel Ohta Park, St Petersburg, Russia  
4 Guest Bungalows







Adventure Suites Hotel

Strong - holds a crowd of friends



Actual customer's Bed, but yes,  
your dreams feel like this in it ...







Dorchester Hotel, South Beach

Water Garden Spa







We Care Spa



6' Youth Floating Bed, Standard Package.  
With Memory Foam mattress, padded perimeter frame.



Perfect for smaller rooms.



Perimeter mesh option,  
for kids or special needs.







Hippocrates Health Institute & Retreat Center

Andaz Maui Hyatt - field of Beds, field of dreams







**Topia Inn**  
listed as the #2 Boutique Hotel in the World on Yahoo Travel

Hotel entry courtyard







Daintree Rainforest Retreat Center

Hard Rock Hotel, as Cabanas







Domaine -Arvor Hotel & Spa, France

Celebrity's Floating Bed (there are many)







Another Celebrity's Floating Bed.  
This one is a Double, modest in size,  
as a sofa or sometimes Bed.  
With sofa pillows.

## **New upscale model, The Halo Bed.**

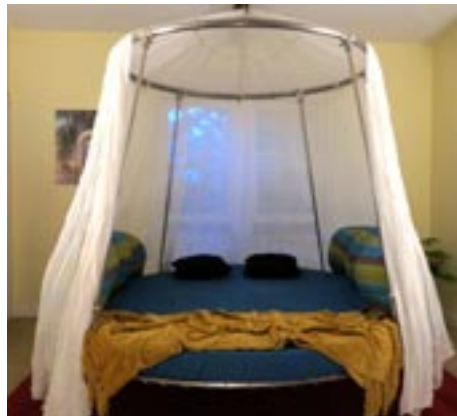


Bed, sofa, or guest bed

with sofa (furniture grade) cover

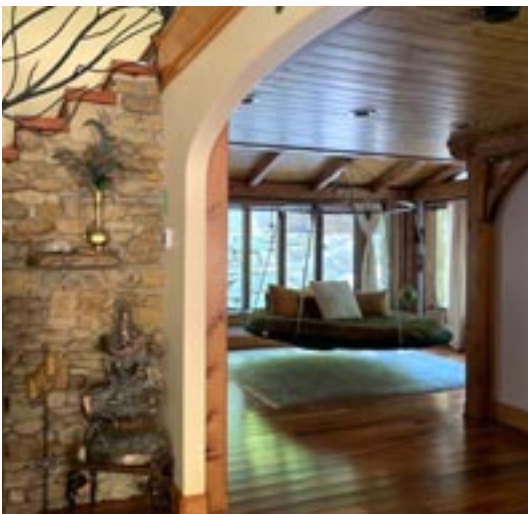


with bedsheets



**All stainless steel. Modern, beautiful.  
Special order. Call for pricing and availability.**





## Halo Beds



**Artistic Weldment  
Detail**



**Decorate (or not)  
to suit your taste**

## Floating Bed Standard Package - This package may be all you need.

Includes the Bed, & the following preferred options, for comfort, practicality & usability:

- **Floating Bed** (with our proprietary tensioning system for a supremely comfortable, flat sleeping surface)
- **Padded Stainless Steel frame, covered** with durable indoor/outdoor Sunbrella fabric, to cushion against bumps
- **Memory Foam Mattress**, for the ultimate in comfort (other mattress types are available)
- **Ceiling Installation Trim Kit** (Stainless hardware and white ceiling trim ring for mounting)

**Standard Model:** • Youth (6') \$4,495 • Double (6'6") \$4,795 • Queen (7'4") \$4,995 • King (8') \$5,495

**Commercial Model:** Add \$500. For Hotel, spa, public use; built & rated for even more abuse than usual.

**Halo Bed:** \$9,990 any size.

Floating Beds are all-weather rated, & can be used indoors or out. To use our memory foam mattress outdoors, just add our Sunbrella mattress cover for outdoor rain protection (if exposed without our tent or awnings, etc) Beds below are shown with extra pillows, sheepskins, blankets, etc (not included in Standard Pkg).



Queen, in Living Room as a sofa



Youth Bed

Without padded frame, with 8 Suspension Lines

Queen, as the Main Bed

Double Bed & sofa, for 1-2 people of medium height





## Mattress Options

- **Memory Foam Mattress & cover** - the ultimate in comfort. **Included in the Standard Pkg.**

Use it outdoors too, with the additional waterproof **Sunbrella mattress cover** (\$495.)

(Our Memory Foam mattress is available alone, if for some reason you want it without a Floating Bed.)

- **Dryfast Foam**, alternate mattress for outdoor use, includes Sunbrella mattress cover. \$1,290.
- **Organic Wool, Cotton, or Latex** mattresses are also available. Call for pricing.

**Notes:** Our beds use standard Eastern King Deep Pocket fitted sheets. Yes, they will fit, we guarantee it.

### **The mattress does not look very thick. How can that be comfortable?**

The underlayment (under the mattress), pictured below on the left, is a proprietary specialty woven net that works like a box springs. As an added benefit, you can adjust the tension on it, from soft to firm.

It feels like an 8" thick mattress.

Do not let the low profile fool you. The Floating Bed is extremely flat, yet the mattress conforms to your body. It is more comfortable than you can imagine, thanks to the gentle rocking.



Bed underlayment, shown without mattress  
(i.e., as a simple, very high end hammock)



Complete Bed, with Memory Foam mattress

---

### **Weight Kit Option Recommended.** (not seen). They simply attach under the Bedframe.

#### **Major Benefits:**

Reduces first entry swing distance.

Reduces tilting when 2 or more people are in the Bed.

Increases swing duration, and makes it swing even smoother.

\$220 /pair. (1 pair recommended, 2 pair is optional.)

### **3 Frame Treatment Options:**

## **Exposed Stainless Steel, or Cushioned Frame Padding, or Removable Fabric Frame Cover Wrap**

**1. Stainless Steel Frame**  
as on Basic Floating Bed.  
Modern look & feel, but  
no “bump protection”  
(Fewer people order this.)



**2. Cushioned Frame Padding**  
(over the stainless steel as above).  
Fabric-covered foam,  
cushions against bumps.  
Good with children,  
smaller or tighter spaces.  
Softer “look & feel.”  
In Beige, indoor-outdoor  
Sunbrella fabric.



**Included in Standard Pkg.**

**3. Removable Fabric Frame Cover Wrap**  
(over Padded Frame above).  
Easy to remove for washing.  
Comes in any color to suit your  
decor, in Sunbrella or other fabric.  
Also hides the (optional) weight kit.  
Add \$250.





# Indoor Ceiling Mount Options

A normal qualified remodel carpenter can do the installation in 1 - 2 days in most any home or apt.

Installation is explained in the manual, with photos & methods. Call us for installation advice - no charge, ever. Landlords, don't worry. After installation, the ceiling will actually be stronger than it was before.

Our ceiling installation hardware Trim Kit is included with your Standard Package.

Normal - thru the ceiling install, finished with Trim Kit. (Carpenter adds an extra strengthening beam, either in the attic, or above the sheet rock in apartments.)



sheet rock ceiling



concrete ceiling, with our mounting plate



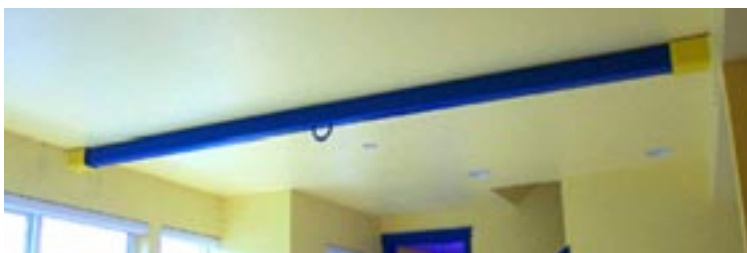
Custom brackets available



**Indoor stands are available** if you don't want a ceiling installation. Stand is large: 700 lbs, arch tube is 5" dia. Call for pricing and alternate options. (However, ceiling install is less expensive.)

**Add-a-Beams:** similar to a massive closet rod, spans between walls in any room.

Looks similar to a standard ceiling beam if painted brown.



## **Outdoor Beds, & notes on their pricing:**

Pkgs start at \$4,395 for a Double with Memory Foam, installed in a well-located tree or existing overhead structure, or \$5,695 with the wood leg stand. Add \$200 for a Queen.

Well-appointed beds (with shades, more decor & options) range from \$7000- \$12,000.

---

## **Floating Bed Outdoor Stand Options - Wood Leg Version**

Wood 4 leg (Pyramid) Stand, the most affordable option.

Completed stand, strong & beautiful, is around \$1500- \$1600 (more with exotic woods).



**Our Stainless Steel Top Bracket (\$795) has 4 ready-made sockets for wood 4" x 4" beams. Your local lumberyard can deliver the beams. Installation is handyman simple.**

**Basic instructions: (Detailed instructions come with the Top Bracket)**

Go choose, or have your lumberyard deliver 4 Grade A or #1 4"x 4" beams - no knots, 14' - 16' long. Fir or better. Paint or varnish the wood legs. Insert the 4" x 4" beams in the 4 sockets of our Top Bracket.

Stand it up in the air. Stabilize the 4 legs with our cross-brace rope, or mount to deck, or into the ground.

Add decor to the legs, mosquito net, tent, etc. Attach Shade Sails, which can rotate around to block the sun.



## Floating Bed Outdoor Stand Options - Metal Leg Versions

Metal 4 leg (Pyramid) Stand, the next option. Legs are beautiful, burnished Aluminum.

This commercial grade complete stand is even stronger than wood & totally maintenance free, \$2,995.

Telescoping legs for transport, portability, camping (fits in a car). Or, choose fixed length legs.

- Our best outdoor stand for most people, if you have the space. Goes up fast.



Burnished Telescoping leg detail.





# Floating Bed Alternative Stands & Custom Options



A - Frame Stand. The most practical indoor stand.  
Takes less space than the 4 leg pyramid stand.  
\$2,995.

There are other stand options.  
We sell several varieties of them.  
Others can be built on site by your carpenter.  
We are happy to give free advice.



Simple Cantilever Arm Stand.





# Floating Bed Cabanas



Custom cabanas, decks, trellises, & other options are available too.  
**Call for details.**



## Bowers - Canopies / Nets

**Bowers & nets** add decor & some privacy in a living room setting, or used as a Daybed / occasional Guest Bed. Stimulate the imagination in a child's (or adult's) bedroom. Easy to open or close. Outdoors, they provide protection from flying bugs & keep out wind blown debris. Custom Polyester (\$75), cotton gauze bower (\$150), or silk (\$150-\$350).



White polyester net



Cotton (gauze) bower, decorative / privacy

White polyester net,  
artistically applied

White poly net, layered over Burgundy net,  
for increased privacy and color depth.  
(Stand leg wrap fabric in Red also shown.)





# Floating Bed® Tents

Create more living space at your home -  
An inexpensive way to add another room.

Use as an extra bedroom, guest room, or playroom.  
You can take it with you! - if moving, or for camping.

These are not cheap, light, disposable camp tents.  
Durable, commercial awning grade, heavy canvas.

Many user friendly & practical features:

Screened window & entire front door seal with 2" wide  
velcro for speed & ease of fully opening or closing.

Reinforced D rings & grommets, bottom drawstring.

**Outdoor Heavy Duty \$1290. Indoor privacy tent: \$990.**

(For less expensive/temporary tarp tent options, call.)



## Outdoor Tents (Waterproof)



door slightly open,

Or fold around back  
(completely open),  
easy - takes 1 minute -  
for Sun or Stars



# Protection Options for Sun, Rain, or Privacy

## Floating Beds are all-weather rated.

The reason to protect the Bed is for your own comfort & use. Otherwise leave it out, no worries. Built to withstand Sun, rain, & snow, all year round. Stainless steel, nautical materials used throughout.

Some options below are for blocking sun, others are to keep bedding and occupants dry.

## Bed in Snow - no problem!

This Floating Bed is outside, unprotected for 16 years of hot summers, cold winters. Still going strong!



## Shade Sails, open weave

Block Sun, some of the rain.  
Semi-porous fabric lets the breeze flow through  
1-4 pcs (3 shades as shown)  
\$125 each



## Rain + Shade Canopies, Sunbrella

Awning grade fabric, many colors. Totally blocks Sun, Wind, & Water, for a fully enclosed dry tent.

Stand Top Cap \$295, or add 1 - 4 side shades (3 as shown) \$295 ea





## Protection & Decorative Options:

### Mattress Covers, Top Cap Canopies, Fabric Leg Wraps, Shade Sails, Pillows

#### Well-appointed Floating Bed Example

Choose any size Floating Bed & stand,  
then add:

- Top Cap \$295
- (2) Shade Sails, each \$125
- Decorative Leg Wrap Fabric \$395
- 2 Sofa Pillows \$495
- Sunbrella Mattress Cover \$495
- Removable Frame Wrap \$250
- Weight kit \$220

(Memory Foam, included in Std Pkg)



Any Shade Sail can be quickly wrapped around a leg when not needed ...



... and easily unwrapped again for shade or privacy.

**Decorative Options:**  
**Top Cap Canopies,**  
**Pillows, Fabric Leg Wraps**

- Top Cap \$295
- Decorative Fabric Leg Wraps \$395
- Sheepskin, Bowron, 8 pelt \$890
- Removable Fabric Frame Wrap \$250
- Weight kit \$220
- Memory Foam Mattress (included)



- Decorative Leg Wraps
- Mosquito Net
- 2 Sofa Pillows
- Removable Fabric Frame Wrap
- Sunbrella Mattress Cover
- Memory Foam Mattress (inc in Std Pkg)
- Weight kit



- Stand Top Cap (with internal light)
- Mosquito net



## Pillows, for Sofa Use - in many colors, Sunbrella indoor-outdoor fabric.



The large backrest pillows dramatically increase the usefulness of your Floating Bed - now it's a sofa, as well as a bed or guest bed. Sit up with a book or your laptop, watch a movie, or lay back, enjoying some peace alone, or relaxing with friends.



## Mesh Surrounds - for special needs



## Choosing (optional) Fabric Colors

for accessories, such as “Sofa” (backrest) Pillows, Removable Frame Wrap, Tent, etc.

Our fabric items are made from Sunbrella, the best quality indoor / outdoor fabric.

Our padded perimeter frames all feature Beige Sunbrella Linen Tweed #6054 frame cover.

It is a neutral earth tone (dark beige) that wears well. If you are not ordering the removable frame cloth wrap to cover the permanent pad, you may want to find colors for pillows & accessories that coordinate with #6054.

Sunbrella is washable, but light colors take more maintenance. FYI, tweeds show least wear over years.

### First, call or email us & ask for our Floating Bed Catalog Fabric Choices.pdf

It has many color-coordinated “themes,” combinations already matched for you, that look great together.

**Or**, to choose your own (other) custom fabric colors for accessories, go to: <http://www.outdoorfabrics.com/>

On the left side of the page is a link list of the fabric options. Choose from among:

1. Sunbrella Furniture grade fabrics (at the top of that list), either Solids or Specialty Weaves, or
2. Awning grade fabrics, in 60” width. (Best for outdoor Beds.) Call to ask about other fabrics.

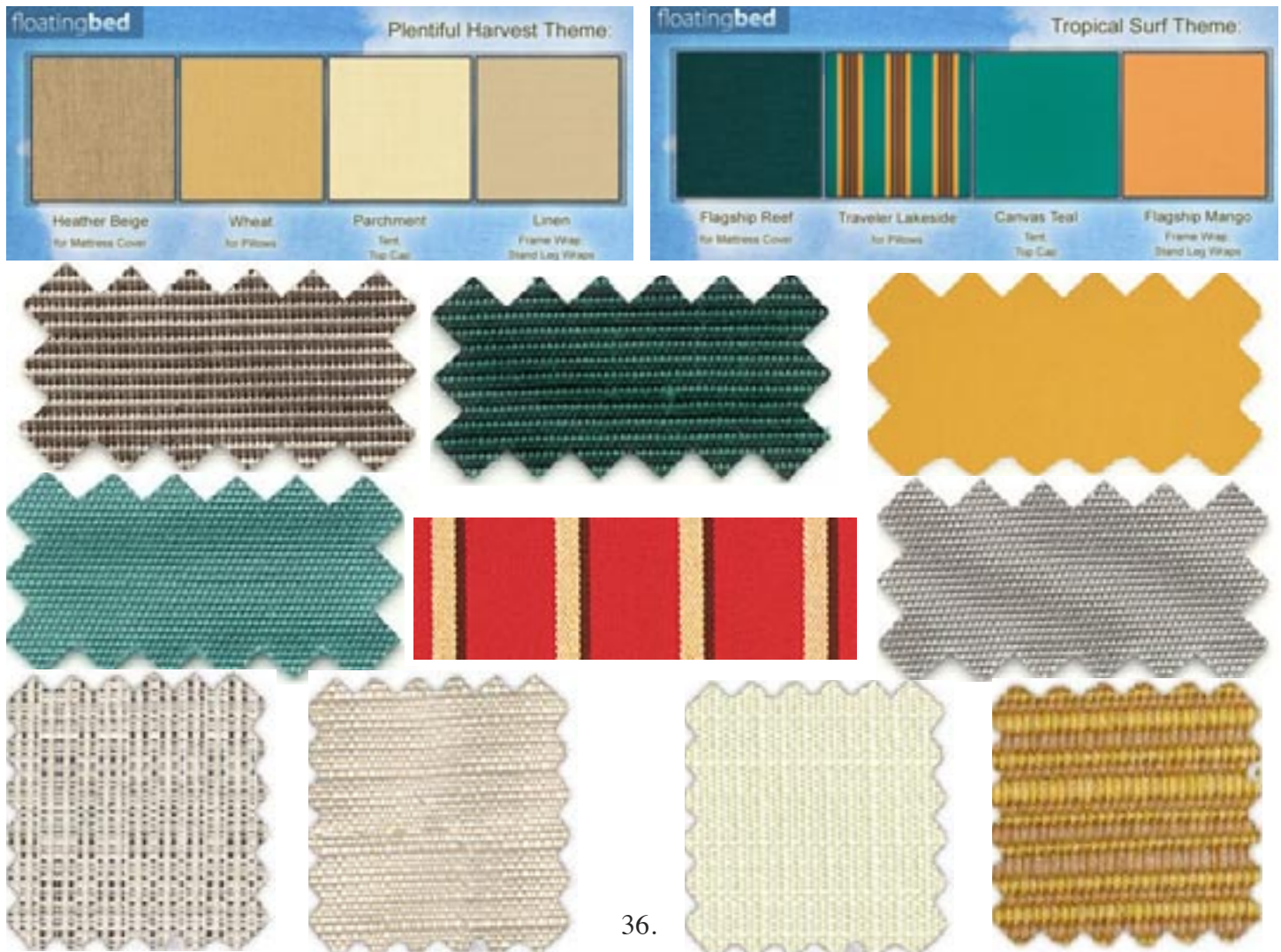
The Awning grade fabrics are waterproof, & are necessary for the Tent, Top Cap, & Mattress Cover.

The furniture grade fabric is slightly softer & more flexible than awning grade, but not by much.

So awning grade fabric is just fine for pillows or any of our items, & recommended for outdoor Beds.

We recommend that you call or email us to help decide on fabrics, & get delivery time.

Here are just a few sample swatches (at reduced size), but please **call and ask for our Fabric Choices pdf**.





## Other Floating Bed options

Other options are also available. Some are not pictured in the catalog, so please call to ask.



1. **Extra Heavy Duty Commercial Frame** for Hotel & other public locations (add \$500).
  2. **Fewer Cascade Lines** - as few as 8 lines, rather than 16 (or 32) on our standard Beds; the 8 line option requires the Commercial frame.
  3. **U Joint** for less maintenance (no need for grease on the Carabiner/ceiling attachment).
  4. **Hoist**, to raise it up to the ceiling if you need the room for other daytime use.
  5. **Tether**, to limit the Bed's swing distance.
  6. **Tray Table**, (page #10) for drinks & personal items.
- and more. Call for details.

---

### Chain Floating Beds

Your choice of chain size & type:  
Stainless Steel, gold chromate, black iron, galvanized, or other type of chain.

With gold chromate chains,  
Black sheepskin, & sofa pillows

This is one of two Beds at Dropbox  
(the internet co), used as a creative, relaxation,  
& brainstorming area.

Floating Beds with Stainless Steel chains



## Floating Bed, Telescoping Stand, Memory Foam Mattress, Tent

Folded Bed, with everything above, & ready to ship to you, or anywhere.  
Ship UPS, FedEx, air freight or checked baggage, anywhere in the world.

This complete package will fit in most cars, ready for camping or travel.  
Fast setup, safe & dry off the ground, for temporary housing or emergency relief.





# Floating Bed Shipping: weights & measures

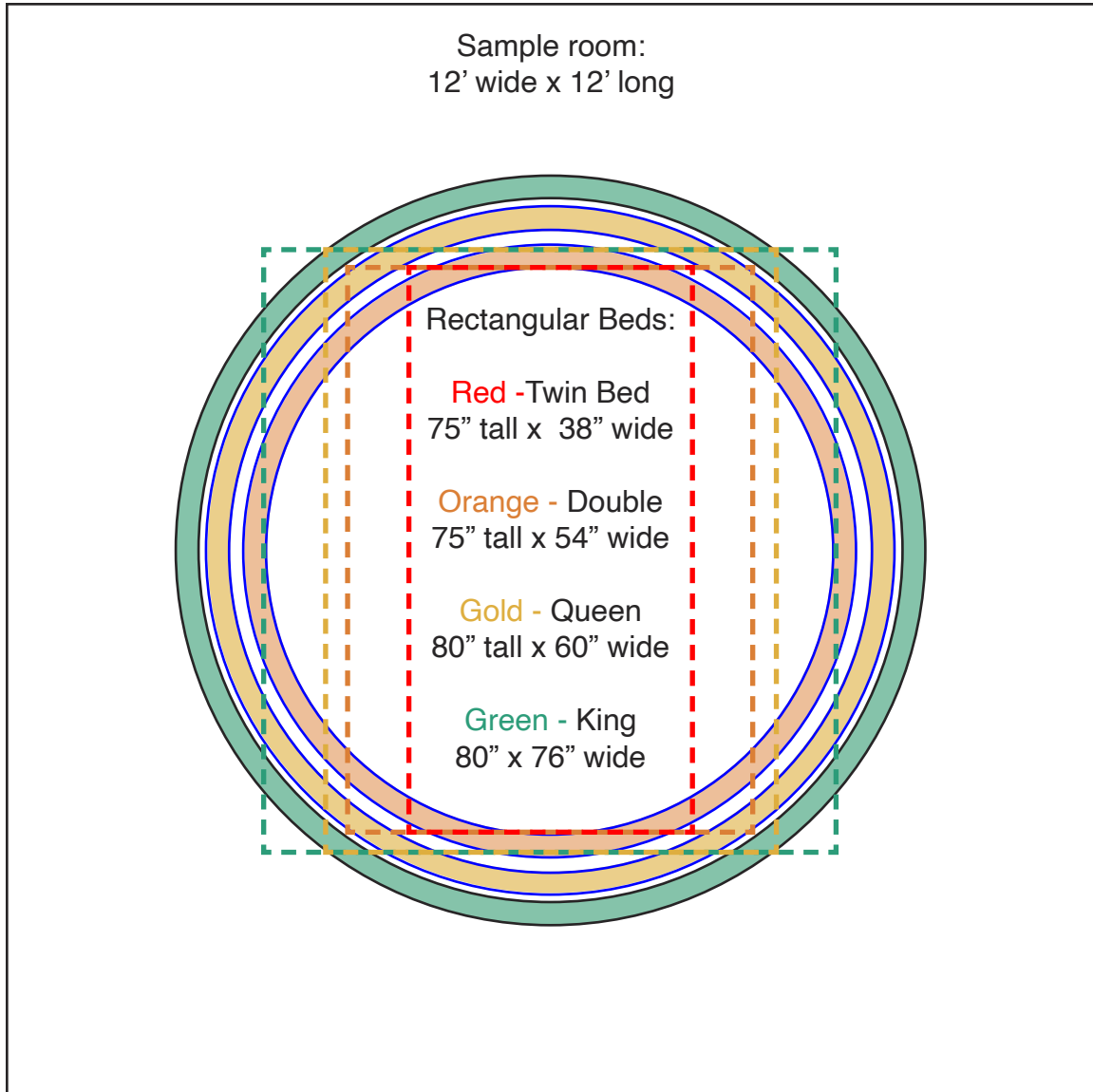
Pat. # 7,367,068

**Note on shipping:** We normally arrange shipping within the US (via UPS), & overseas with various carriers.

Item Description	weight		Length		Width		Height		notes
	kg	lbs	cm	inches	cm	inches	cm	inches	
<b>Floating Bed, commercial</b>									
King	34	85	186	73	54	21	23	9	
Queen	32	75	171	67	54	21	23	9	
Double	30	70	160	63	49	19	23	9	
Youth	28	65	154	60	49	19	23	9	
<b>Floating Bed, standard</b>									
King	31	75	186	73	54	21	23	9	
Queen	29	65	171	67	54	21	23	9	
Double	29	60	160	63	49	19	23	9	
Youth	26	56	154	60	49	19	23	9	
<b>Mattresses</b>									
King	23	50	87	34	56	22	56	22	
Queen	21	45	82	32	51	20	51	20	
Double	19	40	79	31	41	16	41	16	
Youth	16	35	77	30	41	16	41	16	
<b>4 Leg Stand - Top Bkts</b>									
(for AL or wood beam legs)	20	44	51	20	51	20	41	16	
<b>Al stand, HD</b> 2 pkgs (@2 legs ea)	30	65	250	98	18	07	11	04	
<b>Al stand, light</b> ”	23	50	250	98	18	07	11	04	
<b>Sofa Pillows</b> 2 pkgs (1 pillow ea)	10	25	59	23	44	17	44	17	
<b>Tent, other fabric accessories</b>									
(Typical, average)	08	16	41	16	41	16	31	12	

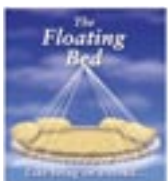
## Floating Bed Sizes vs rectangular bed sizes, overlay

scale: 1 inch = 24" (2')



Floating Bed	"Average" Size	Mattress Diameter	Frame Outer Dia	Frame Color (in above drawing)
King	8'	93" (236cm)	99"	Green
Queen	7' 4"	87" (221cm)	91"	Gold
Double	6' 6"	77" (195cm)	81"	Orange
Youth	6'	71" (180cm) or 77"	75"	(not shown)

(See preinstall guide pdf for drawings of all Bed sizes in various size rooms, and call us.)





# Floating Bed® Options & Price List

Pat. # 7,367,068

Pg #	Item Description	Price	other notes
<b>1-21 Floating Bed examples, for ideas.</b>			
22.	<b>Floating Bed, Standard Package (Recommended)</b>	Youth (6') \$4,495. Double (6'6") \$4,795. Queen (7'4") \$4,995. King (8') \$5,495.	<b>With Memory Foam Mattress, padded frame</b> " " "
	<b>Heavy duty Commercial Bed</b>	add \$ 500.	(Also required with 8 Cascade Line option)
20-22	<b>Halo Bed, new high end model</b>	\$9,990	
<b>Choose accessories - add any items below:</b>			
23.	Memory Foam Mattress, with indoor cover		(Included in The Standard Package)
23.	Sunbrella Outdoor Mattress Cover	\$ 495	Put on the Memory Foam for outdoor use
23.	Other mattresses: Wool, Cotton, Latex, Dryfast	\$ 990	& up - call
23.	Weight Kit (per two weights)	\$ 220	(2 recommended, possible to add 4)
24.	Cushioned frame padding, add		(Included in The Standard Package)
24.	Removable fabric frame wrap, add	\$ 250	To choose your Bed color, remove to wash
25.	Ceiling Install Hardware, Trim Kit		(Included in The Standard Package)
25.	Custom ceiling hardware, Add-A-Beam, etc		Call for price
25.	Stand, Indoor Large Heavy Arch	\$6,495	
26.	Outdoor Wood leg stand, Stainless Steel Top Bkt	\$ 795	(buy four 4"x 4" wood beams, etc to finish)
27.	Burnished Aluminum Leg stand	\$2,995	With Fixed length or Telescoping legs
28.	Stand, A-Frame	\$2,995	
29.	Stand: Cabana, Gazebo, Cantilever, or other		Call for price
30.	Bowers, nets - Custom Poly, Cotton, or Silk	\$ 75 - \$150, or silk \$150 - \$350	
31.	Tents, waterproof	\$ 1290	Call for cheaper tarp or indoor tent options
32.	Shade Sails, open weave heavy duty (each)	\$ 125	(waterproof shade sails now available)
33.	Stand Top Cap - Canopy fabric cover	\$ 295	
34.	Stand side covers, waterproof, each	\$ 295	(5 required for waterproofing stand tent)
34.	Stand - Leg Wrap decorative fabric (all 4 legs)	\$ 395	
35.	Sofa backrest pillows, large (pair) Sunbrella	\$ 495	
35.	Surrounding mesh for youngsters, special needs	\$ 500	for the Youth Bed (more for larger Beds)
36.	Fabric choices, examples		Ask for our pdf with co-ordinated options.
37.	16 standard Cascade Lines; optionally 8 - 32		Call (Extra charge for any # of lines other than 16)
37.	Chain (Cascade Line) Beds - add	\$ 750	additional, or more for stainless chain - call
37.	Hoist, tether, u-joint, tray table, other custom options		Call
38-39	As packed for transport, package weights & sizes for shipping UPS or air.		
40.	Bed size comparisons, measurements		