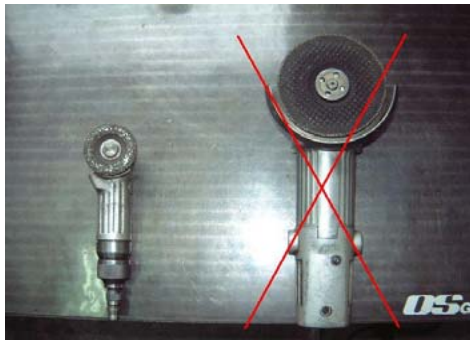


Warning when installing front differential for GTR32, 33, 34

date: 23, Feb 2009



1. The sander on the right will not fit, so use an air sander like the one on the left.



3. As shown in the image on the above, shave a little of the blue parts before placing the differential in the case, and shave more if the differential hits. Depending on the differential case, areas other than the blue parts shown may hit so be aware of this. Once this process is done, make sure the shavings are cleaned out properly.



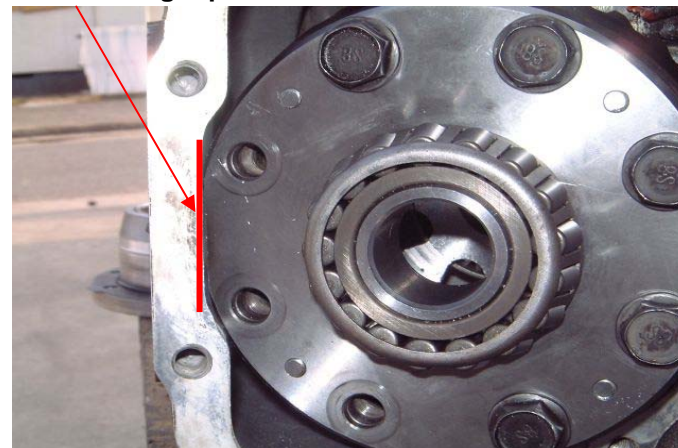
2. Make sure a cloth soaked in water is placed inside so the shavings do not get inside. If it is not soaked then it can be a fire hazard.



Do not shave while any kind of cleaning product is not washed out properly. This is a fire hazard.



5. Use straight part.



4. As shown in the image on the right, tighten the ring gear bolts with the regulation torque. Use the straight part as a guide.

