

# -INSTALLING TRANSMISSION CROSS MEMBER FOR OS-88-

## WARNING!

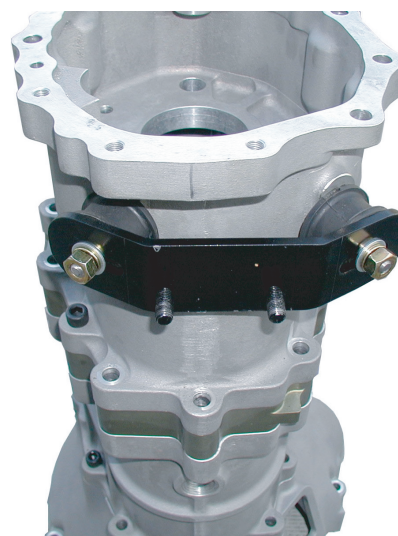
Please read this manual carefully before starting the installation. There are possibilities of serious injury and/or damage to the product, tools and automobile, unless you follow the instruction.

Fit 2 bushings as shown in picture 1. The side that is tapped to the seat should face the transmission case. Tighten it till its surface touches the case. If it won't, check the bolt hole and the surface of the case.



Picture 1

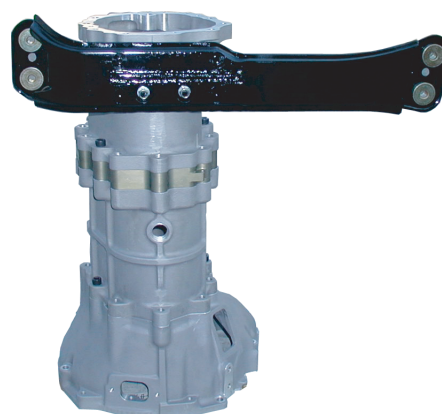
Fit transmission cross member bracket with the nuts enclosed in the kit. See picture 2.



Picture 2

Fit transmission cross member using M10U nuts enclosed. See picture 3.

When attaching the member to the vehicle, please attach it with the attached collar in between.



Picture 3