

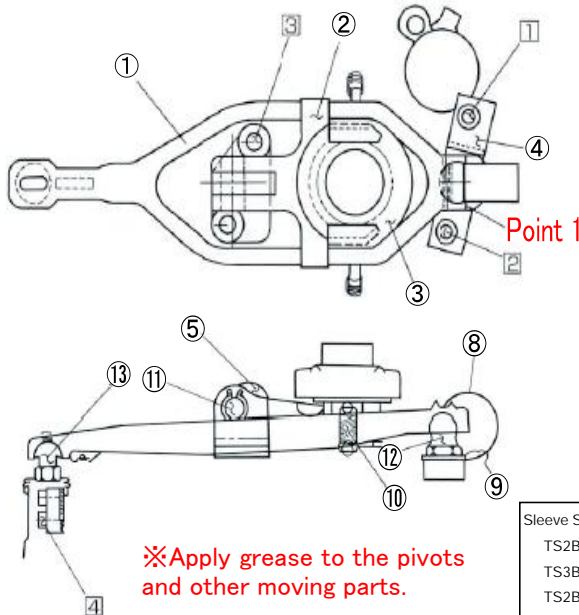
Automatic Adjustment Type Clutch Release Movement Alteration Kit Installation Manual

GTR

For BNR32 / after minor changed model ('93-on models with pull-type release)
For BCNR33 / RB26

CLUTCH RELEASE MOVEMENT ALTERATION KIT INSTALLATION MANUAL

ENCLOSED PARTS IN THE KIT (please check all the parts before installation)



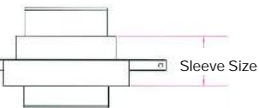
※Apply grease to the pivots
and other moving parts.

Number	Specification	Qty.
1	M8 × 50L	1
2	M8 × 40L	1
3	M 10× 25L	2

Number	Parts
①	Cylinder fork
②	Release fork
③	Sleeve bearing
④	Pivot base
⑤	T bracket
⑧	Leaf spring
⑨	Washer
⑩	Sleeve return spring
⑪	Pin
⑫	Pivot
⑬	Push rod

Sleeve Size

TS2BD	15mm
TS3B/R4C/STR2CD	18mm
TS2B/STR2C	22mm



Installation

1. Remove the genuine release fork, release sleeve, linkage base and etc then replace them with OS Giken components.
2. Temporarily connect ④ and ①, and connect ⑤, ②, and ③. At the same time, check to see if the Point 1(refer to photo) is correctly placed in the ditch. After you check the sleeve bearing operate smoothly, tighten bolt 1, 2 and 3.
3. Remove a taper spring at the bottom of the cup in genuine release cylinder and replace with

General Warning

- ※Check to see if all the parts are enclosed.
- ※ Please be aware of potential risks and hazards when installing our products. We do not take any responsibility for any loss and/or injury occurred when our products are modified, re-used and/or ill-fitted.
- ※Spray aerosol lubricant to the appropriate surface of the moving parts.
Periodical lubrication is recommended.
- ※The clutch release movement alteration parts are expendables. When excessive wear or damage is found, all concerning parts should be replaced at the same time.
- ※All information on this sheet is based on Japanese Domestic Model vehicles and may not be applicable in your country.
- ※Specification may be changed without notice.

OSGIKEN
Racing Power Unit & Parts Development

464 OKIMOTO OKAYAMA-CITY OKAYAMA 702-8001 TEL(086)277-6609 FAX(086)277-8115

URL:www.osgiken.co.jp/