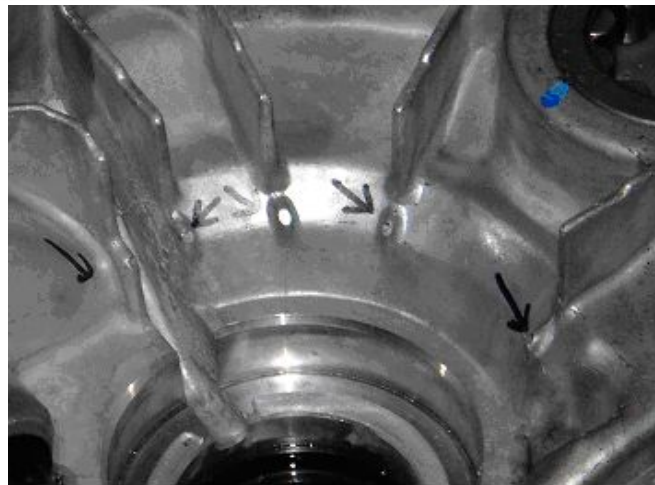


OS Super Lock L.S.D. Installation For EK-9 and DC-2

Transmission Case Modification

The case of the OS Super Lock L.S.D. and the transmission case may hit each other. When they hit each other, modify the transmission case to prevent them from hitting each other. **Shave slightly a part of convex surface indicated by arrows.**



Speed Meter Installation

Remove the speed meter drive gear from the genuine differential and attach it to OS Super Lock L.S.D.

Final Gear Installation

Remove oil from the final gear bolts and its screw holes on the case of OS Super Lock L.S.D. After that, apply screw cement on the final gear bolts (Extra Hard). Also slightly apply oil in between the final gear bolt heads and the final gear, and then screw the bolts at 8.5kg.

***All information above applies to automobile models in Japan and it may not apply to automobile models in other countries. Please contact us for details.**

***Because all our products above are for racing performance, we do not accept refund. At any time, we may make minor changes without warning.**