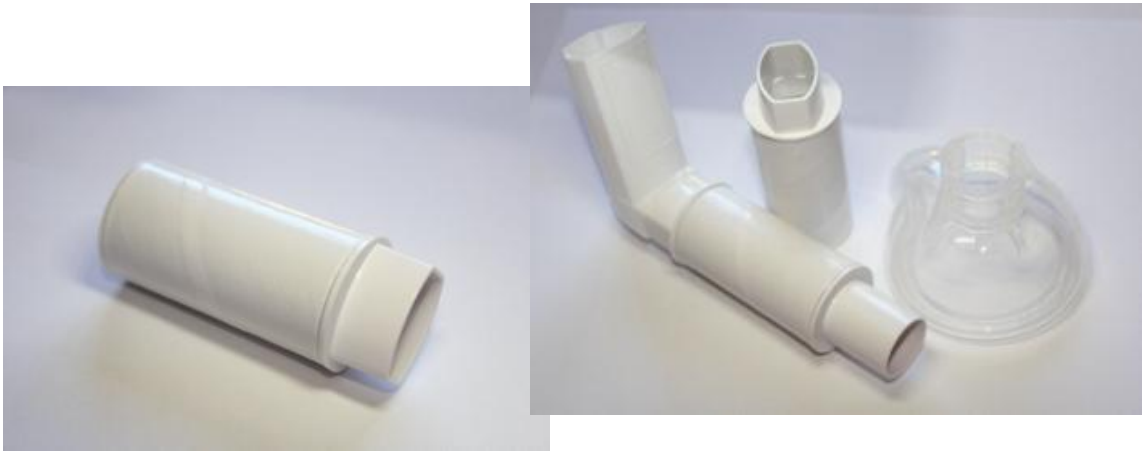


The Ultimate Disposable Solution to MDI



SafeTway Insiratory MDI One-way Mouthpiece by Vitalograph^R

The low resistance SafeTway mouth piece **allows entry of inspired air** from the metered dose inhaler through the mouthpiece to the patient, **but not back to the medication device (mdi)**.

- **Protects patient** and medication canister from **cross -infection**.
- Thus allowing the clinician to utilize **common canister therapy** via American Thoracic Society (ATS) specifications.
- **Inexpensive alternative** to dispensing chambers or nebulizing medication during bronchodilator assessments.

Also **available in Pediatric** size for **young children** or **elderly test subjects** who have difficulty fitting their mouth properly around the standard mouthpiece size. **Standard 22mm mask can be applied** to administer to patients that require a mask technique. (See top right)

Designed to fit standard size MDIs; box of 130, Part number 29797 or Pediatric Part number 29772 box of 150.

