

Thank you for purchasing the SinuPulse Traveler®

The SinuPulse Traveler® pulsating nasal irrigator is an easy to use portable system that allows you to deliver a gentle pulsating saline rinse to clean the nasal passages thoroughly. The pulsating action gently rinses away allergens, dust, mucous, and germs leaving you feeling fresh and breathing better.

Health Solutions Medical Products Corporation

PO Box 4278

Culver City, CA 90231-4278

Tel: 800.305.4095 (Within US) Tel: 310.837.3191 (Outside US)

Web: www.sinupulse.com

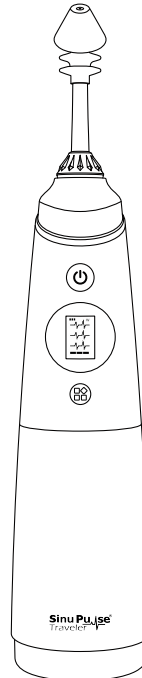
Email: sales@sinupulse.com

SinuPulse Traveler®

Cordless Nasal Irrigator

User Manual

SPT300



Thank you for choosing the SinuPulse Traveler for natural drug-free relief of allergies and nasal congestion. Experience the pulsatile difference.

Contents	01
UL standard	02-04
Product Descriptions	05
Accessories	06
Steps	07-09
Recommended Technique	10
Disassembly	11
Problems and Solutions	12
After-sales Service	13

Health Solutions Medical Products reserves the right of final interpretation for any error in or misunderstanding of the content of this user manual; any product or data updated will be incorporated into the new version without prior notice; and in case of any change in the appearance and color of the product, the product inside the package shall prevail.

IMPORTANT SAFEGUARDS

When using electrical products, especially when children are present, the basic safety precautions below should always be followed.

READ ALL INSTRUCTIONS BEFORE USING

DANGERS:

To reduce the risk of electrocution:

- Do not handle the charger with wet hands.
- Do not immerse in water or other liquid.
- Do not use while bathing.
- Do not place or store the product where it can fall or be pulled into a tub, shower stall or sink.
- Do not reach for a product that has fallen into water. Unplug immediately.
- Check the charger cord for damage before the first use and during the life of the product.

Please read WARNINGS before use.

USE ONLY AS DIRECTED, IF SYMPTOMS PERSIST SEE YOUR DOCTOR/HEALTHCARE PROFESSIONAL. ALWAYS READ THE LABEL.

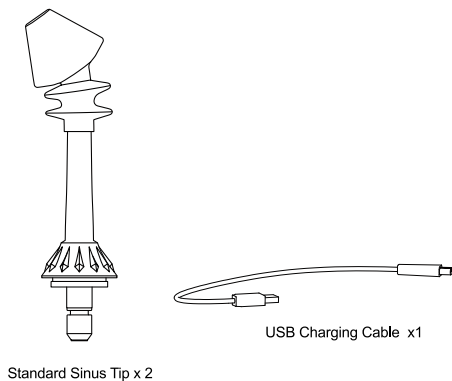
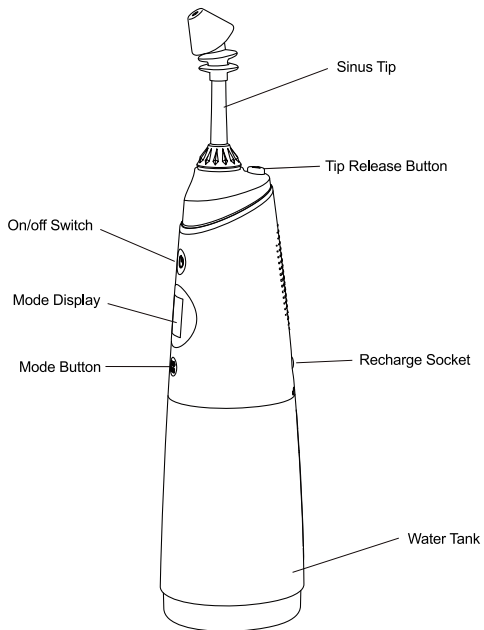
WARNING:

To reduce the risk of burns, electric shock, fire, serious injury or damage issues:

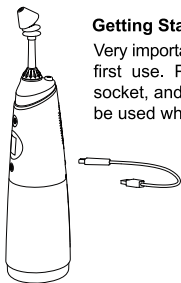
- Do not plug this device into a voltage system that is different from the voltage system specified on the device or charger.
- Do not use this product if it has a broken cord or plug. In case of not working properly, or it has been dropped into any liquid, contact your local distributor.
- Always use distilled, micro-filtered (1 micron or less), commercially bottled or previously boiled & cooled down water at lukewarm or body temperature. May be used with all saline products. Do not use tap or faucet water for dissolving the mixture unless it has been previously boiled and cooled down.
- Do not rinse if nasal passages are completely blocked or if you have an ear infection or blocked ears. If you have had recent ear or sinus surgery, contact your physician prior to irrigation. If you experience any pressure in the ears or burning in the nasal passages, stop irrigation and get further directions from your physician. Keep out of reach of children.
- Read all enclosed instructional materials and warnings before use. SinuPulse Traveler® is designed for sinus rinsing only. Please do not use it for any other purpose.
- Do not drop or insert any foreign object into the product.

- Keep charger and cord away from heated surfaces.
- Do not operate where oxygen or aerosol sprays are being used.
- We recommend that you irrigate at least ONE HOUR PRIOR to bedtime in order to avoid any residual drainage of solution.
- We do not recommend use for children or adults who have physical limitations or mental disabilities due to developmental or acquired disorders. All users must be able to fully understand the instructions for use before rinsing.
- Do not place the white motor unit in a microwave for disinfection. Because of the unit's stainless steel components, this can cause damage or fire hazards.
- To avoid ear discomfort while rinsing: if you have had ear surgery, please contact your physician prior to irrigation. Do not use if you have an ear infection or blocked ears.
- For household use only. Do not use outdoors.
- Closely instruct and supervise children and individuals with special needs in the proper use of this product.
- Children should be supervised to ensure that they do not play with the appliance.

SAVE THESE INSTRUCTIONS



Replaceable tip/accessories are available from retailers



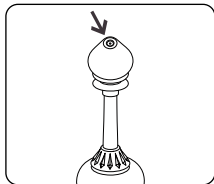
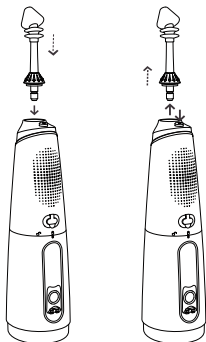
Getting Started

Very important! Please fully charge the device before first use. Plug the USB cable into the charging socket, and connect the power. The product cannot be used when charging.

Installing and removing tips

Insert tip into the center of the knob of the nasal irrigator handle until it is properly in place.

To replace or remove the tip from the handle, press the tip eject button and pull the tip from the handle.



Make sure the blue silicone bulb is pushed down fully on the white sinus tip so there is no interference with water flow. The exit hole of the sinus tip should reach the exit hole of the blue silicone bulb.

Mix one saline packet with 240 mL (8 fl oz) volume of lukewarm, distilled, micro-filtered (1 micron or less) or previously boiled and cooled down water.

Fill reservoir by rotating and removing reservoir from the upper white motor unit as shown in figure 1. Replace the white motor unit over the reservoir and rotate until locked. Swirl the unit thoroughly to dissolve the mixture. You can also fill by lifting the small flip top on reservoir.

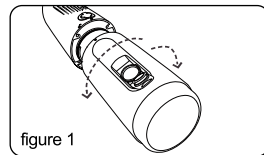


figure 1

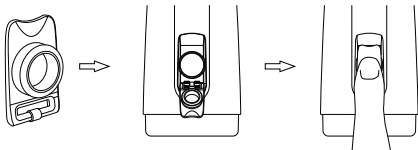
- The power and mode buttons are on the front panel. Press the power button to turn the unit on. Press the power button again to power off. The SinuPulse Traveler will default to the setting that was last in use.
- Press the mode button to cycle through the various rinse settings: GENTLE, MEDIUM, HIGH, and WAVE. You can also select the mode before turning the unit on.
- After 120 seconds of continuous operation, the device will automatically shut down.
- Battery charge is displayed during use; press the mode button to detect the battery strength when not in use.
- Charge SinuPulse Traveler when the battery indicator displays low. The Traveler cannot be used while charging.
- When charging, the battery indicator will display until full.
- Charger: AC 100-240VAC, 50/60Hz, output 5V 1A

- ◆ Position unit to ensure that it is in the best working condition
- ◆ Nasal tip may be turned 360 degrees to adjust the direction of water flow.
- ◆ When using the product for the first time, please start from the lowest setting (GENTLE) and increase the pressure as is comfortable.



If the tank cover is off

1. Align the gasket of the tank cover with the tank port;
2. Press in until you hear a click.

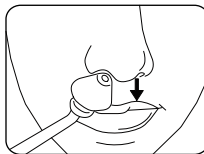


Step 1: Standing in front of a sink, bend forward slightly to your comfort level and tilt your head down. Keep your mouth open, without holding your breath, and place the nasal tip against your nostril.

Step 2: Press the blue power button and the solution will enter the nostril and soon begin to drain from the opposite side. Depending on the head position, a small residual solution may drain from your mouth. It is best to spit it out. However, there is no harm if accidentally swallowed. Stop if you feel any discomfort, pain or pressure during the irrigation.

Step 3: Continue to rinse until half of the solution is used. Press the power button to stop and switch nostrils. Now repeat steps 1 and 2 and rinse the opposite nasal passage or nostril. Press the power button again to stop when finished.

Step 4: Blow your nose very gently, without pinching the nose completely to avoid pressure on eardrums.

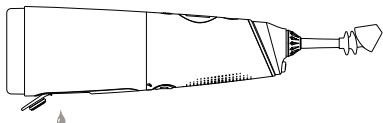


Cleaning Directions:

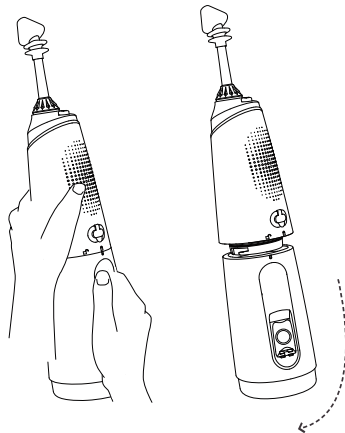
Rinse the SinuPulse Traveler[®] after each use by running clean water through the unit and dry with a clean-lint free towel and allow to air dry. We recommend running a dilute vinegar solution (2:1) through the unit monthly to help disinfect and decalcify the unit.

When Finished

Turn the unit off. Lift the flip top on the reservoir as shown, and empty any liquid left in the reservoir. Turn the unit on till the reservoir is empty and turn the unit off.



To remove the reservoir, hold the unit with your left hand and slide the reservoir down counterclockwise with your right hand.



Problems	Reasons	Solutions
Leakage between tip and knob	Damaged sealing o-ring, tip out of place	Lubricate sealing o-ring with small application of Vaseline and reinsert
Water reservoir leaking	Dry sealing o-ring	Lubricate sealing o-ring with small application of Vaseline
Pressure is not enough	Using under low voltage	Use after fully charged
Device cannot get started	Using under low voltage	Use after fully charged
No water flow	Blocked hose filter	Clean the filter

If you can not solve the problems according to the above methods, please consult the dealers or go to the designated after-sales service for maintenance.

After-sales service

Health Solutions Medical Products Corporation warrants the purchaser that this product is free from defects in material and workmanship for 12 months from the date of purchase. If the product proves to be defective, Health Solutions will repair or replace it at no charge provided the product has not been abused, misused, damaged, or altered. Irrigation tips, reservoir, and other accessories are specifically excluded.

To order replacement parts or report a problem, please contact Health Solutions Medical Products Corporation:

Voice: 800.305.4095 (Toll free within the continental US)
 Voice: 310.837.3191 (Outside the US, Alaska, and Hawaii)
 Fax: 310.837.1065

Email: sales@sinupulse.com
 Website: www.sinupulse.com