

CONTENT

1. BEFORE INSTALLATION	01
2. PRODUCT INTRODUCTION	02
3. SAMPLE CONNECTION	03
4. INSTALLATION TIPS	03
5. INSTALLATION STEPS	04
6. REPLACEMENT FILTER	06
7. FILTER REPLACEMENT INSTRUCTION	06
8. FREQUENTLY ASKED QUESTIONS	07
9. LIMITED PRODUCT WARRANTY	07
10. WARRANTY REGISTRATION	08

If you have problems during the purchase or installation process, please contact our customer service.

 www.frizzlife.com

 support@frizzlife.com



FOLLOW US @Frizzlife

Receive first-hand promotion info and be the first one getting exclusive benefits.

Register to activate your warranty with Frizzlife.

- › Scan the QR code to register
- › Email us your order ID and full name at support@frizzlife.com



Find the Installation Video

- › Search “Frizzlife TAM4 Installation” on www.youtube.com

1. BEFORE INSTALLATION

› Inspect Box

Please take out the system and all the components from the box. Inspect them carefully according to “Product Introduction”, and make sure nothing is missing or damaged during shipping. If any parts are cracked or broken, please do not proceed with installation, and contact Frizzlife for an exchange or diagnosis.

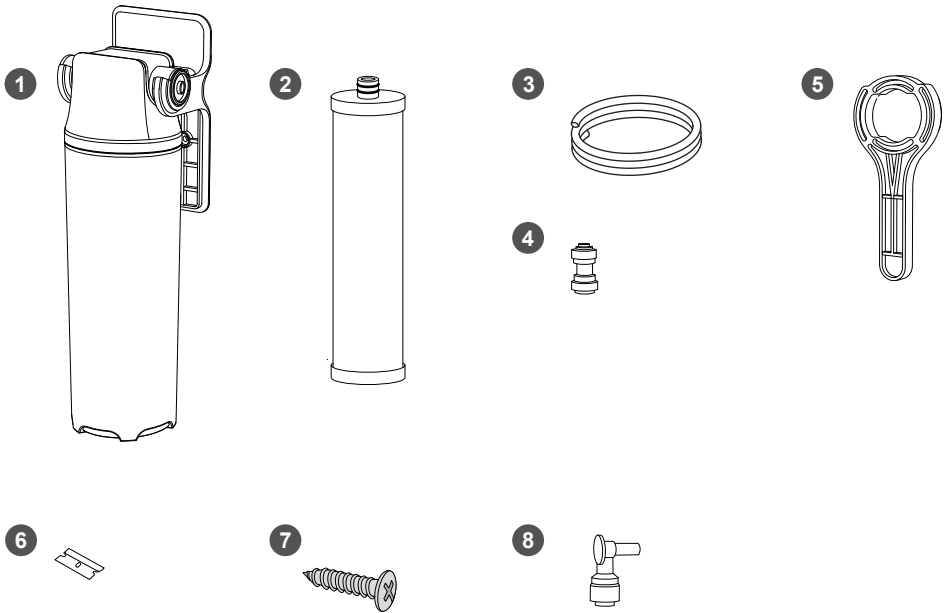
› Technical Parameters

Model No.	TAM4	Dimension	4.9 x 6.1x 15 in
Replacement Filter	FZ-4	Replacement Period	12 months
Feed Water Pressure	Min.20psi, Max. 80psi	Feed Water Temperature	Min.39°F,Max 100°F
Applicable Water Source	Municipal water (Recommended to treat with RO water)		

› Precautions

- Do not use it with water that is microbiologically unsafe or of unknown quality without adequate disinfection.
- For cold water use only.
- Do not freeze the filter, as this case cause cracking and water leakage.
- Do not allow children under 3 years of age to have access to small parts during the installation of this product.
- Testing was performed under standard laboratory conditions, actual performance may vary.
- This installation must comply with all applicable state and local regulations.
- Please flush water for 15 minutes for the first time usage.

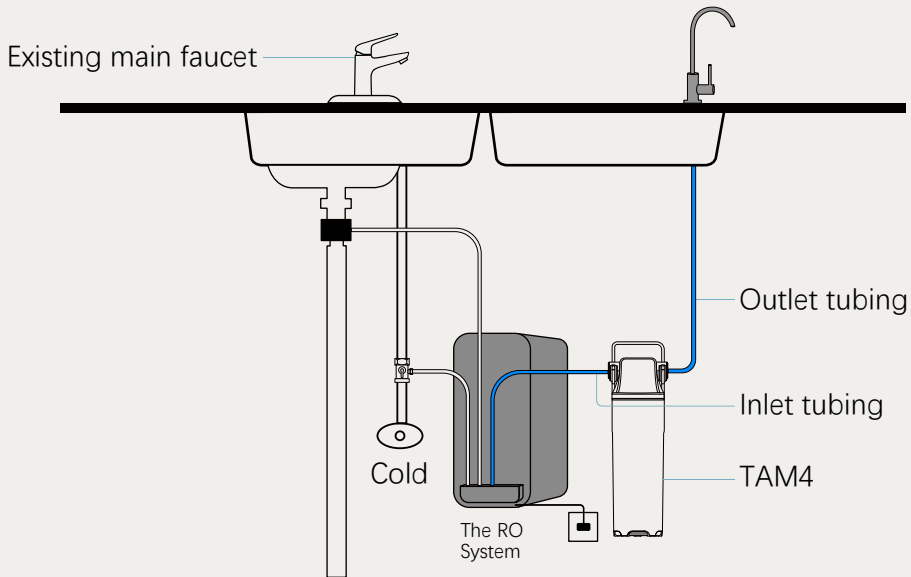
2. PRODUCT INTRODUCTION



- 1 TAM4 Filter System
- 2 FZ-4 Filter Cartridge (Pre-loaded)
- 3 1/4" Tubing
- 4 1/4" Quick Fitting

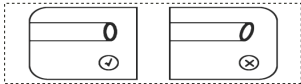
- 5 Wrench
- 6 Blade
- 7 Mounting Screws
- 8 Elbow Fitting

3. SAMPLE CONNECTION



4. INSTALLATION TIPS

› How to cut the tubing?



Please cut the tubing into two sections in proper length, make sure cut them squarely and cleanly.

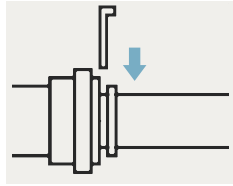
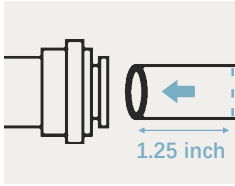
› How to connect/disconnect the tubing?

To connect: Please push the tubing into the fitting and make sure it is fully inserted. Then put the blue lock clip on the fitting, it will lock the tubing in place.

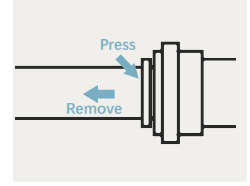
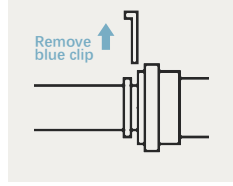
To disconnect: Please remove the blue lock clip from the fitting, push in the lock sleeve, and then pull out the tube from the fitting.

Note: If the tubing is not fully inserted, water leakage may occur. Pulling out the tubing directly will damage the fitting, which may also cause water leakage.

1. Insert to seal the connection



2. Remove to disconnect

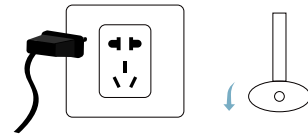


5. INSTALLATION STEPS

⚠ Note: Please always use plumber tape on threaded connection parts to ensure a watertight seal.

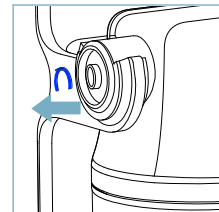
› Step 1: Cut off both water supply and power supply

1. Please unplug the RO system to cut off the power firstly.
2. Please turn off the angle valve to cut off water supply.

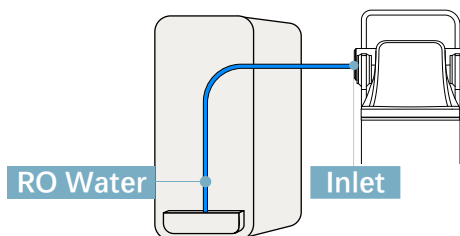


› Step 2: Connect RO system and TAM4 filter system

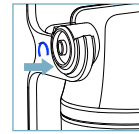
1. Please remove the small blue clip on the "Inlet" side of TAM4 filter.



2. Connect the filtered water tubing from RO system to the "Inlet" side of TAM4 filter, make sure it hits the bottom of fittings.



3. Put back and lock the blue clip.

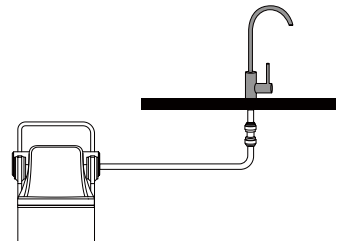


⚠ Please note that the elbow fitting is not a must for installation, you do not have to use the elbow fitting if it is not necessary. Please make sure the tubings are fully inserted, otherwise may result in water leakage.

› Step 3: Connect TAM4 filter system to dedicated faucet

1. Insert the 1/4" tubing provided into the "Outlet" port of TAM4 filter system in the same way.

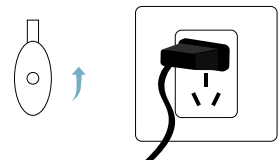
2. Connect the other end of 1/4" tubing from "Outlet" port of TAM4 filter system to 1/4" quick fitting.



⚠ Please cut the 1/4" plastic tubing provided in proper length firstly if necessary.

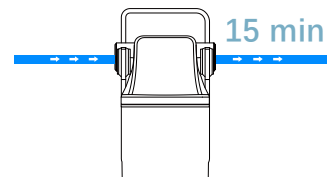
› Step 4: Check for leaks

1. Turn on the angle valve and check for leaks.
2. Connect the power supply.



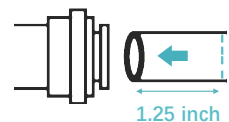
› Step 5: Flush the TAM4 filter

1. Please flush the system for 15-20 minutes before starting to use.



⚠ TDS result after TAM4 filter system will be higher than result directly from RO system. This is normal as TAM4 filter remineralizes the RO water.

Note: Please make sure tubings are FULLY inserted into the ports, otherwise water leakage may occur.



6. REPLACEMENT FILTER

The Frizzlife Under Sink Water Filter System requires care and cleaning after a period of time. It is recommended to change the cartridge according to corresponding time intervals in the table below. If the system has been working properly and the filtered water output is slowing down, it may be time to change the filter cartridge.

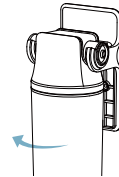
System Model No.	Replacement Filter No.	Filtration Capacity
TAM4	FZ-4	12M

⚠ Note: All the service life of the filter cartridge listed are based on actual laboratory test and the provided water. The actual service life of filter cartridge depends on source water quality and daily water usage.

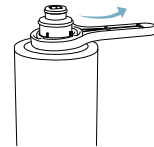
7. FILTER REPLACEMENT INSTRUCTION

⚠ Note: With the ATUO Shut off design of the system, you do not need to shut off the water supply when doing the replacement.

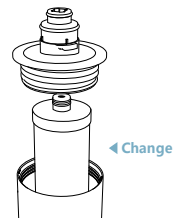
› Step 1: Twist the housing clockwise



› Step 2: Using the wrench to unscrew the housing body



› Step 3: Take out the old cartridge and load with new one, then install back in the same way



› Step 4: Flush the new cartridge for 15 minutes before starting to use

8. FREQUENTLY ASKED QUESTIONS

› Q: What should I do if water leaks after installation?

A: If once installed the system should leak, please shut off water supply firstly. If the leaking occurs at the thread, please wrap plumber tape on the external thread. Please contact Frizzlife customer service team for solutions if the water leakage persists.

› Q: Why TDS result goes up after TAM4 filter?

A: TDS result after TAM4 filter system will be higher than result directly from RO system. This is normal. Because RO systems remove the minerals together with harmful contaminants, but now TAM4 post filtration adds these minerals back to your drinking water.

› Q: When should I replace the filter cartridge?

A: The recommended service life of FZ-4 filter cartridge is 12 months. Please note all the service life of filter cartridge listed are based on actual laboratory test and the provided water. The actual service life of filter cartridge depends on feed water quality and daily water usage.

9. LIMITED PRODUCT WARRANTY

TAM4 Under Sink Alkaline Remineralization Filter System | Warrantor: FRIZZLIFE INC

› ONE YEAR LIMITED FRIZZLIFE WARRANTY

The Frizzlife TAM4 Under Sink Alkaline Remineralization Filter System are warranted to the original purchaser. To be free of defects in material and workmanship by FRIZZLIFE INC, FRIZZLIFE will replace or repair components of the unit that Frizzlife has deemed to be broken within the limits of the warranty without charge. The customer is not responsible for any freight involved with shipping the item back for inspection and shipment of replacement for items. Frizzlife is not liable for cost of removal, installation, transportation or any other charges in connection with a warranty claim.

Customer must register their systems with Frizzlife within **90** days of purchase in order to obtain a warranty. Warranty will discontinue after the unit is removed from the location where it was originally installed. Warranty begins on the date of delivery of product to the customer.

› Owner's Warranty Responsibility:

As a condition of this Limited Warranty, the owner must ensure that periodic maintenance of the system is performed as described in the literature enclosed with the system. Should your unit develop a defect or otherwise fail to perform in accordance with this warranty, you should contact the retailer from whom the product was originally purchased.

1. Frizzlife is not liable for anything that we deem as abuse of the units, including but not limited to, misuse of product outside of intended use, equipment modifications, unauthorized repairs, improper installation, damage from freezing, hot water, fire or other acts of God outside of Frizzlife control.

This warranty will be void if defects occur due to failure to observe the following conditions:

- | Incoming water to the the system cannot exceed 100°F.
 - | Do not use outdoors or in a location that is subjected to direct sunlight or freezing. This warranty will not be effective unless and until the Frizzlife is shown to have been used in accordance with the installation and maintenance instructions accompanying the product.
 - | The filter cartridges should be replaced in time according to the recommended replacement period.
 - | The plastic housings should be replaced every 18 months.
2. Filter Cartridges are considered as disposable items, thus are not covered by warranty.
 3. Customer is responsible for proper operation, which includes complete and continual leak inspection.
- | Most of the unit components are made of plastic and eventually can break or crack from stress.
 - | There are no other warranties which extend beyond what is described above.

10. WARRANTY REGISTRATION

150% EXTENDED WARRANTY

1. Email us you order ID and full name at support@frizzlife.com within 90 days.
2. Scan the QR code below to register



If you have any questions, any suggestions, or you need any assistance, please free to contact us anytime at support@frizzlife.com.

Your satisfaction is always our top priority!