

*Frizzlife*<sup>®</sup>

# **OWNER'S MANUAL**

---

**Model: TAM3**

# CONTENT

- 1. BEFORE INSTALLATION ..... 1
- 2. PRODUCT INTRODUCTION ..... 2
- 3. SAMPLE CONNECTION ..... 2
- 4. INSTALLATION TIPS ..... 3
- 5. INSTALLATION STEPS ..... 3
- 6. FILTER CARTRIDGE REPLACEMENT ..... 6
- 7. MAINTENANCE ..... 6
- 8. LIMITED PRODUCT WARRANTY ..... 7

Thank you for purchasing Frizzlife TAM3 Alkaline Remineralization Under Sink Filter System. If you have any questions or need any assistance, please contact: [support@frizzlife.com](mailto:support@frizzlife.com)

## Find the installation video

1. Search 'Frizzlife TAM3 Installation' on [www.youtube.com](http://www.youtube.com)

## Register to get 150% warranty

1. Email us your order ID and full name at [support@frizzlife.com](mailto:support@frizzlife.com).
2. Scan the QR code to register.



# INSTALLATION INSTRUCTION

## 1. Before Installation

### ► Inspect Box

Open the box and take out the system and all the components. Inspect them carefully according to 'Product Introduction' and make sure nothing is missing or damaged during shipping. If any parts are cracked or broken, please do not proceed with the installation and contact Frizzlife for an exchange or diagnosis.

### ► Technical Parameters

Model	TAM3	Dimensions	5*5*13.5 inch
Feed Water Pressure	Min.20psi Max. 80psi	Feed Water Temperature	Min.39°F, Max 100°F
Applicable Water Source	Municipal water (Recommended to treat with RO water)		

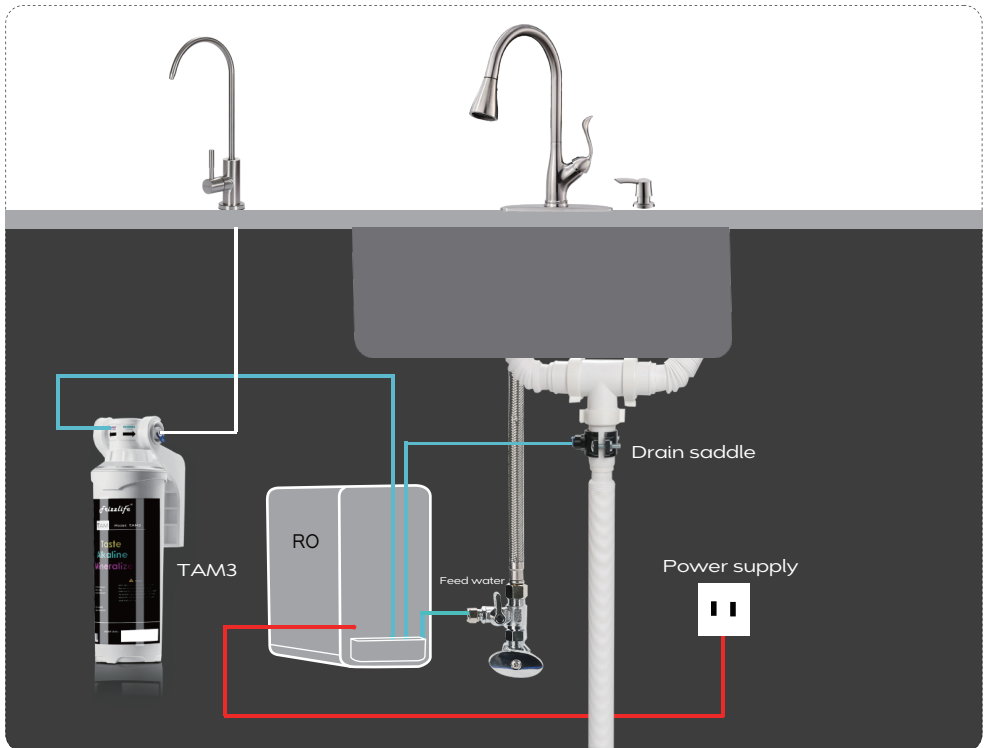
## 2. Product Introduction

The brief introduction of components and sample connection are presented as follows. Please identify and get familiar with components and connection point for a smooth installation.

### ► TAM3

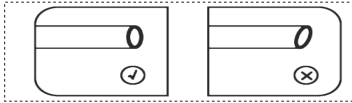


## 3. Sample Connection



## 4. Installation Tips

### ► How to cut the tubing?



Please cut the tubing into two sections in proper length, make sure cut them squarely and cleanly.

### ► How to connect/disconnect the tubing?

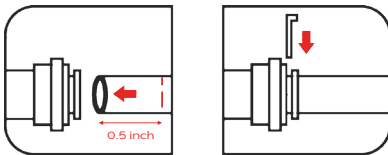
**To connect:** please push the tubing into the fitting and make sure it is fully inserted. Then put the blue lock clip on the fitting, it will lock the tubing in place.

**To disconnect:** please remove the blue lock clip from the fitting, push in the lock sleeve, and then pull out the tube from the fitting

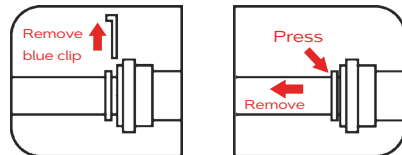
Note: If the tubing is not fully inserted, water leakage may occur.

Pulling out the tubing directly will damage the fitting, which may also cause water leakage.

#### To connect



#### To disconnect



## 5. Installation Steps

Prior to installation, it is highly recommended to watch the video on Frizzlife YouTube channel

**Find the installation video**

1. Search "Frizzlife TAM3 Installation" on [www.youtube.com](http://www.youtube.com)

## Precautions:

- ① Do not use with water that is microbiologically unsafe or of unknown quality without adequate disinfection.
- ② Testing was performed under standard laboratory conditions, actual performance may vary.
- ③ For cold water use only.
- ④ This filter must be protected from freezing, which can cause cracking of the filter and water leakage.
- ⑤ Do not allow children under 3 years of age to have access to small parts during installation.
- ⑥ The installation must comply with all applicable state and local regulations.

**The system should be installed after a reverse osmosis system, please make sure a RO system has been already installed properly before proceeding.**

## Step 1: Cut off both water supply and power supply

- ▶ Please unplug the RO system to cut off the power firstly.
- ▶ Please turn off the angle valve to cut off water supply.

## Step 2: Connect RO system and TAM3 filter system

- ▶ Please remove the small blue clip on the "SUPPLY" side of TAM3 filter.(Fig.1)
- ▶ Connect the filtered water tubing from RO system to the "SUPPLY" side of TAM3 filter, make sure it hits the bottom of fittings.(Fig.2)
- ▶ Put back and lock the blue clip.(Fig.3)

▶ Fig.1



▶ Fig.2



▶ Fig.3





Please note that the elbow fitting is not a must for installation, you don't have to use the elbow fitting if it is not necessary. Please make sure the tubings are fully inserted, otherwise may result in water leakage.

### Step 3: Connect TAM3 filter system to dedicated faucet

- ▶ Insert the 1/4" plastic tubing provided into the "FILTERED" side of TAM3 filter in the same way.(Fig.4)



▶ Fig.4

- ▶ Connect the other end of 1/4" plastic tubing from "FILTERED" of TAM3 filter to the 1/4" quick fitting.(Fig.5)



▶ Fig.5



Please cut the 1/4" plastic tubing provided in proper length firstly if necessary.

### Step 4: Check for leaks

- ▶ Turn on the angle valve and check for leaks.
- ▶ Connect the power supply.



It is important to turn on the water supply firstly before connecting power supply.

### Step 5: Flush the TAM3 filter

- ▶ Please flush the system for 10-20 minutes before starting to use.



TDS result after TAM3 filter system will be higher than result directly from RO system. This is normal as TAM3 filter remineralizes the RO water.

## 6. Filter Cartridge Replacement

Filter	Model Number	Recommended Replacement Period
Alkaline remineralization filter	FZ-4	Around 900-1000 gal



**Note:** All the service life of the filter cartridge listed are based on actual laboratory test and the provided water. The actual service life of filter cartridge depend on source water quality and daily water usage.

### Replacement Instruction:

You don't need to cut off the water supply, since it adopts auto shut off design.

- ▶ Twist the housing counter clockwise and use a wrench to unscrew the housing body.(Fig.6)
- ▶ Use the wrench to unscrew the housing body.(Fig.7)
- ▶ Take out the old cartridge and load with the new one, then install back in the same way.(Fig.8, Fig.9)
- ▶ Please flush the new cartridge for 10-20 minutes before starting to use.

▶ Fig.6



▶ Fig.7



▶ Fig.8



▶ Fig.9



## 7. Maintenance

- ▶ Do not use with water that is microbiologically unsafe or of unknown quality without adequate disinfection.
- ▶ Please replace the filter cartridges regularly to ensure optimal filtration performance.



- ▶ The testing was performed under standard laboratory conditions, actual performance may vary depending on the source water quality and water usage. In case of premature blockage and failure of the filters, it is recommended to replace the filter in accordance with actual usage.
- ▶ Check the system and water pipe fittings regularly for water leakage to avoid any property damage.

## 8. Limited Product Warranty

**TAM3 Alkaline Remineralization Under Sink Filter System  
Warrantor: FRIZZLIFE INC**

### TWO YEAR LIMITED FRIZZLIFE WARRANTY

The Frizzlife TAM3 Alkaline Remineralization Under Sink Filter Systems are warranted to the original purchaser.

To be free of defects in material and workmanship by Frizzlife INC, Frizzlife will replace or repair components of the unit that Frizzlife has deemed to be broken within the limits of the warranty without charge. The customer is not responsible for any freight involved with shipping the item back for inspection and shipment of replacement items. Frizzlife is not liable for cost of removal, installation, transportation or any other charges in connection with a warranty claim.

**1. Frizzlife is not liable for anything that we deem as abuse of the units, including but not limited to, misuse of product outside of intended use, equipment modifications, unauthorized repairs, improper installation, damage from freezing, hot water, fire or other acts of God outside of Frizzlife control. This warranty will be void if defects occur due to failure to observe the following conditions:**

- ▶ Incoming water to the the system cannot exceed 100° F.
- ▶ Do not use outdoors or in a location that is subjected to direct sunlight or freezing.

This warranty will not be effective unless and until the Frizzlife is shown to have been used in accordance with the installation and maintenance instructions accompanying the product.

- ▶ The filter cartridges should be replaced in time according to the recommended replacement period.
- ▶ The plastic housings should be replaced every 18 months.

2. Filter Cartridges are considered as disposable items , thus are not covered by warranty.
3. Customer is responsible for proper operation, which includes complete and continual leak inspection.

Most of the unit components are made of plastic and eventually can break or crack from stress.

Frizzlife cannot be held liable for any damage caused by leaks. There are no other warranties which extend beyond what is described above. To receive warranty service, please contact Frizzlife at [support@frizzlife.com](mailto:support@frizzlife.com)

## 150% Extended Warranty

1. Email us your order ID and full name at [support@frizzlife.com](mailto:support@frizzlife.com)
2. Scan the QR code below to register

