

OWNER'S MANUAL

Stainless Steel Countertop Water Filtration System

Model No.

SS99



CONTENT

1. Before Installation	01
• Inspect the Package	01
• Specifications	01
• Precautions	02
• Product Introduction	02
2. Installation Guide	03
• Sample Connection	03
• Installation Steps	03
3. Use Method	04
4. Filter Replacement Guide	05
• Replacement Filters	05
• Replacement Instruction	06
5. Frequently Asked Questions	07
6. Limited Product Warranty	08
7. Warranty Registration	10

Register to activate your warranty with Frizzlife.

- › Scan the QR code to register
- › Email us your order ID and full name at support@frizzlife.com



Find the Installation Video

- › Search “Frizzlife SS99 Countertop Water Filter Installation” on www.youtube.com

Before Installation

› Inspect the Package

Please take out the system and all the components from the box. Inspect them carefully according to “Product Introduction”, and make sure nothing is missing or damaged during shipping. If any parts are cracked or broken, please do not proceed with installation, and contact Frizzlife for an exchange or diagnosis

✉ E-mail: support@frizzlife.com

Specification

Model No.	SS99
Replacement Filter	DSF02
Dimension (L*W*H)	3.94 * 2.76 * 12.8 inch / 10 * 7*32.5cm
Flow Rate	2 GPM @ 60psi
Operational Temperature	39°F-100°F / 4°C-38°C
Working Pressure	15 psi - 125 psi
Applicable Water Source	Municipal Tap Water

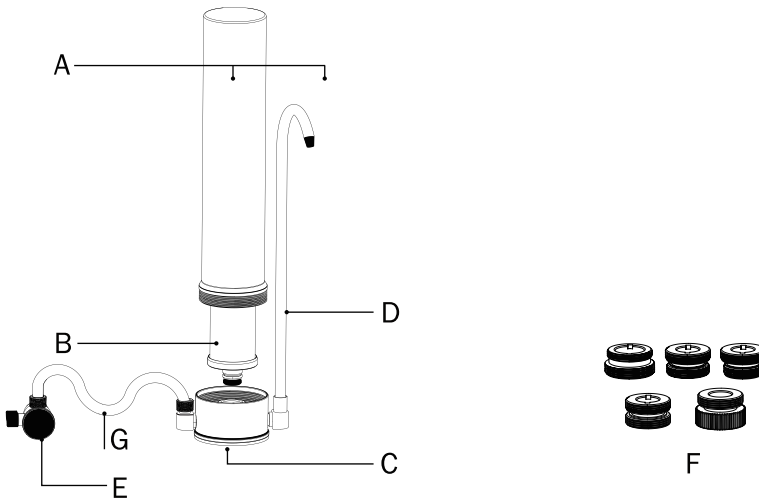
Note:

Do not use with water that is microbiologically unsafe or of unknown quality without adequate disinfection before or after using of the system.

› Precautions

- For cold water use only.
- Do not freeze the filter, as this case cause cracking and water leakage.
- Do not allow children under 3 years of age to have access to small parts during the installation of this product.
- Testing was performed under standard laboratory conditions, actual performance may vary.
- This installation must comply with all applicable state and local regulations.
- Please flush water for 5-10 minutes for the first time usage.

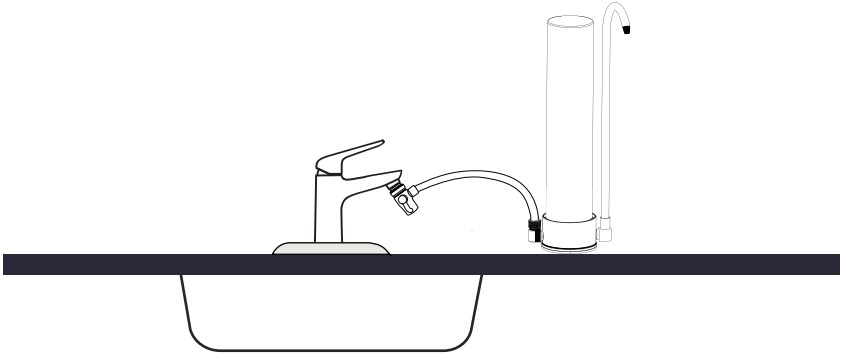
› Product Introduction



- A. Filter Housings
- B. DSF02 Carbon Block Filter (0.5 μ m)
- C. Stainless Steel Base
- D. Spout
- E. Mounting Base (B3)
- F. Adapters: A3, A4, A5, B4, A6
- G. Inlet Hose

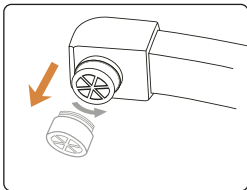
2. Installation Guide

> Sample Connection



> Installation Steps

Step 1: Remove the faucet's aerator and choose the right adapter to match your faucet threading. Make sure the washer between the faucet and the system is installed firmly.

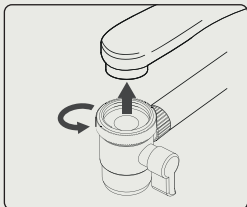


How to choose the right adapter?

Please remove the aerator first before proceeding.

I For external threaded faucets

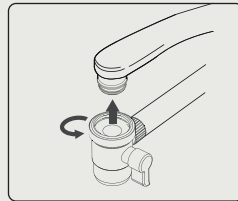
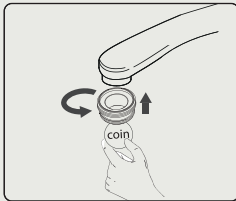
Please connect the adapter directly to the mounting base (E).



I For internal threaded faucets

Please select the appropriate adapter (F) according to the thread size.

Use a coin to connect the adapter to the faucet, then connect the mounting base (E) to the adapter. If the seal ring of the adapter is loose, please install it firmly.



If you still cannot connect it properly, please contact Frizzlife customer service team for assistance.

Step 2: Put the system in its proper position. Switch the lever to the level position and run water to the system slightly. Flush it for 5-10 minutes during the first use.

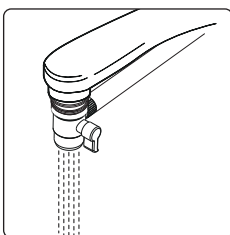
Note:

If there is water leakage at the connecting position between the sink faucet and the mounting base (E), it is recommended to use the plumber tape provided to avoid leakage.

3. Use Method

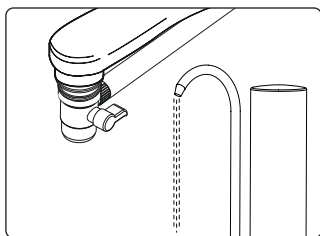
I Tap Water

Switch the lever to the downward direction to get tap water.



I Filtered Water

Switch the lever to the level direction to get filtered water



Note:

1. Before the first use, run water for 5-10 minutes in the “Filtered Water” position. Do not run water at a temperature higher than 100°F/38°C. There may be a small amount of black water and the sound of water pushing air out of the filter during the first use. This is a normal phenomenon because of the active carbon. Feel free to use the water after it becomes clear.

2. Check for water leakage. In the event of leakage, refer to the FAQ or contact Frizzlife customer service(support@frizzlife.com).

4. Filter Replacement Guide

› Replacement Filters

The Frizzlife Stainless Steel Countertop Water Filter System requires care and cleaning after a period of time. It is recommended to change the cartridge according to corresponding time intervals in the table below.

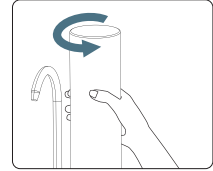
System Model No.	Replacement Filter No.	Filtration Capacity
SS99	DSF02	8-12 months

Note:

All the service life of the filter cartridge listed are based on actual laboratory test and the provided water. The actual service life of filter cartridge depends on source water quality and daily water usage.

› Replacement Instruction

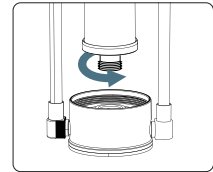
Step 1: Place the system in the sink, and twist off the filter housing that needs to be replaced.



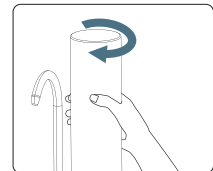
Note:

Please make sure to place the system in the water sink first before the replacement work. Otherwise, the water inside the system will spill out.

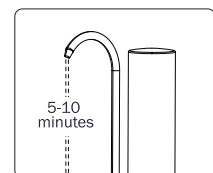
Step 2: Remove the expired filter from the system and twist the new filter cartridge into the base. Make sure the sealing ring is installed firmly.



Step 3: Install back the filter housing.



Step 4: Switch the lever to the level position and flush it for 5-10 minutes.



5. Frequently Asked Questions

Q: Why TDS does not drop after filtration?

A: TDS is not a professional way to test the water quality. TDS means total dissolved solids, for example if you put a very little salt (NaCl) into the water and test the TDS, and you will find the result is dramatically high. Same thing, if your water is full of minerals, the TDS is very high too. The SS99 system doesn't remove any of the minerals from water, but only stops harmful contaminants like heavy metals (Lead, Mercury, Cadmium) and over 90% of VOCs and Cysts, and it removes greatly the chlorine (99%) from water. Therefore, it is the reason why TDS you get is not that low as you expect.

Q: Why does water leak between the mounting base and the faucet?

A: Remove the filtration system from the faucet and check on whether the O-ring at the connection is placed correctly. Ensure that the thread between the faucet and the filtration system is screwed in firmly so that the O-ring can work.

Q: Why is the water leaking or dripping?

A: Check on whether the selected adapter is correct, or whether the adapter sealing ring and the base sealing ring are installed firmly. Check on whether the spout (D) and the stainless-steel base (E) are installed in place. Flush the filter for 5-10 minutes to activate it, and then there will not be water leaking or dripping.

6.Limited Product Warranty

SS99 Stainless Steel Countertop Water Filter System
Warrantor: FRIZZLIFE INC

ONE YEAR LIMITED FRIZZLIFE WARRANTY

The Frizzlife SS99 Series Countertop Water Filtration System are warranted to the original purchaser. To be free of defects in material and workmanship by FRIZZLIFE INC, FRIZZLIFE will replace or repair components of the unit that Frizzlife has deemed to be broken within the limits of the warranty without charge. The customer is not responsible for any freight involved with shipping the item back for inspection and shipment of replacement for items. Frizzlife is not liable for cost of removal, installation, transportation or any other charges in connection with a warranty claim.

Customer must register their systems with Frizzlife within **90** days of purchase in order to obtain a warranty. Warranty will discontinue after the unit is removed from the location where it was originally installed. Warranty begins on the date of delivery of product to the customer.

Owner's Warranty Responsibility:

As a condition of this Limited Warranty, the owner must ensure that periodic maintenance of the system is performed as described in the literature enclosed with the system. Should your unit develop a defect or otherwise fail to perform in accordance with this warranty, you should contact the retailer from whom the product was originally purchased. Warranty begins on the date of delivery of product to the customer.

1. Frizzlife is not liable for anything that we deem as abuse of the units, including but not limited to, misuse of product outside of intended use, equipment modifications, unauthorized repairs, improper installation, damage from freezing, hot water, fire or other acts of God outside of Frizzlife control. nally installed. Warranty begins on the date of delivery of product to the customer.

This warranty will be void if defects occur due to failure to observe the following conditions:

- I Incoming water to the the system cannot exceed 100 °F.
 - I Do not use outdoors or in a location that is subjected to direct sunlight or freezing. This warranty will not be effective unless and until the Frizzlife is shown to have been used in accordance with the installation and maintenance instructions accompanying the product.
2. Filter Cartridges are considered as disposable items, thus are not covered by warranty.
3. Customer is responsible for proper operation, which includes complete and continual leak inspection.
- I There are no other warranties which extend beyond what is described above.

7. WARRANTY REGISTRATION

150% EXTENDED WARRANTY

1. Email us your order ID and full name at support@frizzlife.com within 90 days.
2. Scan the QR code below to register



If you have any questions, any suggestions, or you need any assistance, please free to contact us anytime at support@frizzlife.com.

Your satisfaction is always our top priority!