

# G-SERIES

*Frizzlife*<sup>®</sup>

## OWNER'S MANUAL

Gravity-Fed Water Filter System

### Applicable Model No.

- G190 - Standard
- G210 - Standard
- G210 - Scale
- G210 - Pro
- G210 - Prox



# CONTENT

<b>1. G-Series Overview</b>	01
<b>2. Before Installation</b>	02
Inspect The Package	02
Specifications	02
Precautions	03
Product Introduction	04
<b>3. Installation Guide</b>	05
Installation Steps	05
<b>4. Filter Replacement Guide</b>	09
Replacement Filters	09
Replacement Instruction	09
<b>5. Use Tips</b>	12
<b>6. Maintenance</b>	12
<b>7. Frequently Asked Questions</b>	13
<b>8. Limited Product Warranty</b>	14
<b>9. Warranty Registration</b>	16

# Register to activate your warranty with Frizzlife.

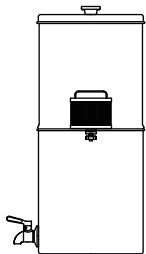
- › Scan the QR code to register
- › Email us your order ID and full name at [support@frizzlife.com](mailto:support@frizzlife.com)



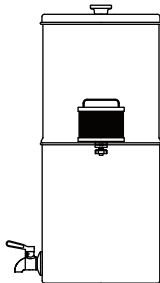
## Find the Installation Video

- › Search “Frizzlife Gravity-Fed Water Filter System Installation” on [www.youtube.com](http://www.youtube.com)

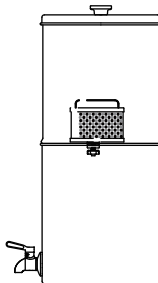
## 1. G-Series Overview



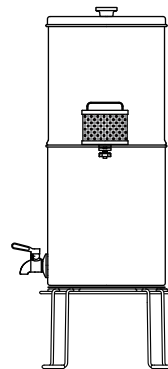
**Model:**  
**G190-STANDARD**



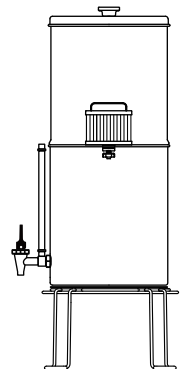
**Model:**  
**G210-STANDARD**



**Model:**  
**G210-SCALE**



**Model:**  
**G210-PRO**



**Model:**  
**G210-PROX**

## 2. Before Installation

### › Inspect the Package

Please take out the system and all the components from the box. Inspect them carefully according to “Product Introduction”, and make sure nothing is missing or damaged during shipping. If any parts are cracked or broken, please do not proceed with installation, and contact Frizzlife for an exchange or diagnosis.

✉ **E-mail: [support@frizzlife.com](mailto:support@frizzlife.com)**

### › Specifications

Model No.	G190 - STANDARD	G210 - STANDARD	G210 - SCALE	G210 - PRO	G210 - PROX
Replacement Filter	CB85	CB85	SC85	HM85	AT85
Filter Life	Up to 6,000 Gallons				
System Capacity	1.75 Gallons	2.25 Gallons			
Dimension (L*W*H)	7.48 * 7.48 * 17 inches	8.26*8.26*19 inches			
Finish	Brushed Nickel	Polished Nickel			
Operational Temperature	39°F-100°F / 4 °C-38 °C				
Applicable Water Source	Municipal Water				

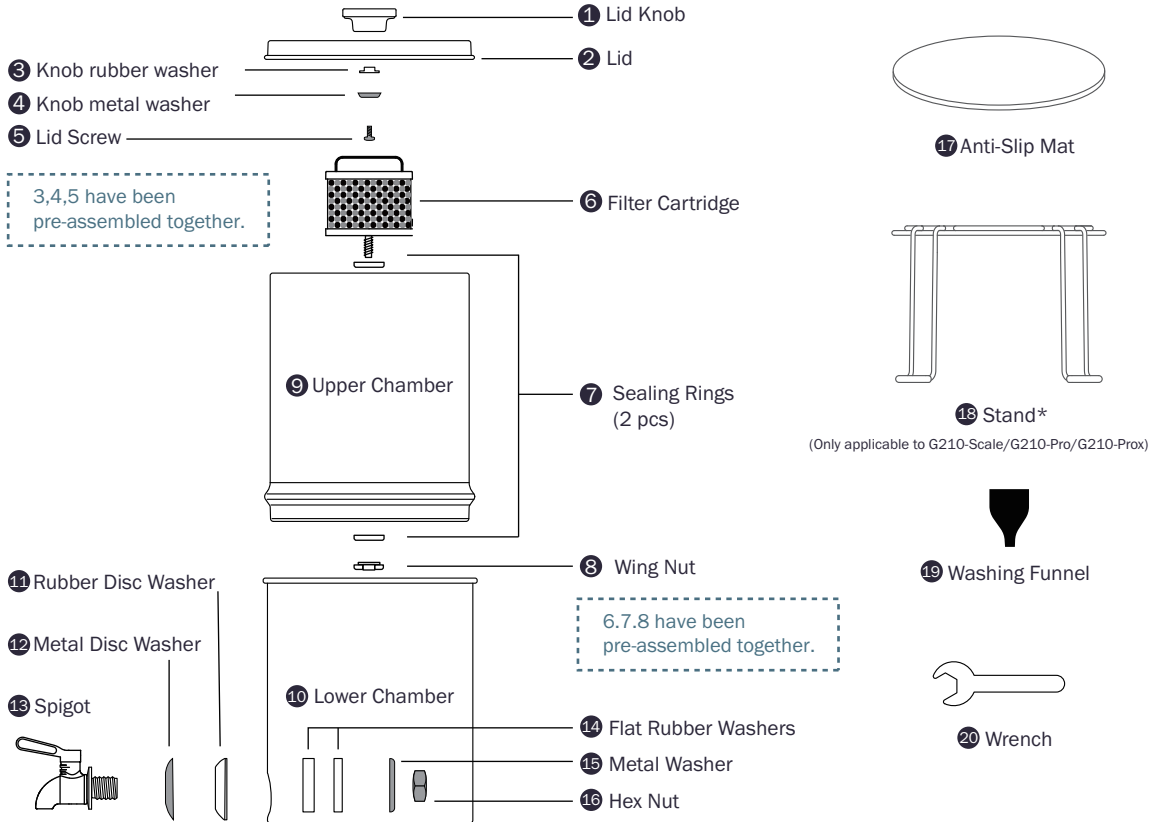
**NOTE:** Do not use with water that is microbiologically unsafe or of unknown quality without adequate disinfection before or after using of the system.



## › Precautions

1. For cold water use only.
2. Do not allow children under 3 years of age to have access to small parts during the installation of this product.
3. Testing was performed under standard laboratory conditions, actual performance may vary.
4. This installation must comply with all applicable state and local regulations.
5. Please flush water for 3-5 minutes for the first time usage.

## > Product Introduction



Item	G190 - STANDARD	G210 - STANDARD	G210 - SCALE	G210 - PRO	G210 - PROX
Stainless Steel Spigot	✓	✓	✓	✓	
Brass Water Level Spigot					✓
Stand			✓	✓	✓

# 3. Installation Guide

## > Installation Steps

### Step 1: Lid Knob Assembly

Insert the screw into the lid.

Fasten the knob onto the lid with the screw.



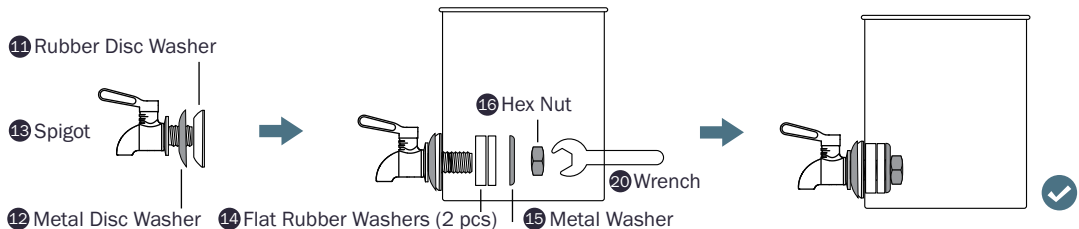
### Step 2: Spigot Assembly

**For G190-Standard/ G210-Standard/G210-Scale/G210-Pro :**

Push the metal disc washer and rubber disc washer to the end, close to the spigot, of its thread rod with force.

Insert the well assembled spigot into the lower chamber.

Install the two flat rubber washers, metal washer, and finally fasten the hex nut with the wrench.



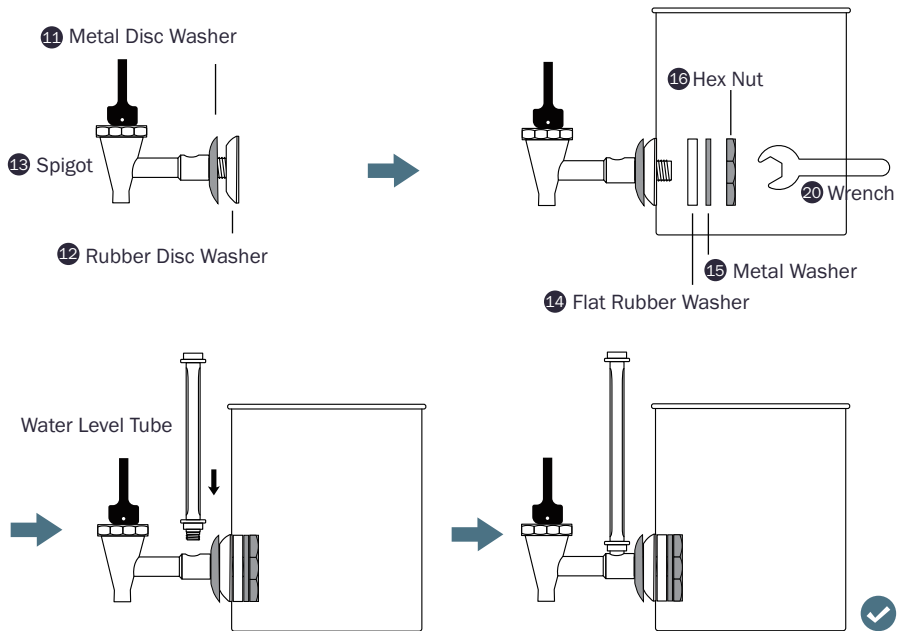
## For G210-Prox :

Push the metal disc washer and rubber disc washer to the end, close to the spigot, of its thread rod with force.

Insert the well assembled spigot into the lower chamber.

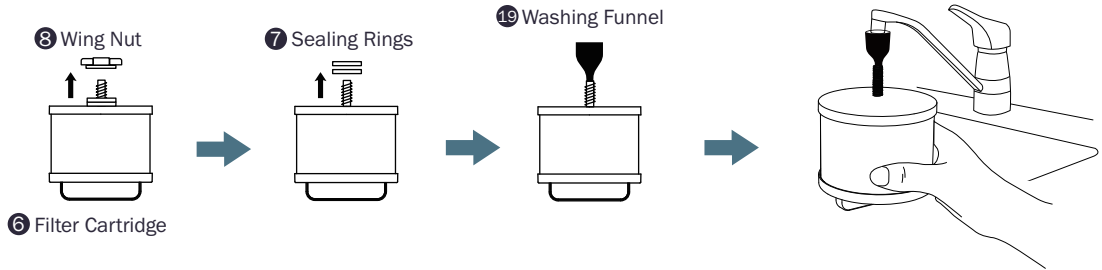
Install the one flat rubber washer, metal washer, and finally fasten the hex nut with the wrench.

Twist the water level tube onto the spigot.



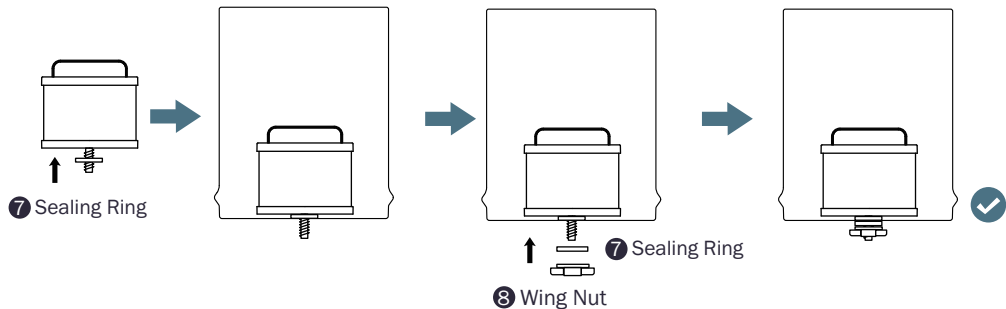
### Step 3: Flush the Filter Cartridge

Unscrew the wing nut from the filter cartridge.  
Take out the two sealing rings from the filter cartridge.  
Attach the washing funnel onto the filter cartridge.  
Flush the filter cartridge for 3-5 mins.



### Step 4: Install the Filter Cartridge

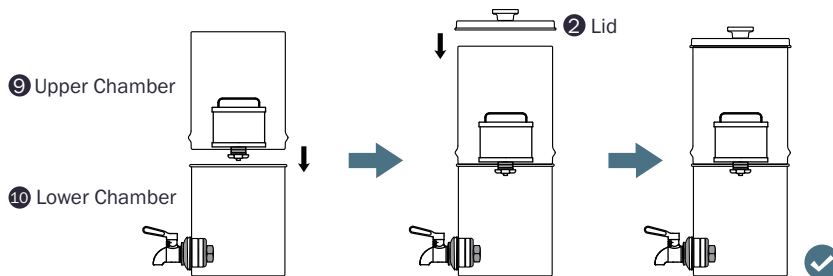
Push one sealing ring to the end of the thread rod.  
Insert the threaded rod of the cartridge into the hole in the upper chamber.  
Fasten the threaded rod of the cartridge with the other sealing ring and the wing nut.



## Step 5: Upper and Lower Chamber Assembly

Place the upper chamber into the lower chamber.

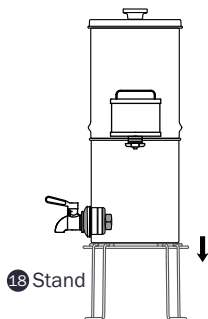
Put the lid on the upper chamber.



**NOTE:** The G Series Gravity-Fed Systems also come with non-slip mat, which is convenient for users to use on the table or on the stand, improving stability, safety and aesthetics.

### For G210-Scale /G210-Pro /G210-Prox:

Please put the lower chamber onto the stand provided.



## Step 6: Flush the Filter System

Fill the upper chamber with water, pour out the first bucket of water in the lower chamber. Repeat the step again. After 2-3 times of flushing, you can drink water from Frizzlife Gravity-Fed Water Filter System.

# 4. Filter Replacement Guide

## › Replacement Filters

The Frizzlife Stainless Steel Gravity-Fed Water Filter System requires care and cleaning after a period of time. It is recommended to change the cartridge according to corresponding time intervals in the table below.

Model No.	G190 - STANDARD	G210 - STANDARD	G210 - SCALE	G210 - PRO	G210 - PROX
Replacement Filter No.	CB85	CB85	SC85	HM85	AT85
Filter Life	Up to 6,000 Gallons				

**NOTE:** All the service life of the filter cartridge listed are based on actual laboratory test and the provided water. The actual service life of filter cartridge depends on source water quality and daily water usage.

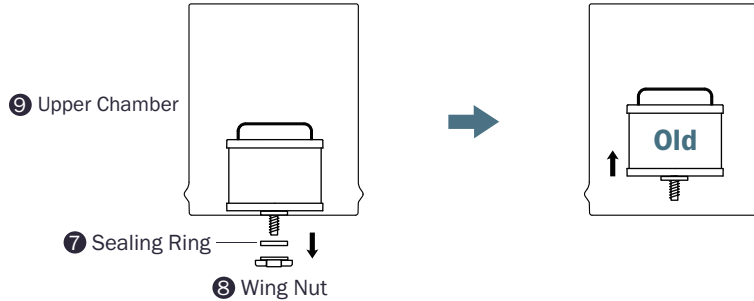
## › Replacement Instruction

### Step 1:

Empty the water inside the upper and lower chambers.

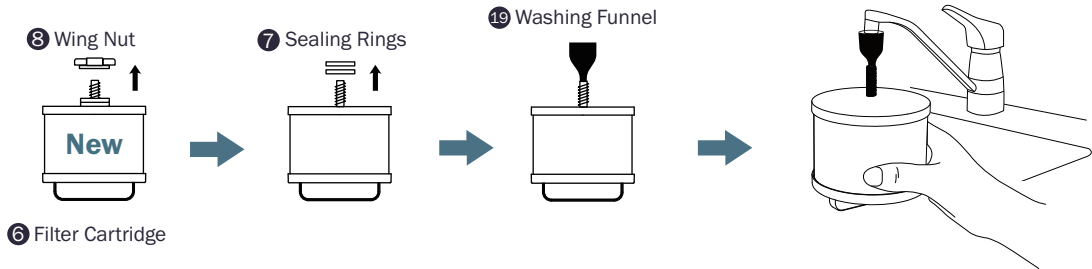
## Step 2: Remove the old cartridge

Unscrew the wing nut and sealing ring from the bottom of the upper chamber  
Take out the old cartridge.



## Step 3: Flush the new cartridge.

Unscrew the wing nut from the new cartridge.  
Take out the two sealing rings from the new cartridge  
Attach the washing funnel onto the new cartridge.  
Flush the new cartridge for 3-5 mins.





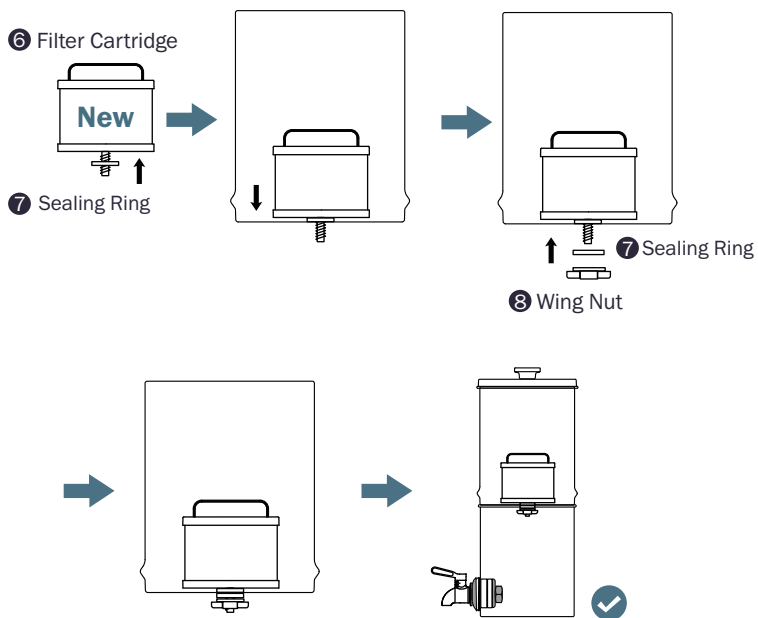
## Step 4: Install the new cartridge

Push one sealing ring to the end of the thread rod.

Insert the threaded rod of the cartridge into the hole in the upper chamber.

Fasten the threaded rod of the cartridge with the other sealing ring and the wing nut.

Place the upper chamber into the lower chamber.



## 5. Use Tips

1. Please ensure the spigot is in the closed position during the flushing and filtration process.
2. Do not fill the upper chamber if the lower chamber is completely full, as this will cause the lower chamber to overflow.
3. If you plan to leave the system unused for more than 3 days, please empty both upper and lower chambers, remove all filtration elements, and allow the components to dry.
4. Do not use with water that is microbiologically unsafe or of unknown quality without adequate disinfection before or after using of the system.

### **For G210 - Prox :**

1. The red ball in the water level tube indicates the water level in the lower chamber. Please add water into the upper chamber according to the height of the floating ball.
2. Do not add water if the red ball is at the highest level.

## 6. Maintenance

### **The Gravity-Fed System should be cleaned once a month:**

1. Remove the filter cartridge, spigots and other attached components first.
2. Then clean the chambers with water and dish soap.
3. Please do not use the steel wool, and abrasive cleaner, or a corrosive liquid such as gasoline or acetone.

## How to store the filter:

1. Please empty the remaining water inside the chamber.
2. Please seal the filter cartridge and store it in the refrigerator, but do not put it in the freezer.
3. Before the next use, please re-flush the filter cartridge and the system.

## 7. Frequently Asked Questions

### Q: Why TDS does not drop after filtration?

A: TDS is not a professional way to test the water quality. TDS means total dissolved solids, for example if you put a very little salt(NaCl) into the water and test the TDS, and you will find the result is dramatically high. Same thing, if your water is full of minerals, the TDS is very high too. The Frizzlife Gravity-Fed System doesn't remove any of the minerals from water, but only stops harmful contaminants like heavy metals (Lead, Mercury, Cadmium) and over 90% of VOCs and Cysts, and it removes greatly the chlorine (99%) from water. Therefore, it is the reason why TDS you get is not that low as you expect.

### Q: Why does water leak between the upper chamber and the lower chamber?

A: After the lower chamber is filled up with filtered water, the water inside may spill out. Please pay attention to the water level

**Q: My filtered water has an unexpected taste, what can I do?**

A: Please make sure the new cartridge has been fully flushed for 3-5 mins before starting to use.

**Q: Why does the upper chamber still contain water after filtration?**

A: It is normal. Since the system is gravity fed, as the water level in the upper chamber goes down, the pressure that forces the water goes down decreases as well. Therefore, the filtration speed will naturally slow down.

## **8. Limited Product Warranty**

Frizzlife Gravity-Fed Water Filter System | Warrantor: FRIZZLIFE INC

### **ONE YEAR LIMITED FRIZZLIFE WARRANTY**

The Frizzlife Gravity-Fed Water Filter System are warranted to the original purchaser. To be free of defects in material and workmanship by FRIZZLIFE INC, FRIZZLIFE will replace or repair components of the unit that Frizzlife has deemed to be broken within the limits of the warranty without charge. The customer is not responsible for any freight involved with shipping the item back for inspection and shipment of replacement for items. Frizzlife is not liable for cost of removal, installation, transportation or any other charges in connection with a warranty claim.

Customer must register their systems with Frizzlife within **90** days of purchase in order to obtain a warranty. Warranty will discontinue after the unit is removed from the location where it was originally installed. Warranty begins on the date of delivery of product to the customer.

### **Owner's Warranty Responsibility:**

As a condition of this Limited Warranty, the owner must ensure that periodic maintenance of the system is performed as described in the literature enclosed with the system. Should your unit develop a defect or otherwise fail to perform in accordance with this warranty, you should contact the retailer from whom the product was originally purchased. Warranty begins on the date of delivery of product to the customer.

1. Frizzlife is not liable for anything that we deem as abuse of the units, including but not limited to, misuse of product outside of intended use, equipment modifications, unauthorized repairs,

improper installation, damage from freezing, hot water, fire or other acts of God outside of Frizzlife control. Warranty begins on the date of delivery of product to the customer.

This warranty will be void if defects occur due to failure to observe the following conditions:

- I Incoming water to the the system cannot exceed 100° F.
- I Do not use outdoors or in a location that is subjected to direct sunlight or freezing. This warranty will not be effective unless and until the Frizzlife is shown to have been used in accordance with the installation and maintenance instructions accompanying the product.
- 2. Filter Cartridges are considered as disposable items, thus are not covered by warranty.
- 3. Customer is responsible for proper operation, which includes complete and continual leak inspection.
- I There are no other warranties which extend beyond what is described above.

## 9. Warranty Registration

### 150% EXTENDED WARRANTY

- 1. Email us you order ID and full name at [support@frizzlife.com](mailto:support@frizzlife.com) within 90 days.
- 2. Scan the QR code below to register



If you have any questions, any suggestions, or you need any assistance, please free to contact us anytime at [support@frizzlife.com](mailto:support@frizzlife.com).

**Your satisfaction is always our top priority!**